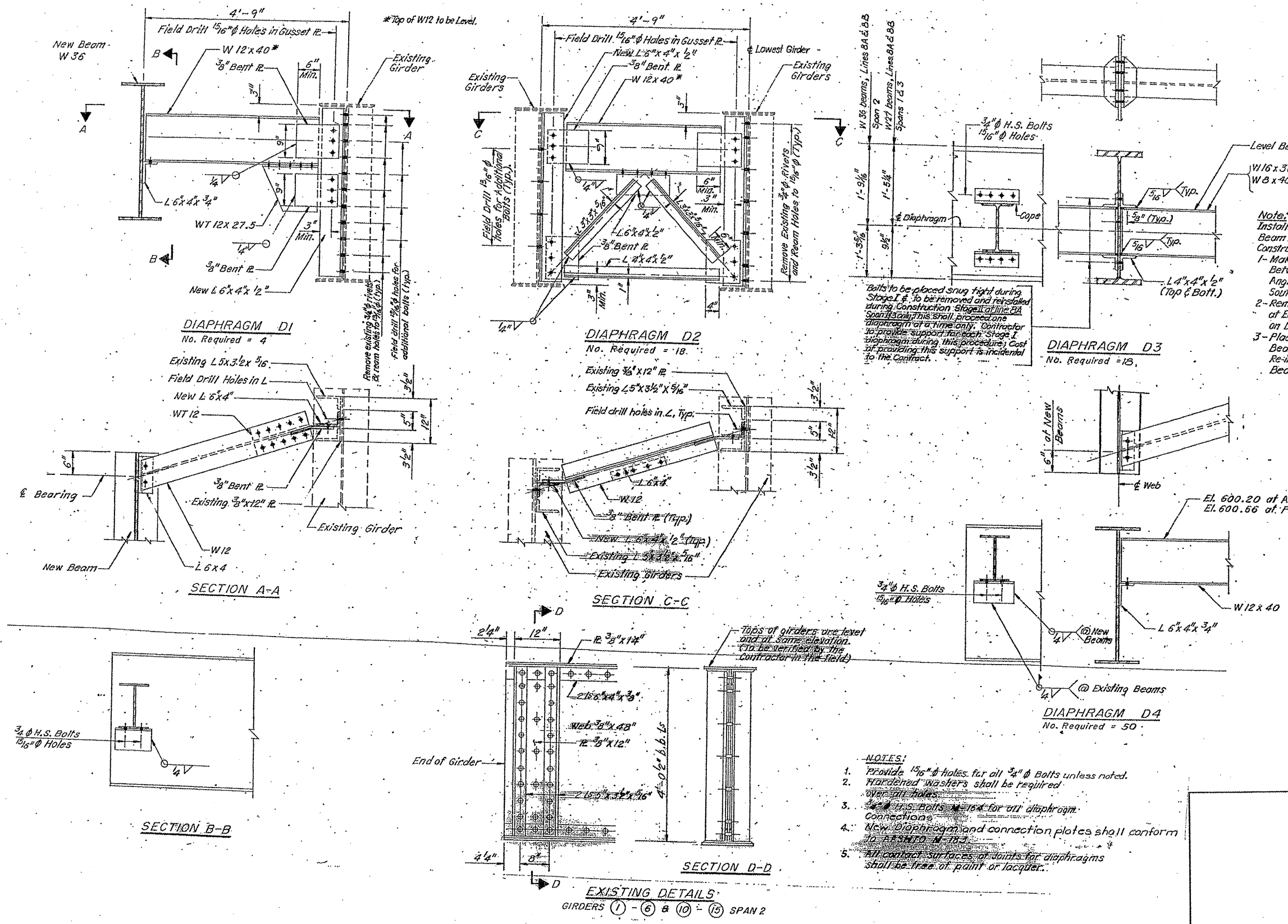


|                  |                        |                   |                       |                       |
|------------------|------------------------|-------------------|-----------------------|-----------------------|
| ROUTE<br>VARIOUS | SECTION<br>2010-023 BP | COUNTY<br>VARIOUS | TOTAL<br>SHEETS<br>93 | SHEET<br>NUMBER<br>72 |
|------------------|------------------------|-------------------|-----------------------|-----------------------|

CONTRACT NO. 60K48



**Note:**  
Installation of D3 Diaphragms Between Beam Lines 7 & 8A in Stage II Construction to Proceed as Follows:  
1- Make Special Welds as Detailed, Between L4x4 Connection Angles At D3 Diaphragms on South Side of Beam on Line 8A.  
2- Remove All Eight Connection Bolts of Each D3 Diaphragm - at Beam on Line 8A.  
3- Place D3 Diaphragms Between Beams on Line 7 & 8A, and Re-install 8 Connection Bolts of Beam on Line 8A.

**Notes:**  
Bolts to be placed snug tight during Stage I & to be removed and reinstalled during Construction Stage II of Line 8A. Span 2 only this shall proceed one diaphragm at a time only. Contractor to provide support for each Stage I diaphragm during this procedure. Cost of providing this support is incidental to the Contract.

**Notes:**  
1- Provide 1 1/16" holes for all 3/4" bolts unless noted.  
2- Hardened washers shall be required over all holes.  
3- 3/4" H.S. Bolts - 104 for all diaphragm connections.  
4- New diaphragm and connection plates shall conform to AASHTO M 17.7.  
5- All contact surfaces of joints for diaphragms shall be free of paint or lacquer.

ILLINOIS DEPARTMENT OF  
TRANSPORTATION

EXISTING BRIDGE PLAN

LOCATION 13: SN 016-0367  
PETERSON AVE. OVER NORTH SHORE CHANNEL

SH. 11 of 15