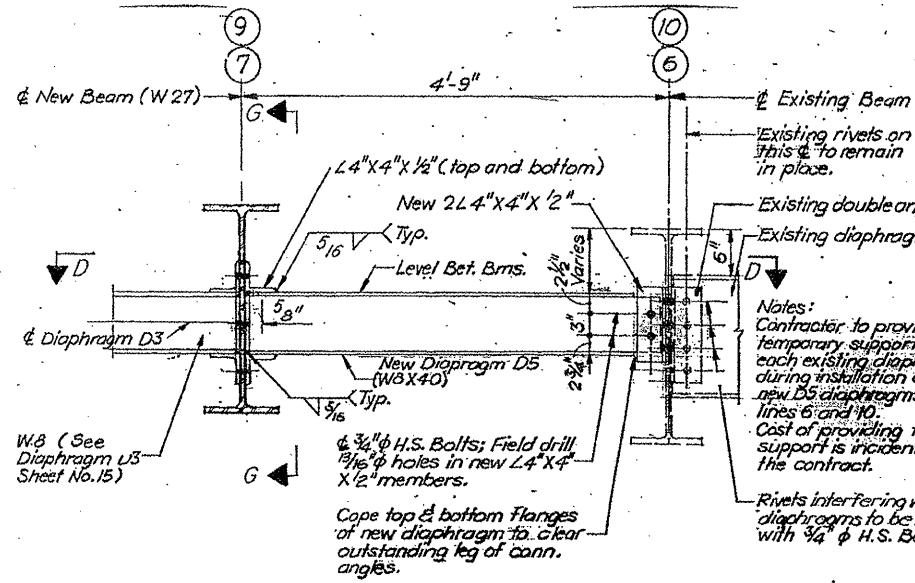
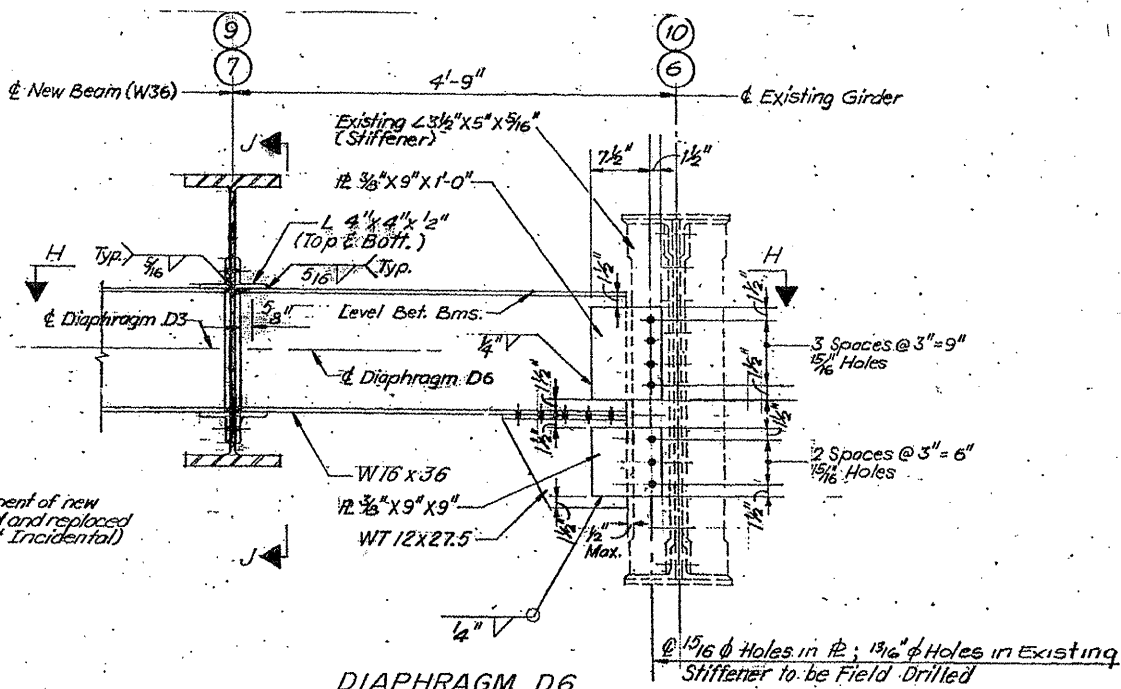


ROUTE VARIOUS	SECTION 2010-023 BP	COUNTY VARIOUS	TOTAL SHEETS 93	SHEET NUMBER 73
------------------	------------------------	-------------------	--------------------	--------------------

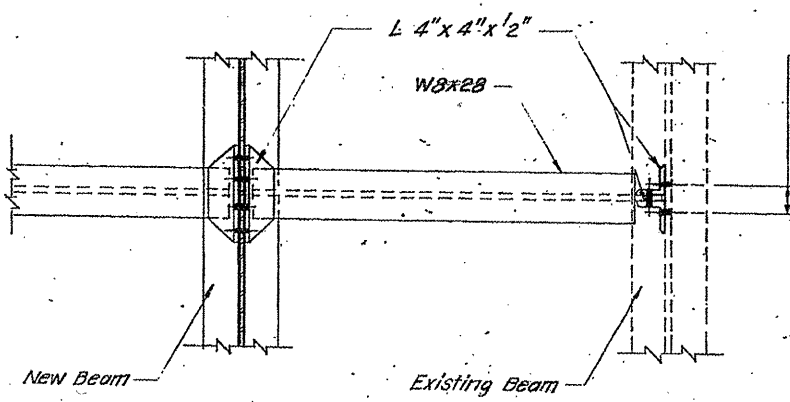
CONTRACT NO. 60K48



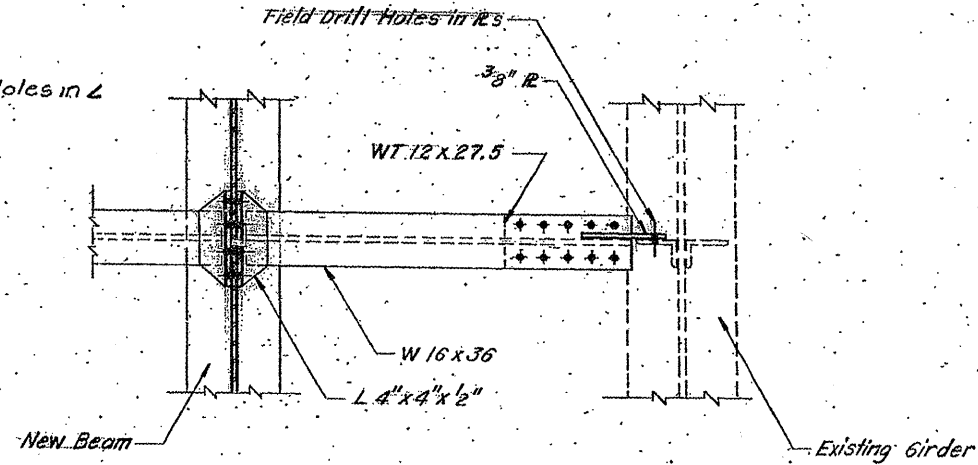
DIAPHRAGM D5
No. Required = 8



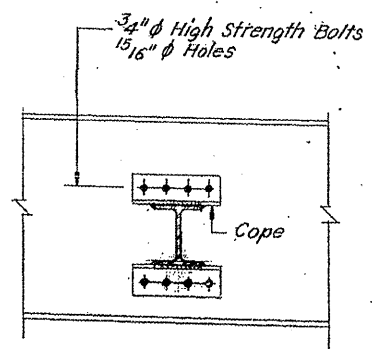
DIAPHRAGM D6
No. Required = 4



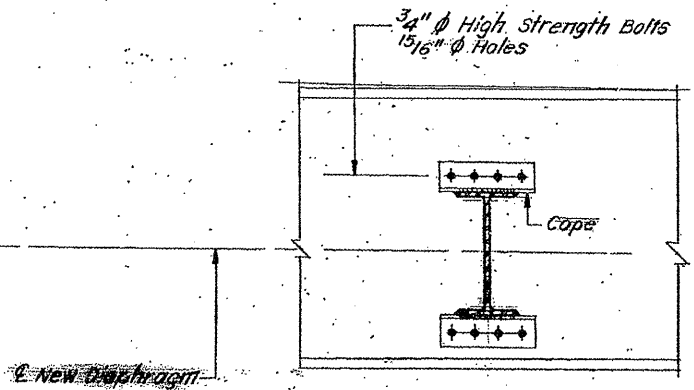
SECTION D-D



SECTION H-H



SECTION G-G



SECTION J-J

SH. 12 of 15

ILLINOIS DEPARTMENT OF
TRANSPORTATION

EXISTING BRIDGE PLAN

LOCATION 13: SN 016-0367
PETERSON AVE. OVER NORTH SHORE CHANNEL