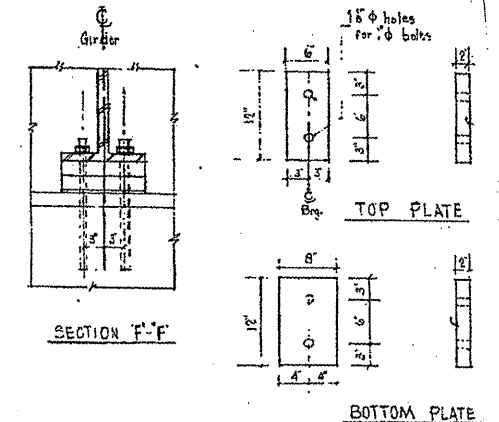
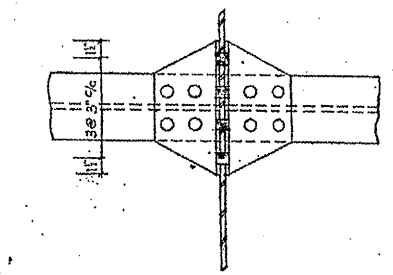
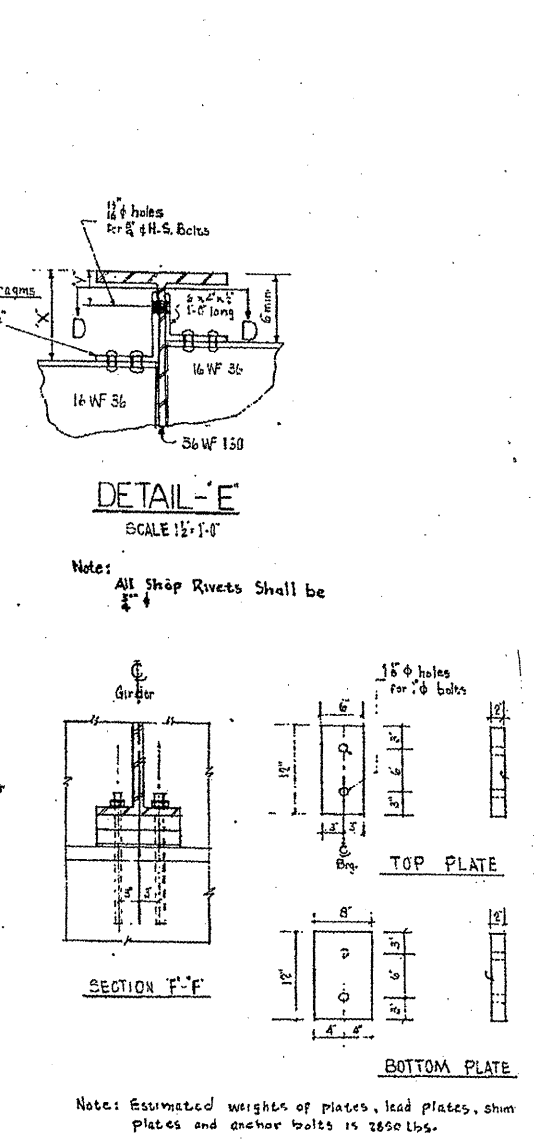
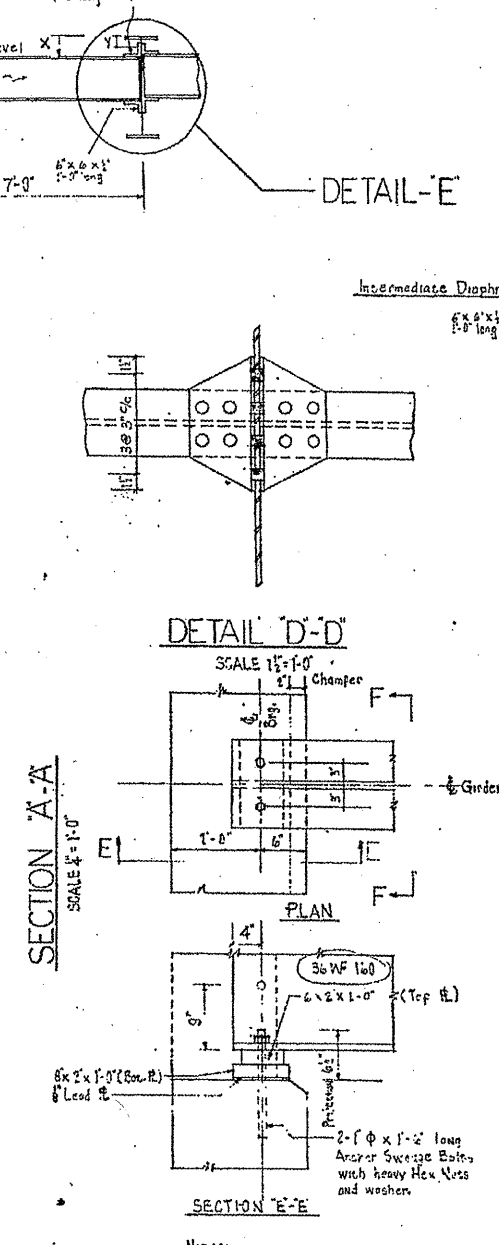
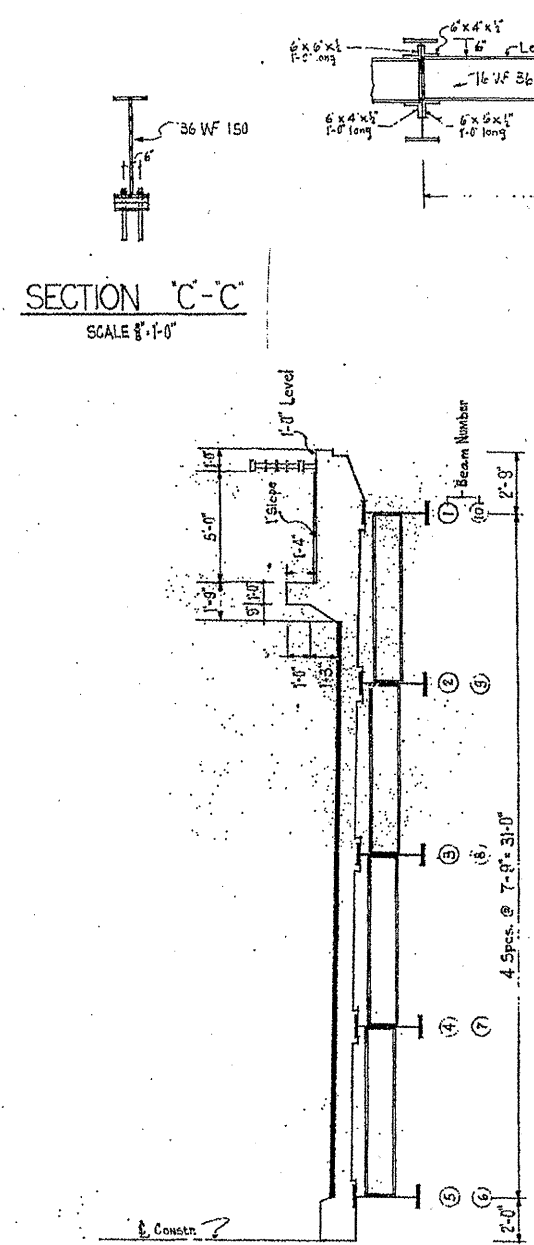
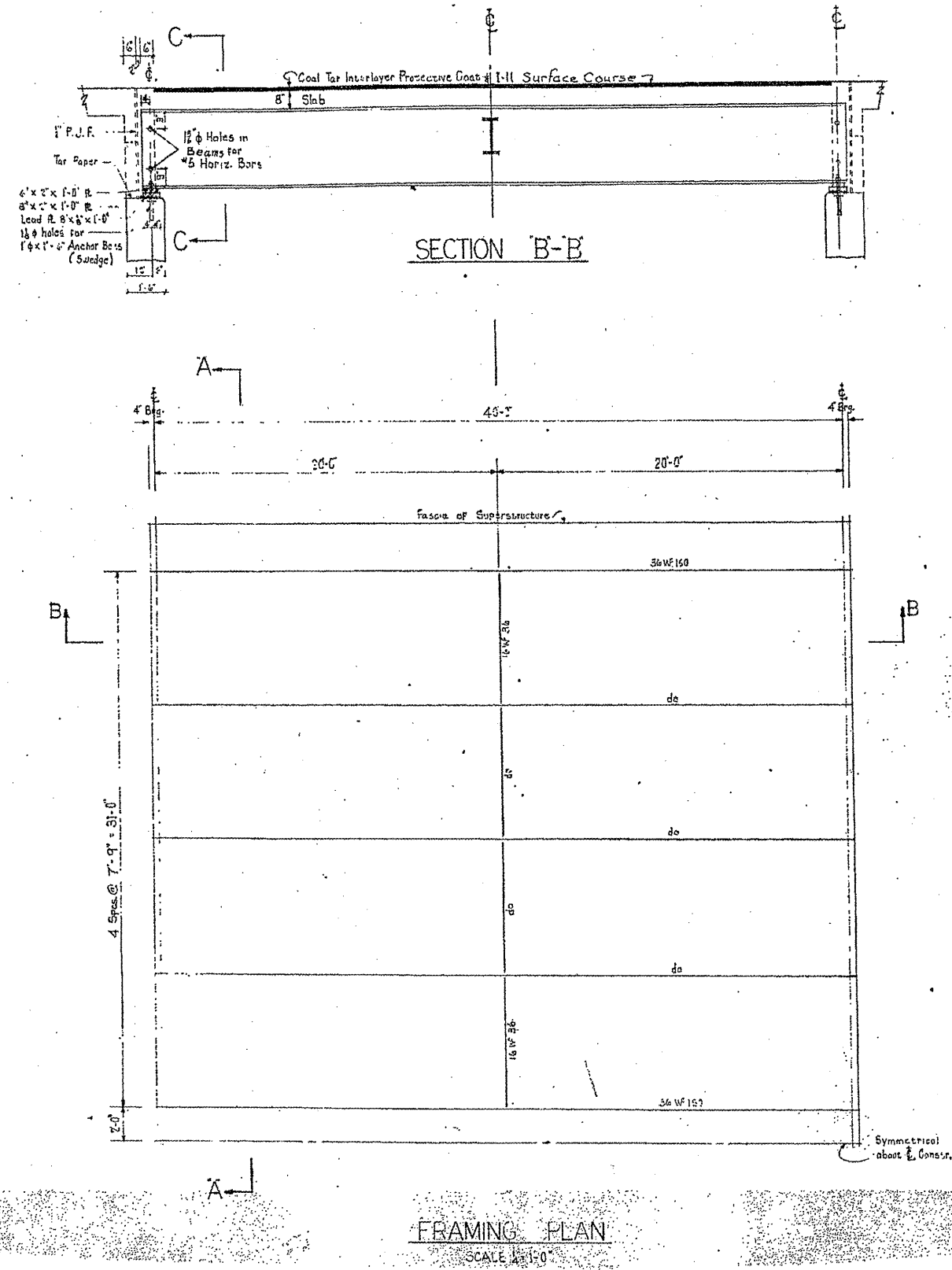


| | | | | |
|------------------|------------------------|-------------------|--------------------|--------------------|
| ROUTE VARIOUS | SECTION 2010-023 BP | COUNTY VARIOUS | TOTAL SHEETS 93 | SHEET NUMBER 86 |
|------------------|------------------------|-------------------|--------------------|--------------------|

CONTRACT NO. 60K48



Heavy Hex Nut
Steel Washer
Anchor Swedge Bolt

| SCHEDULE FOR SHIM PLATES | | | |
|--------------------------|----------|------|------|
| Location | Beam No. | Span | Shim |
| Abutment | 54 | 4 | 1-0 |
| | | | 2 |
| | | | 3 |
| | | | 4 |

Note: Diaphragms are stepped up across the roadway so that dimensions X and Y are identical for all beams except beams 4, 5, 6 and 7. For Structural Steel Notes see Sheet No.

Note: Estimated weights of plates, lead plates, shim plates and anchor bolts is 2850 lbs.

ILLINOIS DEPARTMENT OF
TRANSPORTATION
EXISTING BRIDGE PLAN
LOCATION 16: SN 016-0528
IL 68 (DUNDEE RD.) OVER W. FORK N. Br. CHICAGO
RIVER

SH. 2 of 2