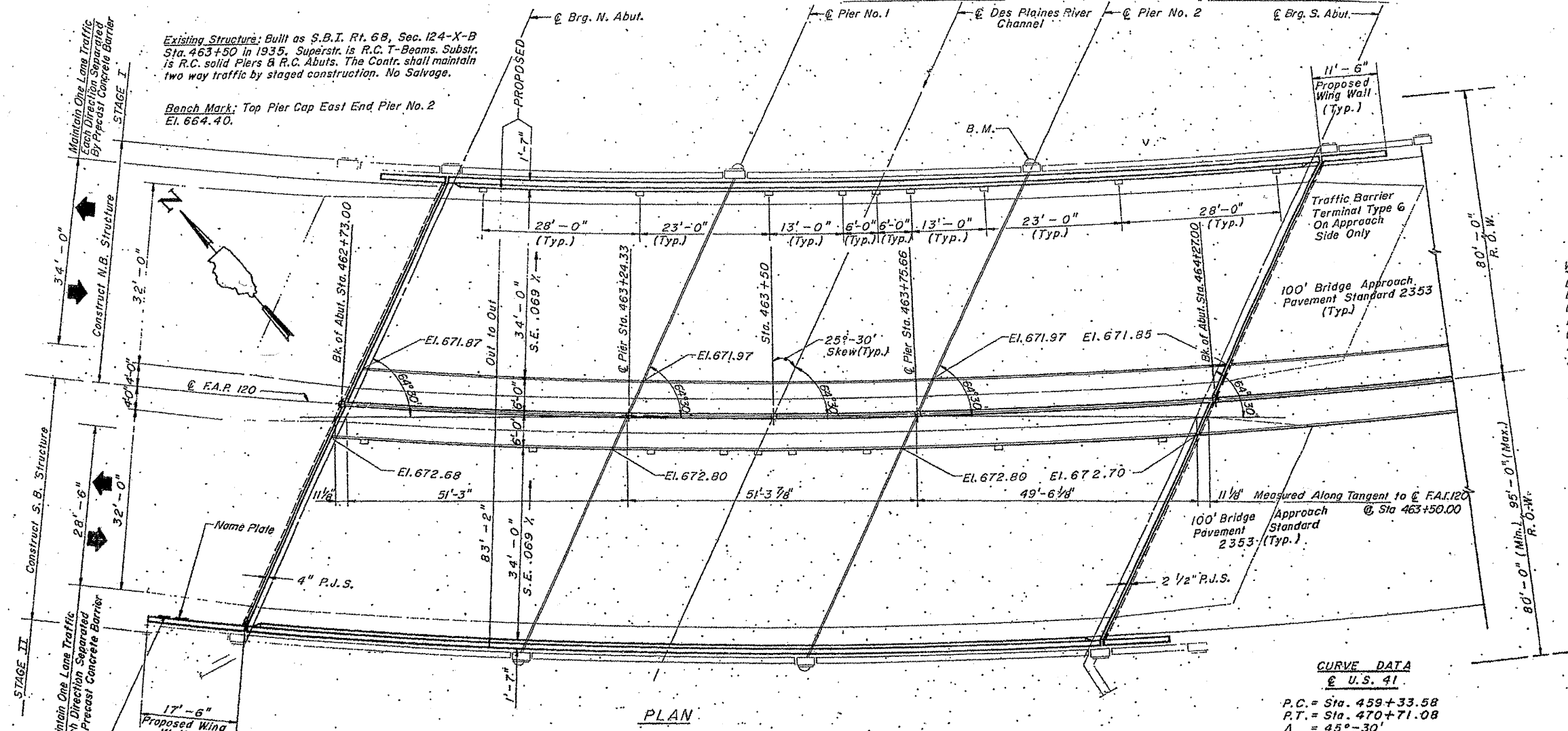


ROUTE	SECTION	COUNTY	TOTAL SHEETS	SHEET NUMBER
VARIOUS	2010-023 BP	VARIOUS	93	87

CONTRACT NO. 60K48

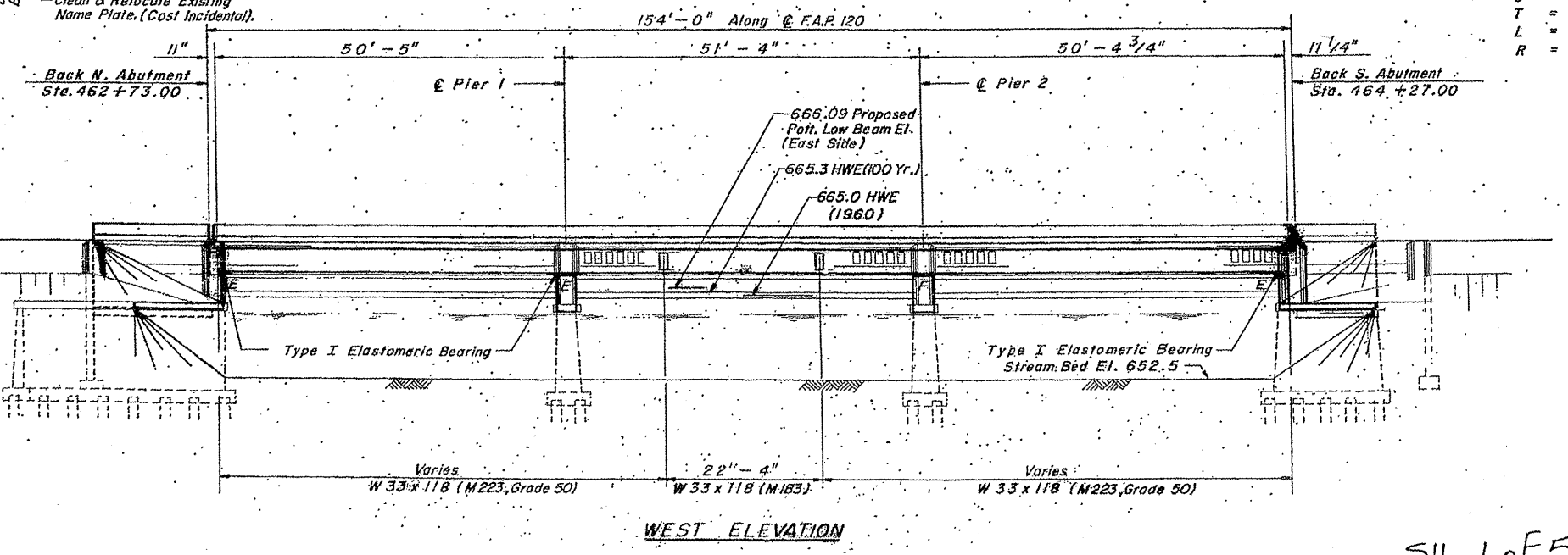


WATERWAY INFORMATION:

Drainage Area	225 SQ. Miles
Existing Opening (Below Low Beam El. 664.6)	1559 SQ. Ft.
Proposed Opening (Below 100 Yr. H.W.E.)	1650 SQ. Ft.
100-Year Discharge	4200 CFS
Flood of Record - Discharge	Unknown
Date	1960
Required Opening (100Yr. H.W.E.)	1650 SQ. Ft.
Created Head	Negligible

CURVE DATA
@ U.S. 41

P.C.	= Sta. 459+33.58
P.T.	= Sta. 470+71.08
A	= 45°-30'
D	= 4°-00'
T	= 600.65'
L	= 1137.50'
R	= 1432.39'



ILLINOIS DEPARTMENT OF TRANSPORTATION

EXISTING BRIDGE PLAN

LOCATION 17: SN 049-0029

US 41 (SKOKIE HWY.) OVER DES PLAINES RIVER

SH. 10F5