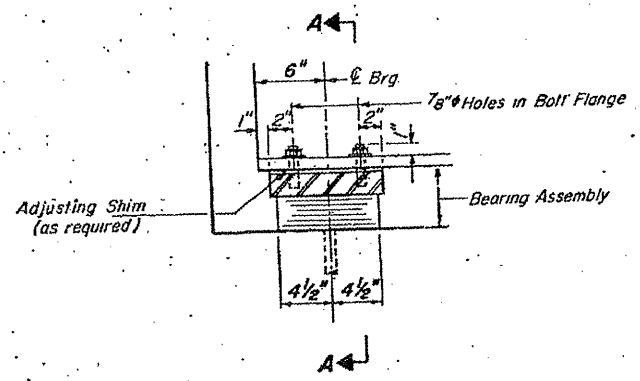
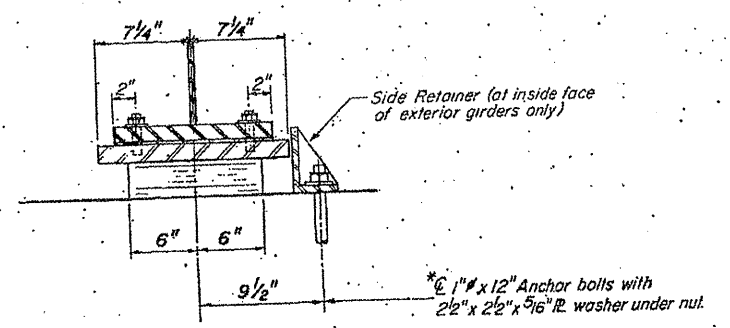


ROUTE VARIOUS	SECTION 2010-023 BP	COUNTY VARIOUS	TOTAL SHEETS 93	SHEET NUMBER 90
------------------	------------------------	-------------------	--------------------	--------------------

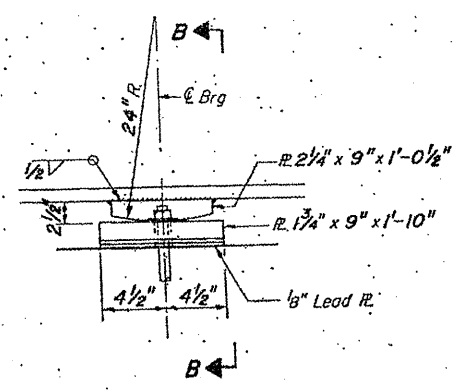
CONTRACT NO. 60K48



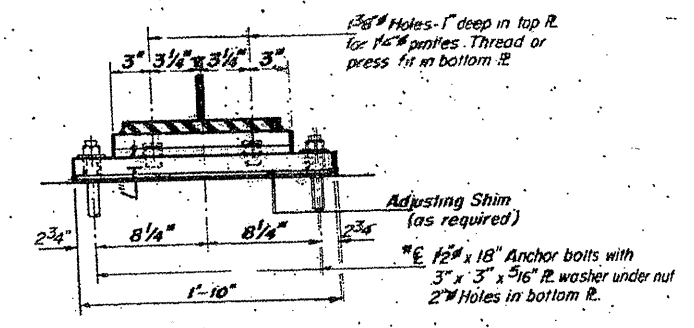
SECTION AT ABUT.



SECTION A-A



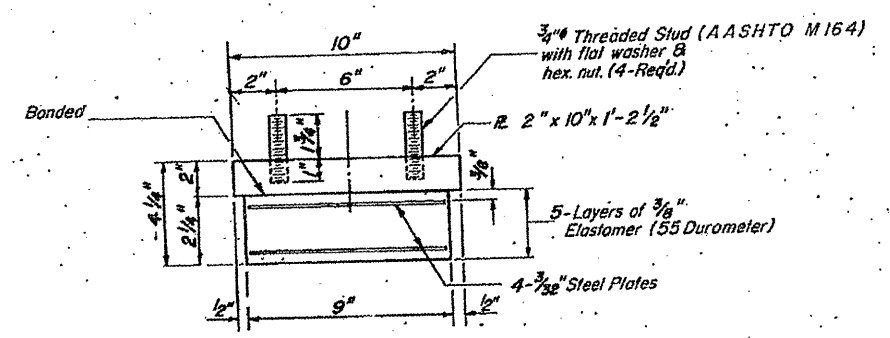
ELEVATION AT PIER



SECTION B-B.

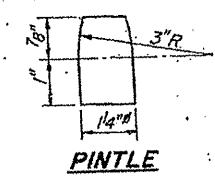
FIXED BEARING AT PIER NO. 2

**TYPE I ELASTOMERIC EXP. BRG. AT SOUTH ABUTMENT**



BEARING ASSEMBLY

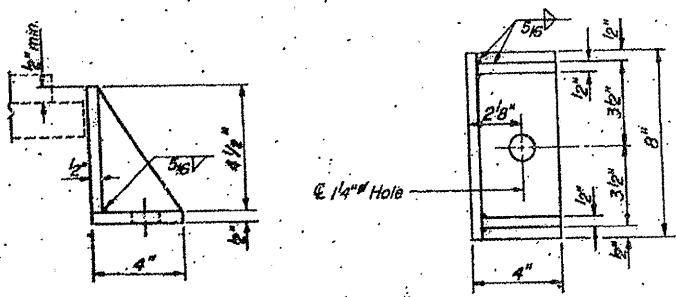
\*Note: After girders have been erected holes at expansion bearings shall be drilled and anchor bolts grouted in place. Anchor bolts at fixed bearings may be built into the masonry.



PINTLE

TABLE OF "L" DIMENSIONS

Beam	1	2	3	4	5	6	7	8	9	C
Radius	1393.81'	1402.81'	1411.81'	1420.81'	1429.81'	1434.97'	1443.97'	1452.97'	1461.97'	1470.97'
L7	154'-2 3/8"	153'-11 1/2"	153'-8 1/8"	153'-5 3/8"	153'-3 1/4"	153'-1 1/8"	152'-11 1/8"	152'-8 3/8"	152'-6 1/8"	152'-3 1/4"
L1	50'-8 3/8"	50'-7 3/8"	50'-6 3/8"	50'-6 1/8"	50'-5 3/8"	50'-4 7/8"	50'-4 1/4"	50'-3 3/8"	50'-2 7/8"	50'-2 1/4"
L2	51'-8"	51'-7 1/8"	51'-6 1/8"	51'-5 3/8"	51'-4 3/8"	51'-3 3/8"	51'-2 3/8"	51'-1 3/8"	51'-1 1/4"	51'-0 1/2"
L3	50'-9 3/8"	50'-8 3/8"	50'-7 3/8"	50'-6 3/8"	50'-5 3/8"	50'-4 7/8"	50'-3 3/8"	50'-2 3/8"	50'-1 3/8"	50'-0 1/2"
L4	64'-2 1/8"	64'-2 1/8"	64'-1 3/8"	61'-8 3/8"	63'-11 1/8"	63'-11 1/8"	63'-10 1/8"	63'-10 1/8"	60'-11 3/8"	63'-8 3/4"
L5	25'-8"	27'-1 1/8"	25'-6 1/8"	27'-9 3/8"	25'-4 3/8"	25'-3 3/4"	27'-2 3/8"	25'-2 1/8"	27'-11 1/4"	25'-0 1/8"
L6	64'-3 1/8"	62'-8 3/8"	64'-1 3/8"	64'-0 1/8"	63'-11 1/8"	63'-10 1/2"	61'-9 1/2"	63'-8 1/2"	63'-7 1/2"	63'-6 3/8"
L7	13'-0"	13'-0"	13'-0"	10'-8"	13'-0"	13'-0"	13'-0"	13'-0"	10'-2"	13'-0"
L8	13'-0"	11'-6"	13'-0"	13'-0"	13'-0"	13'-0"	11'-0"	13'-0"	13'-0"	13'-0"
L9	8'-6 3/8"	8'-5 3/8"	8'-4 7/8"	8'-4 1/8"	8'-3 3/8"	8'-2 3/8"	8'-2 1/4"	8'-1 3/8"	8'-0 1/8"	8'-0 1/4"
L10	15'-7 1/2"	15'-7 3/8"	15'-7"	15'-3 1/8"	15'-5 3/8"	15'-5 3/8"	15'-4 3/8"	15'-4 3/8"	15'-2 1/8"	15'-3 3/8"
L11	15'-7 1/2"	15'-6 1/8"	15'-6 1/8"	15'-9 1/8"	15'-5 1/8"	15'-5 3/8"	15'-5 1/8"	15'-4 1/8"	15'-6 1/8"	15'-3 3/8"
L12	8'-7 1/8"	8'-6 3/8"	8'-5 3/8"	8'-4 1/8"	8'-3 1/8"	8'-2 1/2"	8'-1 1/2"	8'-0 1/2"	7'-11 1/2"	7'-10 3/8"
L13	0'-6"	4'-4"	8'-2"	12'-0 1/8"	15'-10 1/8"	0'-6"	4'-2 1/2"	7'-11"	11'-7 1/2"	15'-4"
L14	16'-7 1/2"	16'-8 3/4"	16'-10 1/8"	16'-11 3/8"	17'-0 3/8"	16'-9 1/8"	16'-10 3/8"	16'-11 3/8"	17'-0 3/8"	17'-2 1/8"
L15	16'-7 1/2"	16'-8 3/4"	16'-10 1/8"	16'-11 3/8"	17'-0 3/8"	16'-9 1/8"	16'-10 3/8"	16'-11 3/8"	17'-0 3/8"	17'-2 1/8"
L16	16'-11 3/8"	12'-10 1/8"	8'-8 3/4"	4'-7 3/8"	0'-6"	16'-4 7/8"	12'-5"	8'-5 3/8"	4'-5 3/8"	0'-6"
L17	0'-6"	4'-8 1/8"	8'-11 1/8"	13'-2 1/8"	17'-4 1/8"	0'-6"	4'-7"	8'-7 1/8"	12'-8 1/8"	16'-9 3/8"
L18	16'-3 3/8"	16'-4 3/8"	16'-6 3/8"	16'-7 1/8"	16'-8 3/4"	16'-5 3/8"	16'-6 3/8"	16'-7 3/4"	16'-9 1/8"	16'-10 3/8"
L19	16'-3 1/8"	16'-4 3/8"	16'-6 3/8"	16'-7 1/8"	16'-8 3/4"	16'-5 3/8"	16'-6 3/8"	16'-7 3/4"	16'-9 1/8"	16'-10 3/8"
L20	18'-6 3/8"	14'-0 1/2"	9'-6 3/8"	5'-0 3/8"	0'-6"	17'-11 1/8"	13'-6 3/8"	9'-2 3/8"	4'-10 1/8"	0'-6"
L21	0'-6"	5'-1 3/8"	9'-9 1/8"	14'-4 3/8"	19'-0 3/8"	0'-6"	4'-11 1/8"	9'-5 3/8"	13'-10 3/8"	18'-4 1/8"
L22	15'-0 3/8"	15'-1 3/4"	15'-2 1/8"	15'-4 1/8"	15'-5 1/4"	15'-2 1/8"	15'-3 1/2"	15'-4 1/8"	15'-5 3/8"	15'-6 3/8"
L23	15'-0 3/8"	15'-1 3/4"	15'-2 1/8"	15'-4 1/8"	15'-5 1/4"	15'-2 1/8"	15'-3 1/2"	15'-4 1/8"	15'-5 3/8"	15'-6 3/8"
L24	20'-2 3/8"	15'-3 3/8"	10'-4 1/8"	5'-5 1/8"	0'-6"	19'-5 3/4"	14'-8 3/8"	9'-11 3/8"	5'-2 3/8"	0'-6"



SIDE RETAINER

ILLINOIS DEPARTMENT OF  
TRANSPORTATION  
  
EXISTING BRIDGE PLAN  
  
LOCATION 17: SN 049-0029  
US 41 (SKOKIE HWY.) OVER DES PLAINES RIVER

SH. 4 of 5