

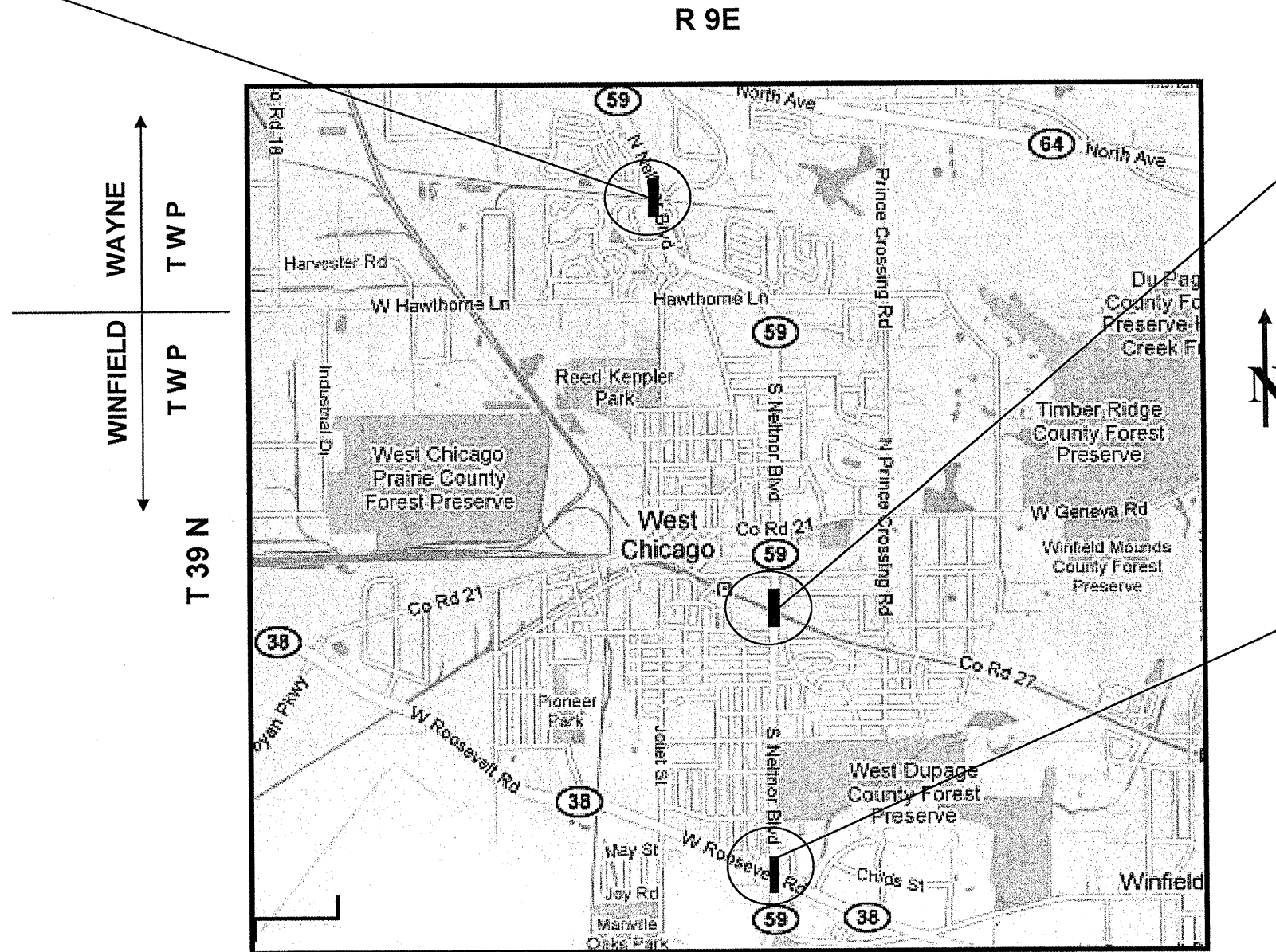
ROUTE	SECTION	COUNTY	TOTAL SHEETS	SHEET NUMBER
FAP 338 & 349	2010-022BP	DUPAGE & KENDALL	25	5

CONTRACT NO. 60K49

LOCATION 3: SN 022-0144
IL 59 (NELTNOR BLVD) OVER
ABANDONED RR
WAYNE TOWNSHIP

LOCATION 2: SN 022-0143
IL 59 (NELTNOR BLVD) OVER -
UP & CN RR'S
CITY OF WEST CHICAGO

LOCATION 1: SN 022-0036
IL 59 (NELTNOR BLVD) OVER
IL 38 (ROOSEVELT RD)
CITY OF WEST CHICAGO



WAYNE AND WINFIELD TOWNSHIPS
DUPAGE COUNTY

TRAFFIC DATA

LOCATION 1:
IL 59 (NELTNOR BLVD):

2009 ADT = 25900
POSTED SPEED LIMIT = 45 MPH

IL 38 (ROSEVELT RD):

2009 ADT = 19850
POSTED SPEED LIMIT = 45 MPH

LOCATION 2:

2009 ADT = 31700
POSTED SPEED LIMIT = 35 MPH

LOCATION 3:

2009 ADT = 27600
POSTED SPEED = 45 MPH

ILLINOIS DEPARTMENT OF
TRANSPORTATION
LOCATION MAP
LOCATION 1: SN 022-0036
LOCATION 2: SN 022-0143
LOCATION 3: SN 022-0144