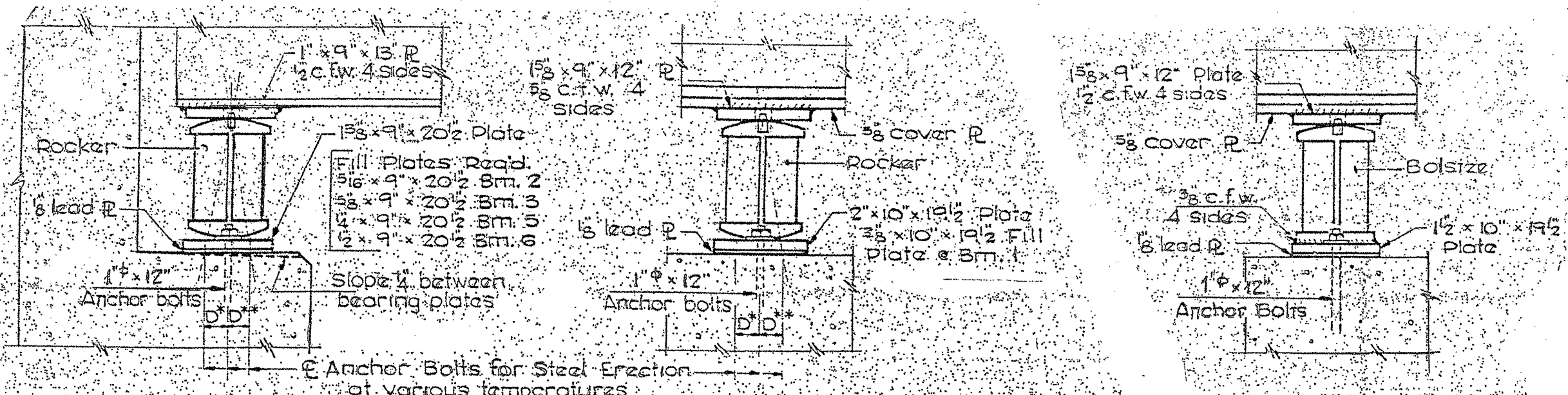


ROUTE	SECTION	COUNTY	TOTAL SHEETS	SHEET NUMBER
FAP 338 & 349	2010-022 BP	DUPAGE & KENDALL	25	15

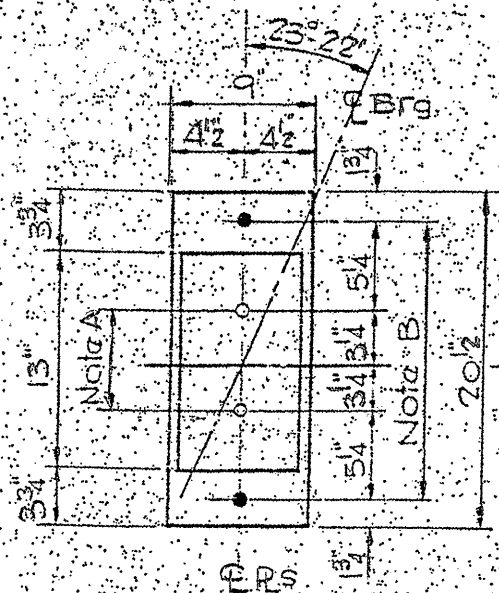
CONTRACT NO. 60K49



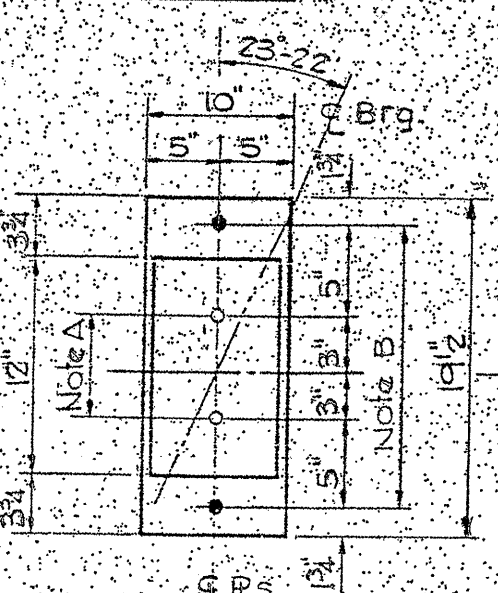
SECTION AT ABUTMENTS

PIER 2

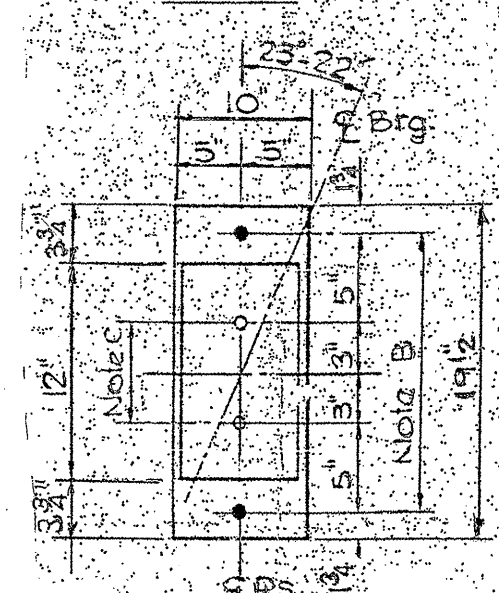
PIER 1



**NOTE A:**  
 1/8" Holes - 1" Deep  
 in top P for  
 pintles - Thread  
 or press fit pintles  
 into bottom P



**NOTE B:**  
 1/2" Holes for 1/2" anchor bolts  
 2 1/2" x 2 1/2" x 5/8" P  
 washer under nut



**NOTE C:**  
 1/8" Holes - 1" Deep  
 in top P only for  
 C Bedrms

**FOR INFORMATION ONLY**

ILLINOIS DEPARTMENT OF  
 TRANSPORTATION

EXISTING BRIDGE PLAN  
 LOCATION 2: SN 022-0143