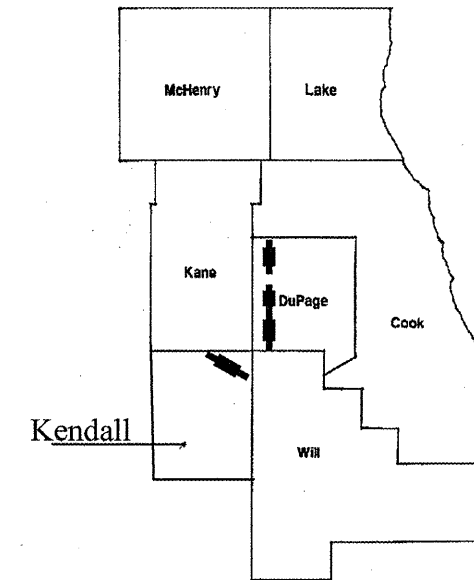


ROUTE	SECTION	COUNTY	TOTAL SHEETS	SHEET NUMBER
FAP 338 & 349	2010-022 BP	DUPAGE & KENDALL	25	1

FOR INDEX OF SHEETS SEE SHEET 2

CONTRACT NO. 60K49

D-91-517-10



LOCATION OF IMPROVEMENT INDICATED THUS: 

IMPROVEMENTS ARE LOCATED IN THE VILLAGE OF MONTGOMERY, THE CITY OF WEST CHICAGO AND WAYNE TOWNSHIP

STATE OF ILLINOIS  
DEPARTMENT OF TRANSPORTATION  
DIVISION OF HIGHWAYS  
DISTRICT ONE  
**PROPOSED HIGHWAY PLANS**

- 1) FAP RTE 338: IL 59 AT VARIOUS LOCATIONS  
(BRIDGE NOs 1, 2 & 3)
  - 2) FAP RTE 349: US 30 OVER RIVER STREET  
(BRIDGE NO. 4)
- SECTION 2010-022 BP  
BRIDGE PAINTING  
DUPAGE & KENDALL COUNTIES  
C-91-517-10

BRIDGE NO. 1: SN 022-0036  
BRIDGE NO. 2: SN 022-0143  
BRIDGE NO. 3: SN 022-0144  
BRIDGE NO. 4: SN 047-0030

PROJECT ENGINEER ROBERT BORO (847) 705-4178  
PROJECT MANAGER KEN ENG

CONTRACT NO. 60K49

STATE OF ILLINOIS  
DEPARTMENT OF TRANSPORTATION  
DIVISION OF HIGHWAYS

SUBMITTED: MARCH 25, 2010  
*Diane M. O'Keefe*  
DEPUTY DIRECTOR OF HIGHWAYS, REGION ENGINEER

MAY 7 2010  
*Scott E. Still* P.E.  
ENGINEER OF DESIGN AND ENVIRONMENT

MAY 7 2010  
*Christine M. Reed*  
DIRECTOR, DIVISION OF HIGHWAYS

PRINTED BY THE AUTHORITY  
OF THE STATE OF ILLINOIS

J.U.L.I.E.: JOINT UTILITY LOCATION  
INFORMATION FOR EXCAVATION  
(800) 892-0123 OR 811

ROUTE	SECTION	COUNTY	TOTAL SHEETS	SHEET NUMBER
FAP 338 & 349	2010-022 BP	DUPAGE & KENDALL	25	2

CONTRACT NO. 60K49

## INDEX OF SHEETS

- 1 TITLE SHEET
- 2 INDEX OF SHEETS, STATE STANDARDS AND GENERAL NOTES
- 3 GENERAL PAINT NOTES
- 4 SUMMARY OF QUANTITIES
- 5 - 6 LOCATION MAPS
- 7 - 11 EXISTING BRIDGE PLANS (BRIDGE NO. 1, SN 022-0036)
- 12 - 15 EXISTING BRIDGE PLANS (BRIDGE NO. 2, SN 022-0143)
- 16 - 18 EXISTING BRIDGE PLANS (BRIDGE NO. 3, SN 022-0144)
- 19 - 23 EXISTING BRIDGE PLANS (BRIDGE NO. 4, SN 047-0030)
- 24 TRAFFIC CONTROL FOR SHOULDERS CLOSURES AND PARTIAL RAMP CLOSURES (TC-17)
- 25 ARTERIAL ROAD INFORMATION SIGN (TC-22)

## STATE STANDARDS

- 701101-02 MULTILANE OFF-ROAD OPERATIONS, 15' TO 24" FROM PAVEMENT EDGE
- 701411-06 LANE CLOSURE, MULTILANE, AT ENTRANCE OR EXIT RAMP, FOR SPEEDS > 45 MPH
- 701426-03 MULTILANE, LANE CLOSURE, INTERMITTEN OR MOVING OPERATION FOR SPEEDS >45 MPH
- 701501-05 URBAN LANE CLOSURE, 2L, 2W, UNDIVIDED
- 701601-06 URBAN LANE CLOSURE, MULTILANE, 1W OR 2W WITH NONTRAVERSABLE MEDIAN
- 701606-06 URBAN LANE CLOSURE, MULTILANE, 2W WITH MOUNTABLE MEDIAN
- 701901-01 TRAFFIC CONTROL DEVICES

## GENERAL NOTES

BEFORE STARTING ANY EXCAVATION, THE CONTRACTOR SHALL CALL "J.U.L.I.E." AT (800) 892-0123 OR 811 FOR FIELD LOCATIONS OF BURIED ELECTRIC, TELEPHONE AND GAS UTILITIES. 48 HOURS NOTIFICATION IS REQUIRED.

THE CONTRACTOR SHALL COORDINATE CONSTRUCTION ACTIVITIES WITH UTILITY COMPANIES, THE CITY OF WEST CHICAGO & THE VILLAGE OF MONTGOMERY.

IT SHALL BE THE CONTRACTOR'S RESPONSIBILITY TO VERIFY ALL DIMENSIONS & CONDITIONS EXISTING IN THE FIELD PRIOR TO CONSTRUCTION & ORDERING OF MATERIALS.

THE CONTRACTOR WILL NOT BE ALLOWED TO SET UP A YARD OR FIELD OFFICE ON STATE PROPERTY WITHOUT WRITTEN PERMISSION FROM THE DEPARTMENT.

THE CONTRACTOR SHALL CONTACT THE DISTRICT ONE TRAFFIC CONTROL SUPERVISOR AT (847) 705-4470 FOR ARTERIALS A MINIMUM OF 72 HOURS IN ADVANCE OF BEGINNING WORK.

THE CONTRACTOR SHALL BE REQUIRED TO PROVIDE ACCESS TO ABUTTING PROPERTY AT ALL TIMES DURING THE CONSTRUCTION OF THIS PROJECT.

DO NOT SCALE PLANS FOR CONSTRUCTION DIMENSIONS.

IT SHALL BE THE CONTRACTOR'S RESPONSIBILITY TO PROTECT AND PRESERVE THE EXISTING BRIDGE LIGHTING AT ANY LOCATIONS THAT LIGHTING IS ENCOUNTERED ADJACENT TO AN AREA TO BE CLEANED AND PAINTED.

**ILLINOIS DEPARTMENT OF  
TRANSPORTATION**

**GENERAL NOTES  
INDEX OF SHEETS  
STATE STANDARDS**

ROUTE	SECTION	COUNTY	TOTAL SHEETS	SHEET NUMBER
FAP 338 & 349	2010-022 BP	DUPAGE & KENDALL	25	3

CONTRACT 60K49

**GENERAL NOTES FOR PAINT**

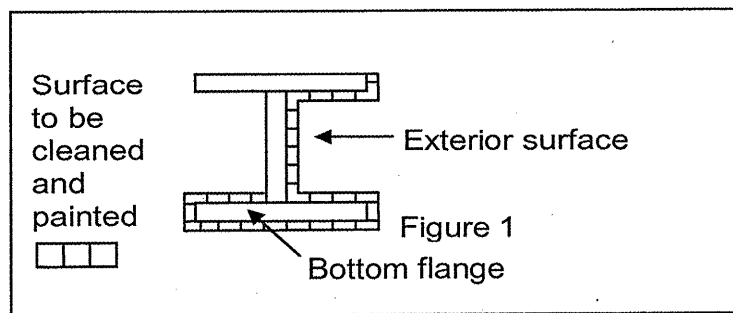
CLEANING AND PAINTING OF THE EXISTING STRUCTURAL STEEL SHALL BE AS SPECIFIED IN THE SPECIAL PROVISION FOR "CLEANING AND PAINTING EXISTING STEEL STRUCTURES".

A MINIMUM OF FOUR (4 ) AT LOCATIONS 1 AND 2 (S.N. 022-0036 & 022-0143), THREE (3) AT LOCATION 3 (S.N. 022-0144) AND TWO (2) AT LOCATION 4 (S.N. 047-0030) AIR MONITORS WILL BE REQUIRED TO MONITOR ABRASIVE BLASTING OPERATIONS FOR ALL STRUCTURES. SEE SPECIAL PROVISION FOR "CONTAINMENT AND DISPOSAL OF LEAD PAINT CLEANING RESIDUE."

THE AREAS DESIGNATED TO BE CLEANED PER NEAR WHITE BLAST CLEANING SSPC-SP10 SHALL BE PAINTED ACCORDING TO THE REQUIREMENTS OF PAINT SYSTEM 1 - OZ/E/U. ALL OTHER LOCATIONS: THE COLOR OF THE FINAL FINISH COAT FOR ALL INTERIOR STEEL SURFACES SHALL BE GRAY, MUNSELL NO 5B 7/1. THE COLOR OF THE FINAL FINISH COAT FOR THE EXTERIOR AND BOTTOM FLANGE OF THE FASCIA BEAMS SHALL BE REDDISH BROWN, MUNSELL NO 2.5YR 3/4.

ALL ITEMS (SUCH AS, BUT NOT LIMITED TO: CONDUITS, BRACKETS AND DECK DRAINS) ATTACHED TO THE OUTSIDE OF THE FASCIA BEAMS SHOULD BE CLEANED AND PAINTED.

ALL BEAMS, BEARINGS AND OTHER STRUCTURAL STEEL WITHIN FIVE (5) FT., (MEASURED ALONG THE BEAM) OF EITHER SIDE OF ALL DECK JOINTS, SHALL BE CLEANED PER NEAR WHITE BLAST CLEANING SSPC-SP10. THE EXTERIOR SURFACES AND TOP AND BOTTOM OF THE BOTTOM FLANGE OF THE FASCIA BEAMS (SEE FIGURE 1) SHALL BE CLEANED PER NEAR WHITE BLAST CLEANING SSPC-SP10.



**FASCIA BEAM PAINTING DETAIL**

**FIGURE 1**

ILLINOIS DEPARTMENT OF TRANSPORTATION  
  
GENERAL PAINT NOTES

<b>ROUTE</b>	<b>SECTION</b>	<b>COUNTY</b>	<b>TOTAL SHEETS</b>	<b>SHEET NUMBER</b>
FAP 338 & 349	2010-022 BP	DUPAGE & KENDALL	25	4

CONTRACT NO. 60K49

SUMMARY OF QUANTITIES							
CODE NO	DESCRIPTION	UNITS	TOTAL	CONSTRUCTION TYPE CODE: SFTY - 2A			
				DUPAGE COUNTY <i>FAP 338 (14 59)</i>			KENDALL COUNTY <i>FAP 349 (US 30)</i>
				BRIDGE NO. 1 SN 022-0036	BRIDGE NO. 2 SN 022-0143	BRIDGE NO. 3 SN 022-0144	BRIDGE NO. 4 SN 047-0030
50600600	CLEANING AND PAINTING STEEL BRIDGE NO. 1	L SUM	1	1			
50600700	CLEANING AND PAINTING STEEL BRIDGE NO. 2	L SUM	1		1		
50600800	CLEANING AND PAINTING STEEL BRIDGE NO. 3	L SUM	1			1	
50600900	CLEANING AND PAINTING STEEL BRIDGE NO. 4	L SUM	1				1
50606400	CONTAINMENT AND DISPOSAL OF LEAD PAINT CLEANING RESIDUES	L SUM	1	0.20	0.30	0.25	0.25
67000400	ENGINEER'S FIELD OFFICE, TYPE A	CAL MO	6	1.5	1.5	1.5	1.5
67100100	MOBILIZATION	L SUM	1	0.25	0.25	0.25	0.25
70102620	TRAFFIC CONTROL AND PROTECTION, STANDARD 701501	L SUM	1				1
70102625	TRAFFIC CONTROL AND PROTECTION, STANDARD 701606	L SUM	1	0.33	0.33	0.34	
70102630	TRAFFIC CONTROL AND PROTECTION, STANDARD 701601	L SUM	1	0.50			0.50
X0322256	TEMPORARY INFORMATION SIGNING	SQ FT	179.9	51.4	51.4	51.4	25.7
Z0048665	RAILROAD PROTECTIVE LIABILITY INSURANCE	L SUM	1		1		

ILLINOIS DEPARTMENT OF  
TRANSPORTATION  
  
SUMMARY OF QUANTITIES

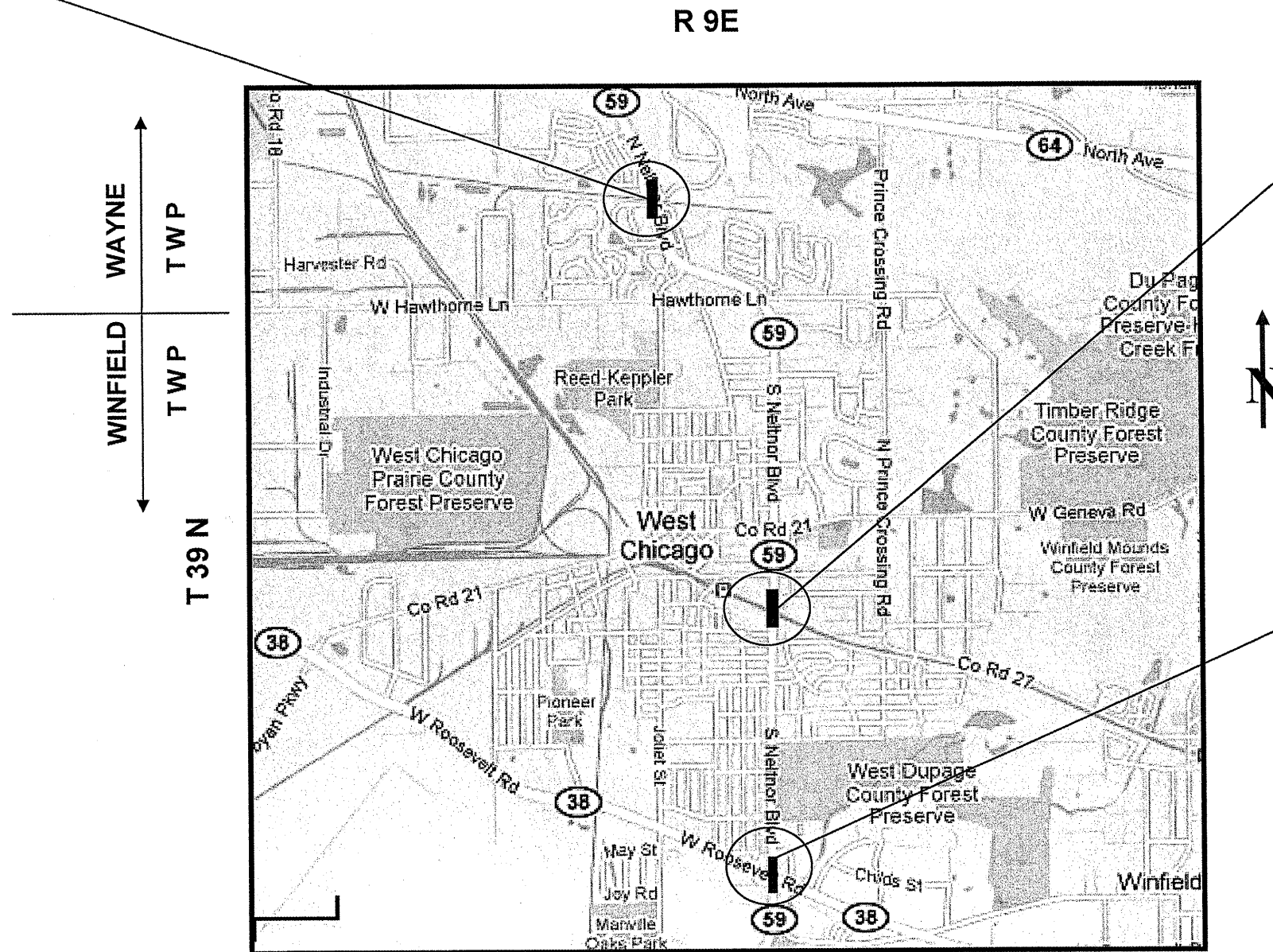
ROUTE	SECTION	COUNTY	TOTAL SHEETS	SHEET NUMBER
FAP 338 & 349	2010-022BP	DUPAGE & KENDALL	25	5

CONTRACT NO. 60K49

LOCATION 3: SN 022-0144  
IL 59 (NELTNOR BLVD) OVER  
ABANDONED RR  
WAYNE TOWNSHIP

LOCATION 2: SN 022-0143  
IL 59 (NELTNOR BLVD) OVER -  
UP & CN RR'S  
CITY OF WEST CHICAGO

LOCATION 1: SN 022-0036  
IL 59 (NELTNOR BLVD) OVER  
IL 38 (ROOSEVELT RD)  
CITY OF WEST CHICAGO



WAYNE AND WINFIELD TOWNSHIPS  
DUPAGE COUNTY

**TRAFFIC DATA**

**LOCATION 1:**  
IL 59 (NELTNOR BLVD):

2009 ADT = 25900  
POSTED SPEED LIMIT = 45 MPH

**IL 38 (ROSEVELT RD):**

2009 ADT = 19850  
POSTED SPEED LIMIT = 45 MPH

**LOCATION 2:**

2009 ADT = 31700  
POSTED SPEED LIMIT = 35 MPH

**LOCATION 3:**

2009 ADT = 27600  
POSTED SPEED = 45 MPH

ILLINOIS DEPARTMENT OF  
TRANSPORTATION  
LOCATION MAP  
LOCATION 1: SN 022-0036  
LOCATION 2: SN 022-0143  
LOCATION 3: SN 022-0144

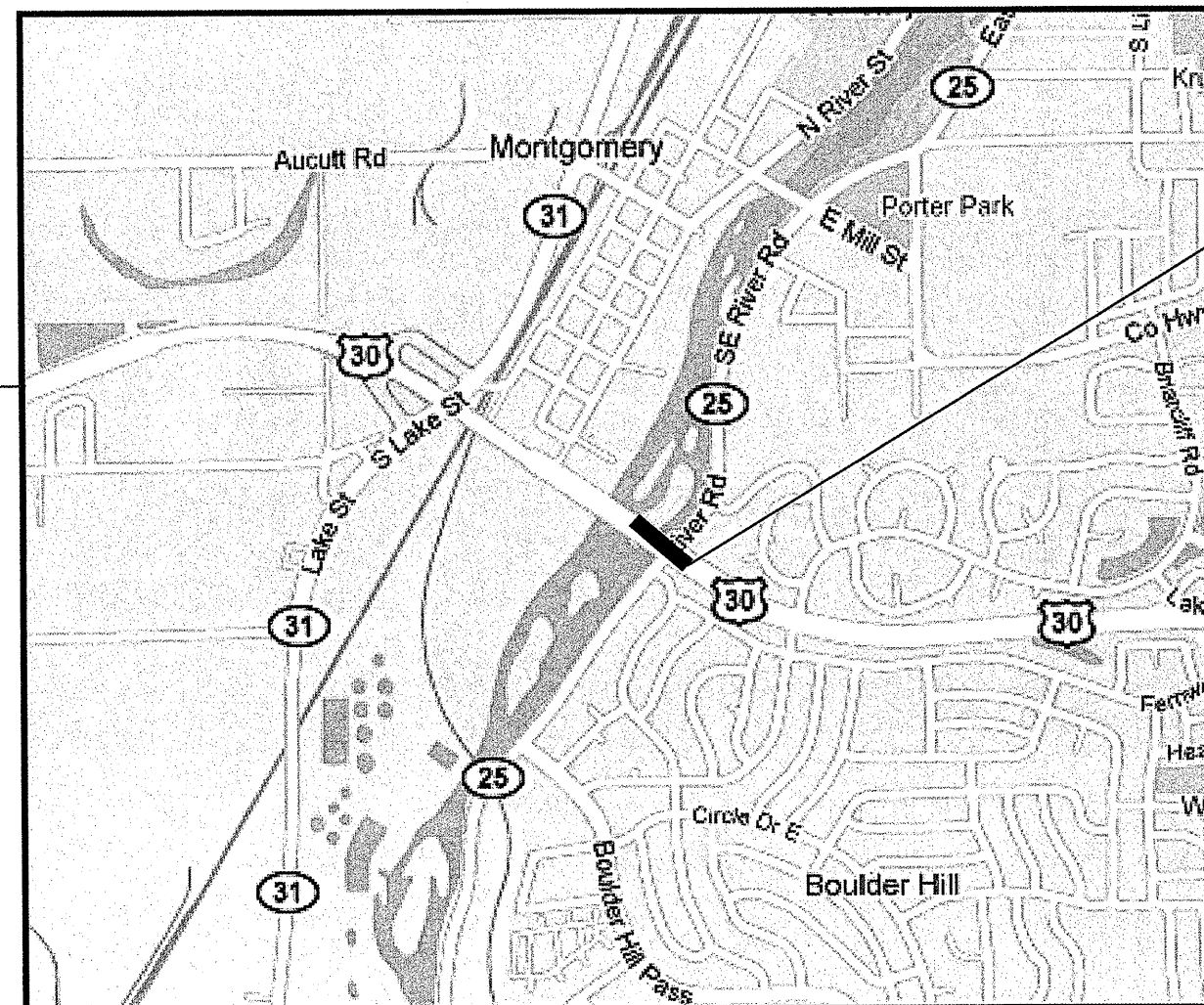
ROUTE	SECTION	COUNTY	TOTAL SHEETS	SHEET NUMBER
FAP 338 & 349	2010-022 BP	DUPAGE & KENDALL	25	6

CONTRACT NO. 60K49

R 8 E

T 38 N  
KANE CO  
AURORA TWP

T 37 N  
KENDALL CO  
OSWEGO TWP



LOCATION 4:  
SN 047-0030  
US 30 OVER RIVER ST  
VILLAGE OF MONTGOMERY



**TRAFFIC DATA**

US 30:  
2009 ADT = 30500  
POSTED SPEED LIMIT = 50 MPH

RIVER STREET:  
ADT NOT COUNTED  
POSTED SPEED LIMIT = 25 MPH

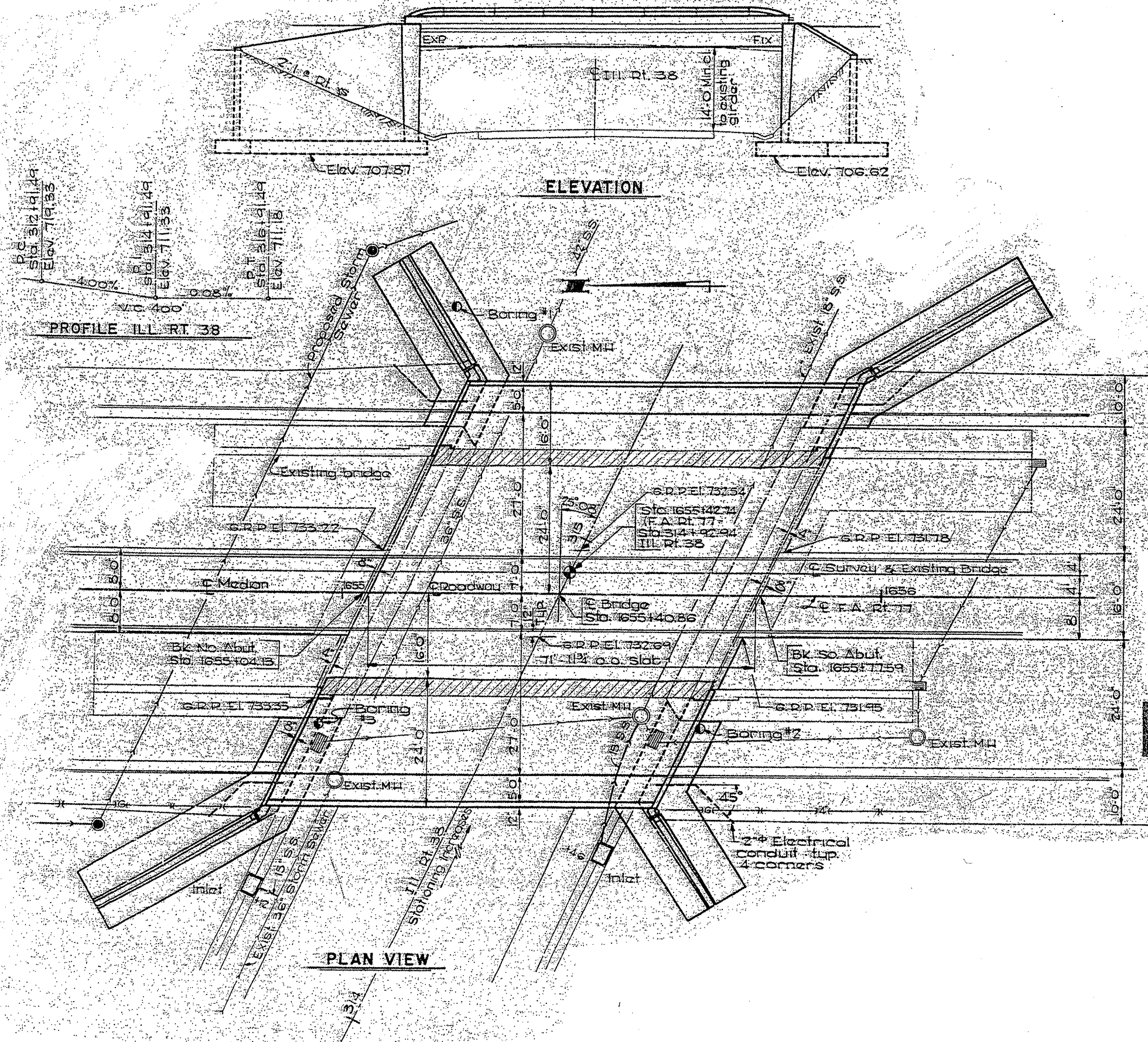
OSWEGO TOWNSHIP  
KANE & KENDALL COUNTIES

ILLINOIS DEPARTMENT OF  
TRANSPORTATION

LOCATION MAP  
LOCATION 4: SN 047-0030

ROUTE	SECTION	COUNTY	TOTAL SHEETS	SHEET NUMBER
FAP 338 & 349	2010-022 BP	DUPAGE & KENDALL	25	7

CONTRACT NO. 60K49



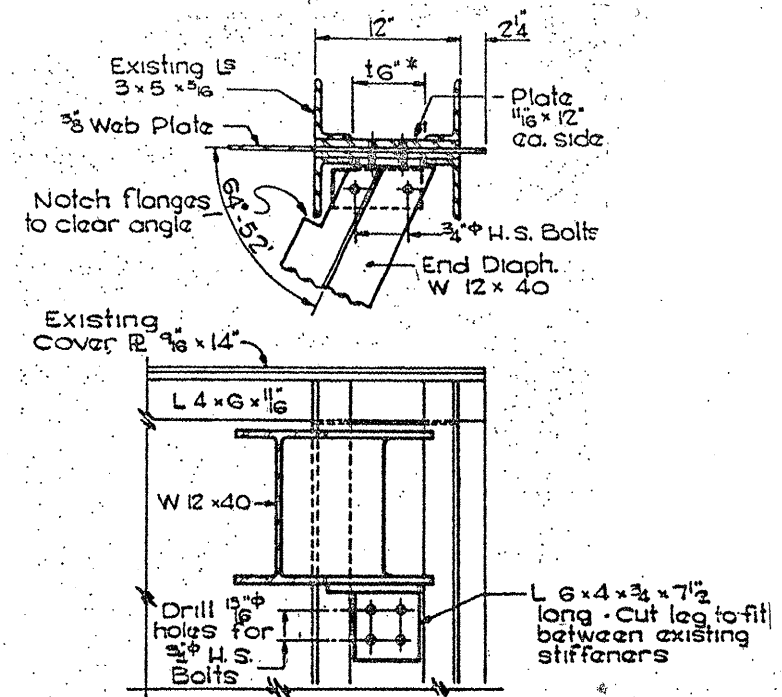
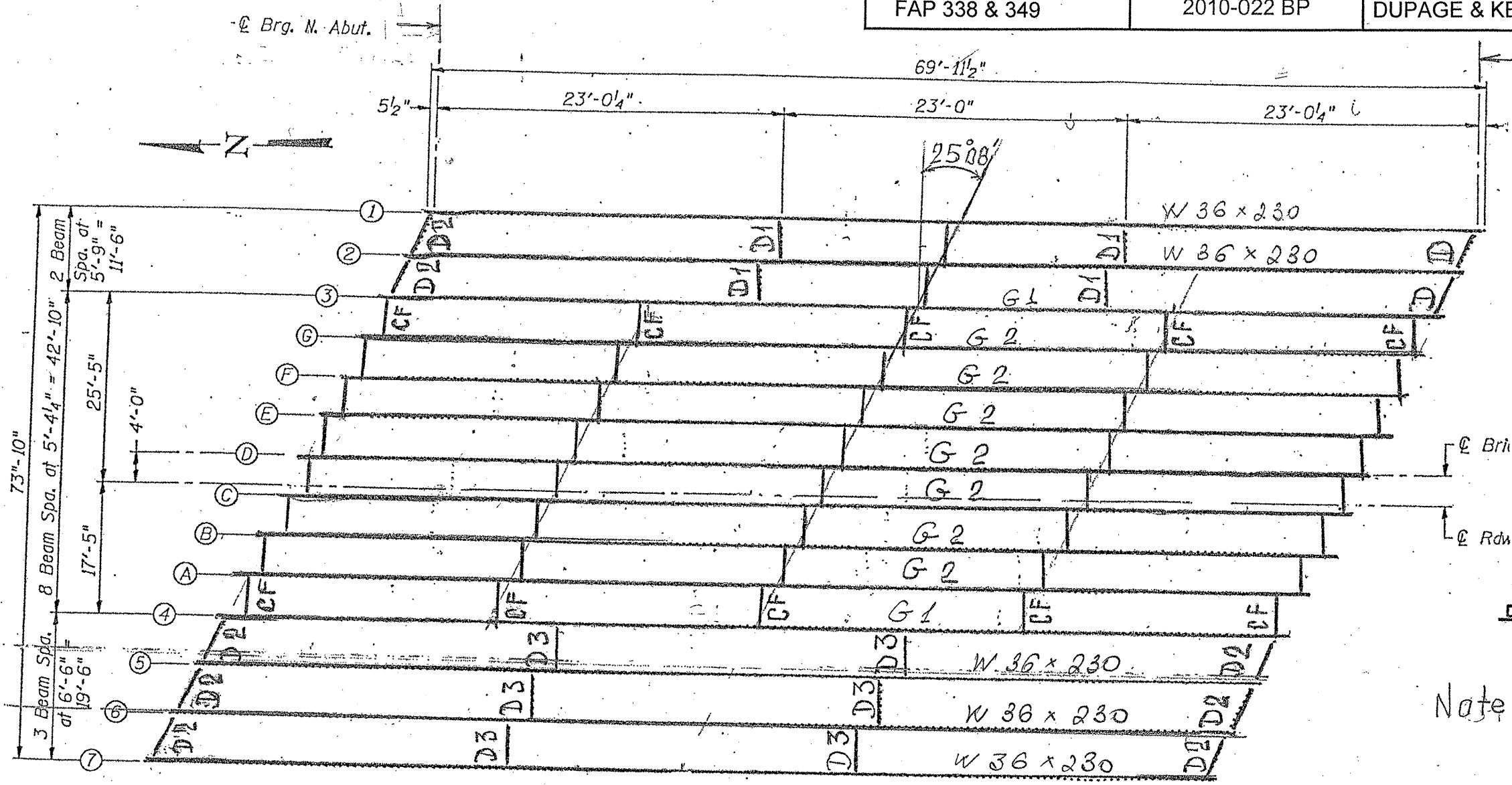
FOR INFORMATION ONLY

ILLINOIS DEPARTMENT OF  
TRANSPORTATION

EXISTING BRIDGE PLAN  
LOCATION 1: SN 022-0036

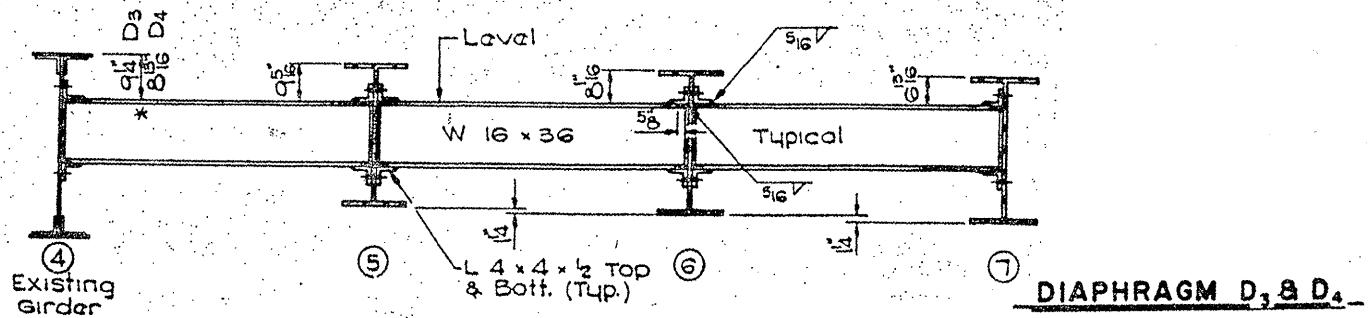
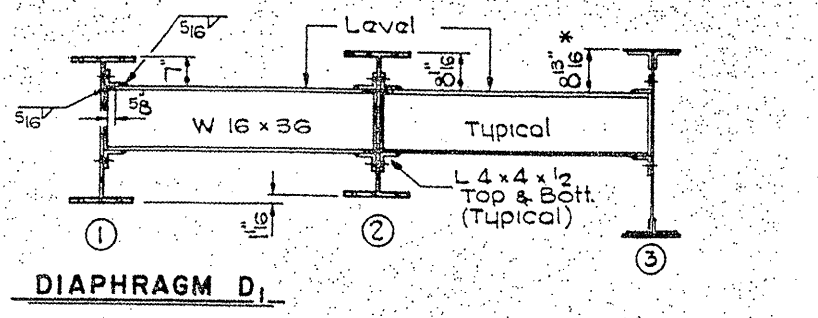
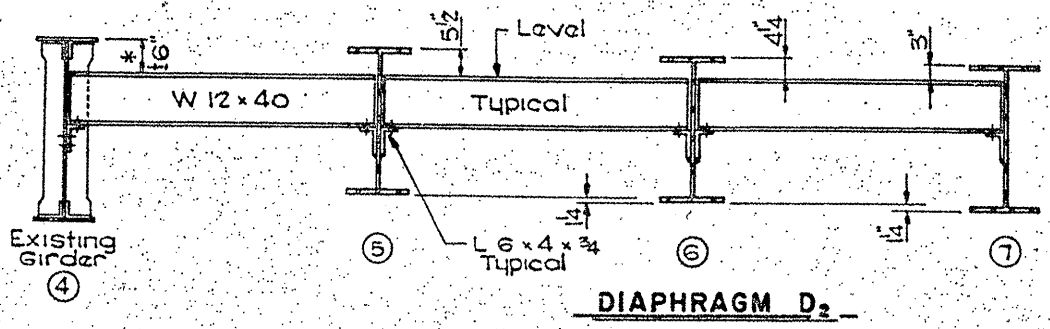
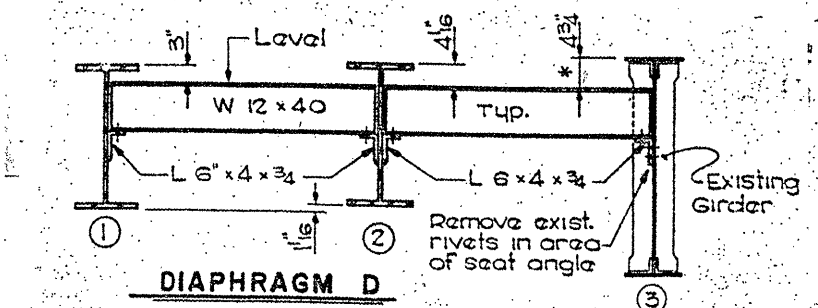
ROUTE	SECTION	COUNTY	TOTAL SHEETS	SHEET NUMBER
FAP 338 & 349	2010-022 BP	DUPAGE & KENDALL	25	8

CONTRACT NO. 60K49



DETAIL OF SEAT CONNECTION AT EXISTING GIRDER

Note: Girders G1 and G2 and Cross Frames (CF) see Sht. # 11 of 25



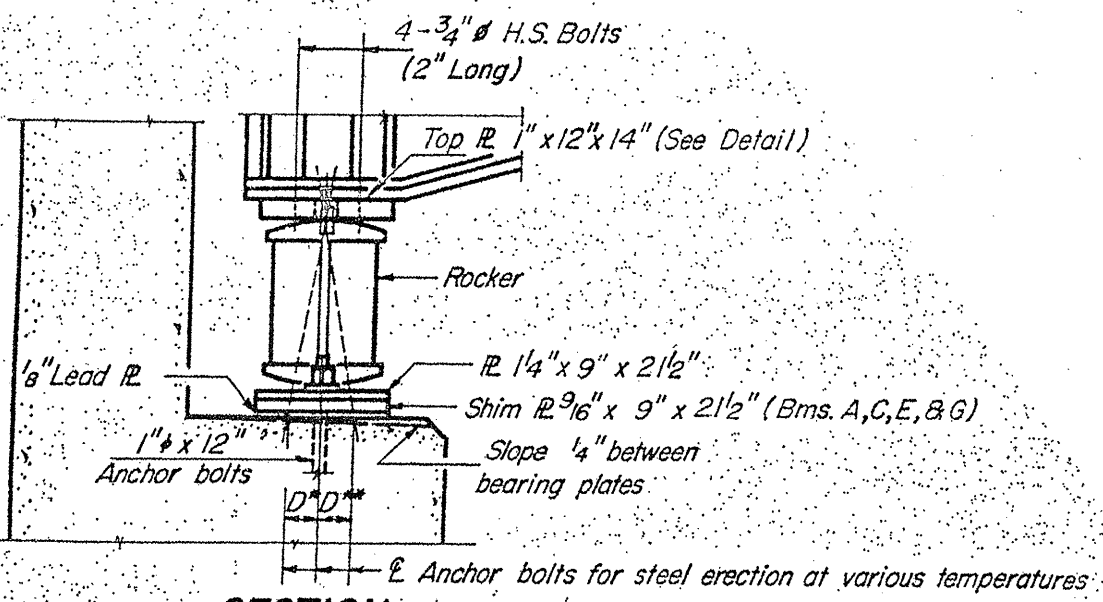
FOR INFORMATION ONLY

ILLINOIS DEPARTMENT OF TRANSPORTATION  
 EXISTING BRIDGE PLAN  
 LOCATION 1: SN 022-0036

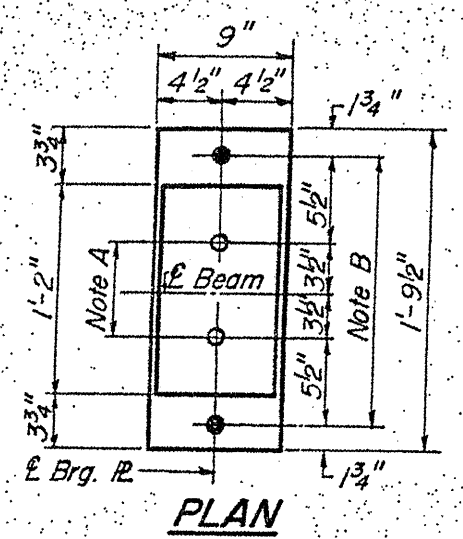


ROUTE	SECTION	COUNTY	TOTAL SHEETS	SHEET NUMBER
FAP 338 & 349	2010-022 BP	DUPAGE & KENDALL	25	9

CONTRACT NO. 60K49

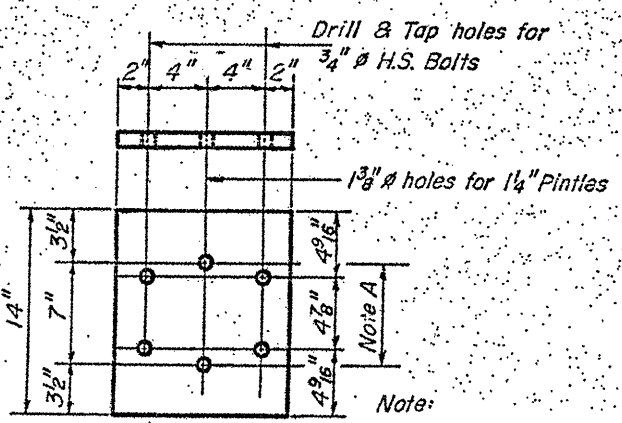


**SECTION**



**PLAN**

**AT N. ABUTMENT**  
(For Bms. A thru G & #3)



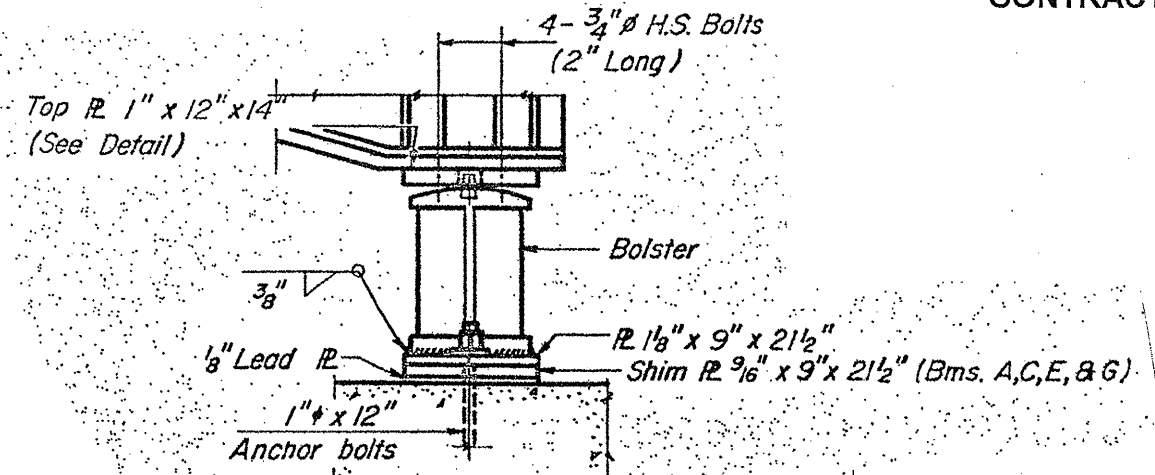
**TOP PLATE**

**NOTE A**

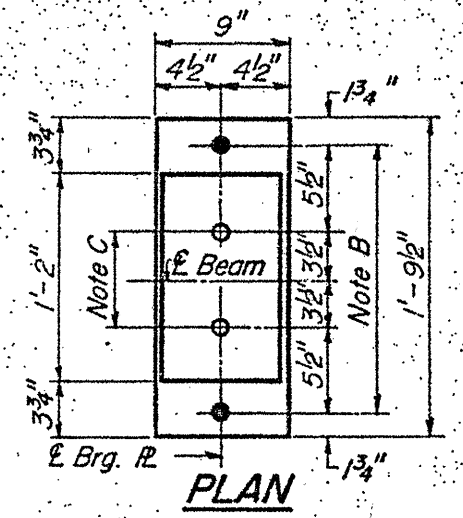
1 3/8" Holes - 1" deep in top pl. for pintles. Thread or press fit pintles into bottom pl.

**NOTE B**

1/2" Holes for 1" anchor bolts. 5/16 x 2 1/2 x 2 1/2" R. Washers under nut.



**SECTION**

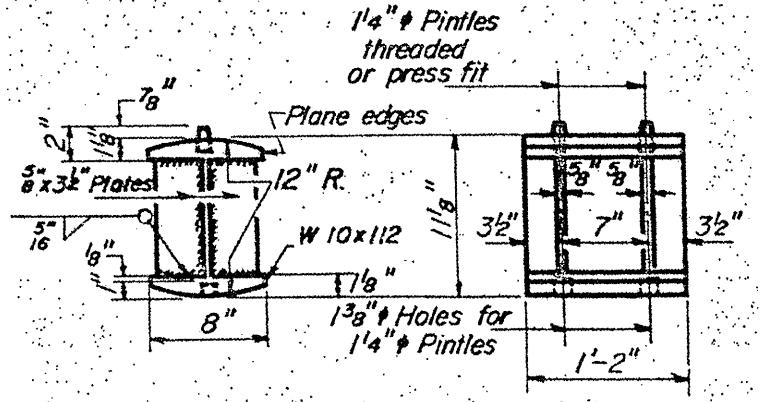


**PLAN**

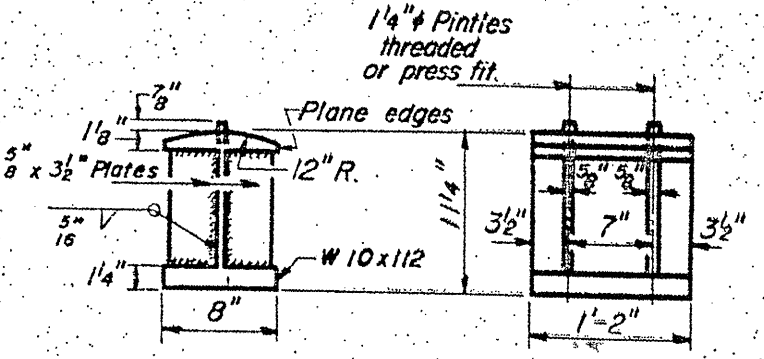
**AT S. ABUT.**

(For Bms. A thru G & #3)

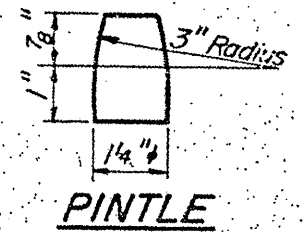
**BEARING ASSEMBLY DETAILS**



**ROCKER**



**BOLSTER**



**PINTLE**

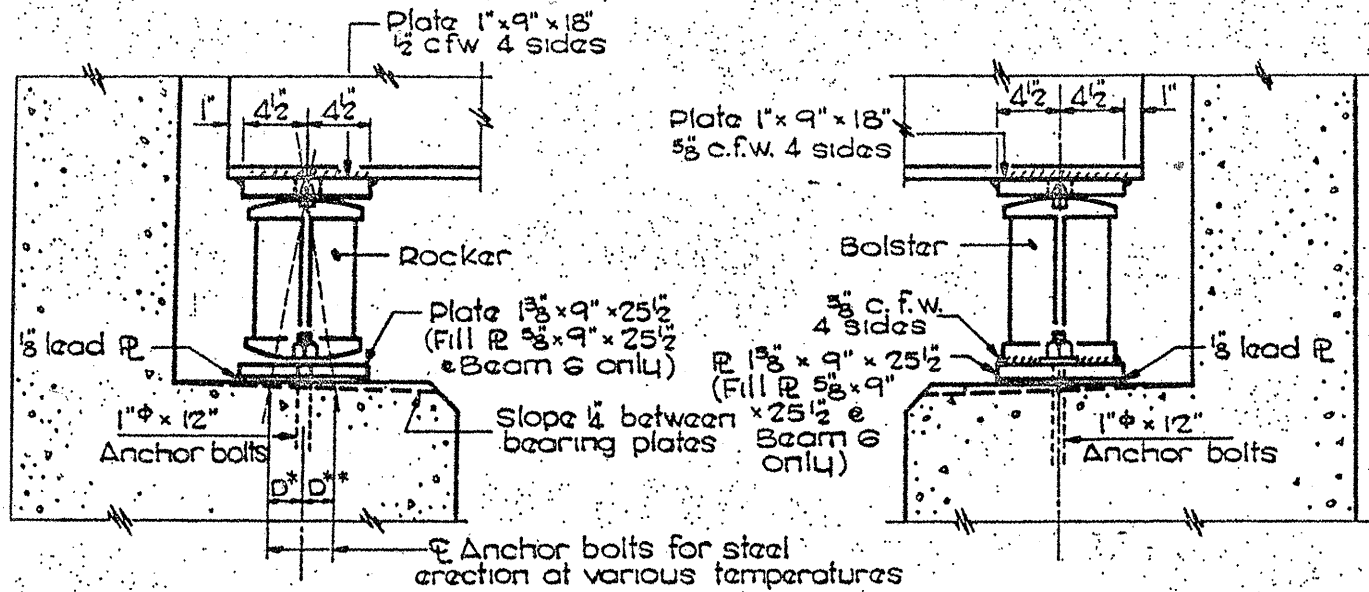
**FOR INFORMATION ONLY**

ILLINOIS DEPARTMENT OF  
TRANSPORTATION

EXISTING BRIDGE PLAN  
LOCATION 1: SN 022-0036

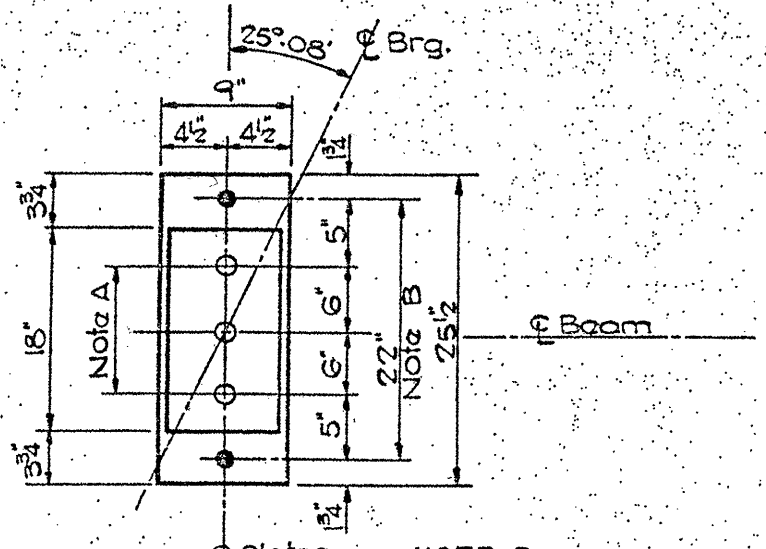
ROUTE	SECTION	COUNTY	TOTAL SHEETS	SHEET NUMBER
FAP 338 & 349	2010-022 BP	DUPAGE & KENDALL	25	10

CONTRACT NO. 60K49



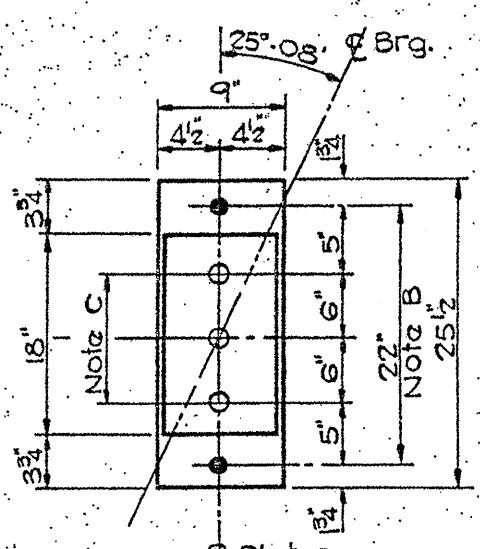
**ELEVATION**

**ELEVATION**



**PLAN**

**NORTH ABUT.**



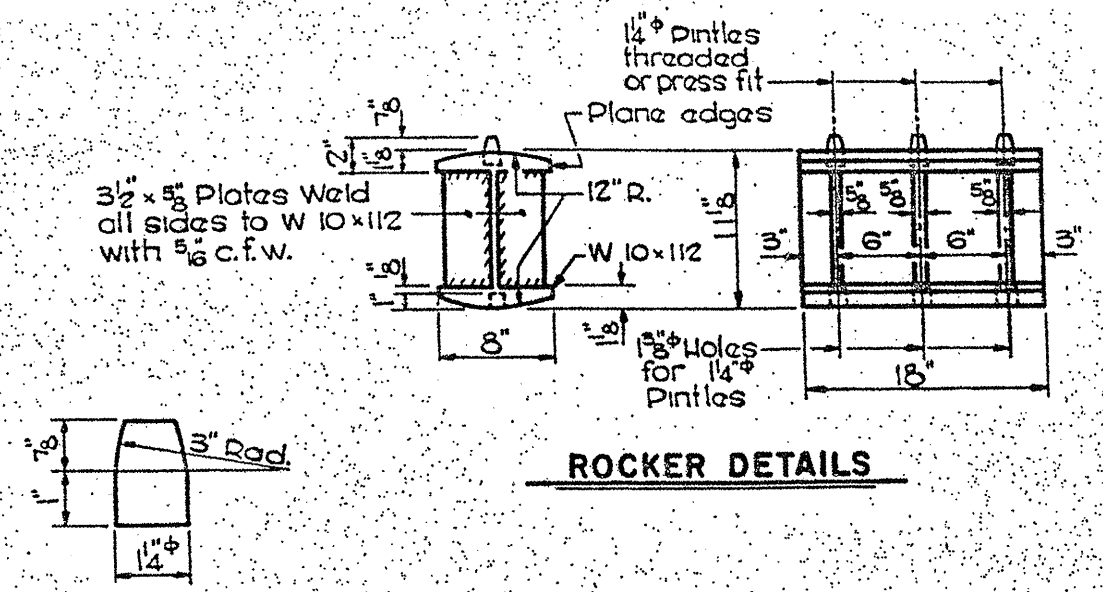
**PLAN**

**SOUTH ABUT.**

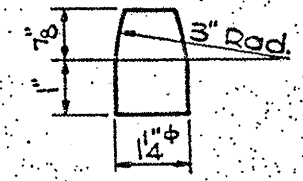
**NOTE B**  
 1 1/2"  $\phi$  Holes for 1"  $\phi$  anchor bolts  
 2 1/2" x 2 1/2" x 5/16" Plate Washer under nuts.

**BEARING ASSEMBLY DETAILS**

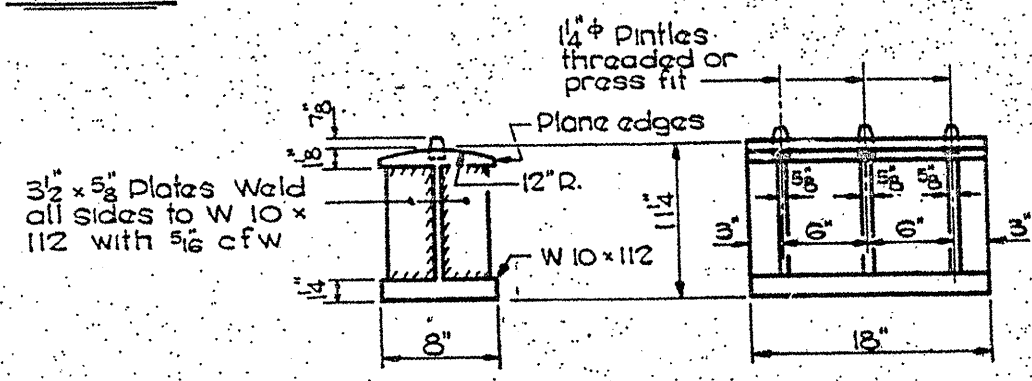
Beams 1, 2 and 5, 6, 7



**ROCKER DETAILS**



**PINTLE**



**BOLSTER DETAILS**

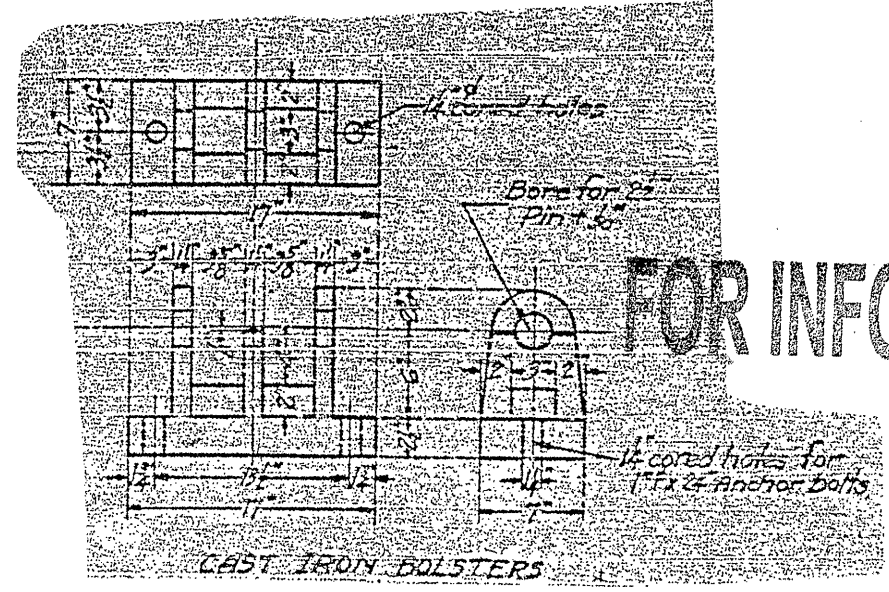
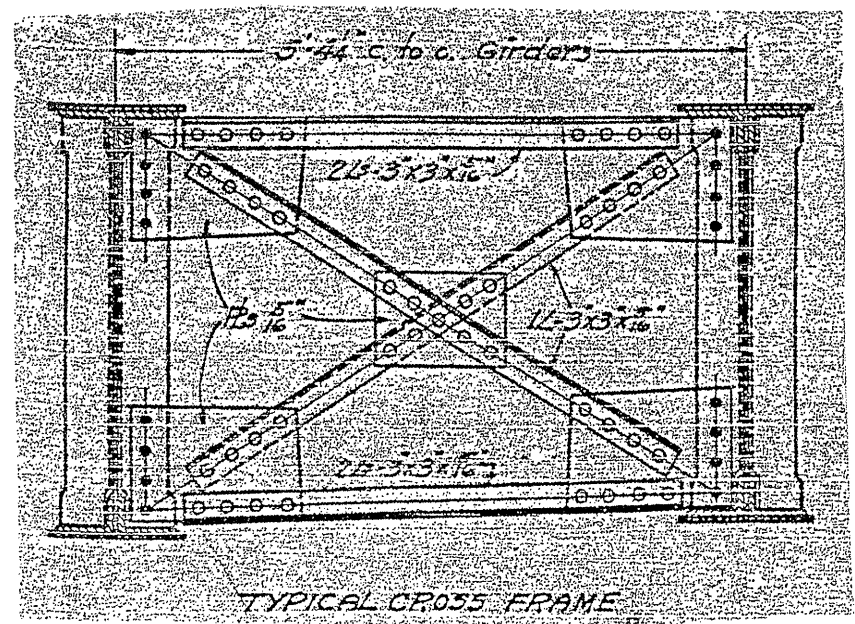
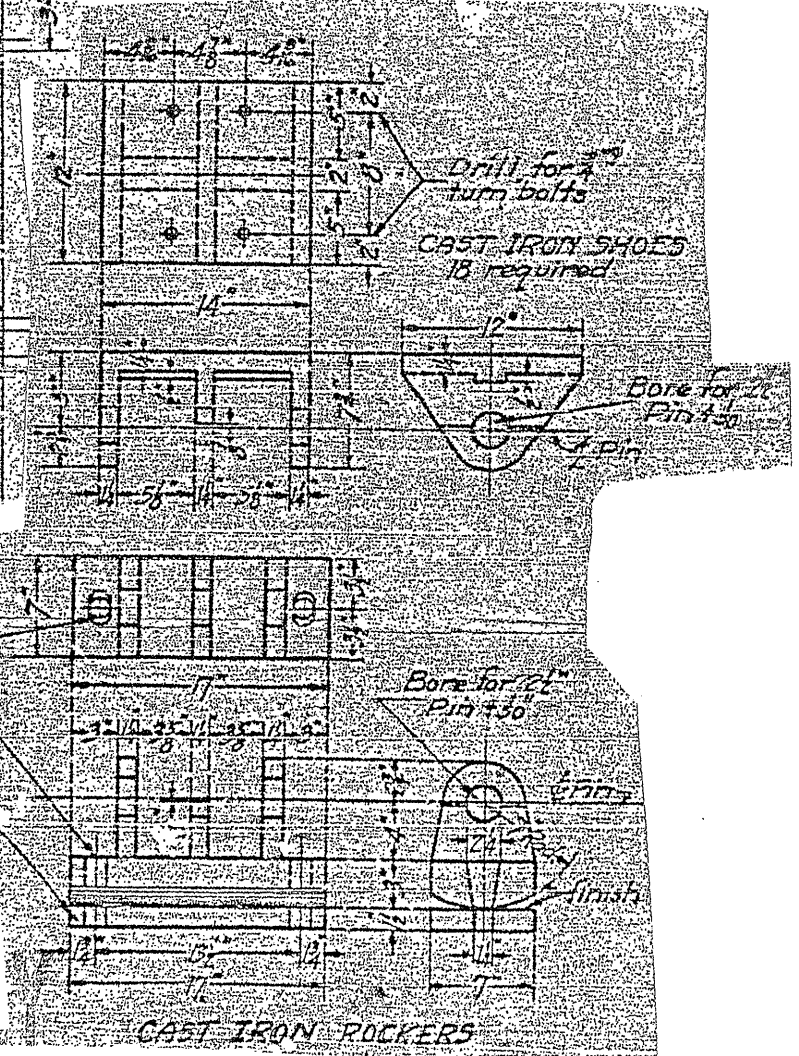
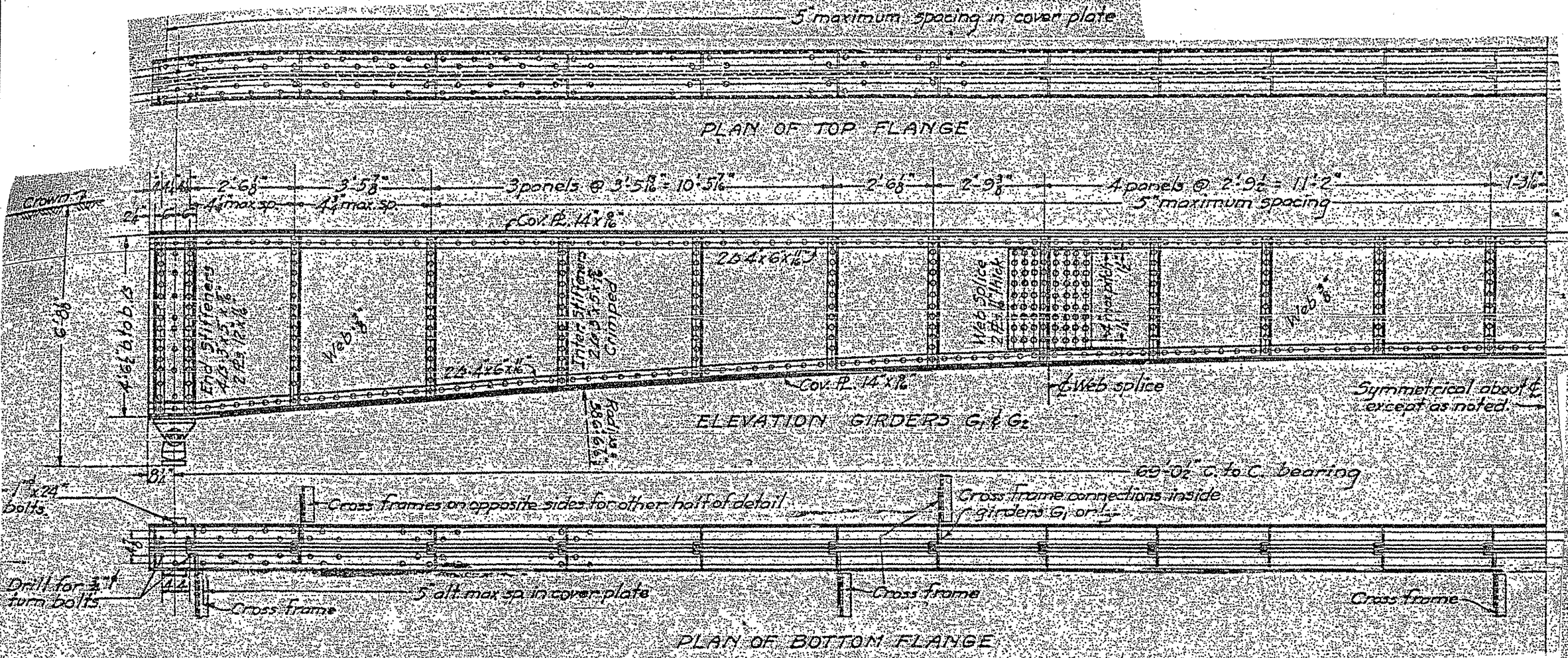
**FOR INFORMATION ONLY**

ILLINOIS DEPARTMENT OF  
 TRANSPORTATION

EXISTING BRIDGE PLAN  
 LOCATION 1: SN 022-0036

ROUTE	SECTION	COUNTY	TOTAL SHEETS	SHEET NUMBER
FAP 338 & 349	2010-022 BP	DUPAGE & KENDALL	25	11

CONTRACT NO. 60K49



FOR INFORMATION ONLY

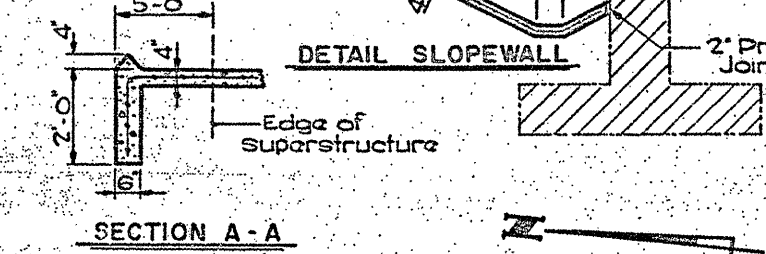
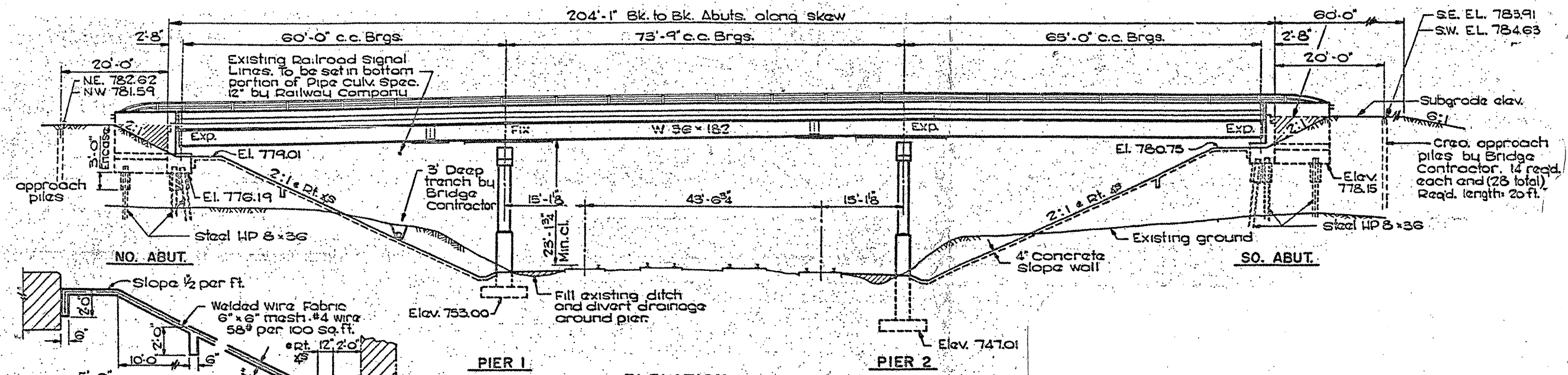
ILLINOIS DEPARTMENT OF TRANSPORTATION

EXISTING BRIDGE PLAN

LOCATION 1: SN 022-0036

ROUTE	SECTION	COUNTY	TOTAL SHEETS	SHEET NUMBER
FAP 338 & 349	2010-022 BP	DUPAGE & KENDALL	25	12

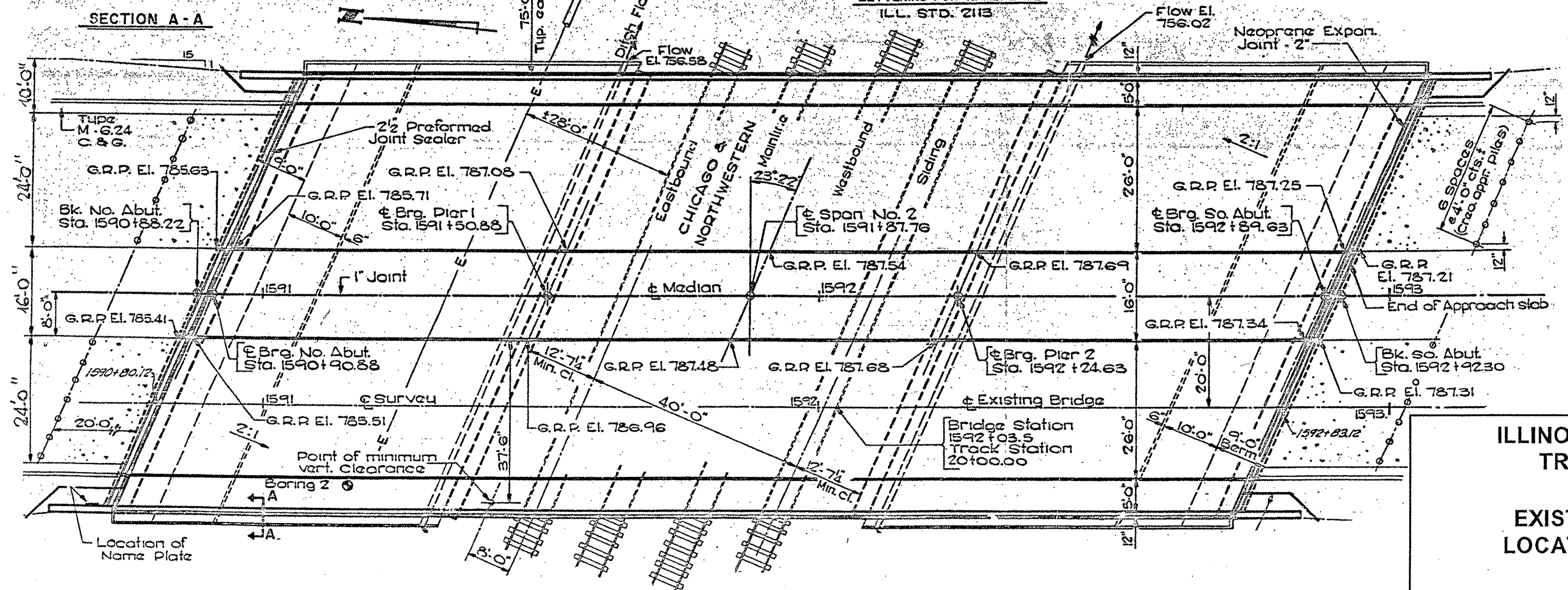
CONTRACT NO. 60K49



STATION 1591+87.76  
 BUILT 1977 BY  
 STATE OF ILLINOIS  
 F.A. RT. 77 SEC. III VB-2  
 F.A. PROJ. U-U8-176(21)  
 LOADING HS 20

LETTERING FOR NAMEPLATE  
 ILL. STD. 2113

FOR INFORMATION ONLY

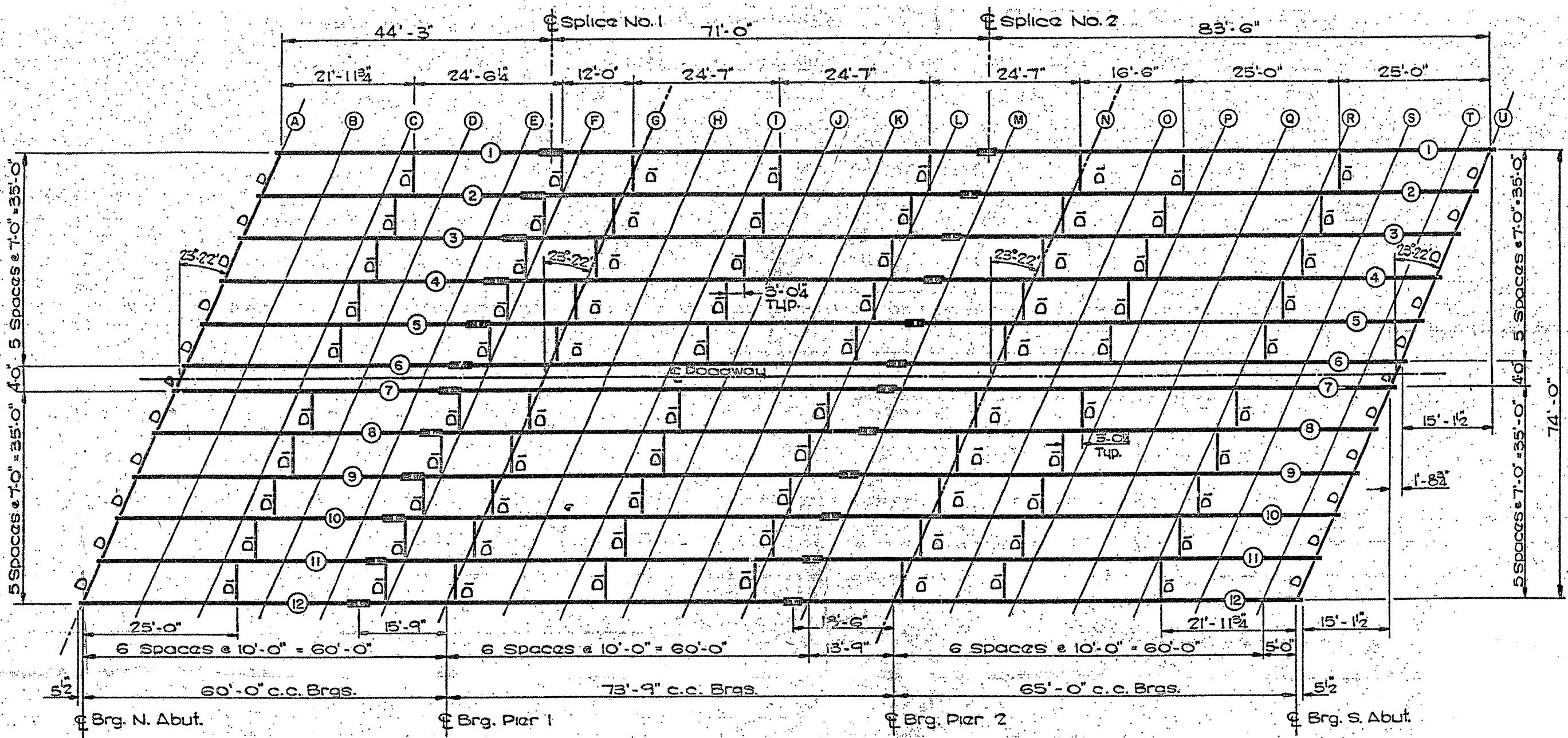


ILLINOIS DEPARTMENT OF  
 TRANSPORTATION

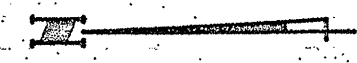
EXISTING BRIDGE PLAN  
 LOCATION 2: SN 022-0143

ROUTE	SECTION	COUNTY	TOTAL SHEETS	SHEET NUMBER
FAP 338 & 349	2010-022 BP	DUPAGE & KENDALL	25	18

CONTRACT NO. 60K49



**FRAMING PLAN**  
All Beams W 36 x 182



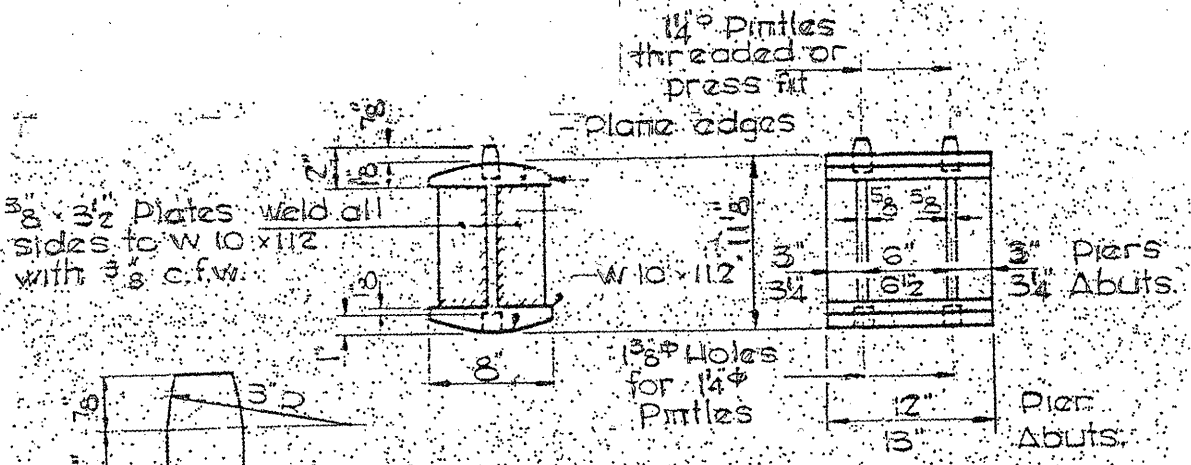
**FOR INFORMATION ONLY**

ILLINOIS DEPARTMENT OF  
TRANSPORTATION

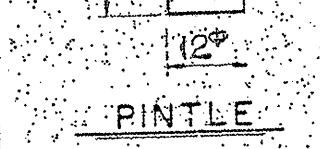
EXISTING BRIDGE PLAN  
LOCATION 2: SN 022-0143

ROUTE	SECTION	COUNTY	TOTAL SHEETS	SHEET NUMBER
FAP 338 & 349	2010-022 BP	DUPAGE & KENDALL	25	14

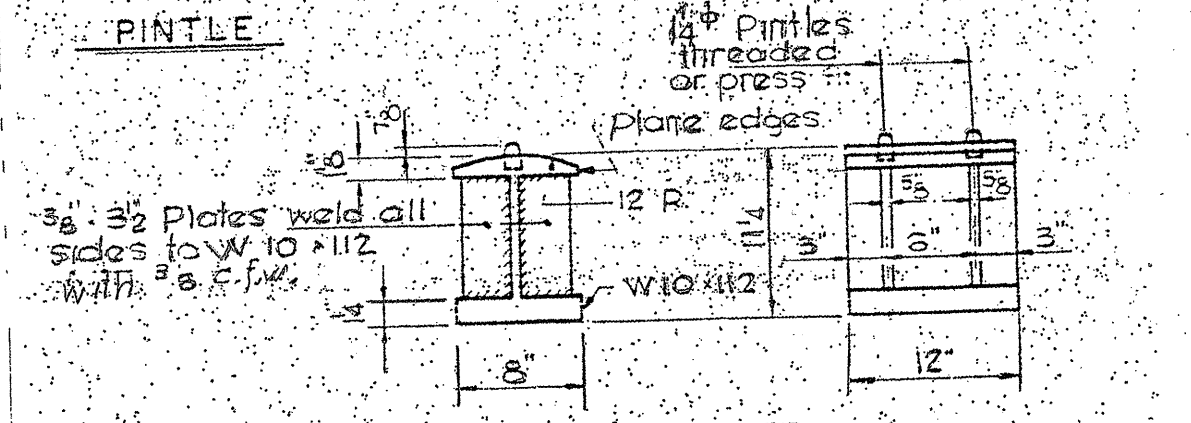
CONTRACT NO. 60K49



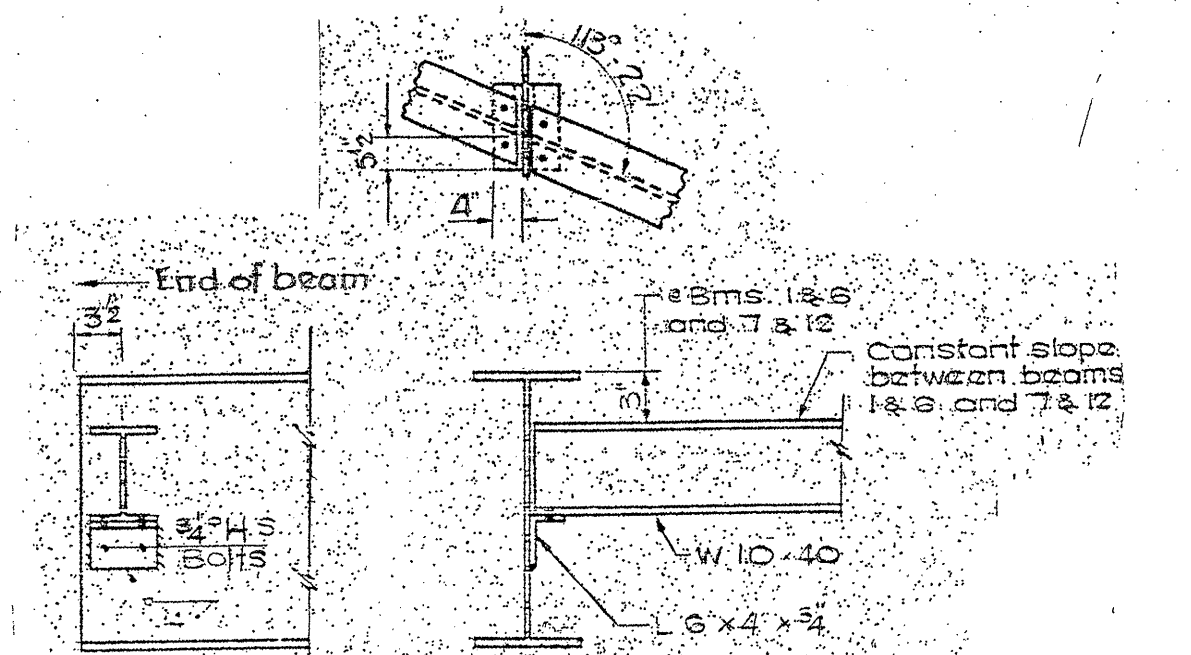
ROCKER



PINTLE

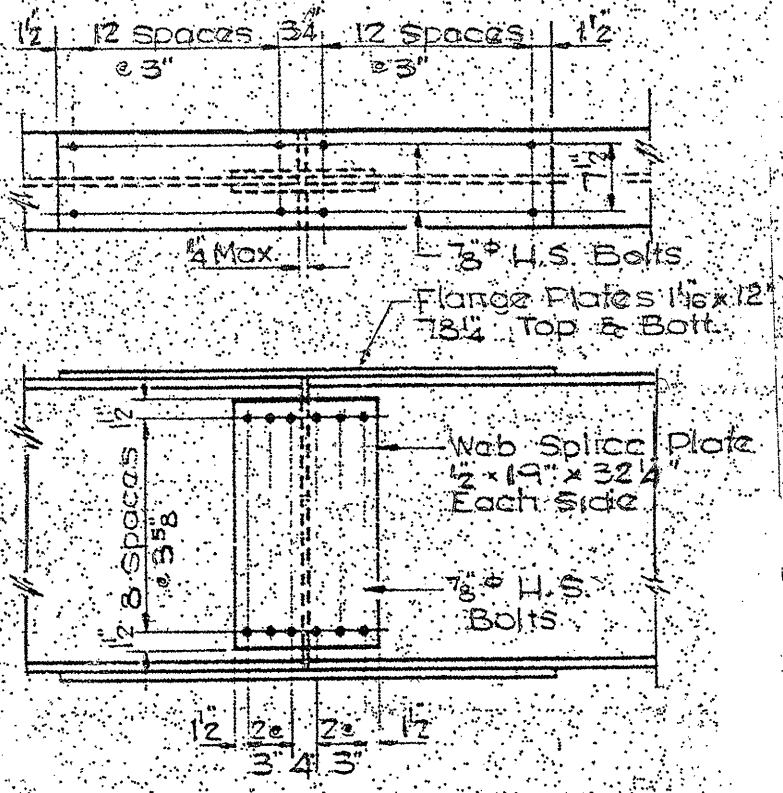


BOLSTER

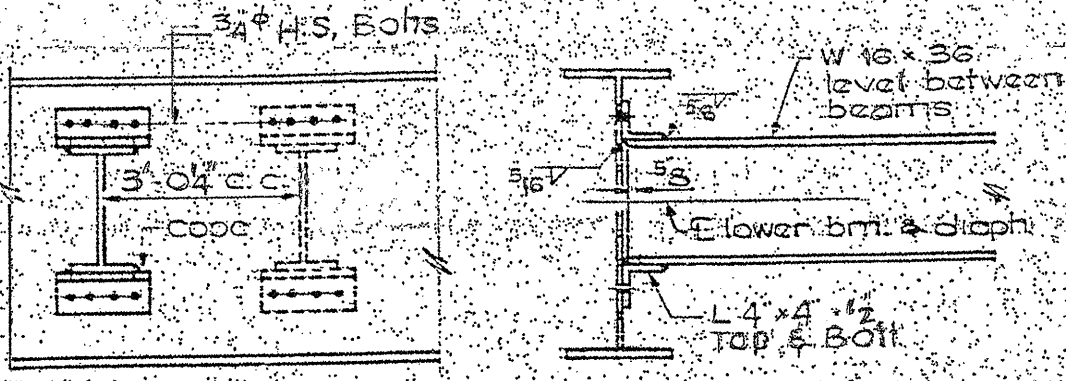


DIAPHRAGM D

20 Road

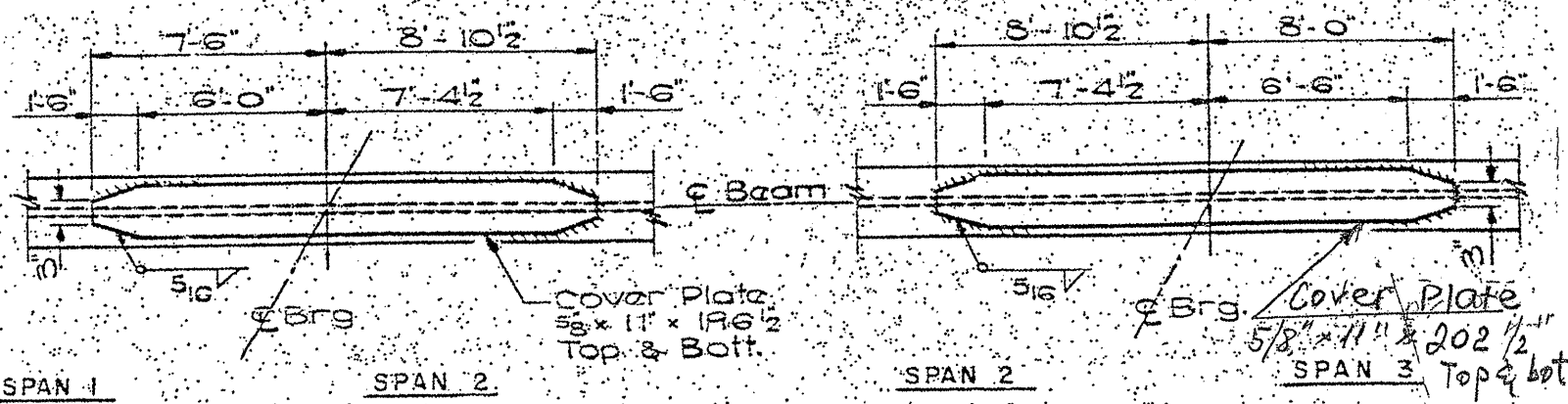


DETAIL OF SPLICE



DIAPHRAGM D1

80 Road



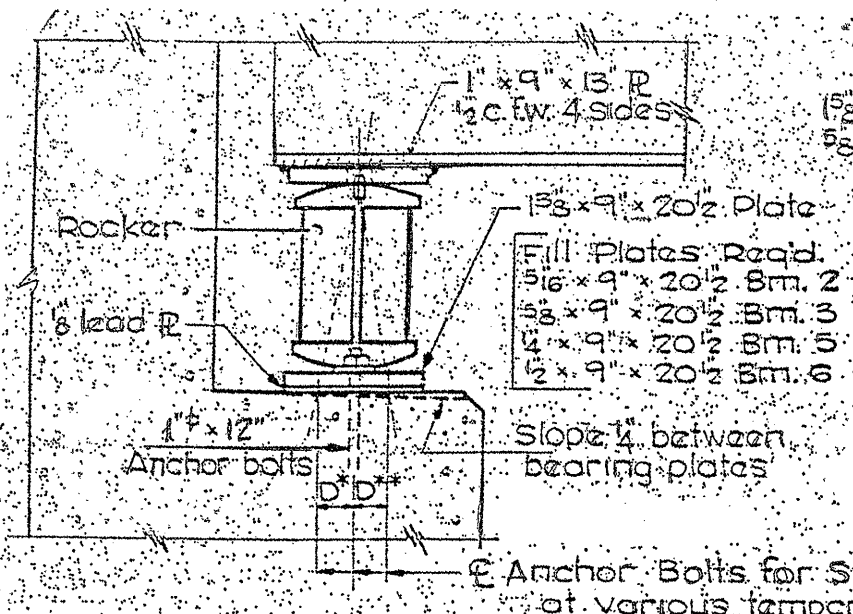
COVER PLATE DETAILS

FOR INFORMATION ONLY

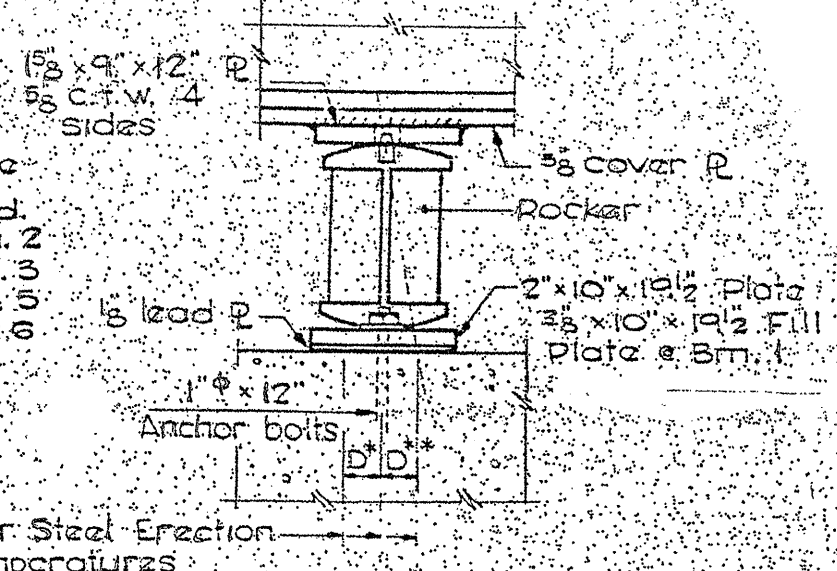
ILLINOIS DEPARTMENT OF  
TRANSPORTATION  
  
EXISTING BRIDGE PLAN  
LOCATION 2: SN 022-0143

ROUTE	SECTION	COUNTY	TOTAL SHEETS	SHEET NUMBER
FAP 338 & 349	2010-022 BP	DUPAGE & KENDALL	25	15

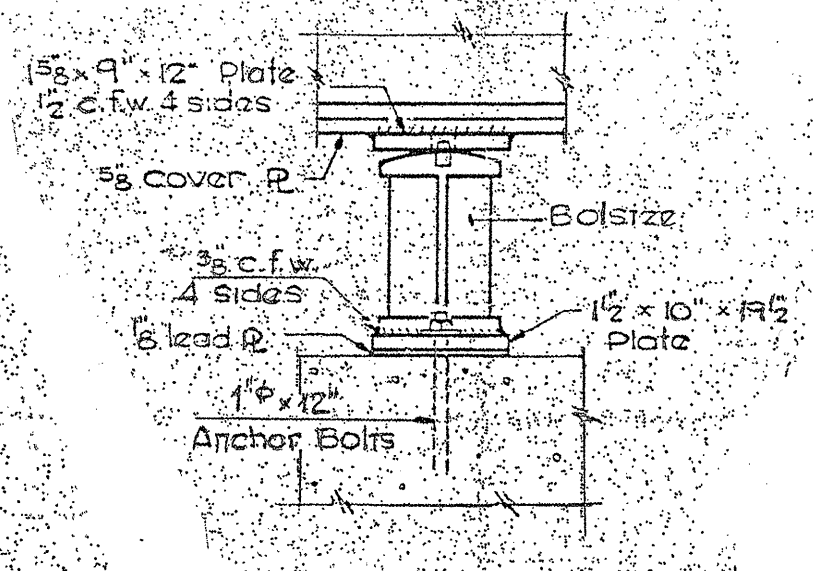
CONTRACT NO. 60K49



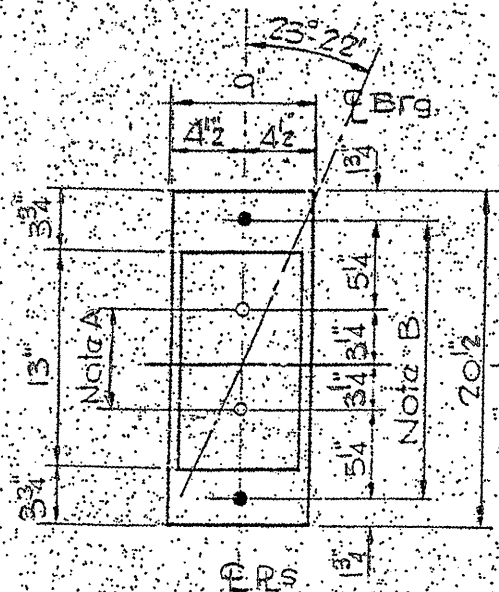
SECTION AT ABUTMENTS



PIER 2

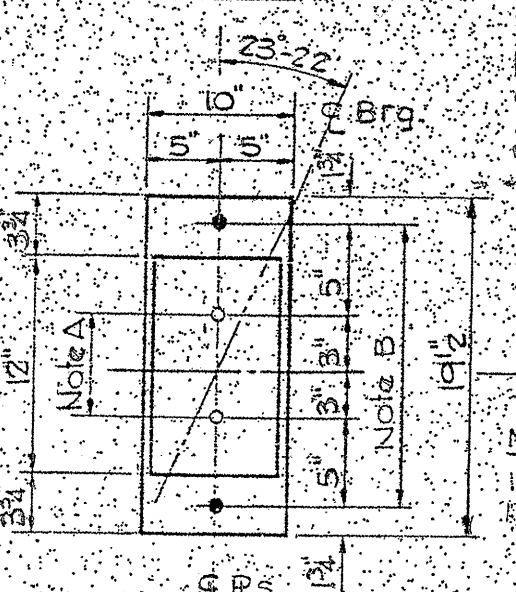


PIER 1



PLAN

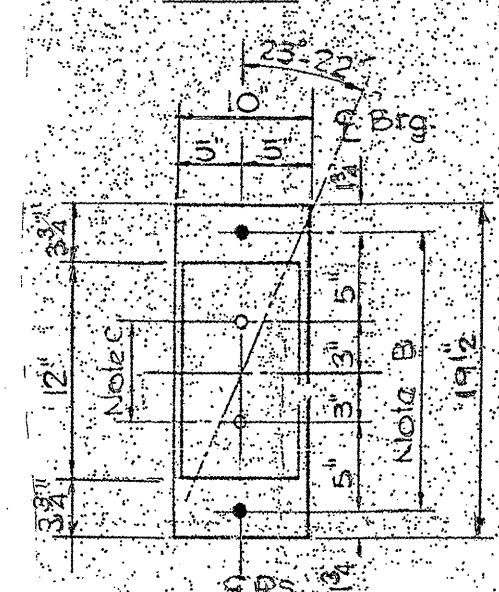
NOTE A:  
 1/8\"/>



PLAN

NOTE B:  
 1/2\"/>

NOTE C:  
 1/8\"/>



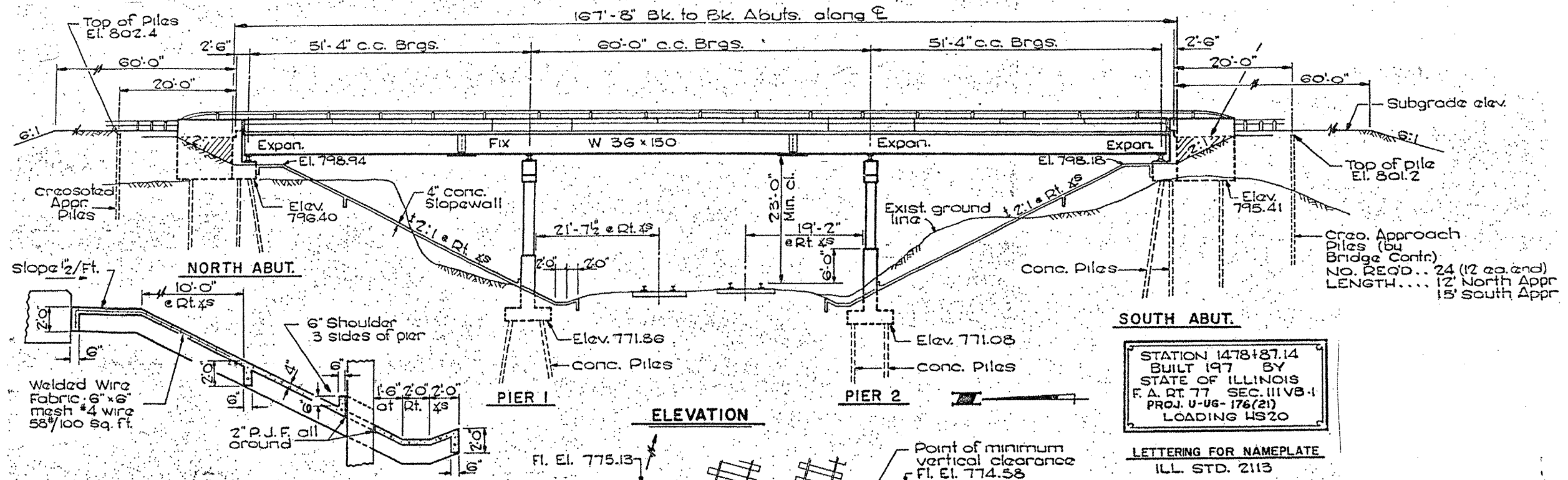
PLAN

FOR INFORMATION ONLY

ILLINOIS DEPARTMENT OF  
 TRANSPORTATION  
 EXISTING BRIDGE PLAN  
 LOCATION 2: SN 022-0143

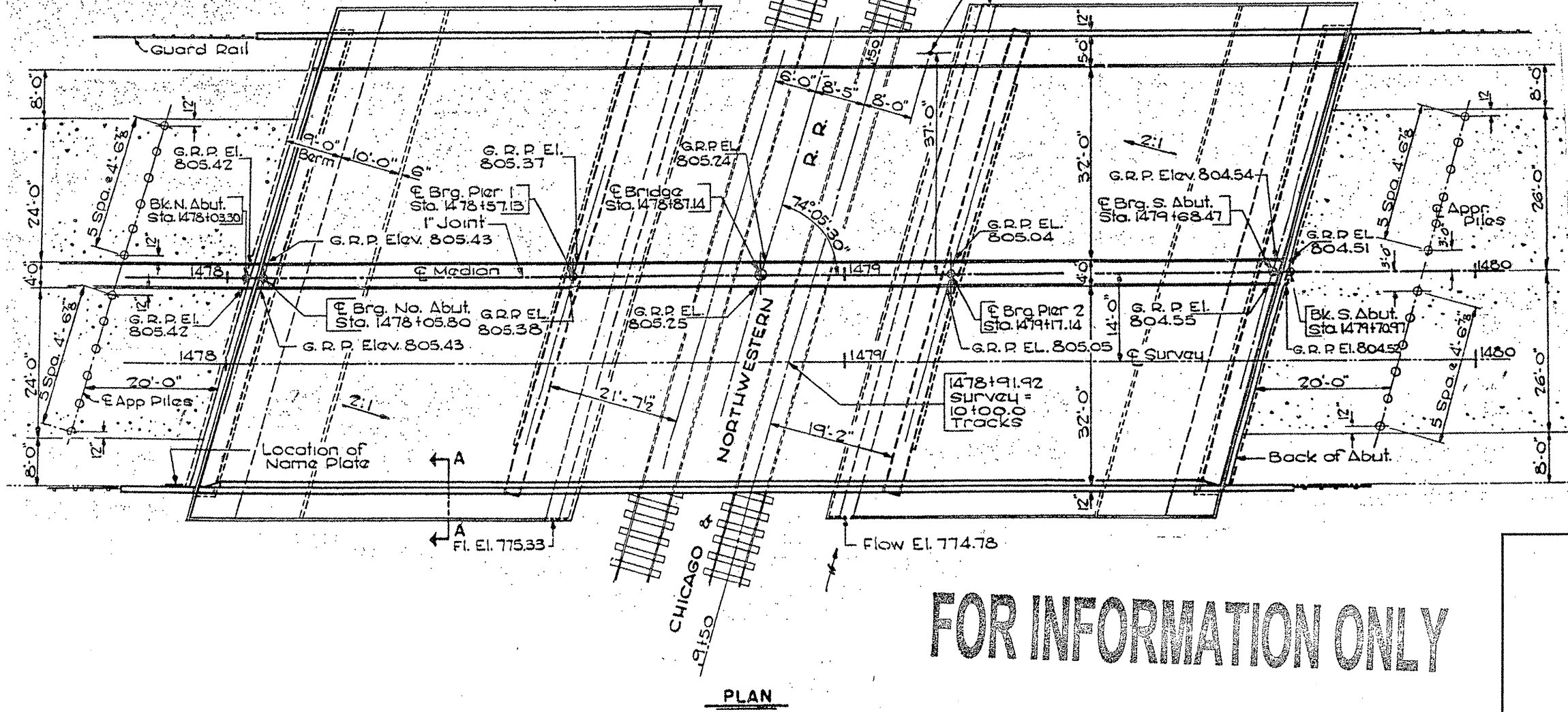
ROUTE	SECTION	COUNTY	TOTAL SHEETS	SHEET NUMBER
FAP 338 & 349	2010-022 BP	DUPAGE & KENDALL	25	16

CONTRACT NO. 60K49



STATION 1478+87.14  
 BUILT 197 BY  
 STATE OF ILLINOIS  
 F. A. RT. 77 SEC. 111VB-1  
 PROJ. U-UG-176(21)  
 LOADING HS20

LETTERING FOR NAMEPLATE  
 ILL. STD. 2113



PLAN

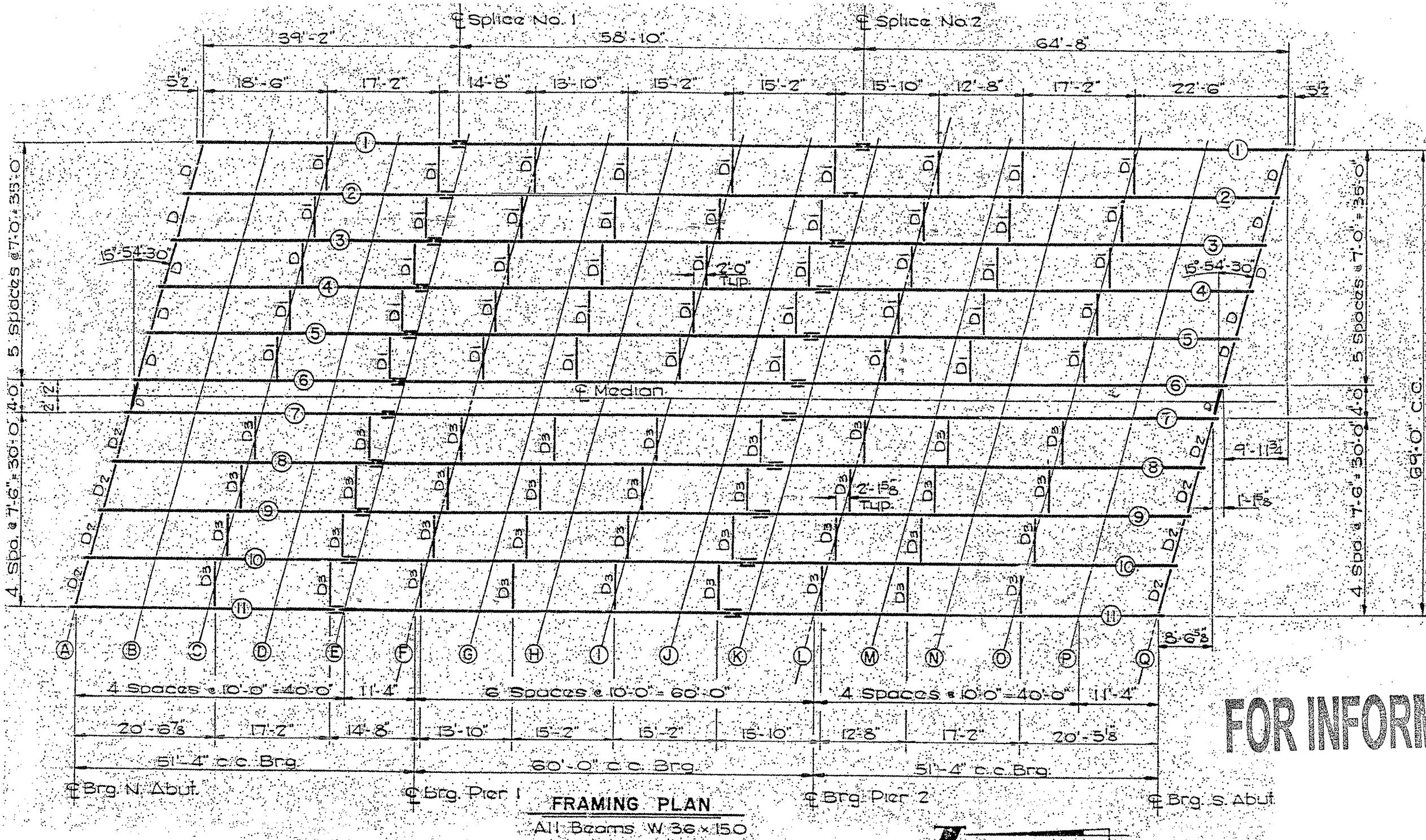
FOR INFORMATION ONLY

ILLINOIS DEPARTMENT OF  
 TRANSPORTATION  
 EXISTING BRIDGE PLAN  
 LOCATION 3: SN 022-0144



ROUTE	SECTION	COUNTY	TOTAL SHEETS	SHEET NUMBER
FAP 338 & 349	2010-022 BP	DUPAGE & KENDALL	25	17

CONTRACT NO. 60K49



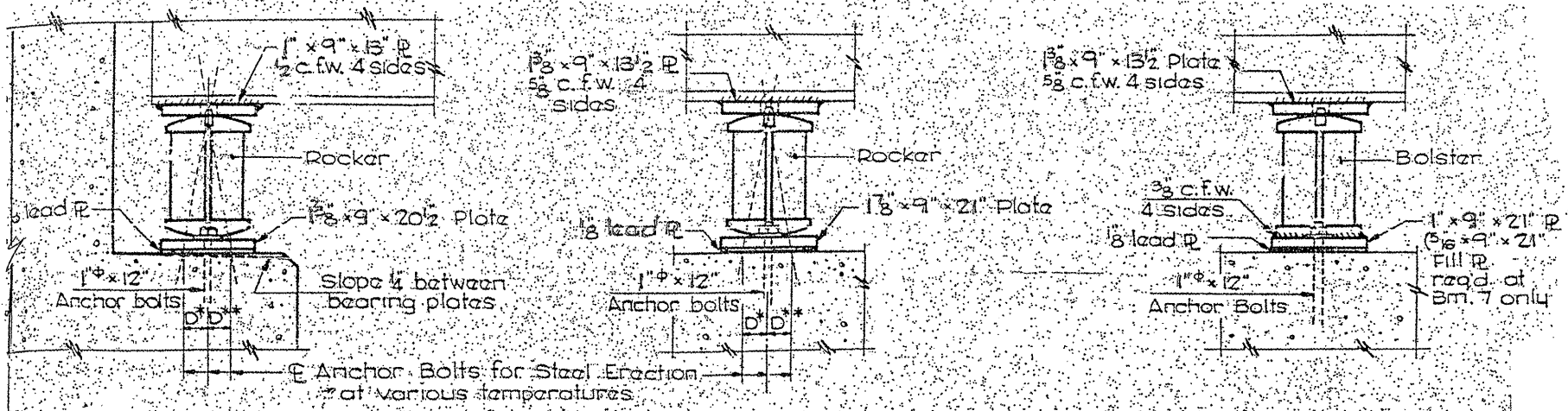
FOR INFORMATION ONLY

ILLINOIS DEPARTMENT OF  
TRANSPORTATION

EXISTING BRIDGE PLAN  
LOCATION 3: SN 022-0144

ROUTE	SECTION	COUNTY	TOTAL SHEETS	SHEET NUMBER
FAP 338 & 349	2010-022 BP	DUPAGE & KENDALL	25	18

CONTRACT NO. 60K49



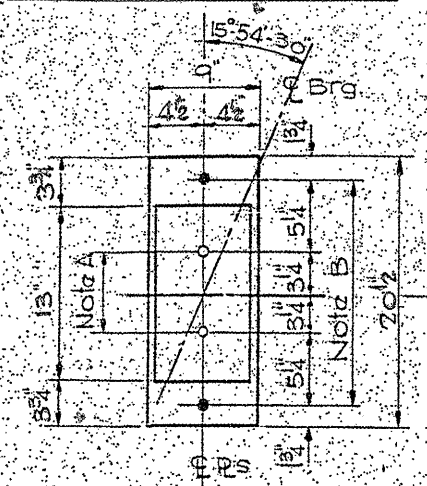
SECTION AT ABUTMENTS

PIER 2

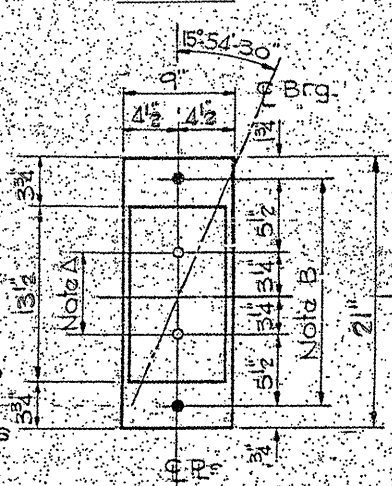
PIER 1

NOTE B:  
 1/2" Holes for 1" x 12" anchor bolts  
 2 1/2" x 2 1/2" x 5/16" P washer under nut

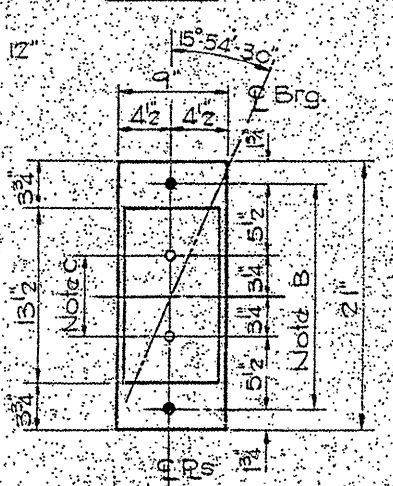
NOTE C:  
 3/8" Holes 1" Deep in top P only for 1/4" Pintles



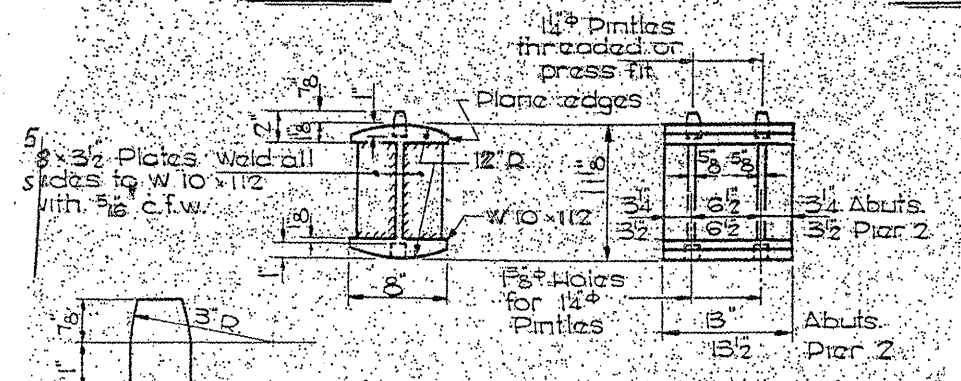
PLAN



PLAN

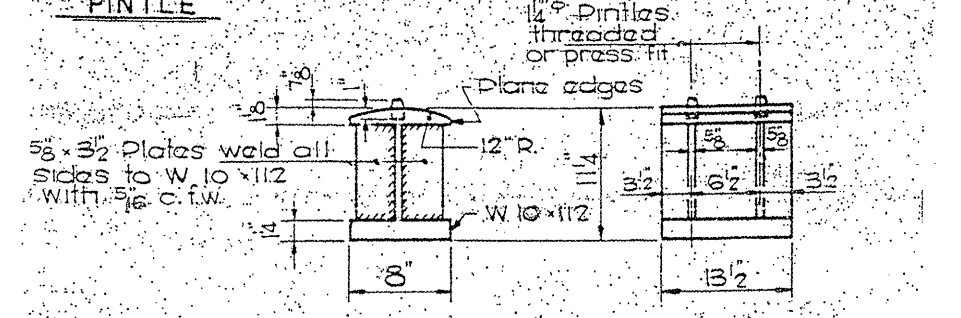


PLAN

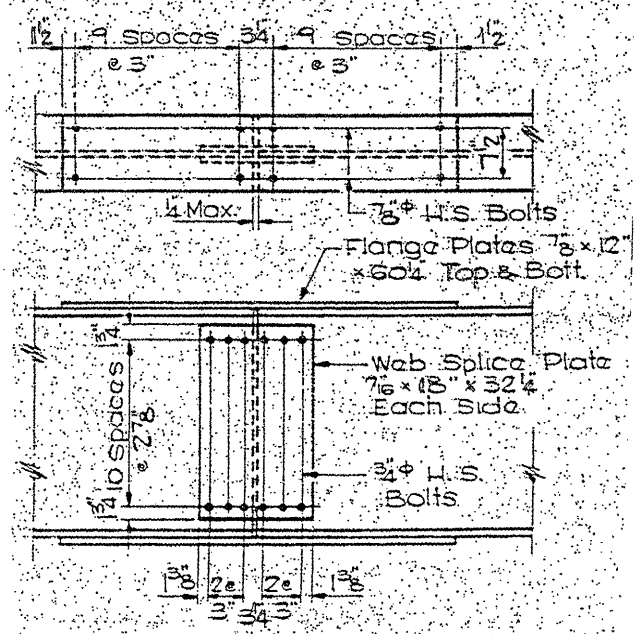


ROCKER

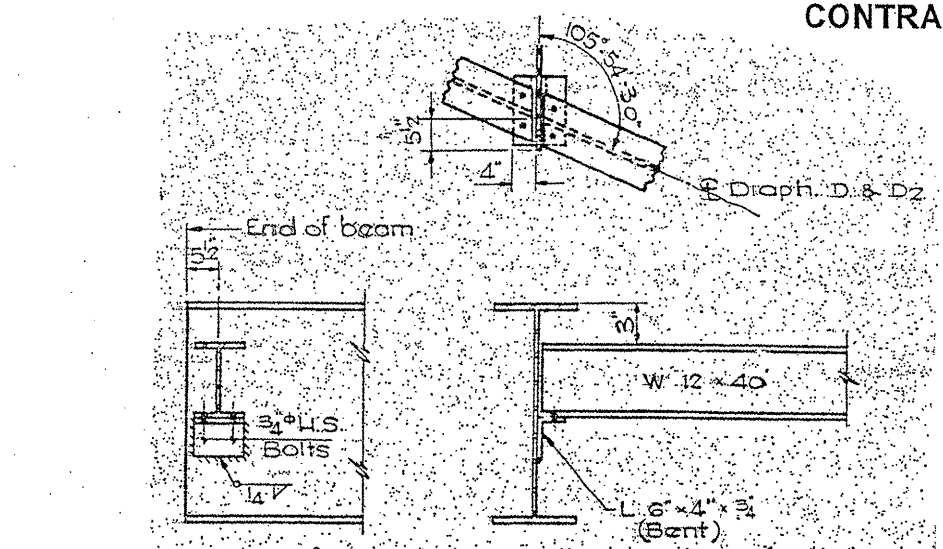
PINTLE



BOLSTER

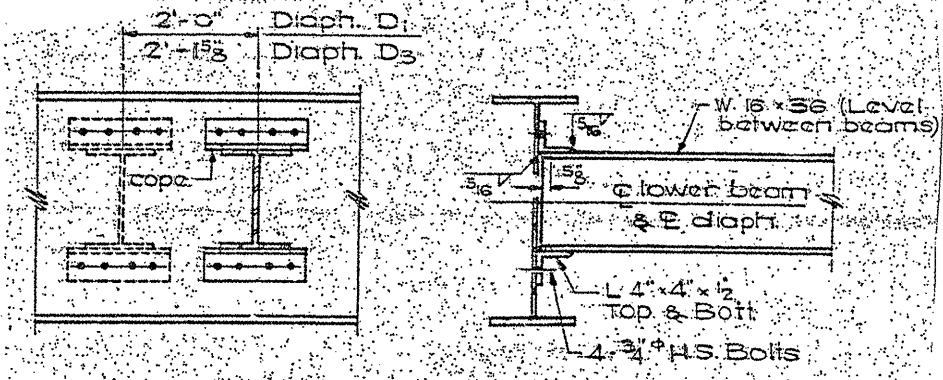


DETAIL OF SPLICE



DIAPHRAGMS D & D2

10 D Reqd. 8 D2 Reqd.



DIAPHRAGMS D1 & D3

45 D1 Reqd. 36 D3 Reqd.

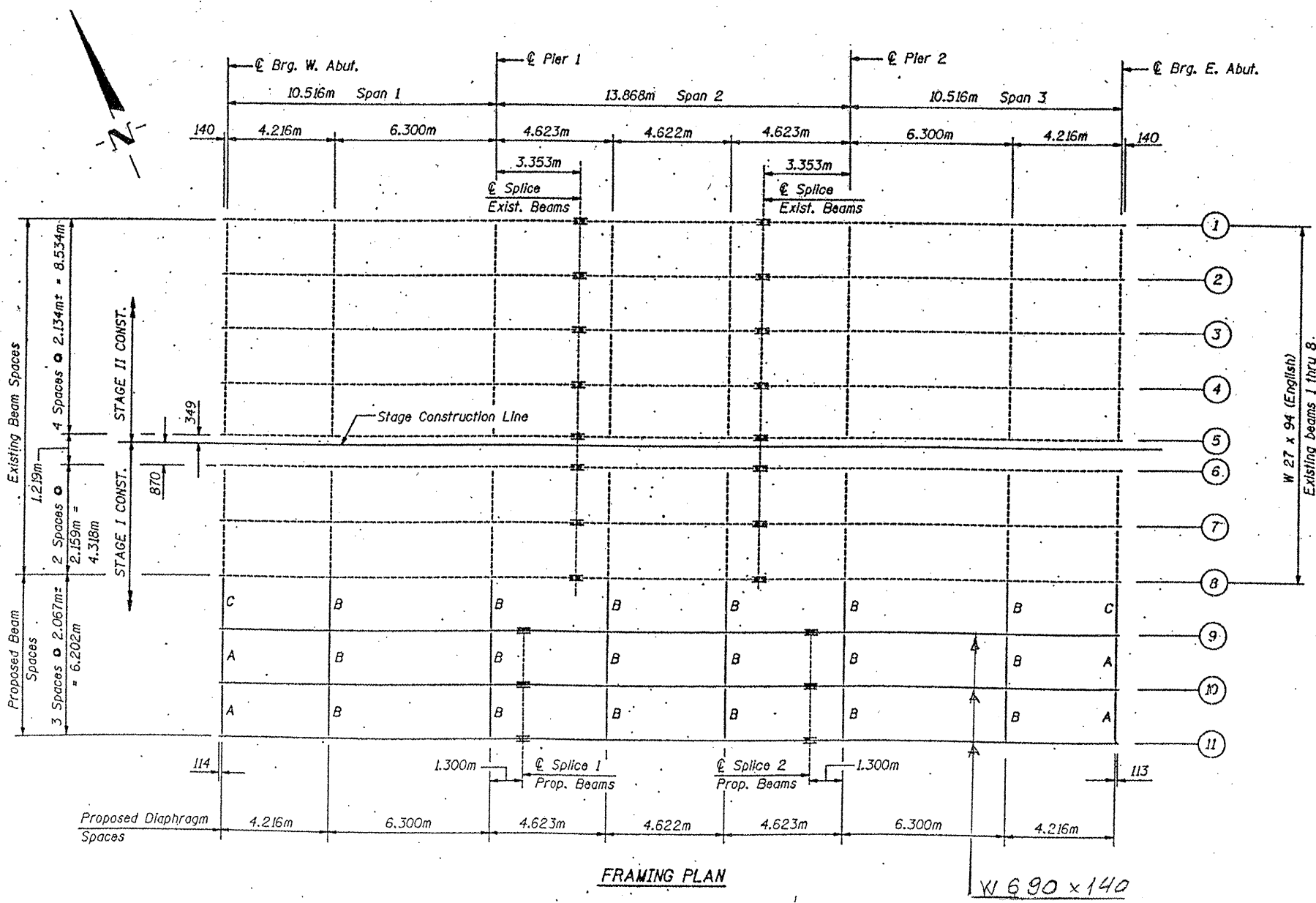
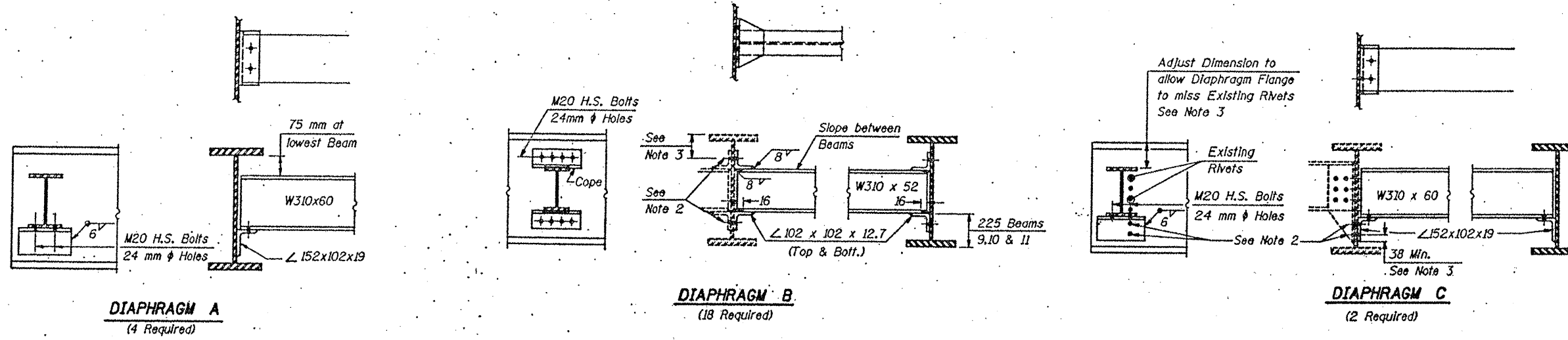
FOR INFORMATION ONLY

ILLINOIS DEPARTMENT OF TRANSPORTATION  
 EXISTING BRIDGE PLAN  
 LOCATION 3: SN 022-0144



ROUTE	SECTION	COUNTY	TOTAL SHEETS	SHEET NUMBER
FAP 338 & 349	2010-022 BP	DUPAGE & KENDALL	25	20

CONTRACT NO. 60K49



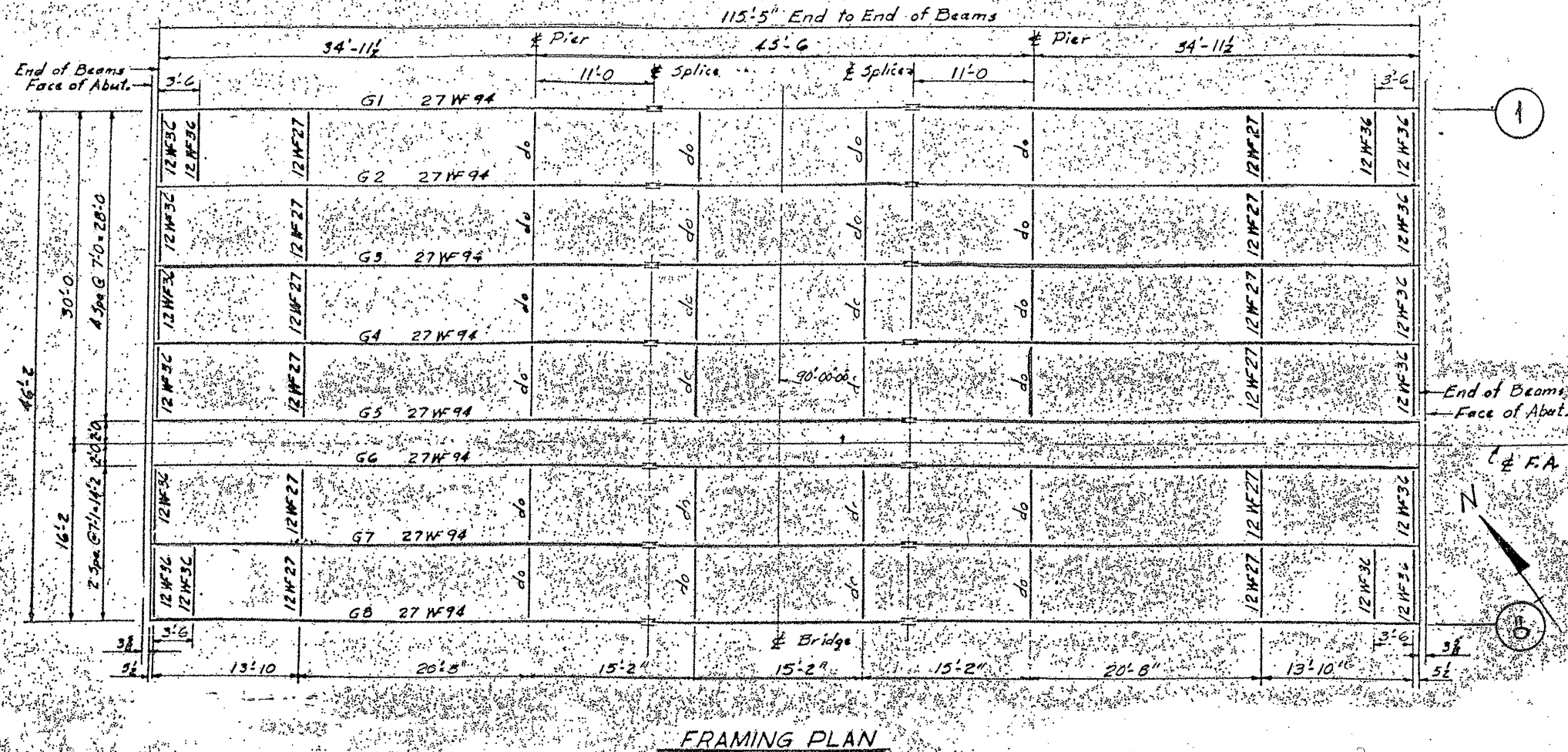
**FOR INFORMATION ONLY**

ILLINOIS DEPARTMENT OF  
TRANSPORTATION

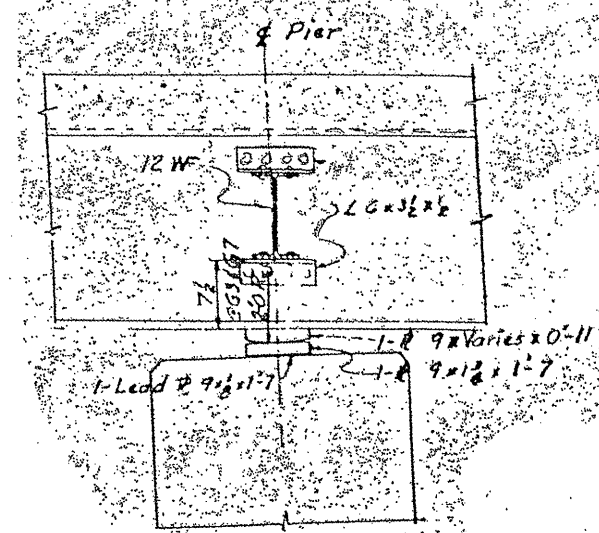
EXISTING BRIDGE PLAN  
LOCATION 4: SN 047-0030

ROUTE	SECTION	COUNTY	TOTAL SHEETS	SHEET NUMBER
FAP 338 & 349	2010-022 BP.	DUPAGE & KENDALL	25	21

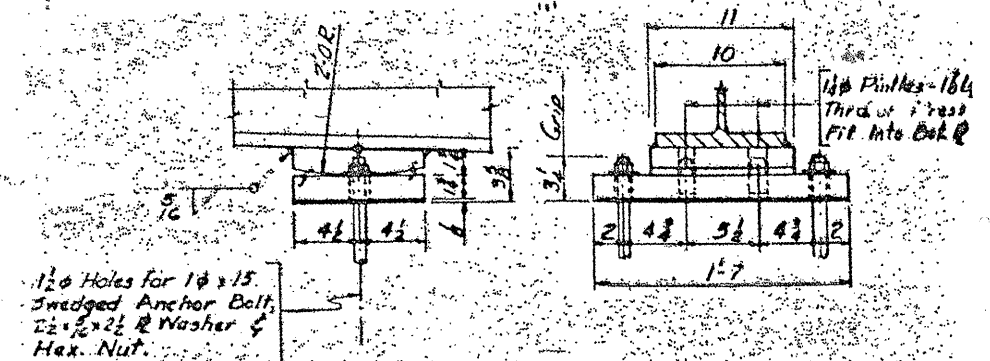
CONTRACT NO. 60K49



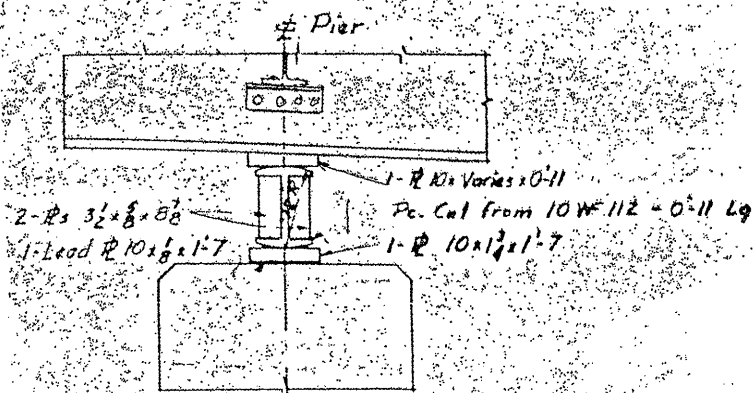
FRAMING PLAN



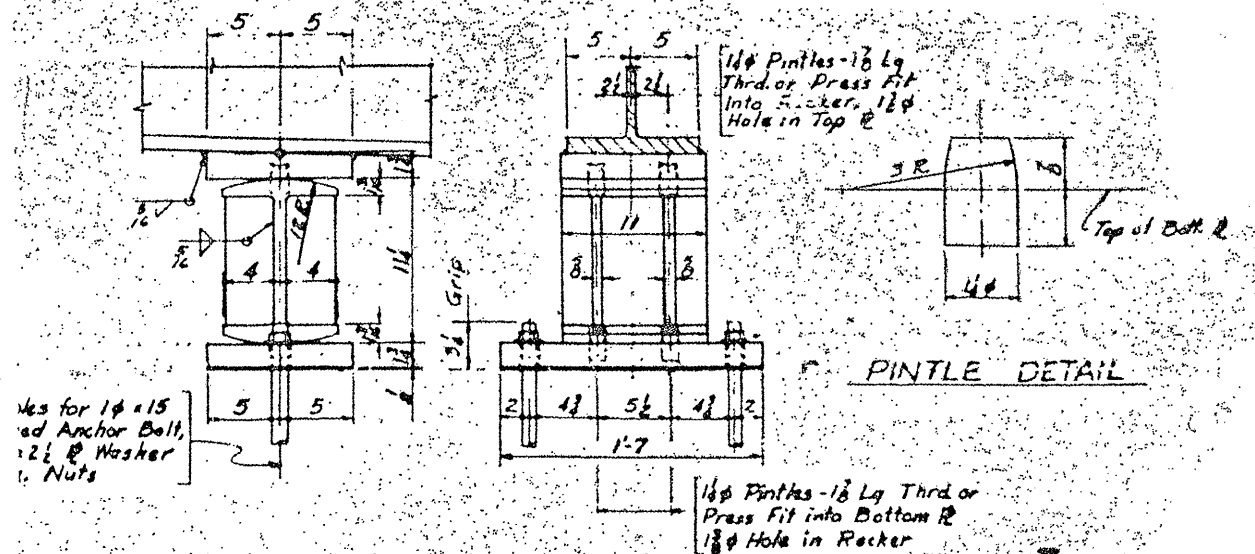
SECTION AT FIXED PIER



FIXED BEARING DETAIL AT PIER



SECTION AT EXPANSION PIER



EXPANSION BEARING DETAIL AT PIER

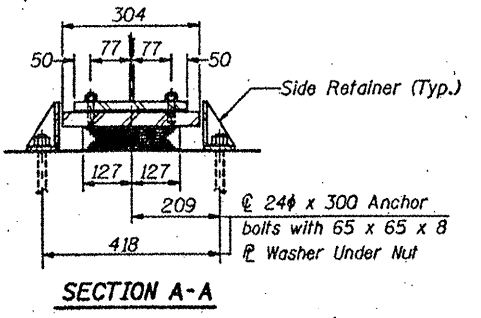
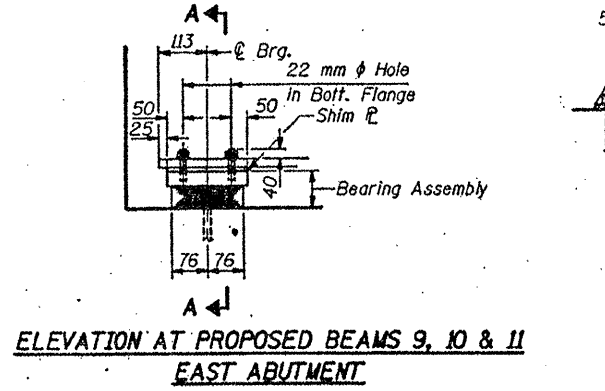
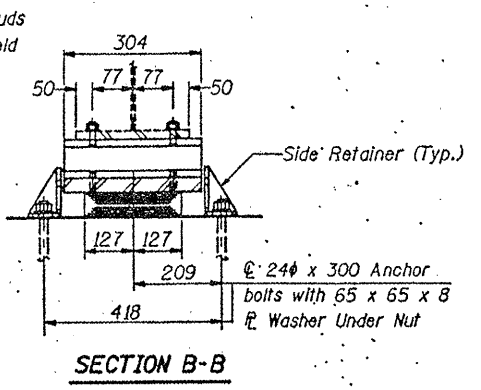
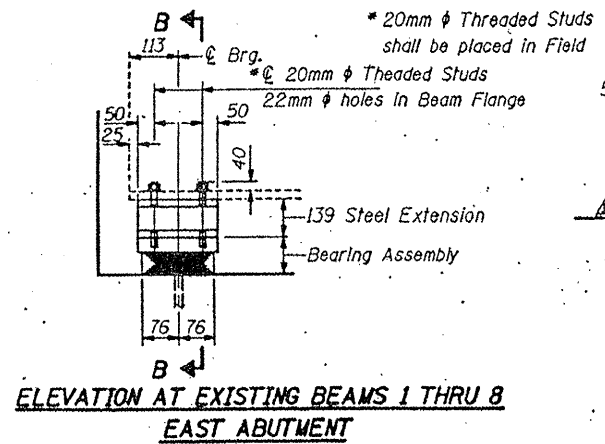
**FOR INFORMATION ONLY**

ILLINOIS DEPARTMENT OF  
TRANSPORTATION

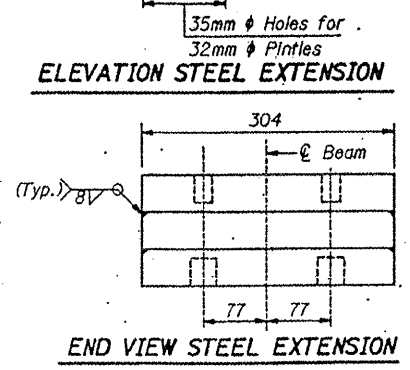
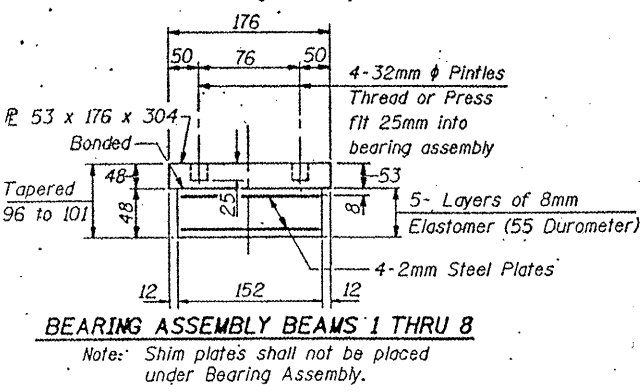
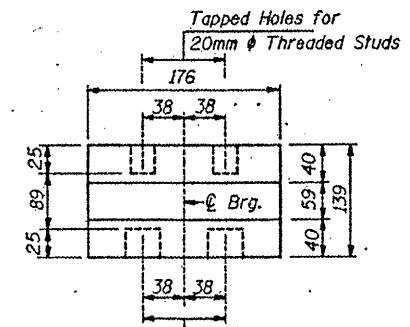
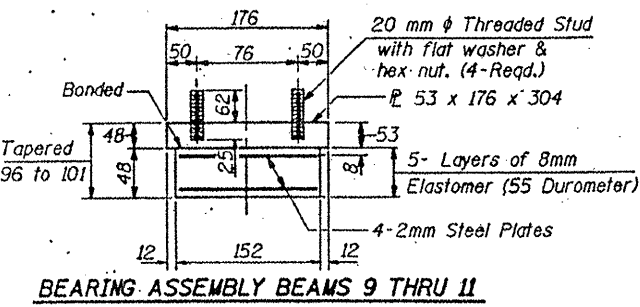
EXISTING BRIDGE PLAN  
LOCATION 4: SN 047-0030

ROUTE	SECTION	COUNTY	TOTAL SHEETS	SHEET NUMBER
FAP 338 & 349	2010-022 BP	DUPAGE & KENDALL	25	22

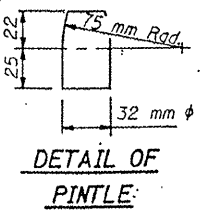
CONTRACT NO. 60K49



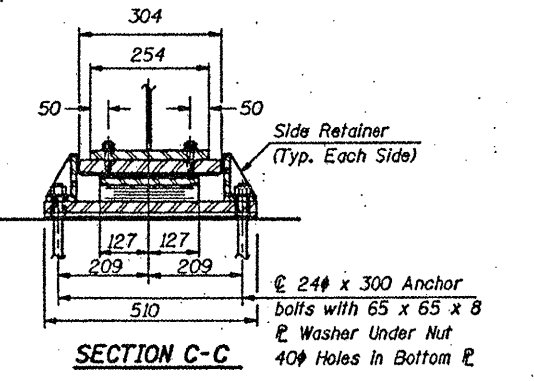
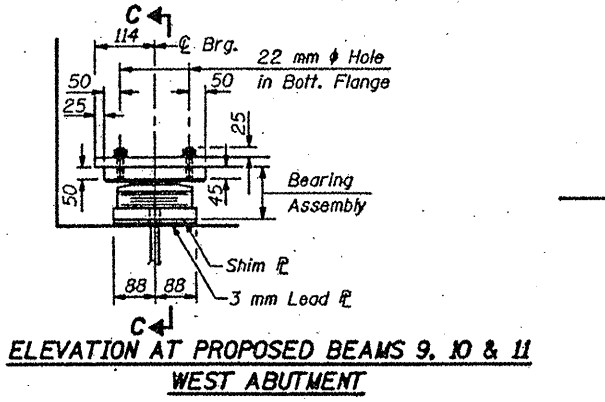
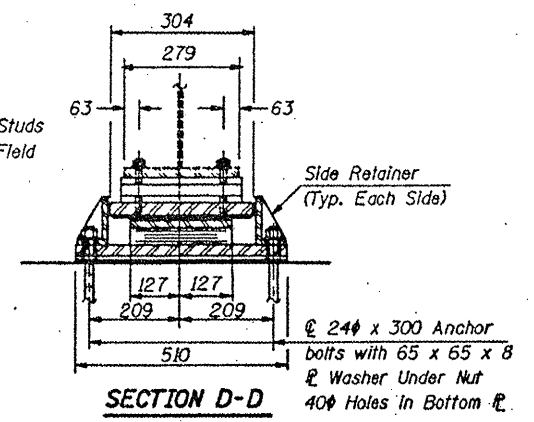
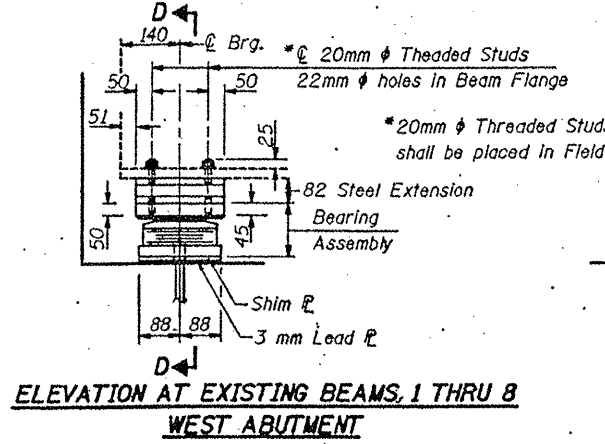
Notes:  
See Sheet 19 of 22 for Anchor Bolt Installation.  
All dimensions are in millimeters (mm) except as noted.  
See Sheet 12 of 22 for Side Retainers



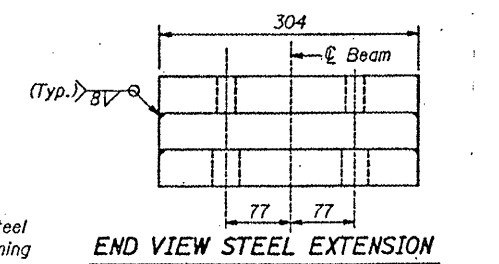
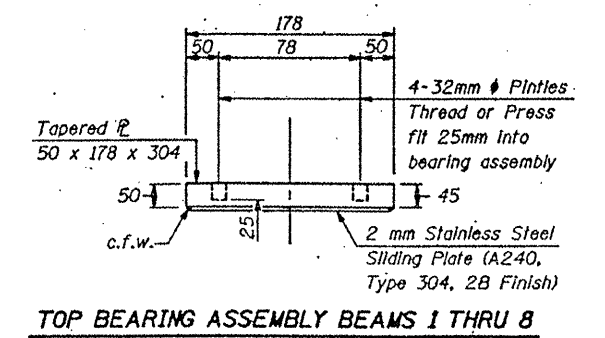
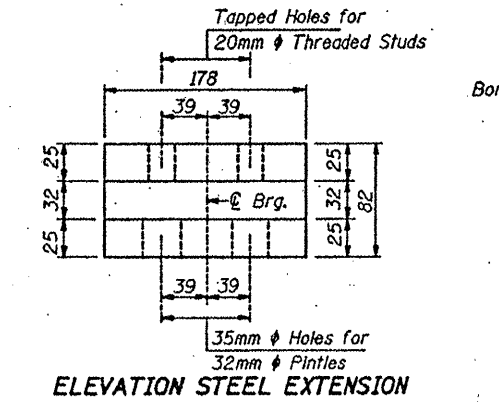
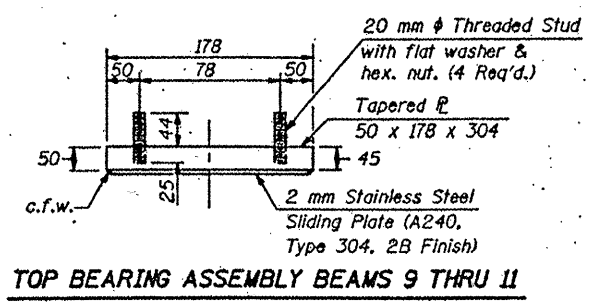
**NOTES**  
Diaphragm removal and replacement may be required to facilitate drilling holes. Cost is included with "Furnishing and Erecting Structural Steel".  
Prior to ordering any material, the Contractor shall verify all bearing height and shim thickness dimensions.



**TYPE I ELASTOMERIC EXP. BRG.**

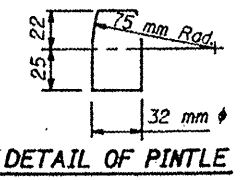
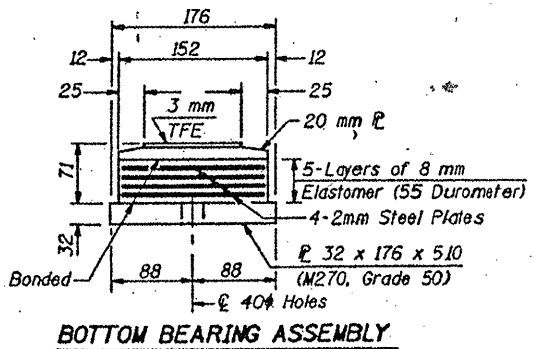
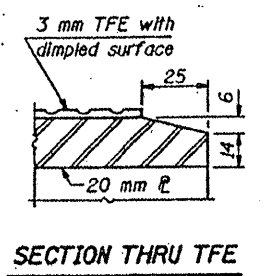
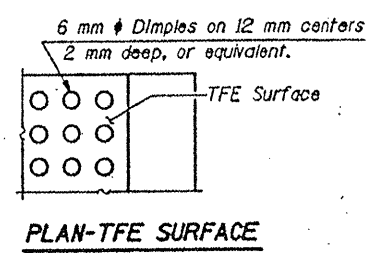


Notes:  
See Sheet 19 of 22 for Anchor Bolt Installation.  
All dimensions are in millimeters (mm) except as noted.  
See Sheet 12 of 22 for Side Retainers



Note: The 3 mm TFE sheet shall be bonded directly to the top steel plate with a two-component, medium viscosity epoxy resin, conforming to the requirements of the Federal Specification MMM-A-134, Type I. The bond agent shall be applied on the full area of the contact surfaces.  
Bonding of 3 mm TFE sheet during vulcanizing process will be permitted provided the process and method of adjusting assembly height is approved by the Engineer.

**TYPE II TFE ELASTOMERIC EXPANSION BEARING**

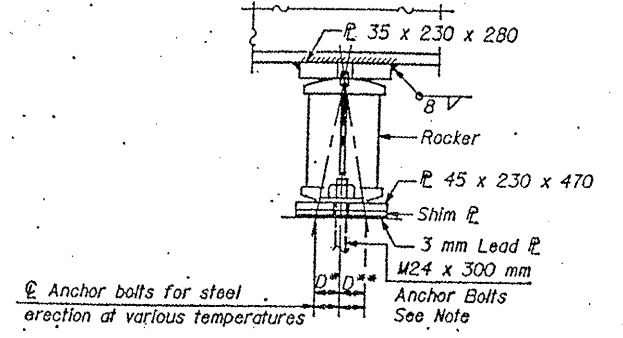


**FOR INFORMATION ONLY**

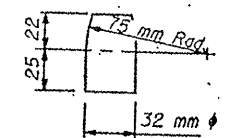
**ILLINOIS DEPARTMENT OF TRANSPORTATION**  
**EXISTING BRIDGE PLAN**  
**LOCATION 4: SN 047-0030**

ROUTE	SECTION	COUNTY	TOTAL SHEETS	SHEET NUMBER
FAP 338 & 349	2010-022 BP	DUPAGE & KENDALL	25	23

CONTRACT NO. 60K49

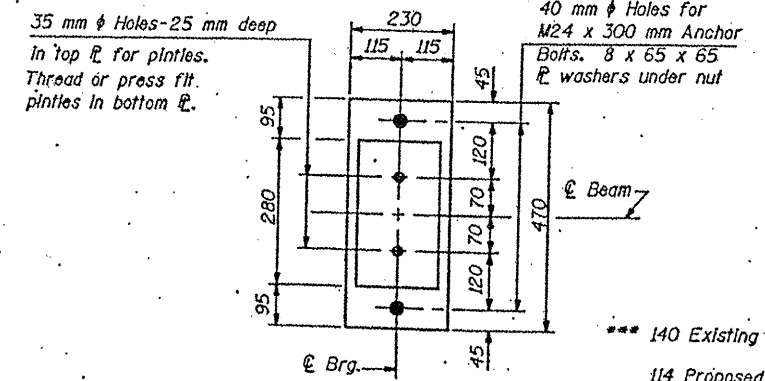


PIER 1



DETAIL OF PINTLE

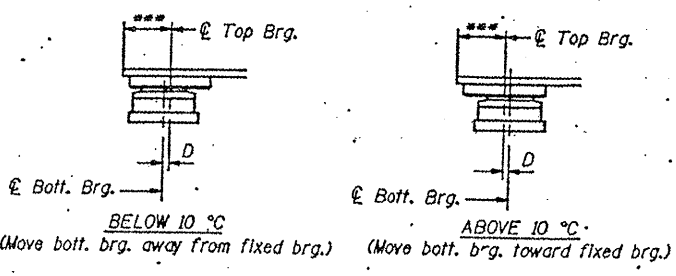
\*D=1 mm/10 m of exp. for every 8°C below the normal temp. of 10°C.  
 \*\*D=1 mm/10 m of exp. for every 8°C above the normal temp. of 10°C.



PLAN

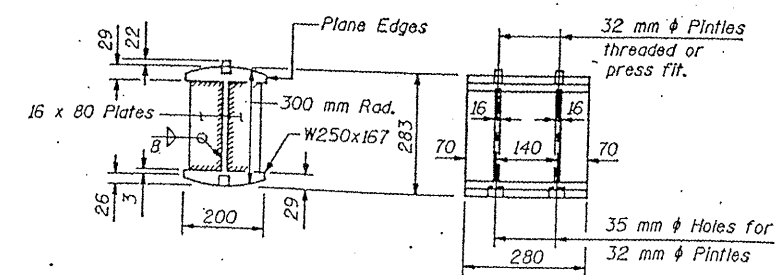
Note: See sheet #19 for anchor bolt installation. Anchor bolts at fixed bearings may be built into the masonry.  
 All dimensions are in millimeters (mm) except as noted.

140 Existing Beams 1 thru 8  
 114 Proposed Beams 9,10 & 11 W. Abutment  
 106 Proposed Beams 9,10 & 11 E. Abutment



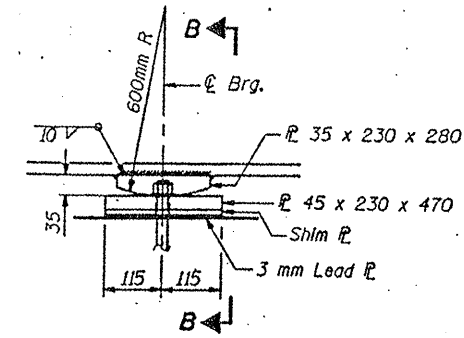
SETTING ANCHOR BOLTS AT EXP. BRG.

D = 1mm per each 10m of expansion for every 8°C temp. change from the normal temp. of 10°C.

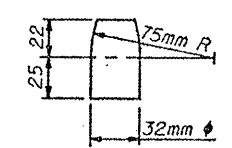


DETAIL OF ROCKER AT PIER 1

PIER 1 BEARING DETAILS  
 (3 Req'd.)



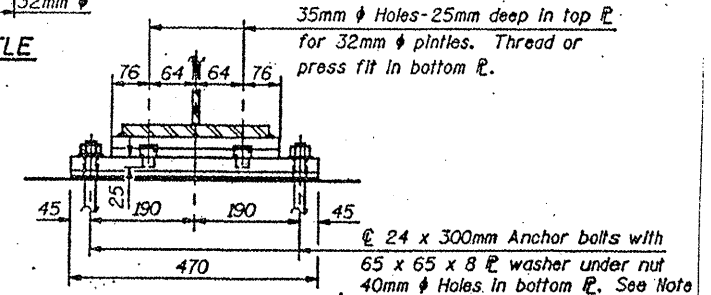
ELEVATION AT PIER



PINTLE

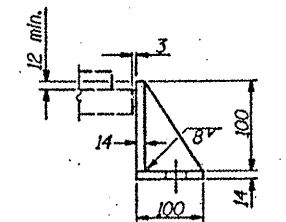
FIXED BEARING

PIER 2 BEARING DETAILS  
 (3 Req'd.)

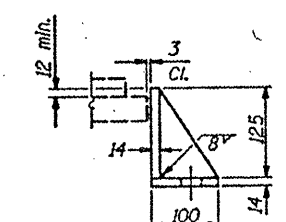


SECTION B-B

Note: See sheet #19 for anchor bolt installation. Anchor bolts at fixed bearings may be built into the masonry.  
 All dimensions are in millimeters (mm) except as noted.



SIDE RETAINER EAST ABUTMENT  
 22 Req'd.



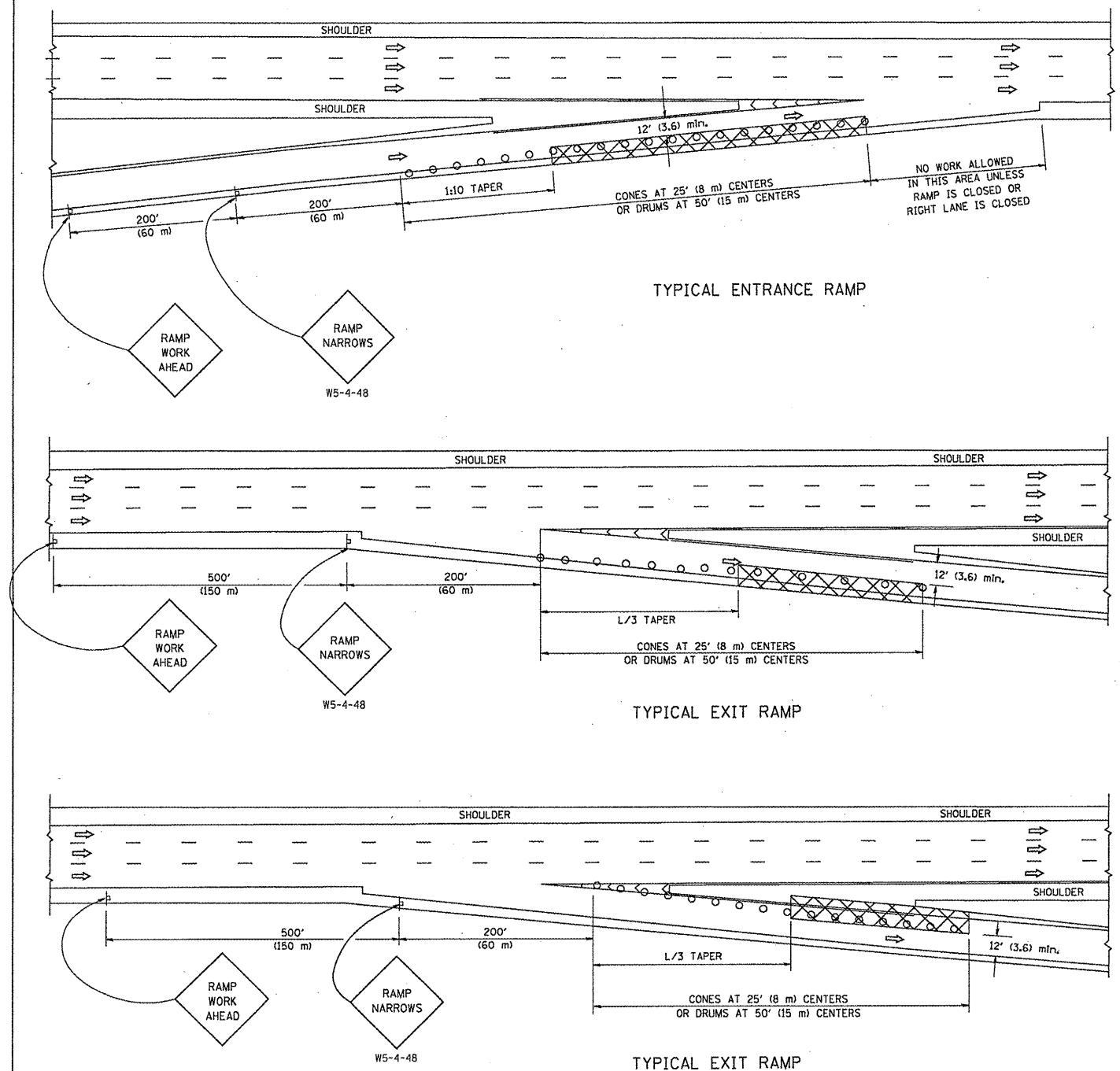
SIDE RETAINER WEST ABUTMENT  
 22 Req'd.

Equivalent rolled angle with stiffeners will be allowed in lieu of welded plates. Weight included with Structural Steel.

FOR INFORMATION ONLY

ILLINOIS DEPARTMENT OF TRANSPORTATION  
 EXISTING BRIDGE PLAN  
 LOCATION 4: SN 047-0030

PARTIAL RAMP CLOSURE DETAILS



TYPICAL ENTRANCE RAMP

TYPICAL EXIT RAMP

TYPICAL EXIT RAMP

SYMBOLS

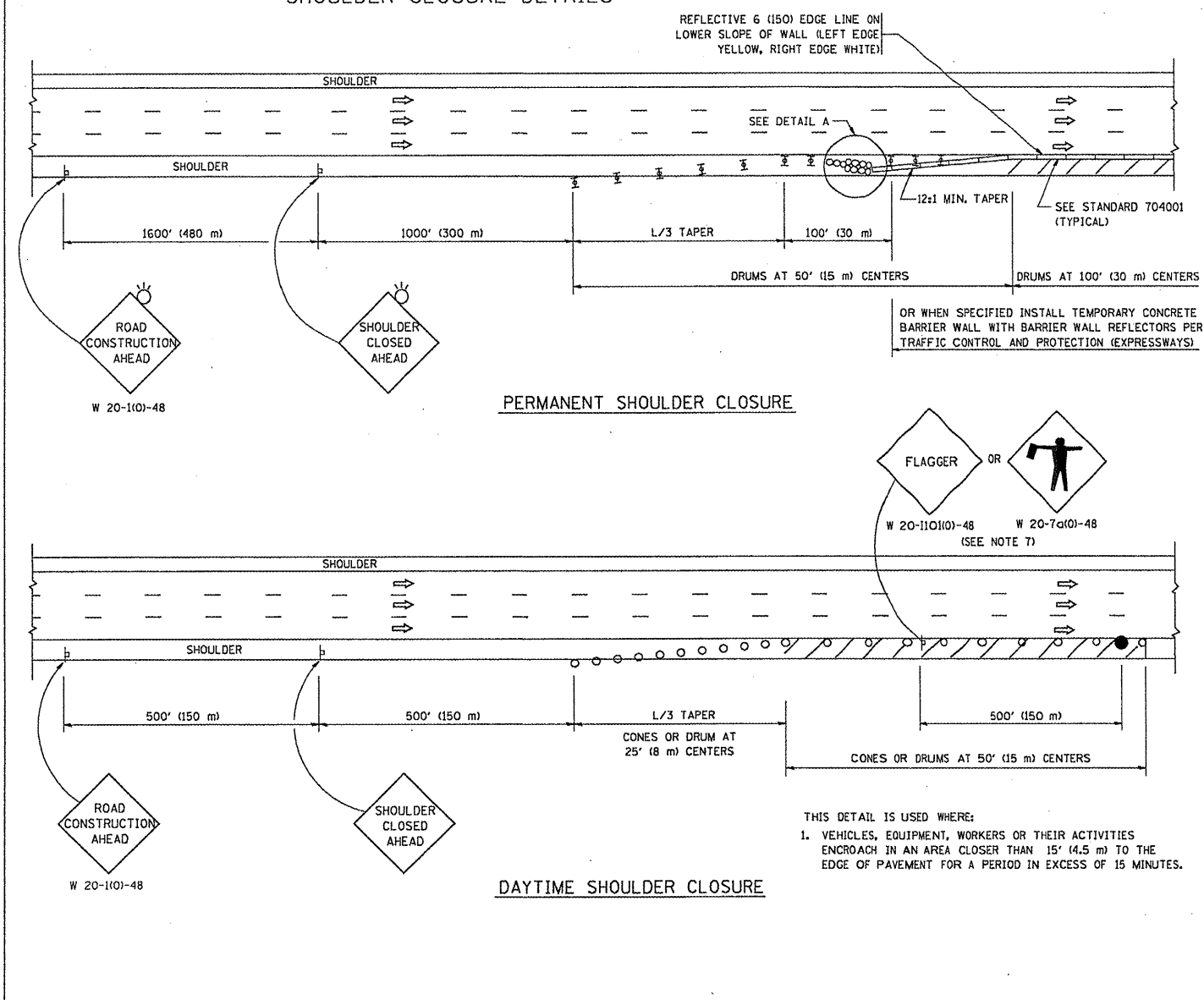
- ACTIVE WORK AREA
- SIGN ON PORTABLE OR PERMANENT SUPPORT
- FLAGGER WITH CONTROL SIGN
- TYPE II BARRICADE, DRUM OR VERTICAL BARRICADE WITH STEADY BURN MONO-DIRECTIONAL LIGHT
- CONE, DRUM OR BARRICADE

GENERAL NOTES

1. THE "L" DISTANCE EQUALS:
 

SPEED LIMIT	FORMULAS
45 mph (80 km/h)	METRIC ENGLISH
OR GREATER:	$L = 0.65(W)(S)$ $L = (W)(S)$
	W = WIDTH OF OFFSET IN FEET (METERS)
	S = NORMAL POSTED SPEED MPH (KM/H)
2. PLASTIC DRUMS WITH HIGH PERFORMANCE REFLECTIVE SHEETING AND STEADY BURNING LIGHTS ARE REQUIRED FOR ALL NIGHTTIME CLOSURES.
3. ALL SIGNS SHALL BE POST MOUNTED IF THE CLOSURE TIME EXCEEDS FOUR DAYS.
4. FLASHING LIGHTS SHALL BE USED DURING THE HOURS OF DARKNESS AND SHALL BE INSTALLED ABOVE THE FIRST TWO SETS OF SIGNS.

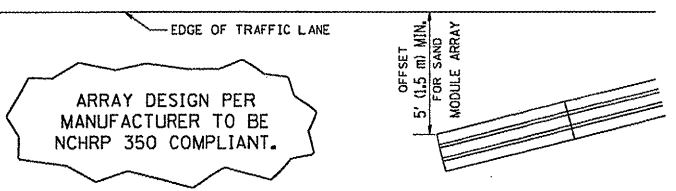
SHOULDER CLOSURE DETAILS



PERMANENT SHOULDER CLOSURE

DAYTIME SHOULDER CLOSURE

THIS DETAIL IS USED WHERE:  
 1. VEHICLES, EQUIPMENT, WORKERS OR THEIR ACTIVITIES ENCR OACH IN AN AREA CLOSER THAN 15' (4.5 m) TO THE EDGE OF PAVEMENT FOR A PERIOD IN EXCESS OF 15 MINUTES.



DETAIL "A"  
 IMPACT ATTENUATOR, TEMPORARY  
 (SEE NOTE 5)

ALL DIMENSIONS ARE IN INCHES (MILLIMETERS) UNLESS OTHERWISE SHOWN.

FILE NAME = W:\data\td\22x34\vol17.dgn

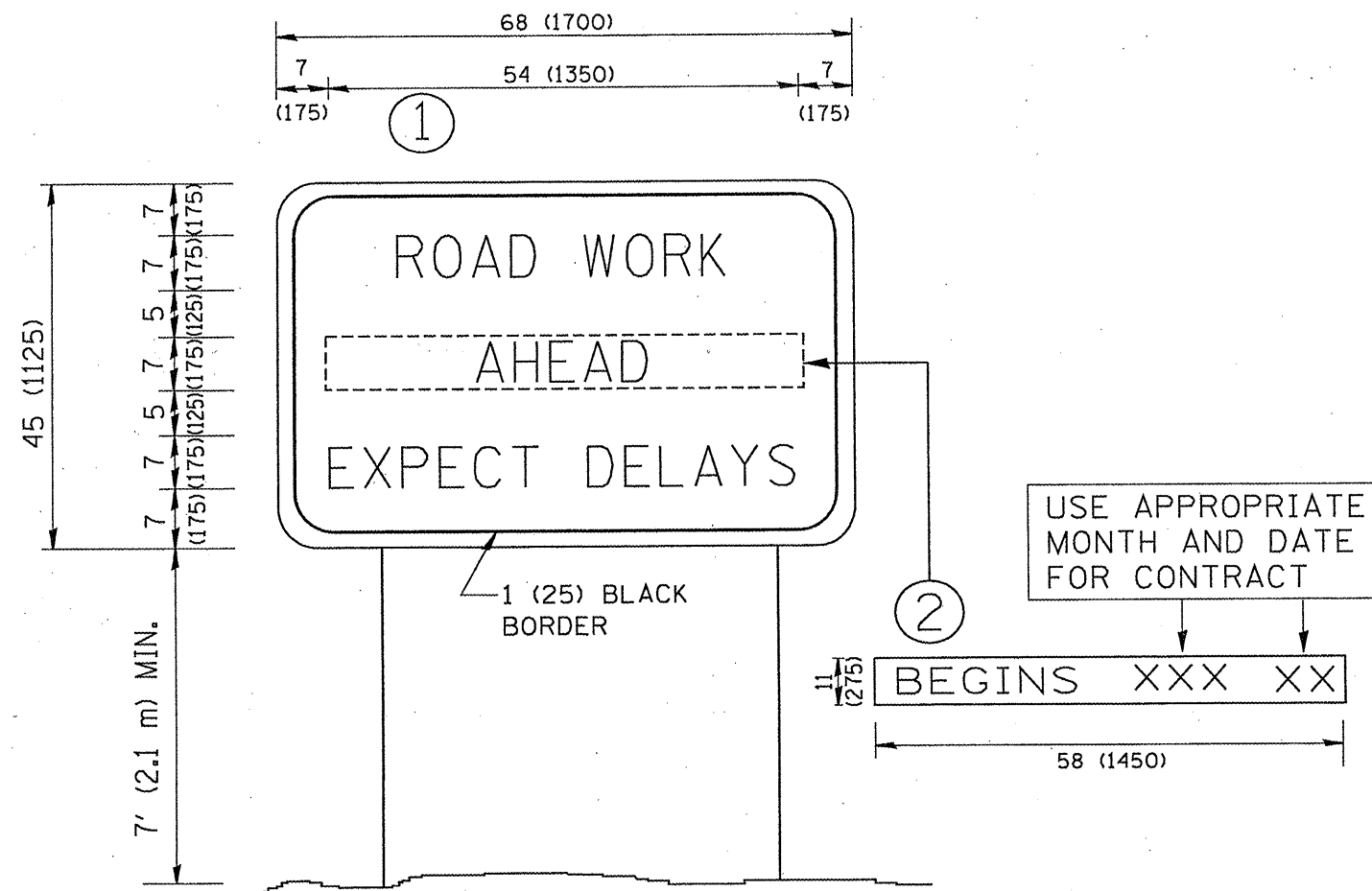
USER NAME = lsgso	DESIGNED -	REVISED - 04-03
PLOT SCALE = 50.0000' / IN.	DRAWN - D.W.S.	REVISED - J.A.F. 12-06
PLOT DATE = 1/26/2010	CHECKED -	REVISED - S.P.B. 01-07
	DATE - 11-96	REVISED - S.P.B. 12-09

STATE OF ILLINOIS  
 DEPARTMENT OF TRANSPORTATION

TRAFFIC CONTROL DETAILS FOR FREEWAY	
SHOULDER CLOSURES AND PARTIAL RAMP CLOSURES	
SCALE: NONE	SHEET NO. 1 OF 1 SHEETS
STA.	TO STA.

F.A.P. RTE.	SECTION	COUNTY	TOTAL SHEETS	SHEET NO.
VAR 2010-022 BP	VAR	VAR	25	24
TC-17		CONTRACT NO. 61K49		
FED. ROAD DIST. NO. 1 ILLINOIS FED. AID PROJECT				





**NOTES:**

1. USE BLACK LETTERING ON ORANGE BACKGROUND.
2. ERECT SIGNS IN ADVANCE OF THE LOCATION FOR THE "ROAD CONSTRUCTION AHEAD" SIGN AT LOCATIONS AS DIRECTED BY THE ENGINEER.
3. ERECT SIGN ① WITH INSTALLED PANEL ② ONE WEEK PRIOR TO THE START OF CONSTRUCTION.
4. REMOVE PANEL ② SOON AFTER THE START OF CONSTRUCTION.
5. SEE SPECIAL PROVISION FOR "TEMPORARY INFORMATION SIGNING" FOR ADDITIONAL INFORMATION.
6. ONE SIGN ASSEMBLY EQUALS 25.70 SQ. FT. (2.3 SQ. M.)
7. SHALL BE PAID FOR AS TEMPORARY INFORMATION SIGNING.

ALL DIMENSIONS ARE IN INCHES (MILLIMETERS) UNLESS OTHERWISE SHOWN.

FILE NAME = M:\diststd\22x34\te22.dgn	USER NAME = geglianobt	DESIGNED -	REVISED - R. MIRS 09-15-97
		DRAWN -	REVISED - R. MIRS 12-11-97
	PLOT SCALE = 50.000 ' / IN.	CHECKED -	REVISED - T. RAMMACHER 02-02-99
	PLOT DATE = 1/4/2008	DATE -	REVISED - C. JUCIUS 01-31-07

**STATE OF ILLINOIS  
DEPARTMENT OF TRANSPORTATION**

SCALE: NONE		SHEET NO. 1 OF 1 SHEETS		STA.	TO STA.
F.A.F. RTE.	SECTION	COUNTY	TOTAL SHEETS	SHEET NO.	
Var 2010-070-BP	TC-22	Var	25	25	
FED. ROAD DIST. NO. 1 ILLINOIS FED. AID PROJECT			CONTRACT NO. 60K49		