

ROUTE	SECTION	COUNTY	TOTAL SHEETS	SHEET NUMBER
VARIOUS	2010-027-I	COOK	19	2

CONTRACT NO.: 60K63

INDEX OF SHEETS

1. TITLE SHEET
2. INDEX OF SHEETS, STATE STANDARDS, GENERAL NOTES AND MIXTURE REQUIREMENTS
3. SUMMARY OF QUANTITIES
- 4.-14. SCHEDULE OF QUANTITIES
15. DETAIL: CONCRETE DRIVEWAY
16. CURB AND GUTTER REMOVAL AND REPLACEMENT
17. CITY OF CHICAGO DETAILS FOR P.C. CONCRETE DRIVEWAY, ALLEY RETURN AND SIDEWALK
18. TRAFFIC CONTROL AND PROTECTION FOR SIDEROADS, INTERSECTIONS AND DRIVEWAYS
19. ARTERIAL ROAD INFORMATION SIGN

STATE STANDARDS

- 424001-05 SIDEWALK RAMPS ACCESSIBLE TO THE DISABLED
- 606001-04 CONCRETE CURB AND COMBINATION CONCRETE CURB AND GUTTER
- 701301-03 LANE CLOSURE, 2L, 2W, SHORT TIME OPERATIONS
- 701501-05 URBAN LANE CLOSURE, 2L, 2W UNDIVIDED
- 701801-04 LANE CLOSURE, MULTILANE, 1W OR 2W CROSSWALK OR SIDEWALK CLOSURE
- 701901-01 TRAFFIC CONTROL DEVICES

MIXTURE REQUIREMENTS

MIXTURE TYPE	AIR VOIDS @ Ndes
HOT-MIX ASPHALT SURFACE COURSE, MIX "D", N50	4% @ 50 GYR.

- THE UNIT WEIGHT USED TO CALCULATE HOT-MIX ASPHALT SURFACE MIXTURES IS 112 LBS/SQ YD/IN.
- THE AC TYPE FOR POLYMERIZED HMA MIXES SHALL BE SBS/SBR PG 70-22 AND FOR NON-POLYMERIZED HMA THE AC TYPE SHALL BE PG 64-22 UNLESS MODIFIED BY DISTRICT ON SPECIAL PROVISIONS. FOR "PERCENT OF RAP" SEE DISTRICT ONE SPECIAL PROVISIONS.

GENERAL NOTES

BEFORE STARTING ANY EXCAVATION, THE CONTRACTOR SHALL CALL "C.U.A.N." (CHICAGO UTILITY ALERT NETWORK) AT (312)744-7000 FOR FIELD LOCATIONS OF BURIED ELECTRIC, TELEPHONE AND GAS UTILITIES. (48 HOUR NOTIFICATION IS REQUIRED).

THE CONTRACTOR WILL NOT BE ALLOWED TO SET UP A YARD OR FIELD OFFICE ON STATE PROPERTY WITHOUT WRITTEN PERMISSION FROM THE DEPARTMENT.

WHEN CONSTRUCTING SIDEWALK RAMPS FOR THE HANDICAPPED (STATE STANDARD 424001), USE TYPE B RAMPS UNLESS OTHERWISE SPECIFIED.

THESE PLANS HAVE BEEN PREPARED FROM NOTES RECEIVED FROM BUREAU OF MAINTENANCE.

THE COST OF HOT-MIX ASPHALT REMOVAL IN THE EXISTING GUTTER FLAG WILL BE INCLUDED IN THE UNIT PRICE BID FOR COMBINATION CURB AND GUTTER REMOVAL AND REPLACEMENT.

ALL DAMAGE TO EXISTING PAVEMENT MARKINGS SHALL BE REPLACED AT THE CONTRACTOR'S EXPENSE.

THE ENGINEER SHALL OBTAIN APPROVAL FROM THE DISTRICT ONE BUREAU CHIEF OF MAINTENANCE FOR ANY PROPOSED REVISIONS IN THE SCHEDULED CURB AND GUTTER REPAIR LOCATIONS.

DO NOT SCALE PLANS FOR CONSTRUCTION DIMENSIONS.

IT SHALL BE THE CONTRACTOR'S RESPONSIBILITY TO VERIFY ALL DIMENSIONS AND CONDITIONS EXISTING IN THE FIELD PRIOR TO CONSTRUCTION AND ORDERING OF MATERIALS.

PAINT CURB YELLOW AT FIRE HYDRANTS ACCORDING TO THE APPLICABLE REQUIREMENTS OF SECTION 780 OF THE STANDARD SPECIFICATIONS FOR PAINTED PAVEMENT MARKINGS, EXCEPT THE COST SHALL NOT BE PAID FOR SEPERATELY BUT SHALL BE INCLUDED IN "COMB. CONC. C&G, REMOVAL AND REPLACEMENT."

ADJACENT PARALLEL SIDEWALK, REMOVE AND REPLACE ENTIRE WIDTH OF SIDEWALK JOINT TO JOINT

THE CONTRACTOR SHALL CONTACT THE DISTRICT ONE TRAFFIC CONTROL SUPERVISOR AT (847)705-4470 A MINIMUM OF 72 HOURS IN ADVANCE OF BEGINNING WORK.

ILLINOIS DEPARTMENT OF TRANSPORTATION

**INDEX OF SHEETS
STATE STANDARDS
GENERAL NOTES**

URBAN
100% STATE

ROUTE	SECTION	COUNTY	TOTAL SHEETS	SHEET NUMBER
VARIOUS	2010-027-1	COOK	19	3

CONTRACT NO.: 60K63

CONSTRUCTION CODE TYPE: SFTY - 1B		COOK CO.	
CODE NO.	ITEMS	UNITS	TOTAL QUANTITIES
40603335	HOT-MIX ASPHALT SURFACE COURSE, MIX "D", N50	TON	91
42001300	PROTECTIVE COAT	SQ YD	1230
42300400	PORTLAND CEMENT CONCRETE DRIVEWAY PAVEMENT, 8 INCH	SQ YD	51
42400200	PORTLAND CEMENT CONCRETE SIDEWALK 5 INCH	SQ FT	4087
44000200	DRIVEWAY PAVEMENT REMOVAL	SQ YD	51
44000600	SIDEWALK REMOVAL	SQ FT	4087
44001700	COMBINATION CONCRETE CURB AND GUTTER REMOVAL AND REPLACEMENT	FOOT	3259
67000400	ENGINEER'S FIELD OFFICE, TYPE A	CAL MO	4
67100100	MOBILIZATION	L SUM	1
70102620	TRAFFIC CONTROL AND PROTECTION, STANDARD 701501	L SUM	1
70102640	TRAFFIC CONTROL AND PROTECTION, STANDARD 701801	L SUM	1
X0322256	TEMPORARY INFORMATION SIGNING	SQ FT	308.4
44000100	PAVEMENT REMOVAL	SQ YD	543
21101615	TOPSOIL FURNISH AND PLACE, 4"	SQ YD	179
25200110	SODDING, SALT TOLERANT	SQ YD	179

ILLINOIS DEPARTMENT OF TRANSPORTATION

SUMMARY OF QUANTITIES

Rev.

ROUTE	SECTION	COUNTY	TOTAL SHEETS	SHEET NUMBER
VARIOUS	2010-027-I	COOK	19	4

CONTRACT: 60K63

LOCATION	COMB. CONC. C & G R&R (LF)	HMA SURF R&R FULL DEPTH (SQ YD)	SIDEWALK 5" R&R (SQ FT) 18" CARRIAGE	SIDEWALK 5" R&R (SQ FT) 5' PARALLEL	DRIVEWAY 8" R&R (SQ FT)	SALT TOLERANT SODDING (SQ YD)	REMARKS
5550 S. Kenneth	6.0	1.0	9.0	0.0	0.0	0.0	
5644 S. Kenneth	5.0	0.8	0.0	0.0	0.0	0.8	
5707 S. Kenneth	5.0	0.8	0.0	0.0	0.0	0.8	Adjacent to sewer
5717 S. Kenneth	5.0	0.8	7.5	0.0	0.0	0.0	
5725 S. Kenneth	5.0	0.8	7.5	0.0	0.0	0.0	
5735 S. Kenneth	5.0	0.8	7.5	0.0	0.0	0.0	
5742 S. Kenneth	10.0	1.7	15.0	0.0	0.0	0.0	
5745 S. Kenneth	5.0	0.8	7.5	0.0	0.0	0.0	
6659 S. Kenneth	10.0	1.7	15.0	0.0	0.0	0.0	Radius Corner
6801 S. Kenneth	20.0	3.3	12.0	0.0	0.0	2.0	Radius Corner
6858 S. Kenneth	20.0	3.3	0.0	0.0	0.0	3.3	
7751 S. Kenneth	10.0	1.7	0.0	0.0	15.0	0.0	End of drive
7755 S. Kenneth	10.0	1.7	0.0	0.0	15.0	0.0	End of drive
7827 S. Kenneth	5.0	0.8	0.0	0.0	7.5	0.0	End of drive
7800 S. Kenneth	10.0	1.7	0.0	0.0	15.0	0.0	End of drive
8116 - 8120 S. Kenneth	5.0	0.8	0.0	25.0	0.0	0.0	At 8120
8174 S. Kenneth	5.0	0.8	0.0	25.0	0.0	0.0	Corner Radius
8153 S. Kenneth	10.0	1.7	0.0	50.0	0.0	0.0	
8142 S. Kenneth	10.0	1.7	0.0	50.0	0.0	0.0	
8129 - 8135 S. Kenneth	10.0	1.7	0.0	50.0	0.0	0.0	Adjacent to Sewer
5655 S. Kilbourn	5.0	0.8	0.0	0.0	0.0	0.8	
5659 S. Kilbourn	8.0	1.3	0.0	40.0	0.0	0.0	Side of house
6355 S. Kilbourn	5.0	0.8	75.0	0.0	0.0	0.0	
7717 S. Kilbourn	5.0	0.8	0.0	0.0	7.5	0.0	Behind side drive
7841 S. Kilbourn	10.0	1.7	0.0	0.0	15.0	0.0	
7845 S. Kilbourn	5.0	0.8	0.0	0.0	7.5	0.0	
SUB-TOTAL	209.0	34.8	156.0	240.0	82.5	7.8	

ILLINOIS DEPARTMENT OF TRANSPORTATION
SCHEDULE OF QUANTITIES

ROUTE	SECTION	COUNTY	TOTAL SHEETS	SHEET NUMBER
VARIOUS	2010-027-I	COOK	19	5

CONTRACT: 60K63

LOCATION	COMB. CONC. C & G R&R (LF)	HMA SURF R&R FULL DEPTH (SQ YD)	SIDEWALK 5" R&R (SQ FT) 18" CARRIAGE	SIDEWALK 5" R&R (SQ FT) 5' PARALLEL	DRIVEWAY 8" R&R (SQ FT)	SALT TOLERANT SODDING (SQ YD)	REMARKS
4415 W. 55th St	8.0	1.3	12.0	0.0	0.0	0.0	
4417 W. 55th St	7.0	1.2	10.5	0.0	0.0	0.0	
4137 W. 55th St	5.0	0.8	0.0	0.0	0.0	0.8	
4051 W. 56th Place	5.0	0.8	0.0	0.0	0.0	0.8	
4059 W. 56th Place	5.0	0.8	3.0	0.0	0.0	0.5	
4118 W. 56th Place	10.0	1.7	0.0	0.0	0.0	1.7	
4023 W. 56th Place	10.0	1.7	15.0	0.0	0.0	0.0	
4028 W. 56th Place	5.0	0.8	7.5	0.0	0.0	0.0	
4034 W. 56th Place	12.0	2.0	18.0	0.0	0.0	0.0	
4035 W. 56th Place	10.0	1.7	15.0	0.0	0.0	0.0	
4019 W. 56th St	10.0	1.7	3.0	0.0	0.0	1.3	
4029 W. 56th St	7.0	1.2	10.5	0.0	0.0	0.0	
4031 W. 56th St	5.0	0.8	0.0	0.0	0.0	0.8	
4044 W. 56th St	20.0	3.3	21.0	0.0	0.0	1.0	
4014 W. 57th Place	5.0	0.8	3.0	0.0	0.0	0.5	
4021 W. 57th Place	5.0	0.8	7.5	0.0	0.0	0.0	
4107 W. 57th Place	10.0	1.7	15.0	0.0	0.0	0.0	
4110 W. 57th Place	10.0	1.7	15.0	0.0	0.0	0.0	
4113 W. 57th Place	5.0	0.8	7.5	0.0	0.0	0.0	
4139 W.57th Place	5.0	0.8	7.5	0.0	0.0	0.0	
4058 W. 57th Place	15.0	2.5	7.5	0.0	0.0	1.7	
4024 W. 57th St	5.0	0.8	1.5	0.0	0.0	0.7	
4046 W. 57th St	5.0	0.8	7.5	0.0	0.0	0.0	
4107 W. 57th St	20.0	3.3	15.0	0.0	0.0	1.7	
4113 W. 57th St	5.0	0.8	7.5	0.0	0.0	0.0	
4134 W. 57th St	5.0	0.8	7.5	0.0	0.0	0.0	
4144 W. 57th St	15.0	2.5	6.0	0.0	0.0	1.8	Alley radius
4130 W. 57th St	5.0	0.8	7.5	0.0	0.0	0.0	
SUB-TOTAL	234.0	39.0	231.0	0.0	0.0	13.3	

ILLINOIS DEPARTMENT OF TRANSPORTATION
SCHEDULE OF QUANTITIES

ROUTE	SECTION	COUNTY	TOTAL SHEETS	SHEET NUMBER
VARIOUS	2010-027-I	COOK	19	6

CONTRACT: 60K63

LOCATION	COMB. CONC. C & G R&R (LF)	HMA SURF R&R FULL DEPTH (SQ YD)	SIDEWALK 5" R&R (SQ FT) 18" CARRIAGE	SIDEWALK 5" R&R (SQ FT) 5' PARALLEL	DRIVEWAY 8" R&R (SQ FT)	SALT TOLERANT SODDING (SQ YD)	REMARKS
5635 S. Keeler	5.0	0.8	0.0	0.0	0.0	0.8	
7808 S. Keeler	15.0	2.5	22.5	0.0	0.0	0.0	
7818 S. Keeler	15.0	2.5	22.5	0.0	0.0	0.0	
7822 S. Keeler	15.0	2.5	22.5	0.0	0.0	0.0	
7844 S. Keeler	15.0	2.5	22.5	0.0	0.0	0.0	
7856 S. Keeler	15.0	2.5	10.5	0.0	12.0	0.0	
5624 S. Karlov	5.0	0.8	7.5	0.0	0.0	0.0	
5650 S. Karlov	5.0	0.8	7.5	0.0	0.0	0.0	
5526 S. Karlov	5.0	0.8	7.5	0.0	0.0	0.0	
5542 S. Karlov	5.0	0.8	7.5	0.0	0.0	0.0	
6100 S. Karlov	5.0	0.8	7.5	0.0	0.0	0.0	Corner Radius
6107 S. Karlov	8.0	1.3	12.0	0.0	0.0	0.0	
6146 S. Karlov	5.0	0.8	0.0	0.0	0.0	0.8	
6242 S. Karlov	5.0	0.8	0.0	0.0	0.0	0.8	Corner Radius
6714 S. Karlov	6.0	1.0	9.0	0.0	0.0	0.0	
6800 S. Karlov	5.0	0.8	0.0	0.0	0.0	0.8	
7733 S. Karlov	15.0	2.5	22.5	0.0	0.0	0.0	
7754 S. Karlov	15.0	2.5	22.5	0.0	0.0	0.0	
7774 S. Karlov	15.0	2.5	22.5	0.0	0.0	0.0	
7762 S. Karlov	20.0	3.3	30.0	0.0	0.0	0.0	
7838 S. Karlov	15.0	2.5	22.5	0.0	0.0	0.0	
5554 S. Kedvale	5.0	0.8	0.0	0.0	0.0	0.8	
5501 S. Kedvale	5.0	0.8	0.0	0.0	0.0	0.8	Side of house
5558 S. Kedvale	8.0	1.3	0.0	0.0	0.0	1.3	Yellow Paint
5554 S. Kedvale	5.0	0.8	0.0	0.0	0.0	0.8	
5531 S. Kedvale	5.0	0.8	3.0	0.0	0.0	0.5	
6111 S. Kedvale	5.0	0.8	7.5	0.0	0.0	0.0	
6558 S. Kedvale	15.0	2.5	22.5	0.0	0.0	0.0	Yellow Paint
6847 S. Kedvale	10.0	1.7	3.0	0.0	0.0	1.3	
7800 S. Kedvale	15.0	2.5	22.5	0.0	0.0	0.0	
7855 S. Kedvale	18.0	3.0	27.0	0.0	0.0	0.0	
SUB-TOTAL	305.0	50.8	364.5	0.0	12.0	9.0	

ILLINOIS DEPARTMENT OF TRANSPORTATION
SCHEDULE OF QUANTITIES

ROUTE	SECTION	COUNTY	TOTAL SHEETS	SHEET NUMBER
VARIOUS	2010-027-I	COOK	19	7

CONTRACT: 60K63

LOCATION	COMB. CONC. C & G R&R (LF)	HMA SURF R&R FULL DEPTH (SQ YD)	SIDEWALK 5" R&R (SQ FT) 18" CARRIAGE	SIDEWALK 5" R&R (SQ FT) 5' PARALLEL	DRIVEWAY 8" R&R (SQ FT)	SALT TOLERANT SODDING (SQ YD)	REMARKS
5110 W. 64th St	35.0	5.8	52.5	0.0	0.0	0.0	
5210 W. 64th St	30.0	5.0	30.0	0.0	15.0	0.0	
5223 W. 64th St	25.0	4.2	0.0	0.0	15.0	2.5	
5227 W. 64th St	20.0	3.3	0.0	0.0	15.0	1.7	
5233 W. 64th St	25.0	4.2	0.0	0.0	7.5	3.3	
5542 W. 64th St	8.0	1.3	0.0	0.0	0.0	1.3	Radius by alley
5506 W. 64th St	5.0	0.8	0.0	0.0	0.0	0.8	
5504 W. 64th St	5.0	0.8	0.0	0.0	0.0	0.8	
5644 W. 64th St	5.0	0.8	0.0	0.0	0.0	0.8	
5648 W. 64th St	5.0	0.8	0.0	0.0	0.0	0.8	
5621 W. 64th St	5.0	0.8	0.0	0.0	0.0	0.8	
5624 W. 64th St	5.0	0.8	0.0	0.0	0.0	0.8	
5728 W. 64th St	8.0	1.3	0.0	0.0	0.0	1.3	Adjacent to sewer
5710 W. 64th St	5.0	0.8	0.0	0.0	0.0	0.8	
5716 W. 64th St	5.0	0.8	0.0	0.0	0.0	0.8	
5706 W. 64th St	5.0	0.8	0.0	0.0	0.0	0.8	
5704 W. 64th St	5.0	0.8	0.0	0.0	0.0	0.8	
5700 W. 64th St	5.0	0.8	0.0	0.0	0.0	0.8	
5748 W. 64th St	5.0	0.8	7.5	0.0	0.0	0.0	
5736 W. 64th St	5.0	0.8	0.0	0.0	0.0	0.8	
5740 W. 64th St	5.0	0.8	7.5	0.0	0.0	0.0	
5177 W. 64th Place	10.0	1.7	15.0	0.0	0.0	0.0	Yellow Paint
5616 W. 64th Place	5.0	0.8	0.0	0.0	0.0	0.8	
5624 W. 64th Place	5.0	0.8	0.0	0.0	0.0	0.8	
5636 W. 64th Place	5.0	0.8	0.0	0.0	0.0	0.8	
5644 W. 64th Place	5.0	0.8	0.0	0.0	0.0	0.8	
3827 W. 64th Place	5.0	0.8	30.0	0.0	0.0	0.0	
5900 W. 64th Place	5.0	0.8	3.0	0.0	0.0	0.5	
3900 W. 65th St	25.0	4.2	0.0	0.0	0.0	4.2	Side of house
3813 W. 65th St	5.0	0.8	0.0	0.0	0.0	0.8	Adjacent to Type 1 Structure
5528 W. 65th St	6.0	1.0	9.0	0.0	0.0	0.0	
3900 W. 65th St	25.0	4.2	0.0	0.0	0.0	4.2	Side of House
3626 - 3628 W. 65th Place	6.0	1.0	0.0	0.0	0.0	1.0	Yellow Paint
3812 W. 65th Place	20.0	3.3	22.5	0.0	0.0	0.8	
3823 W. 65th Place	15.0	2.5	6.0	0.0	0.0	1.8	
SUB-TOTAL	363.0	60.5	183.0	0.0	52.5	36.8	

ILLINOIS DEPARTMENT OF TRANSPORTATION
SCHEDULE OF QUANTITIES

ROUTE	SECTION	COUNTY	TOTAL SHEETS	SHEET NUMBER
VARIOUS	2010-027-I	COOK	19	8

CONTRACT: 60K63

LOCATION	COMB. CONC. C & G R&R (LF)	HMA SURF R&R FULL DEPTH (SQ YD)	SIDEWALK 5" R&R (SQ FT) 18" CARRIAGE	SIDEWALK 5" R&R (SQ FT) 5' PARALLEL	DRIVEWAY 8" R&R (SQ FT)	SALT TOLERANT SODDING (SQ YD)	REMARKS
4411 W. 81st St	10.0	1.7	0.0	50.0	0.0	0.0	
4235 W. 81st St	20.0	3.3	0.0	50.0	15.0	0.0	
4211 W. 81st St	10.0	1.7	0.0	0.0	15.0	0.0	
4423 W. 81st St	5.0	0.8	0.0	25.0	0.0	0.0	Adjacent to Sewer
4414 W. 82nd St	5.0	0.8	7.5	0.0	0.0	0.0	
4336 W. 82nd Place	5.0	0.8	7.5	0.0	0.0	0.0	
4320 W. 82nd Place	20.0	3.3	30.0	0.0	0.0	0.0	
4314 W. 82nd Place	10.0	1.7	15.0	0.0	0.0	0.0	
4308 W. 82nd Place	15.0	2.5	22.5	0.0	0.0	0.0	
4300 W. 82nd Place	15.0	2.5	22.5	0.0	0.0	0.0	
4421 W. 83rd Place	7.0	1.2	0.0	35.0	0.0	0.0	Across from church
4420 W. 83rd St	50.0	8.3	0.0	250.0	0.0	0.0	in front of church
5757 S. Kenton	15.0	2.5	0.0	0.0	0.0	2.5	Side of house
7800 S. Kenton	18.0	3.0	0.0	0.0	0.0	3.0	
8022 S. Kenton	15.0	2.5	0.0	0.0	22.5	0.0	
8028 S. Kenton	15.0	2.5	0.0	0.0	22.5	0.0	
8034 S. Kenton	8.0	1.3	12.0	0.0	0.0	0.0	
8044 S. Kenton	5.0	0.8	7.5	0.0	0.0	0.0	
8048 S. Kenton	5.0	0.8	7.5	0.0	0.0	0.0	
8054 S. Kenton	10.0	1.7	15.0	0.0	0.0	0.0	
8060 S. Kenton	15.0	2.5	7.5	0.0	15.0	0.0	
8064 S. Kenton	11.0	1.8	16.5	0.0	0.0	0.0	
8072 S. Kenton	8.0	1.3	12.0	0.0	0.0	0.0	
8086 S. Kenton	10.0	1.7	15.0	0.0	0.0	0.0	
8088 S. Kenton	10.0	1.7	15.0	0.0	0.0	0.0	
6524 S. Springfield	5.0	0.8	7.5	0.0	0.0	0.0	
6545 S. Springfield	7.0	1.2	10.5	0.0	0.0	0.0	
6732 S. Springfield	5.0	0.8	7.5	0.0	0.0	0.0	
6210 S. Tripp	5.0	0.8	7.5	0.0	0.0	0.0	
8204 S. Tripp	5.0	0.8	7.5	0.0	0.0	0.0	
8208 S. Tripp	5.0	0.8	7.5	0.0	0.0	0.0	
8172 S. Tripp	10.0	1.7	15.0	0.0	0.0	0.0	
8132 S. Tripp	10.0	1.7	15.0	0.0	0.0	0.0	Yellow paint
8128 S. Tripp	5.0	0.8	7.5	0.0	0.0	0.0	
8122 S. Tripp	5.0	0.8	7.5	0.0	0.0	0.0	
8100 S. Tripp	15.0	2.5	22.5	0.0	0.0	0.0	
SUB-TOTAL	394.0	65.7	328.5	410.0	90.0	5.5	

ILLINOIS DEPARTMENT OF TRANSPORTATION

SCHEDULE OF QUANTITIES

ROUTE	SECTION	COUNTY	TOTAL SHEETS	SHEET NUMBER
VARIOUS	2010-027-I	COOK	19	9

CONTRACT: 60K63

LOCATION	COMB. CONC. C & G R&R (LF)	HMA SURF R&R FULL DEPTH (SQ YD)	SIDEWALK 5" R&R (SQ FT) 18" CARRIAGE	SIDEWALK 5" R&R (SQ FT) 5' PARALLEL	DRIVEWAY 8" R&R (SQ FT)	SALT TOLERANT SODDING (SQ YD)	REMARKS
5530 S. Kostner	5.0	0.8	0.0	0.0	0.0	0.8	
5538 S. Kostner	5.0	0.8	7.5	0.0	0.0	0.0	
6730 S. Kostner	10.0	1.7	15.0	0.0	0.0	0.0	Yellow Paint
6738 S. Kostner	5.0	0.8	7.5	0.0	0.0	0.0	
6743 S. Kostner	15.0	2.5	22.5	0.0	0.0	0.0	
6745 S. Kostner	22.0	3.7	33.0	0.0	0.0	0.0	
6751 S. Kostner	12.0	2.0	18.0	0.0	0.0	0.0	Adjacent to sewer
6858 S. Kostner	5.0	0.8	7.5	0.0	0.0	0.0	Yellow Paint
8107 S. Kostner	5.0	0.8	7.5	0.0	0.0	0.0	
8205 S. Scottsdale	5.0	0.8	7.5	0.0	0.0	0.0	
8221 S. Scottsdale	5.0	0.8	0.0	0.0	0.0	0.8	Corner radius
8159 S. Scottsdale	5.0	0.8	0.0	0.0	0.0	0.8	
8137 S. Scottsdale	5.0	0.8	0.0	0.0	0.0	0.8	
8101 S. Scottsdale	5.0	0.8	0.0	0.0	0.0	0.8	
6368 S. Latrobe	5.0	0.8	0.0	0.0	0.0	0.8	Adjacent to sewer
6371 S. Latrobe	5.0	0.8	0.0	0.0	0.0	0.8	Adjacent to sewer
6356 S. Latrobe	5.0	0.8	0.0	10.0	0.0	0.5	
4217 W. 77th St	7.0	1.2	0.0	0.0	10.5	0.0	
4221 W. 77th St	5.0	0.8	0.0	0.0	7.5	0.0	
4305 W. 77th St	5.0	0.8	0.0	0.0	0.0	0.8	Side of house
4154 W. 77th Place	20.0	3.3	30.0	0.0	0.0	0.0	
4220 W. 77th Place	8.0	1.3	12.0	0.0	0.0	0.0	
4131 W. 78th St	15.0	2.5	22.5	0.0	0.0	0.0	
4125 W. 78th St	10.0	1.7	15.0	0.0	0.0	0.0	
4129 W. 78th St	8.0	1.3	12.0	0.0	0.0	0.0	
4130 W. 78th St	9.0	1.5	13.5	0.0	0.0	0.0	
4136 W. 78th St	5.0	0.8	7.5	0.0	0.0	0.0	
4155 W. 78th St	10.0	1.7	15.0	0.0	0.0	0.0	
4157 W. 78th St	10.0	1.7	15.0	0.0	0.0	0.0	
4353 W. 78th St	10.0	1.7	0.0	0.0	15.0	0.0	
4320 W. 78th St	10.0	1.7	0.0	0.0	15.0	0.0	
4340 W. 78th St	5.0	0.8	0.0	0.0	0.0	0.8	
4155 W. 78th Place	20.0	3.3	22.5	0.0	7.5	0.0	
4157 W. 78th Place	18.0	3.0	18.0	0.0	9.0	0.0	
4111 W. 78th Place	20.0	3.3	22.5	0.0	7.5	0.0	
4133 W. 78th Place	20.0	3.3	22.5	0.0	7.5	0.0	
SUB-TOTAL	339.0	56.5	354.0	10.0	79.5	8.0	

ILLINOIS DEPARTMENT OF TRANSPORTATION
SCHEDULE OF QUANTITIES

ROUTE	SECTION	COUNTY	TOTAL SHEETS	SHEET NUMBER
VARIOUS	2010-027-I	COOK	19	10

CONTRACT: 60K63

LOCATION	COMB. CONC. C & G R&R (LF)	HMA SURF R&R FULL DEPTH (SQ YD)	SIDEWALK 5" R&R (SQ FT) 18" CARRIAGE	SIDEWALK 5" R&R (SQ FT) 5' PARALLEL	DRIVEWAY 8" R&R (SQ FT)	SALT TOLERANT SODDING (SQ YD)	REMARKS
5658 S. Kolin	10.0	1.7	0.0	50.0	0.0	0.0	Side of house
5620 S. Kolin	5.0	0.8	7.5	0.0	0.0	0.0	
5622 S. Kolin	5.0	0.8	0.0	0.0	0.0	0.8	
5624 S. Kolin	5.0	0.8	0.0	0.0	0.0	0.8	
5912 S. Kolin	6.0	1.0	0.0	0.0	0.0	1.0	
6616 S. Kolin	13.0	2.2	4.5	0.0	0.0	1.7	
6620 S. Kolin	10.0	1.7	1.5	0.0	0.0	1.5	
6622 S. Kolin	10.0	1.7	7.5	0.0	0.0	0.8	
6626 S. Kolin	10.0	1.7	3.0	0.0	0.0	1.3	
6720 S. Kolin	7.0	1.2	10.5	0.0	0.0	0.0	
6732 S. Kolin	10.0	1.7	15.0	0.0	0.0	0.0	
6736 S. Kolin	36.0	6.0	54.0	0.0	0.0	0.0	Sunken Carriage
6101 S. Major	5.0	0.8	0.0	0.0	0.0	0.8	Yellow Paint
6113 S. Major	5.0	0.8	0.0	0.0	0.0	0.8	
6131 S. Major	5.0	0.8	0.0	0.0	0.0	0.8	Yellow Paint
6137 S. Major	8.0	1.3	3.8	0.0	0.0	0.9	
6141 S. Major	5.0	0.8	0.0	0.0	0.0	0.8	
6151 S. Major	5.0	0.8	4.5	0.0	0.0	0.3	
6155 S. Major	5.0	0.8	3.0	0.0	0.0	0.5	
6201 S. Major	5.0	0.8	0.0	0.0	0.0	0.8	Yellow Paint
6205 S. Major	5.0	0.8	0.0	0.0	0.0	0.8	
6209 S. Major	5.0	0.8	7.5	0.0	0.0	0.0	
6211 S. Major	5.0	0.8	0.0	0.0	0.0	0.8	Adjacent to Sewer
6215 S. Major	5.0	0.8	0.0	0.0	0.0	0.8	
6221 S. Major	6.0	1.0	9.0	0.0	0.0	0.0	
6223 S. Major	33.0	5.5	3.0	0.0	0.0	5.2	
6315 S. Long	8.0	1.3	0.0	10.0	0.0	1.0	
6317 S. Long	8.0	1.3	0.0	10.0	0.0	1.0	
6319 S. long	10.0	1.7	0.0	10.0	0.0	1.0	
6321 S. Long	9.0	1.5	0.0	10.0	0.0	1.2	
6323 S. Long	7.0	1.2	0.0	10.0	0.0	0.8	
6325 S. Long	10.0	1.7	0.0	10.0	0.0	1.3	
6626 S. Kilpatrick	5.0	0.8	7.5	0.0	0.0	0.0	Yellow Paint
SUB-TOTAL	286.0	47.7	141.8	110.0	0.0	27.9	

ILLINOIS DEPARTMENT OF TRANSPORTATION
SCHEDULE OF QUANTITIES

ROUTE	SECTION	COUNTY	TOTAL SHEETS	SHEET NUMBER
VARIOUS	2010-027-I	COOK	19	11

CONTRACT: 60K63

LOCATION	COMB. CONC. C & G R&R (LF)	HMA SURF R&R FULL DEPTH (SQ YD)	SIDEWALK 5" R&R (SQ FT) 18" CARRIAGE	SIDEWALK 5" R&R (SQ FT) 5' PARALLEL	DRIVEWAY 8" R&R (SQ FT)	SALT TOLERANT SODDING (SQ YD)	REMARKS
5520 S. Pulaski	5.0	0.8	0.0	25.0	0.0	0.0	
5534 S. Pulaski	5.0	0.8	0.0	25.0	0.0	0.0	
5632 S. Pulaski	5.0	0.8	0.0	25.0	0.0	0.0	
5640 S. Pulaski	5.0	0.8	0.0	25.0	0.0	0.0	Side of house
5708-5714 S. Pulaski	20.0	3.3	0.0	100.0	0.0	0.0	
6628 S. Pulaski	5.0	0.8	7.5	0.0	0.0	0.0	
5537 S. Komensky	6.0	1.0	6.0	0.0	0.0	0.3	
5527 S. Komensky	4.0	0.7	6.0	0.0	0.0	0.0	
5511 S. Komensky	5.0	0.8	7.5	0.0	0.0	0.0	
5501 S. Komensky	5.0	0.8	0.0	0.0	0.0	0.8	
5932 S. Komensky	5.0	0.8	0.0	0.0	0.0	0.8	Yellow Paint
5931 S. Komensky	5.0	0.8	3.0	0.0	0.0	0.5	
6101 S. Komensky	5.0	0.8	0.0	0.0	0.0	0.8	Corner Radius
6945 S. Komensky	5.0	0.8	0.0	0.0	0.0	0.8	
6941 S. Komensky	5.0	0.8	0.0	0.0	0.0	0.8	
6940 S. Komensky	5.0	0.8	7.5	0.0	0.0	0.0	
6932 S. Komensky	5.0	0.8	7.5	0.0	0.0	0.0	
6920 S. Komensky	5.0	0.8	0.0	0.0	0.0	0.8	
6914 S. Komensky	15.0	2.5	3.0	0.0	0.0	2.2	
6714 S. Komensky	14.0	2.3	9.0	0.0	0.0	1.3	Radius Corner
6656 S. Komensky	5.0	0.8	0.0	0.0	0.0	0.8	Yellow Paint
7760 S. Komensky	5.0	0.8	7.5	0.0	0.0	0.0	
6158 S. Kildare	5.0	0.8	7.5	0.0	0.0	0.0	Side of house near alley
6317 S. Kildare	15.0	2.5	22.5	0.0	0.0	0.0	
8121 S. Kildare	10.0	1.7	0.0	50.0	0.0	0.0	
8123 S. Kildare	10.0	1.7	0.0	50.0	0.0	0.0	
8141 S. Kildare	10.0	1.7	0.0	50.0	0.0	0.0	
8145 S. Kildare	10.0	1.7	0.0	50.0	0.0	0.0	
8151 S. Kildare	15.0	2.5	0.0	75.0	0.0	0.0	Adjacent to NEW sidewalk
8155 S. Kildare	5.0	0.8	0.0	25.0	0.0	0.0	
SUB-TOTAL	224.0	37.3	94.5	500.0	0.0	10.2	

ILLINOIS DEPARTMENT OF TRANSPORTATION
SCHEDULE OF QUANTITIES

ROUTE	SECTION	COUNTY	TOTAL SHEETS	SHEET NUMBER
VARIOUS	2010-027-I	COOK	19	12

CONTRACT: 60K63

LOCATION	COMB. CONC. C & G R&R (LF)	HMA SURF R&R FULL DEPTH (SQ YD)	SIDEWALK 5" R&R (SQ FT) 18" CARRIAGE	SIDEWALK 5" R&R (SQ FT) 5' PARALLEL	DRIVEWAY 8" R&R (SQ FT)	SALT TOLERANT SODDING (SQ YD)	REMARKS
3800 W. 62nd Place	50.0	8.3	0.0	30.0	0.0	7.3	
4058 W. 63rd St	5.0	0.8	0.0	0.0	0.0	0.8	
5226 W. 63rd Place	5.0	0.8	0.0	0.0	0.0	0.8	
5439 W. 63rd Place	6.0	1.0	0.0	30.0	0.0	0.0	
5509 W. 63rd Place	5.0	0.8	0.0	0.0	0.0	0.8	Adjacent to sewer
5517 W. 63rd Place	5.0	0.8	0.0	0.0	0.0	0.8	
5521 W. 63rd Place	5.0	0.8	0.0	0.0	0.0	0.8	
5533 W. 63rd Place	5.0	0.8	0.0	0.0	0.0	0.8	
5632 W. 63rd Place	5.0	0.8	0.0	0.0	0.0	0.8	
5636 W. 63rd Place	5.0	0.8	0.0	0.0	0.0	0.8	
5638 W. 63rd Place	5.0	0.8	0.0	0.0	0.0	0.8	
5648 W. 63rd Place	5.0	0.8	7.5	0.0	0.0	0.0	
5644 W. 63rd Place	5.0	0.8	0.0	0.0	0.0	0.8	Adjacent to sewer
5708 W. 63rd Place	5.0	0.8	0.0	0.0	0.0	0.8	
5710 W. 63rd Place	5.0	0.8	3.0	0.0	0.0	0.5	Adjacent to sewer
5751 W. 63rd Place	5.0	0.8	0.0	0.0	0.0	0.8	Adjacent to sewer
5753 W. 63rd Place	5.0	0.8	0.0	0.0	0.0	0.8	
5755 W. 63rd Place	5.0	0.8	0.0	0.0	0.0	0.8	
5758 W. 63rd Place	15.0	2.5	0.0	0.0	0.0	2.5	Radius by alley
5927 W. 63rd Place	5.0	0.8	0.0	0.0	0.0	0.8	on blvd side of street
5929 W. 63rd Place	5.0	0.8	0.0	0.0	0.0	0.8	on blvd side of street
5933 W. 63rd Place	5.0	0.8	0.0	0.0	0.0	0.8	on blvd side of street
5935 W. 63rd Place	5.0	0.8	0.0	0.0	0.0	0.8	on blvd side of street
5939 W. 63rd Place	5.0	0.8	0.0	0.0	0.0	0.8	on blvd side of street
5917 S. Parkside	6.0	1.0	0.0	0.0	0.0	1.0	Adjacent to sewer (unfinished repair)
5915 S. Parkside	5.0	0.8	0.0	0.0	0.0	0.8	
6226 S. Parkside	5.0	0.8	7.5	0.0	0.0	0.0	
6231 S. Parkside	5.0	0.8	0.0	0.0	0.0	0.8	Yellow Paint
6243 S. Parkside	5.0	0.8	0.0	0.0	0.0	0.8	
6245 S. Parkside	8.0	1.3	4.5	0.0	0.0	0.8	
6114 S. Parkside	5.0	0.8	7.5	0.0	0.0	0.0	
6205 S. Parkside	15.0	2.5	22.5	0.0	0.0	0.0	
6207 S. Parkside	20.0	3.3	0.0	0.0	0.0	3.3	
6217 S. Parkside	5.0	0.8	7.5	0.0	0.0	0.0	
SUB-TOTAL	255.0	42.5	60.0	60.0	0.0	33.8	

ILLINOIS DEPARTMENT OF TRANSPORTATION

SCHEDULE OF QUANTITIES

ROUTE	SECTION	COUNTY	TOTAL SHEETS	SHEET NUMBER
VARIOUS	2010-027-I	COOK	19	13

CONTRACT: 60K63

LOCATION	COMB. CONC. C & G R&R (LF)	HMA SURF R&R FULL DEPTH (SQ YD)	SIDEWALK 5" R&R (SQ FT) 18" CARRIAGE	SIDEWALK 5" R&R (SQ FT) 5' PARALLEL	DRIVEWAY 8" R&R (SQ FT)	SALT TOLERANT SODDING (SQ YD)	REMARKS
6339 S. Central Ave	5.0	0.8	0.0	25.0	0.0	0.0	
6345 S. Central Ave	5.0	0.8	0.0	25.0	0.0	0.0	
6359 S. Central Ave	5.0	0.8	0.0	25.0	0.0	0.0	
6332 S. Central Ave	5.0	0.8	0.0	25.0	0.0	0.0	
6342 S. Central Ave	5.0	0.8	0.0	25.0	0.0	0.0	
6348 S. Central Ave	5.0	0.8	0.0	25.0	0.0	0.0	
6408 S. Central Ave	5.0	0.8	0.0	25.0	0.0	0.0	
6416 S. Central Ave	20.0	3.3	0.0	100.0	0.0	0.0	
6319 S. Austin	5.0	0.8	0.0	25.0	0.0	0.0	
6323 S. Austin	5.0	0.8	0.0	25.0	0.0	0.0	
6444 S. Lockwood	5.0	0.8	0.0	0.0	0.0	0.8	
6459 S. Lockwood	10.0	1.7	15.0	0.0	0.0	0.0	
6200 S. Mason	16.0	2.7	0.0	0.0	0.0	2.7	SW Corner Radius
6200 S. Mason	8.0	1.3	0.0	40.0	0.0	0.0	NW Corner Radius (By church)
6245 S. Mason	12.0	2.0	0.0	0.0	0.0	2.0	Radius by alley
6221 S. Mayfield	5.0	0.8	0.0	0.0	0.0	0.8	
6153 S. Mayfield	30.0	5.0	0.0	0.0	0.0	5.0	
5514 S. Kolmar	5.0	0.8	0.0	0.0	0.0	0.8	
6410 S. Lawler	10.0	1.7	0.0	0.0	0.0	1.7	
3804 W. 67th Place	5.0	0.8	0.0	0.0	0.0	0.8	
3808 W. 67th Place	5.0	0.8	7.5	0.0	0.0	0.0	
3845 W. 67th Place	9.0	1.5	13.5	0.0	0.0	0.0	
3839 W. 67th Place	12.0	2.0	18.0	0.0	0.0	0.0	
3914 W. 67th Place	20.0	3.3	10.5	0.0	0.0	2.2	
3859 W. 67th Place	5.0	0.8	4.5	0.0	0.0	0.3	
3858 W. 67th Place	21.0	3.5	0.0	0.0	24.0	0.8	
3828 W. 68th St	5.0	0.8	7.5	0.0	0.0	0.0	
3901 W. 68th St	5.0	0.8	0.0	0.0	0.0	0.8	Side of house near driveway
3848 W. 68th St	5.0	0.8	7.5	0.0	0.0	0.0	
3850 W. 68th St	5.0	0.8	7.5	0.0	0.0	0.0	
3734 W. 68th Place	15.0	2.5	22.5	0.0	0.0	0.0	
3858 W. 68th Place	27.0	4.5	10.5	0.0	30.0	0.0	
3901 W. 68th Place	21.0	3.5	0.0	0.0	31.5	0.0	Driveway Side of house
SUB-TOTAL	326.0	54.3	124.5	365.0	85.5	18.8	

ILLINOIS DEPARTMENT OF TRANSPORTATION

SCHEDULE OF QUANTITIES

ROUTE	SECTION	COUNTY	TOTAL SHEETS	SHEET NUMBER
VARIOUS	2010-027-I	COOK	19	14

CONTRACT: 60K63

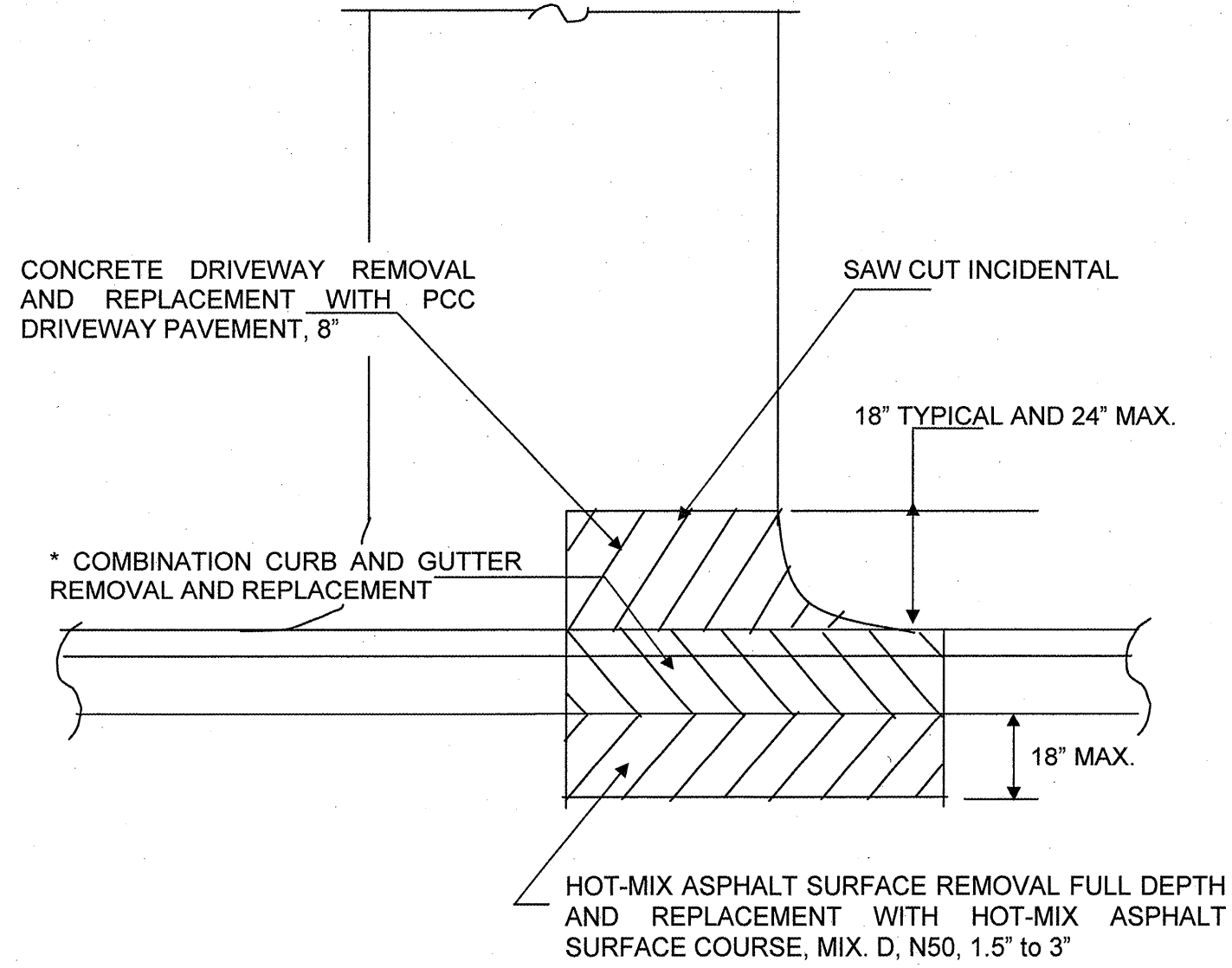
LOCATION	COMB. CONC. C & G R&R (LF)	HMA SURF R&R FULL DEPTH (SQ YD)	SIDEWALK 5" R&R (SQ FT) 18" CARRIAGE	SIDEWALK 5" R&R (SQ FT) 5' PARALLEL	DRIVEWAY 8" R&R (SQ FT)	SALT TOLERANT SODDING (SQ YD)	REMARKS
4050 W. 58th St	5.0	0.8	7.5	0.0	0.0	0.0	
4016 W. 58th St	5.0	0.8	0.0	0.0	0.0	0.8	at alley
4151 W. 58th St	5.0	0.8	0.0	0.0	0.0	0.8	Adjacent to Type 1 Structure
4152 W. 58th St	5.0	0.8	0.0	0.0	0.0	0.8	Adjacent to Type 1 Structure
4147 W. 58th St	50.0	8.3	75.0	0.0	0.0	0.0	
4143 W. 58th St	50.0	8.3	75.0	0.0	0.0	0.0	
4141 W 58th St	50.0	8.3	75.0	0.0	0.0	0.0	
4067 W. 58th St	5.0	0.8	0.0	0.0	0.0	0.8	
4058 W. 58th St	5.0	0.8	0.0	0.0	0.0	0.8	
4049 W. 58th St	5.0	0.8	7.5	0.0	0.0	0.0	
4015 W. 58th St	5.0	0.8	7.5	0.0	0.0	0.0	
4100 W. 59th St	15.0	2.5	0.0	0.0	22.5	0.0	Side by alley
4130 W. 59th St	5.0	0.8	0.0	0.0	0.0	0.8	
4058 W. 59th St	28.0	4.7	42.0	0.0	0.0	0.0	Front & Side
4028 W. 59th St	5.0	0.8	7.5	0.0	0.0	0.0	
3647 W. 59th Place	6.0	1.0	9.0	0.0	0.0	0.0	
3801 W. 66th Place	5.0	0.8	0.0	0.0	0.0	0.8	Side of house
3820 W. 66th Place	5.0	0.8	7.5	0.0	0.0	0.0	
3823 W. 66th Place	5.0	0.8	7.5	0.0	0.0	0.0	
3829 W. 66th Place	10.0	1.7	15.0	0.0	0.0	0.0	Adjacent to Type 1 Structure
3839 W 66th Place	10.0	1.7	6.0	0.0	0.0	1.0	
3844 W. 66th Place	5.0	0.8	4.5	0.0	0.0	0.3	
3800 W. 66th St	5.0	0.8	7.5	0.0	0.0	0.0	Side of house
3844 W. 66th St	5.0	0.8	0.0	0.0	0.0	0.8	Adjacent to Type 1 Structure
3900 W. 69th St	25.0	4.2	0.0	0.0	37.5	0.0	
SUB-TOTAL	324.0	54.0	354.0	0.0	60.0	8.0	

TOTAL FOR PROJECT	3259.0	543.0	2391.8	1695.0	462.0	179.3
--------------------------	---------------	--------------	---------------	---------------	--------------	--------------

ILLINOIS DEPARTMENT OF TRANSPORTATION
SCHEDULE OF QUANTITIES

ROUTE	SECTION	COUNTY	TOTAL SHEETS	SHEET NUMBER
VARIOUS	2010-027-I	COOK	19	15

CONTRACT NO.: 60K63



PLAN VIEW

* PROPOSED DEPRESSED CURB AND EXACT LENGTH SHALL BE DETERMINED IN THE FIELD BY THE ENGINEER (TYPICAL)

ILLINOIS DEPARTMENT OF TRANSPORTATION

DETAIL: CONCRETE DRIVEWAY

VARIABLE - TO MEET EXISTING DIMENSIONS AND FIELD CONDITIONS (SEE NOTE ②)

PROP. CONC. CURB OR CURB AND GUTTER REPLACEMENT IN ACCORDANCE WITH STATE STANDARD 606001. (SEE NOTE ②)

SAW CUT FULL DEPTH - INCLUDED IN THE COST OF SIDEWALK, DRIVEWAY OR MEDIAN SURFACE REMOVAL PAY ITEM.

SEE STATE STANDARD 606001

18" (450) MAX.

EXISTING OR PROPOSED HMA SURFACE (IF APPLICABLE)

1/4" (5) **

EXISTING SIDEWALK, DRIVEWAY, MEDIAN SURFACE, SOD OR GROUND.

PROPOSED SIDEWALK, DRIVEWAY PAVEMENT, MEDIAN SURFACE OR SODDING SALT TOLERANT WITH TOP SOIL, 4" (100) SOD RESTORATION (SEE NOTE ①).

EXISTING CONCRETE PAVEMENT, CONCRETE BASE COURSE OR FLEXIBLE PAVEMENT

3" (75) MIN.

SUITABLE BACKFILL MATERIAL (INCLUDED IN THE COST OF CURB OR CURB AND GUTTER REMOVAL AND REPLACEMENT)

PROPOSED 3/4" (20) PREFORMED EXPANSION JOINT AT CONCRETE SIDEWALKS, DRIVEWAYS, AND MEDIANS. (INCLUDED IN THE COST OF CURB OR CURB AND GUTTER REMOVAL AND REPLACEMENT.)

* 3" (75) MINIMUM FROM TOP AND BOTTOM OF THE CONCRETE PAVEMENT OR BASE COURSE.

** IF THE FINAL SURFACE OF THE PAVEMENT IS CONCRETE, THE GUTTER IS TO BE FLUSH WITH THE PAVEMENT.

NOTE: ① SIDEWALK, DRIVEWAY PAVEMENT OR MEDIAN SURFACE SHALL BE SIMILAR TO THE MATERIAL BEING REMOVED AND WILL BE PAID FOR SEPARATELY.

SODDING, SALT TOLERANT AND TOP SOIL, FURNISH AND PLACE 4" WILL BE PAID FOR SEPARATELY,

② FERTILIZER FOR THE PLACEMENT OF THE SOD IS NOT REQUIRED

③ CURB OR CURB AND GUTTER REPLACEMENT SHALL MATCH THE SHAPE OF THE EXISTING CURB OR CURB AND GUTTER UNLESS OTHERWISE SPECIFIED.

④ FOR CURB OR CURB AND GUTTER REMOVAL AND REPLACEMENT ADJACENT TO FLEXIBLE PAVEMENT DELETE EPOXY COATED TIE BARS.

⑤ LONGITUDINAL BARS, IF ENCOUNTERED IN THE EXISTING CURB OR CURB AND GUTTER, ARE NOT TO BE REPLACED. CUTTING AND REMOVING LONGITUDINAL BARS SHALL BE INCLUDED IN THE COST OF CURB OR CURB AND GUTTER REMOVAL AND REPLACEMENT.

⑥ THE COST OF HMA SURFACE REMOVAL IN THE EXISTING GUTTER FLAG SHALL BE INCLUDED IN THE COST OF THE CURB AND GUTTER REMOVAL AND REPLACEMENT.

⑦ THE REMOVAL AND REPLACEMENT OF THE EXISTING CURB OR CURB AND GUTTER SHALL BE DONE IN ACCORDANCE WITH THE APPLICABLE PORTIONS OF SECTION 440 AND 606 OF THE STANDARD SPECIFICATIONS.

⑧ THE LOCATIONS OF REMOVAL AND REPLACEMENT OF EXISTING CURB OR CURB AND GUTTER SHALL BE DETERMINED BY THE RESIDENT ENGINEER AT THE TIME OF CONSTRUCTION.

UNSUITABLE SUB-BASE MATERIAL TO BE REMOVED, IF DIRECTED BY THE ENGINEER, SHALL BE REPLACED WITH EITHER SUB-BASE GRANULAR MATERIAL, TYPE B OR ADDITIONAL THICKNESS OF CONCRETE.

REMOVAL AND REPLACEMENT 4" (100) OR LESS IS INCLUDED IN THE COST OF CURB OR CURB AND GUTTER REMOVAL AND REPLACEMENT.

REMOVAL AND REPLACEMENT IN EXCESS OF 4" (100) WILL BE PAID FOR IN ACCORDANCE WITH ARTICLE 109.04 OF THE STANDARD SPECIFICATIONS.

PROPOSED #6 (20) EPOXY COATED TIE BARS 24" (600) LONG AT 24" (600) CENTERS WILL NOT BE PAID FOR SEPARATELY. DELETE EPOXY COATED TIE BARS IF EXISTING TIE BARS ARE USUABLE AS DETERMINED BY THE ENGINEER. (SEE NOTE ③).

BASIS OF PAYMENT:

THIS WORK WILL BE PAID FOR AT THE CONTRACT UNIT PRICE PER FOOT (METER) FOR "CURB REMOVAL AND REPLACEMENT" OR "COMBINATION CONCRETE CURB AND GUTTER REMOVAL AND REPLACEMENT".

CURB OR CURB AND GUTTER REMOVAL AND REPLACEMENT

ALL DIMENSIONS ARE IN INCHES (MILLIMETERS) UNLESS OTHERWISE SHOWN.

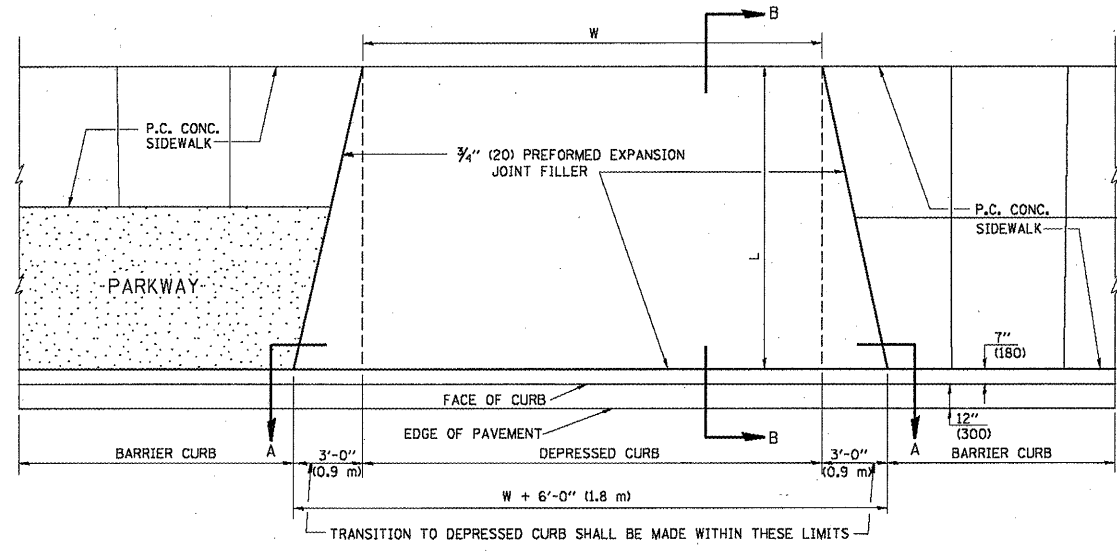
FILE NAME =	USER NAME = drivekoagn	DESIGNED - A. HOUSEH	REVISED - R. SHAH 10-03-96
ct:\pwork\pmsdot\drivekoagn\d0108315\bd24.dgn		DRAWN -	REVISED - A. ABBAS 03-21-97
		CHECKED -	REVISED - M. GOMEZ 01-22-01
		DATE - 03-11-94	REVISED - R. BORO 12-15-09

STATE OF ILLINOIS
DEPARTMENT OF TRANSPORTATION

CURB OR CURB AND GUTTER
REMOVAL AND REPLACEMENT

SCALE: NONE SHEET NO. 1 OF 1 SHEETS STA. TO STA.

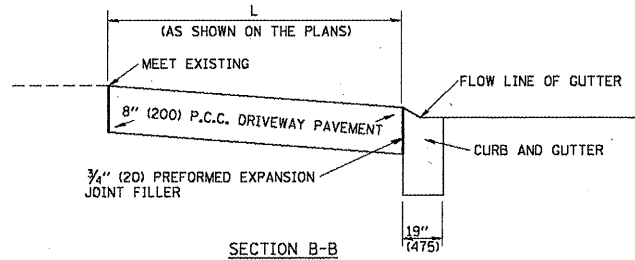
F.A. RTE.	SECTION	COUNTY	TOTAL SHEETS	SHEET NO.
VAR. 2010-027-I		Cook	19	16
BD600-06 (BD-24)		CONTRACT NO. 60K63		
FED. ROAD DIST. NO. 1 ILLINOIS FED. AID PROJECT				



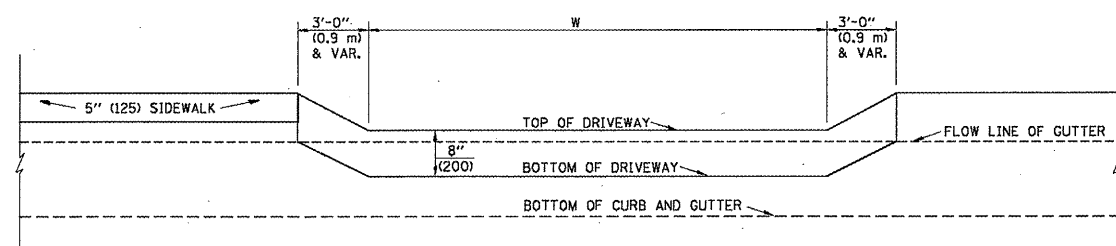
PLAN VIEW

NOTES:

1. EXPANSION JOINTS SHALL BE CONSTRUCTED AS SHOWN ON THE DETAILS FOR P.C.C. SIDEWALK.
2. THE CURB BETWEEN ADJACENT DRIVEWAYS SHALL BE FULL HEIGHT FOR A DISTANCE OF AT LEAST FOUR FEET (1.2 METERS)
3. P.C. CONCRETE DRIVEWAYS SHALL BE CONSTRUCTED AT LOCATIONS SHOWN ON THE PLANS OR AS DIRECTED BY THE ENGINEER.
4. 3/4" (20) PREFORMED EXPANSION JOINTS WILL NOT BE PAID FOR SEPARATELY BUT SHALL BE CONSIDERED INCIDENTAL TO P.C.C. DRIVEWAY PAVEMENT 8" (200).
5. COMBINATION CONC. CURB AND GUTTER SHALL BE MEASURED STRAIGHT ACROSS THE DRIVEWAY. NO ADDITIONAL COMPENSATION WILL BE ALLOWED FOR THE TRANSITION CURB AND GUTTER.

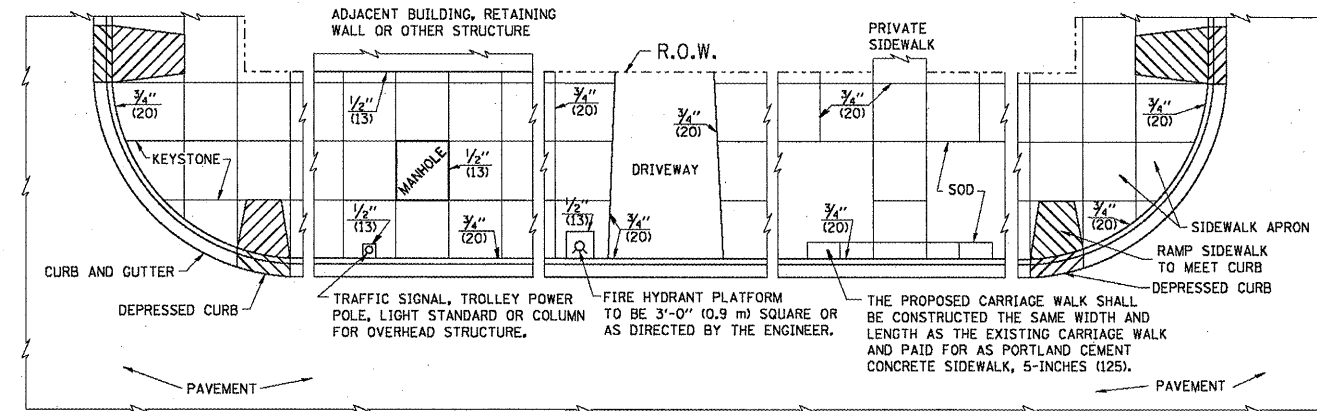


SECTION B-B



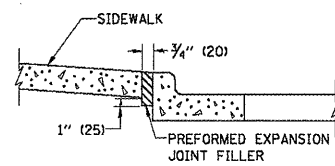
SECTION A-A

P.C.C. DRIVEWAY PAVEMENT DETAIL



NOTES:

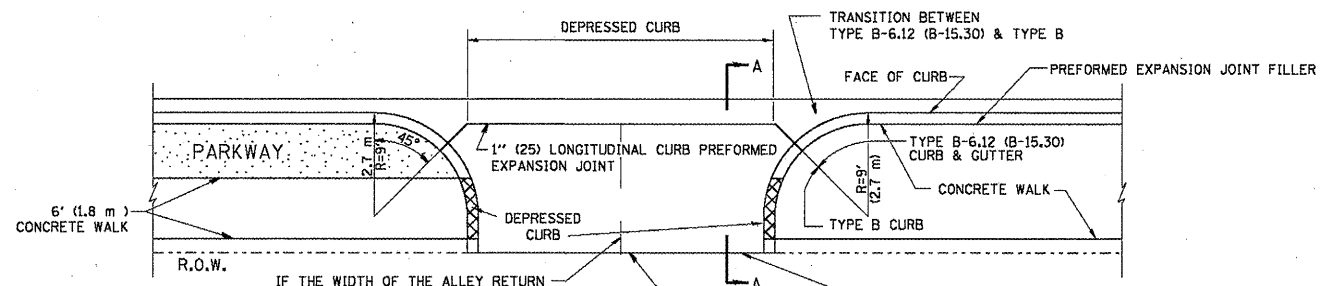
1. ONE-HALF INCH THICK EXPANSION JOINTS SHALL BE PLACED BETWEEN THE SIDEWALK AND ALL STRUCTURES SUCH AS LIGHT STANDARDS, TRAFFIC LIGHT STANDARDS, MANHOLES, WHICH EXTEND THROUGH THE SIDEWALK.
2. 3/4" (20) THICK EXPANSION JOINTS SHALL BE PLACED AT INTERVALS OF NOT MORE THAN 100 FEET (30 METERS) IN THE SIDEWALK, WHERE THE SIDEWALK IS CONSTRUCTED ADJACENT TO PAVEMENT OR CURB HAVING EXPANSION JOINTS, THE EXPANSION JOINTS IN THE SIDEWALK SHALL BE PLACED OPPOSITE THE EXISTING EXPANSION JOINTS AS NEARLY AS PRACTICABLE. EXPANSION JOINTS SHALL ALSO BE PLACED WHERE THE SIDEWALK ABUTS EXISTING SIDEWALKS, BETWEEN DRIVEWAY PAVEMENT AND SIDEWALK, AND BETWEEN SIDEWALK AND CURBS WHERE THE SIDEWALK ABUTS A CURB.



SLOPE FOR SIDEWALK
1" (25) IN 3'-0" (0.9 m) IN CHICAGO

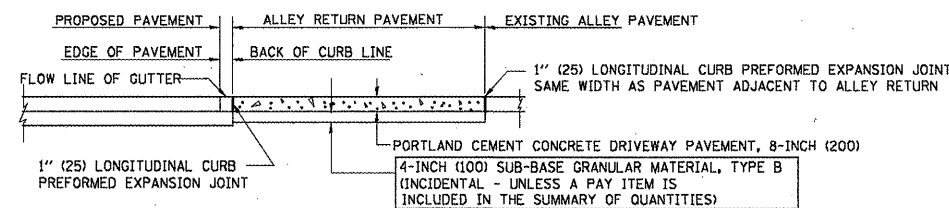
PORTLAND CEMENT CONCRETE SIDEWALK DETAILS

NOTES: NO EXTRA COMPENSATION SHALL BE ALLOWED FOR THE GUTTER FLARE



IF THE WIDTH OF THE ALLEY RETURN IS 16'-0" (4.8 m) OR MORE, A LONGITUDINAL JOINT SHALL BE PLACED IN THE ALLEY RETURN PAVEMENT.

WHEREVER THE ALLEY IS PAVED, CONSTRUCT A 1" (25) LONGITUDINAL CURB PREFORMED EXPANSION JOINT



SECTION A-A

ALLEY RETURN DETAIL

ALL DIMENSIONS ARE IN INCHES (MILLIMETERS) UNLESS OTHERWISE SHOWN

FILE NAME =
W:\dststd\22x34\bd17.dgn

USER NAME = geglianobt
PLOT SCALE = 58,0000' / IN.
PLOT DATE = 1/4/2008

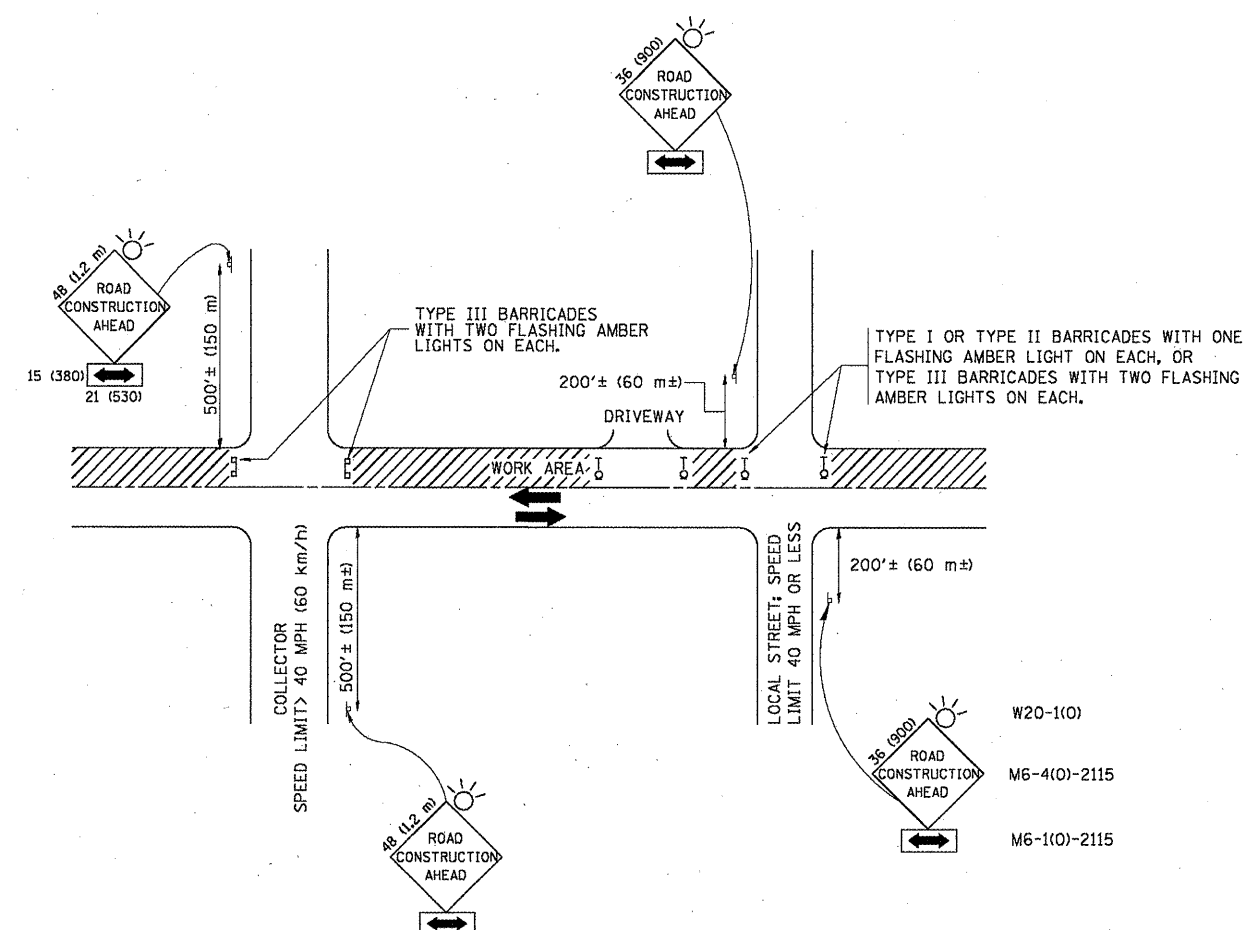
DESIGNED - M. DE YONG
DRAWN -
CHECKED -
DATE - 06-13-90

REVISED -
REVISED -
REVISED -
REVISED -

STATE OF ILLINOIS
DEPARTMENT OF TRANSPORTATION

CITY OF CHICAGO
DETAILS FOR P.C. CONCRETE DRIVEWAY, ALLEY RETURN AND SIDEWALK
SCALE: NONE SHEET NO. 1 OF 1 SHEETS STA. TO STA.

F.A. RTE. SECTION COUNTY TOTAL SHEETS SHEET NO.
VAR 2010-027-I Cook 19 17
BD400-03 (BD-17) CONTRACT NO. 60K63
FED. ROAD DIST. NO. 1 ILLINOIS FED. AID PROJECT



TRAFFIC CONTROL AND PROTECTION FOR SIDE ROADS, INTERSECTIONS, AND DRIVEWAYS

NOTES:

- A. FOR NO LANE RESTRICTION ON THE SIDE ROAD OR DRIVEWAYS:
 1. SIDE ROAD WITH A SPEED LIMIT OF 40 MPH (60 km/h) OR LESS AS SHOWN ON THE DRAWING AND AS DIRECTED BY THE ENGINEER:
 - a) ONE ROAD CONSTRUCTION AHEAD SIGN 36 x 36 (900x900) WITH A FLASHER AND FLAG MOUNTED ON IT APPROXIMATELY 200' (60 m) IN ADVANCE OF THE MAIN ROUTE.
 - b) THE CLOSED PORTION OF THE MAIN ROUTE SHALL BE PROTECTED BY BLOCKING WITH TYPE I, TYPE II OR TYPE III BARRICADES, 1/3 OF THE CROSS SECTION OF THE CLOSED PORTION.
 2. SIDE ROAD WITH A SPEED LIMIT GREATER THAN 40 MPH (60 km/h) AS SHOWN ON THE DRAWING AND AS DIRECTED BY THE ENGINEER:
 - a) ONE ROAD CONSTRUCTION AHEAD SIGN 48 x 48 (1.2 m x 1.2 m) WITH A FLASHER MOUNTED ON IT APPROXIMATELY 500' (150 m) IN ADVANCE OF THE MAIN ROUTE.
 - b) THE CLOSED PORTION OF THE MAIN ROUTE SHALL BE PROTECTED BY BLOCKING WITH TYPE III BARRICADES, 1/2 OF THE CROSS SECTION OF THE CLOSED PORTION.
- 3. WHEN THE SIDE ROAD LIES BETWEEN THE BEGINNING OF THE MAINLINE SIGNING AND THE WORK ZONE, A SINGLE HEADED ARROW (M6-1) SHALL BE USED IN LIEU OF THE DOUBLE HEADED ARROW (M6-4).

- B. FOR A LANE CLOSURE ON A SIDE ROAD OR DRIVEWAY:

USE APPLICABLE PORTIONS OF THE TYPICAL APPLICATION OF TRAFFIC CONTROL DEVICES (STD. 701501, STD. 701606 OR THE APPROPRIATE STANDARD). THE SPACING OF SIGNS AND BARRICADES SHALL BE ADJUSTED FOR FIELD CONDITIONS AS DIRECTED BY THE ENGINEER. THE DIRECTIONAL ARROW SHALL BE COVERED OR REMOVED WHEN NO LONGER CONSISTENT WITH THE SIDE ROAD LANE CLOSURE.
- C. ADVANCE WARNING SIGNS ARE TO BE OMITTED ON DRIVEWAY UNLESS OTHERWISE NOTED.
- D. THE TRAFFIC CONTROL AND PROTECTION FOR SIDE ROADS, INTERSECTIONS, AND DRIVEWAYS SHALL BE INCIDENTAL TO THE COST OF SPECIFIED TRAFFIC CONTROL STANDARDS OR ITEMS.

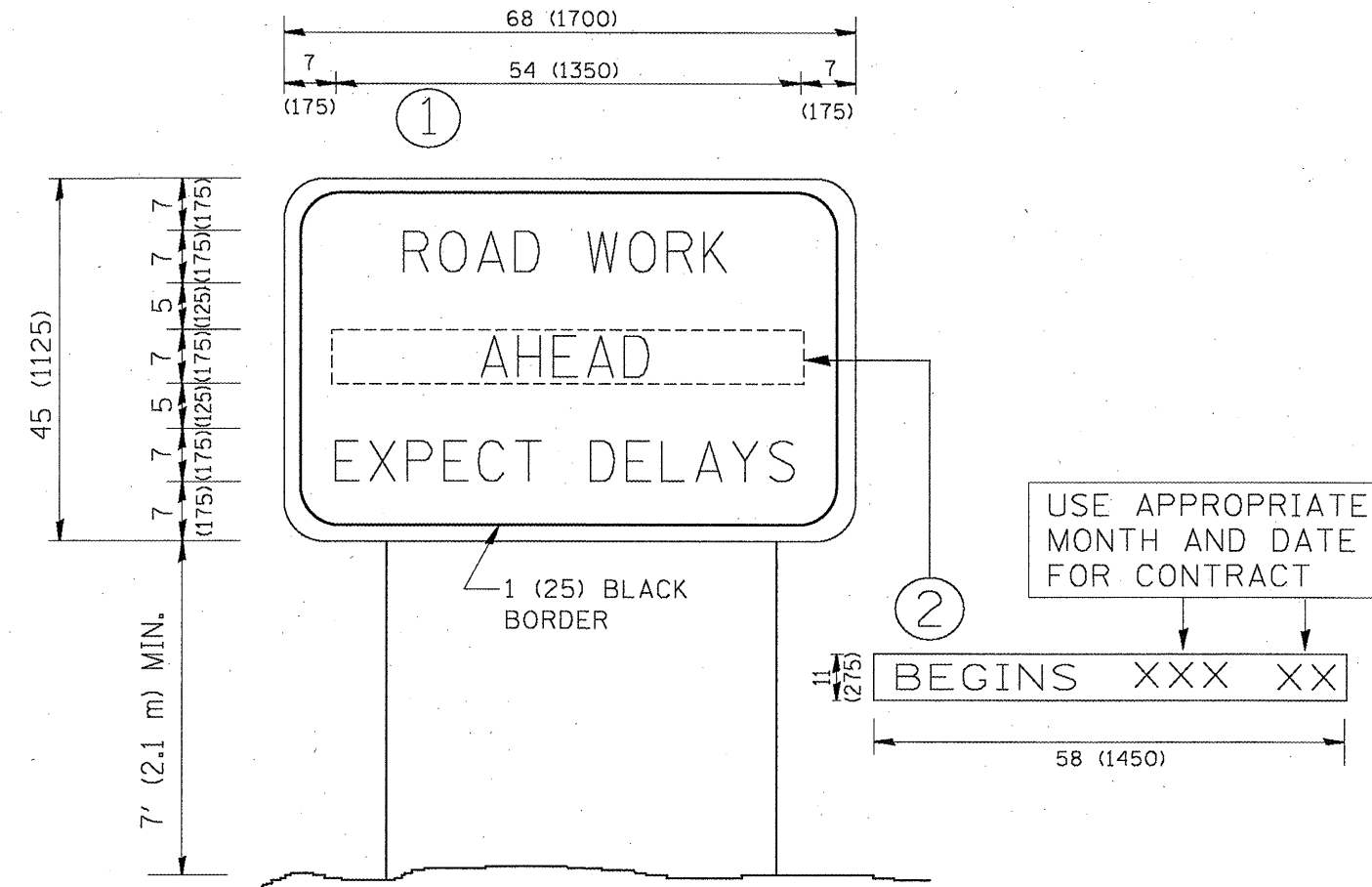
All dimensions are in millimeters (inches) unless otherwise shown.

FILE NAME =	USER NAME = gegljanobt	DESIGNED - LHA	REVISED - J. OBERLE 10-18-95
W:\dststd\22x34\tcl8.dgn		DRAWN -	REVISED - A. HOUSEH 03-06-96
		CHECKED -	REVISED - A. HOUSEH 10-15-96
		DATE - 06-89	REVISED - T. RAMMACHER 01-06-00

STATE OF ILLINOIS
DEPARTMENT OF TRANSPORTATION

TRAFFIC CONTROL AND PROTECTION FOR SIDE ROADS, INTERSECTIONS, AND DRIVEWAYS	
SCALE: NONE	SHEET NO. 1 OF 1 SHEETS STA. TO STA.

F.A. RTE.	SECTION	COUNTY	TOTAL SHEETS	SHEET NO.
VAR.	2010-027-I	COOK	19	18
TC-10		CONTRACT NO. 60K63		
FED. ROAD DIST. NO. 1 ILLINOIS FED. AID PROJECT				



NOTES:

1. USE BLACK LETTERING ON ORANGE BACKGROUND.
2. ERECT SIGNS IN ADVANCE OF THE LOCATION FOR THE "ROAD CONSTRUCTION AHEAD" SIGN AT LOCATIONS AS DIRECTED BY THE ENGINEER.
3. ERECT SIGN ① WITH INSTALLED PANEL ② ONE WEEK PRIOR TO THE START OF CONSTRUCTION.
4. REMOVE PANEL ② SOON AFTER THE START OF CONSTRUCTION.
5. SEE SPECIAL PROVISION FOR "TEMPORARY INFORMATION SIGNING" FOR ADDITIONAL INFORMATION.
6. ONE SIGN ASSEMBLY EQUALS 25.70 SQ. FT. (2.3 SQ. M.)
7. SHALL BE PAID FOR AS TEMPORARY INFORMATION SIGNING.

ALL DIMENSIONS ARE IN INCHES (MILLIMETERS) UNLESS OTHERWISE SHOWN.

FILE NAME = W:\state\22x34\ta22.dgn	USER NAME = geglienobt	DESIGNED -	REVISED - R. MIRS 09-15-97
		DRAWN -	REVISED - R. MIRS 12-11-97
		CHECKED -	REVISED - T. RAMMACHER 02-02-99
		DATE -	REVISED - C. JUCIUS 01-31-07

**STATE OF ILLINOIS
DEPARTMENT OF TRANSPORTATION**

**ARTERIAL ROAD
INFORMATION SIGN**

SCALE: NONE SHEET NO. 1 OF 1 SHEETS STA. TO STA.

F.A. RTE.	SECTION	COUNTY	TOTAL SHEETS	SHEET NO.
VAR	2010-027-I	Cook	19	19
TC-22		CONTRACT NO. 60K63		
FED. ROAD DIST. NO. 1 ILLINOIS FED. AID PROJECT				