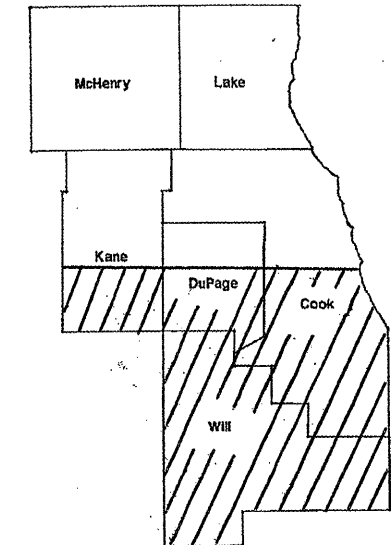


ROUTE	SECTION	COUNTY	TOTAL SHEETS	SHEET NUMBER
VARIOUS	2010-030DTR	VARIOUS	4	1

CONTRACT 60K70  
D-91-553-10

STATE OF ILLINOIS  
DEPARTMENT OF TRANSPORTATION  
DIVISION OF HIGHWAYS  
DISTRICT ONE  
**PROPOSED HIGHWAY PLANS**

ROUTE: VARIOUS SOUTH  
SECTION 2010-030DTR  
DEAD TREE REMOVAL  
VARIOUS COUNTIES  
C-91-553-10

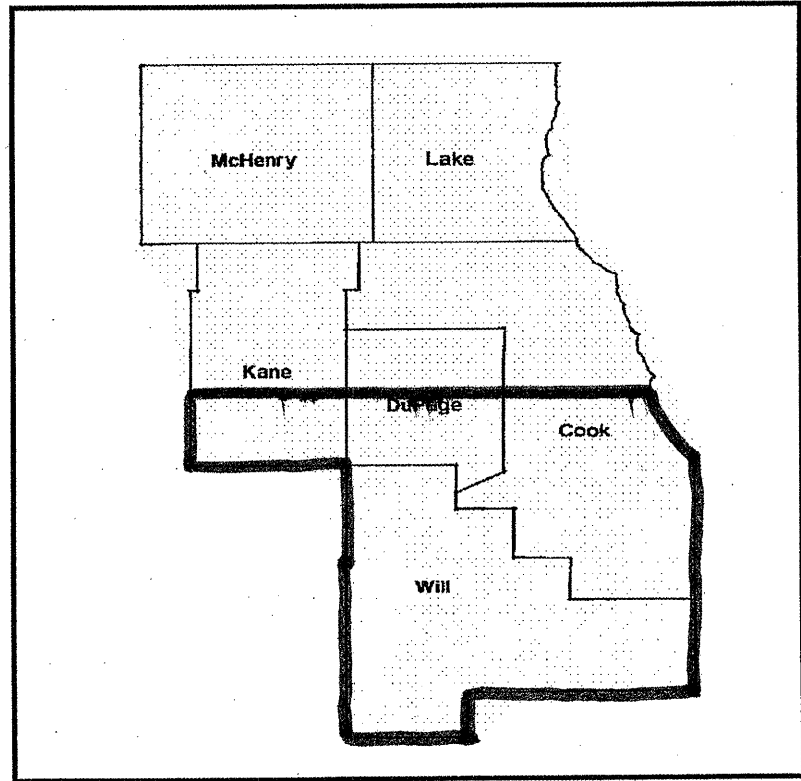


LOCATION OF IMPROVEMENT INDICATED THUS: 

**INDEX OF SHEETS**

- 1) COVER SHEET, INDEX OF SHEETS
- 2) SUMMARY OF QUANTITIES, STATE STANDARDS
- 3) SAMPLE WORK ORDER
- 4) TC-17 TRAFFIC CONTROL DETAIL FOR FREEWAY SHOULDER CLOSURES AND PARTIAL RAMP CLOSURES

**IMPROVEMENT IS IN VARIOUS LOCATIONS WITHIN DISTRICT ONE**



STATE OF ILLINOIS  
DEPARTMENT OF TRANSPORTATION  
DIVISION OF HIGHWAYS

SUBMITTED: APRIL 7 2010  
*Diane M. O'Keefe* DEPUTY DIRECTOR OF HIGHWAYS, REGION ENGINEER

May 7 2010  
*Scott E. Stitt* ENGINEER OF DESIGN AND ENVIRONMENT

May 7 2010  
*Christine M. Reed* DIRECTOR OF HIGHWAYS, CHIEF ENGINEER

**PRINTED BY THE AUTHORITY OF THE STATE OF ILLINOIS**

J.U.L.I.E.: JOINT UTILITY LOCATION INFORMATION FOR EXCAVATION  
(800) 892-0123 OR 811

DISTRICT ONE BUREAU OF MAINTENANCE: J. STUMPNER  
MAINTENANCE LANDSCAPE DESIGNER: R. WANNER / T. JACKSON (847) 705-4171

CONTRACT 60K70

<b>ROUTE</b>	<b>SECTION</b>	<b>COUNTY</b>	<b>TOTAL SHEETS</b>	<b>SHEET NUMBER</b>
VARIOUS	2010-030DTR	VARIOUS	4	2

CONTRACT 60K70

**SUMMARY OF QUANTITIES**

100% STATE  
Y004

<b>PAY ITEM</b>	<b>DESCRIPTION</b>	<b>UNIT</b>	<b>CONTRACT MAINT FUND</b>	<b>TOTAL</b>
20100110	TREE REMOVAL (6- 15 UNITS DIAMETER)	UNIT	3000	3000
20100210	TREE REMOVAL (OVER 15 UNITS DIAMETER)	UNIT	2000	2000
20101300	TREE PRUNING (1 TO 10 INCH DIAMETER)	EACH	50	50
20101350	TREE PRUNING (OVER 10 INCH DIAMETER)	EACH	50	50
67100100	MOBILIZATION	L SUM	1	1
K1003680	MULCH	SQ YD	2000	2000
X0322453	WEED CONTROL, PRE-EMERGENT	POUND	100	100
X0322856	WEED CONTROL, NON-SELECTIVE AND NON-RESIDUAL	GALLON	5	5
X0325222	WEED CONTROL, BASAL TREATMENT	GALLON	30	30
X2010100	TREE LIMB REMOVAL (4 TO 10 INCHES DIAMETER)	EACH	25	25
X2010200	TREE LIMB REMOVAL (OVER 10 INCHES DIAMETER)	EACH	25	25
X2010300	TREE REMOVAL (UNDER 6 UNITS DIAMETER)	UNIT	300	300
X2010400	STUMP REMOVAL ONLY	UNIT	50	50
Z0064800	SELECTIVE CLEARING	UNIT	75	75

**STATE STANDARDS**

701001      701006      701101      701106  
70120                      701301      701421  
701501                      701601      701901

ILLINOIS DEPARTMENT OF TRANSPORTATION  
SUMMARY OF QUANTITIES  
DEAD TREE REMOVAL

ROUTE	SECTION	COUNTY	TOTAL SHEETS	SHEET NUMBER
VARIOUS	2010-030DTR	VARIOUS	4	3

CONTRACT 60K70

ID: \_\_\_\_\_

### DEAD AND DISEASED TREE REMOVAL REQUEST

REQUESTED BY: \_\_\_\_\_ DATE OF REQUEST: \_\_\_\_\_

YARD: \_\_\_\_\_ TELEPHONE: (    ) \_\_\_\_\_

*(Please complete information when request for tree removal is from outside the Bureau of Maintenance)*

NAME: \_\_\_\_\_

ADDRESS: \_\_\_\_\_

TELEPHONE: (    ) \_\_\_\_\_

**LOCATION OF DEAD/DISEASED TREE(S)**  
*(Please fill out completely to expedite locating the repair)*

COUNTY: \_\_\_\_\_ TOWN/CITY: \_\_\_\_\_

MARKED/NAMED ROUTE: \_\_\_\_\_

DIRECTIONS FROM NEAREST MAJOR CROSS ROAD OR MAJOR LANDMARK: \_\_\_\_\_

\_\_\_\_\_

SIDE OF ROADWAY: \_\_\_\_\_

ADDITIONAL DIRECTIONS TO TREE: \_\_\_\_\_

\_\_\_\_\_

**PLEASE INDICATE APPROXIMATE SIZE AND NUMBER OF TREES BASED ON VISUAL ESTIMATE**

\_\_\_\_\_ (Size/Number)

COMMENTS: \_\_\_\_\_

---

OFFICE USE ONLY

DATE INSPECTED: \_\_\_\_\_ TYPE OF REMOVAL: \_\_\_\_\_

DTR #: \_\_\_\_\_

CONTRACT #: \_\_\_\_\_

WORK ORDER #: \_\_\_\_\_ NOTES: \_\_\_\_\_

POSTED IN SUMMARY: \_\_\_\_\_

**RETURN REQUESTS TO CONTRACTS SECTION**

s:\wpl\contracts\forms\gr60110e.doc

1A 08 08

ILLINOIS DEPARTMENT OF TRANSPORTATION

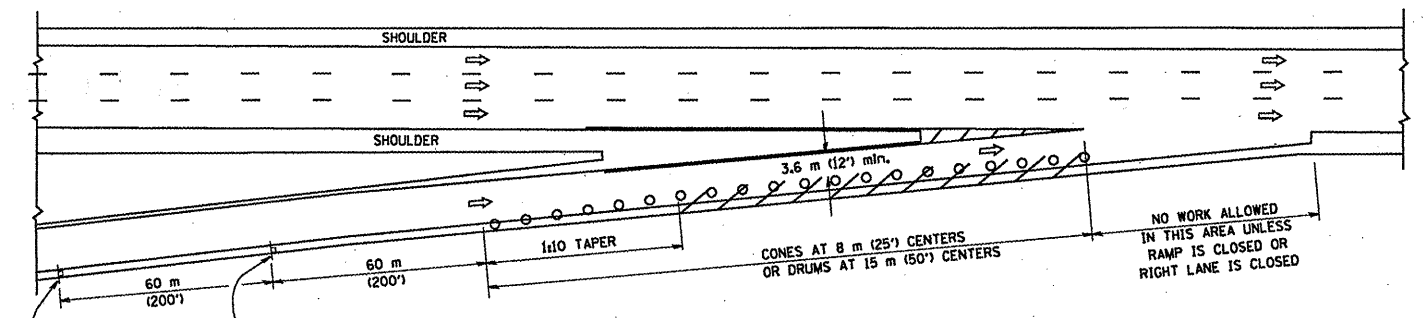
SAMPLE WORK ORDER

DEAD TREE REMOVAL

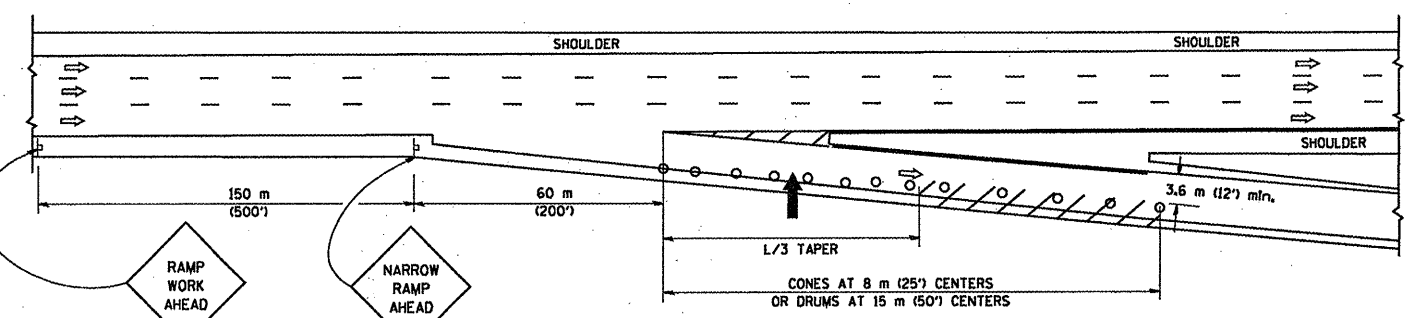
PARTIAL RAMP CLOSURE DETAILS

SHOULDER CLOSURE DETAILS

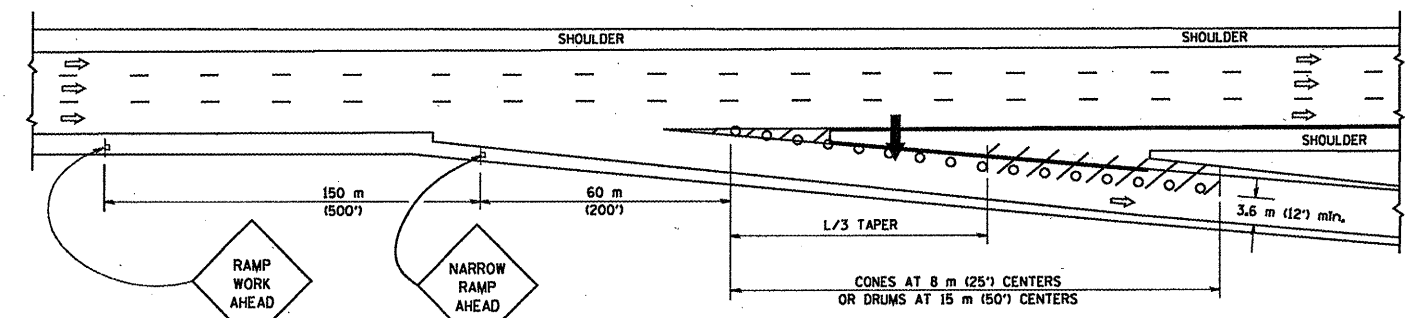
F.A. RTE.	SECTION	COUNTY	TOTAL SHEETS	SHEET NO.
200-030	VAR	4	4	4
STA.	DTR TO STA.			
FED. ROAD DIST. NO.	ILLINOIS	FED. AID PROJECT		



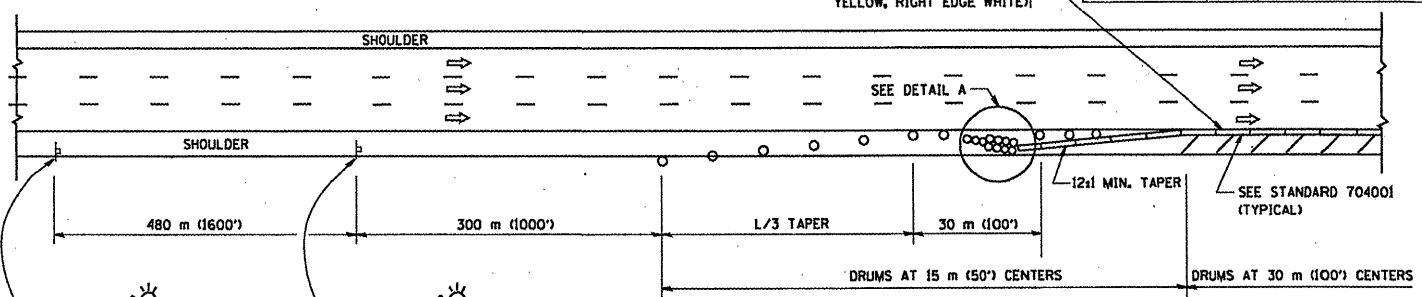
TYPICAL ENTRANCE RAMP



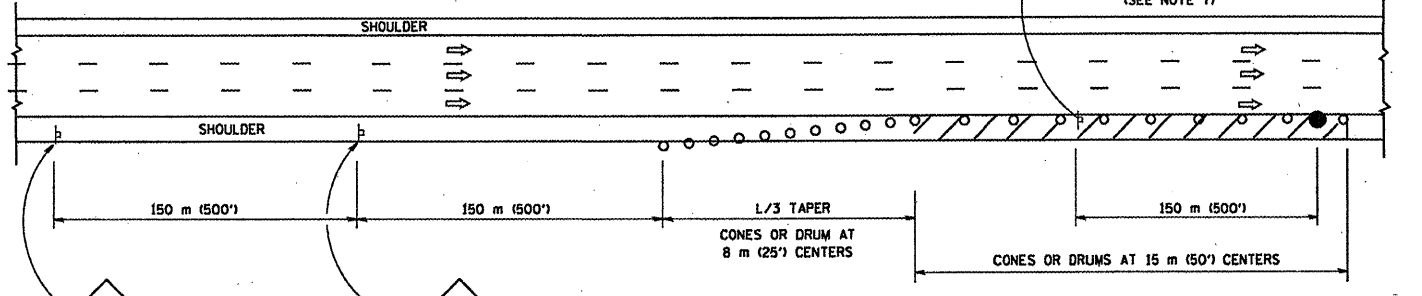
TYPICAL EXIT RAMP



TYPICAL EXIT RAMP



PERMANENT SHOULDER CLOSURE



DAYTIME SHOULDER CLOSURE

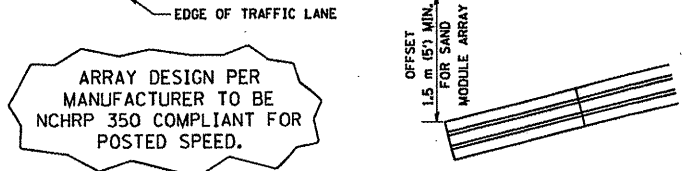
THIS DETAIL IS USED WHERE:  
 1. VEHICLES, EQUIPMENT, WORKERS OR THEIR ACTIVITIES ENCROACH IN AN AREA CLOSER THAN 4.5 m (15') TO THE EDGE OF PAVEMENT FOR A PERIOD IN EXCESS OF 15 MINUTES.

SYMBOLS

- ARROWBOARD
- WORK AREA
- SIGN ON PORTABLE OR PERMANENT SUPPORT
- FLAGGER WITH CONTROL SIGN
- DRUM WITH MONO-DIRECTIONAL STEADY BURNING LIGHT
- CONES - 700 (28) IN HEIGHT

GENERAL NOTES

1. THE "L" DISTANCE EQUALS:  
 SPEED LIMIT FORMULAS  
 80 km/h (45 mph) METRIC ENGLISH  
 OR GREATER: L=0.65(W)(S) L=(W)(S)  
 W = WIDTH OF OFFSET IN METERS (FEET)  
 S = NORMAL POSTED SPEED KM/H (MPH)
2. PLASTIC DRUMS WITH HIGH PERFORMANCE REFLECTIVE SHEETING AND STEADY BURNING LIGHTS ARE REQUIRED FOR ALL NIGHTTIME CLOSURES.
3. ALL SIGNS SHALL BE POST MOUNTED IF THE CLOSURE TIME EXCEEDS FOUR DAYS.
4. FLASHING LIGHTS SHALL BE USED DURING THE HOURS OF DARKNESS AND SHALL BE INSTALLED ABOVE THE FIRST TWO SETS OF SIGNS.
5. THE IMPACT ATTENUATOR, TEMPORARY IS NOT REQUIRED WHEN THE TEMPORARY CONCRETE BARRIER WALL IS PROTECTED BY OR IS TIED INTO THE EXISTING GUARDRAIL. IF OFFSET IS LESS THAN 5 FEET USE "TRAFFIC BARRIER TERMINAL, TYPE III, TEMPORARY" DEVICE TO MEET NCHRP350 FOR POSTED SPEED.
6. AUTHORIZATION FROM THE DISTRICT'S BUREAU OF TRAFFIC IS REQUIRED FOR ALL FREEWAY CLOSURES.
7. THE FLAGGER AND FLAGGER SIGN ARE REQUIRED AT THE ABOVE WORK SITES WHEN:
  - a. FOUR OR MORE WORK VEHICLES ENTER THE TRAFFIC LANES IN A ONE HOUR PERIOD.
  - b. THE WORK ACTIVITY REQUIRES FREQUENT ENCROACHMENT INTO THE LANE OPEN TO TRAFFIC.
 THE FLAGGER SHALL BE STATIONED APPROXIMATELY 30 m (100') TO 60 m (200') IN ADVANCE OF THE WORKERS.



ARRAY DESIGN PER MANUFACTURER TO BE NCHRP 350 COMPLIANT FOR POSTED SPEED.

DETAIL "A"  
 IMPACT ATTENUATOR, TEMPORARY  
 (SEE NOTE 5)

ALL DIMENSIONS ARE IN MILLIMETERS (INCHES) UNLESS OTHERWISE SHOWN.

REVISIONS	
NAME	DATE
DWS	11/95
JAF	12/02
NCHRP 350	04/03
JAF	2/06

ILLINOIS DEPARTMENT OF TRANSPORTATION  
**TRAFFIC CONTROL DETAILS  
 FOR FREEWAY  
 SHOULDER CLOSURES  
 PARTIAL RAMP CLOSURES**  
 DESIGNED BY: DWS  
 DRAWN BY:  
 CHECKED BY:  
 TC-17  
 REVISION DATE: 02/28/06

PLOT DATE: 3/1/2006  
 FILE NAME: K:\projects\03-23-95\17.dgn  
 PLOT SCALE: 1/8" = 1'-0"  
 USER NAME: jaf