

| ROUTE | SECTION | COUNTY | TOTAL SHEETS | SHEET NUMBER |
|---------|-------------|--------|--------------|--------------|
| VARIOUS | 2010-037 RS | WILL | 5 | 1 |

CONTRACT NO.: 60K93

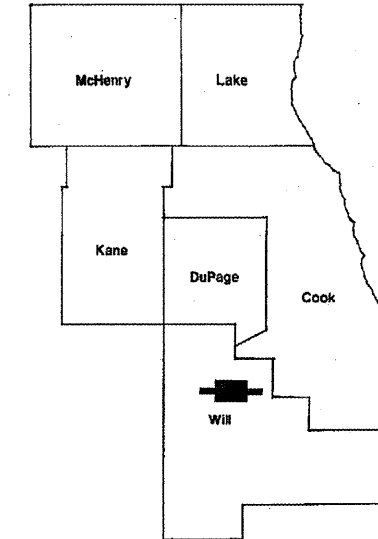
D-91-621-10

FOR INDEX OF SHEETS SEE SHEET 2

STATE OF ILLINOIS
DEPARTMENT OF TRANSPORTATION
DIVISION OF HIGHWAYS
DISTRICT ONE

PROPOSED HIGHWAY PLANS

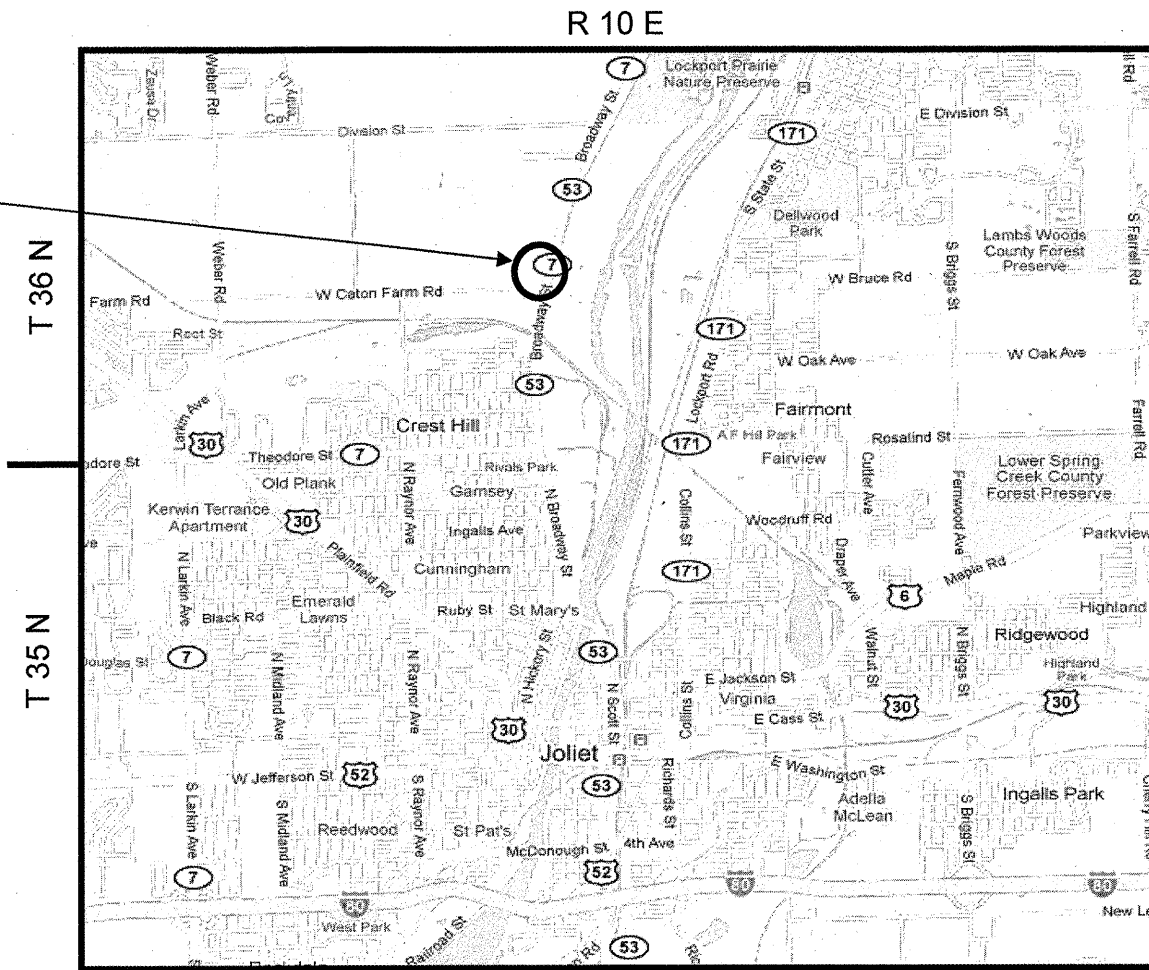
ROUTE: VARIOUS
JOLIET MAINTENANCE YARD
SECTION: 2010-037 RS
MAINTENANCE PARKING LOT PAVING
WILL COUNTY
C-91-621-10



IMPROVEMENT IS LOCATED IN THE
CITY OF LOCKPORT

IMPROVEMENT LOCATION:
JOLIET MAINTENANCE YARD

LOCATION OF IMPROVEMENT INDICATED THUS:



DISTRICT ONE - PLAN PREPARATION ENGINEER:
KEN ENG/ R. BORO (847) 705-4178

CONTRACT NO. 60K93

STATE OF ILLINOIS
DEPARTMENT OF TRANSPORTATION
DIVISION OF HIGHWAYS

SUBMITTED: April 15, 2010
Diana M. O'Keefe
DEPUTY DIRECTOR OF HIGHWAYS, REGION ENGINEER

May 7, 2010
Scott E. Stitt, P.E.
acting ENGINEER OF DESIGN AND ENVIRONMENT

May 7, 2010
Christine M. Reeder
DIRECTOR OF HIGHWAYS, CHIEF ENGINEER

PRINTED BY THE AUTHORITY
OF THE STATE OF ILLINOIS

J.U.L.I.E.
JOINT UTILITY LOCATION INFORMATION FOR
EXCAVATION: (800) 892-0123 OR 811

| ROUTE | SECTION | COUNTY | TOTAL SHEETS | SHEET NUMBER |
|---------|-------------|--------|--------------|--------------|
| VARIOUS | 2010-037 RS | WILL | 5 | 2 |

CONTRACT NO.: 60K93

INDEX OF SHEETS

1. TITLE SHEET
2. INDEX OF SHEETS, STATE STANDARDS, GENERAL NOTES AND MIXTURE REQUIREMENTS
3. SUMMARY OF QUANTITIES
4. JOLIET MAINTENANCE YARD PLAN
5. PAVEMENT PATCHING FOR HMA SURFACED PAVEMENT

GENERAL NOTES

BEFORE STARTING ANY EXCAVATION, THE CONTRACTOR SHALL CALL "J.U.L.I.E." AT (800) 892-0123 OR 811 FOR FIELD LOCATIONS OF BURIED ELECTRIC, TELEPHONE AND GAS UTILITIES. (48 HOUR NOTIFICATION IS REQUIRED).

THE CONTRACTOR SHALL COORDINATE CONSTRUCTION ACTIVITIES WITH THE JOLIET MAINTENANCE YARD TECHNICIAN FRANK KLUPSHAS AT 815-722-6652.

NO HEAVY EQUIPMENT SHALL BE ALLOWED ON MILLED OR WORK ZONE AREA..

THE CONTRACTOR WILL NOT BE ALLOWED TO SET UP A YARD OR FIELD OFFICE ON STATE PROPERTY WITHOUT WRITTEN PERMISSION FROM THE DEPARTMENT.

THESE PLANS HAVE BEEN PREPARED FROM NOTES RECEIVED FROM BUREAU OF MAINTENANCE.

DO NOT SCALE PLANS FOR CONSTRUCTION DIMENSIONS.

IT SHALL BE THE CONTRACTOR'S RESPONSIBILITY TO VERIFY ALL DIMENSIONS AND CONDITIONS EXISTING IN THE FIELD PRIOR TO CONSTRUCTION AND ORDERING OF MATERIALS.

ALL PAVEMENT PATCHING LOCATIONS WILL BE DETERMINED IN THE FIELD BY THE ENGINEER.

THE CONTRACTOR SHALL BE REQUIRED TO PROVIDE ACCESS TO ABUTTING PROPERTY AT ALL TIMES DURING THE CONSTRUCTION OF THIS PROJECT.

HMA MIXTURE REQUIREMENTS

| MIXTURE TYPE | AIR VOIDS @ Ndes |
|--|------------------|
| PAVEMENT RESURFACING | |
| HOT-MIX ASPHALT SURFACE COURSE, MIX "D", N70 (IL 9.5 mm) | 4% @ 70 GYR. |
| LEVELING BINDER (MACHINE METHOD), N70 (IL 9.5 mm) | 4% @ 70 GYR. |
| PATCHING | |
| CLASS D PATCHES (HMA BINDER IL-19 mm) | 4% @ 70 GYR. |

- THE UNIT WEIGHT USED TO CALCULATE HOT-MIX ASPHALT SURFACE MIXTURES IS 112 LBS/SQ YD/IN.
- THE AC TYPE FOR POLYMERIZED HMA MIXES SHALL BE SBS/SBR PG 70-22 AND FOR NON-POLYMERIZED HMA THE AC TYPE SHALL BE PG 64-22 UNLESS MODIFIED BY DISTRICT ON SPECIAL PROVISIONS. FOR "PERCENT OF RAP" SEE DISTRICT ONE SPECIAL PROVISIONS.

ILLINOIS DEPARTMENT OF TRANSPORTATION
**INDEX OF SHEETS
STATE STANDARDS
GENERAL NOTES**

URBAN
100% STATE

| ROUTE | SECTION | COUNTY | TOTAL SHEETS | SHEET NUMBER |
|---------|-------------|--------|--------------|--------------|
| VARIOUS | 2010-037 RS | WILL | 5 | 3 |

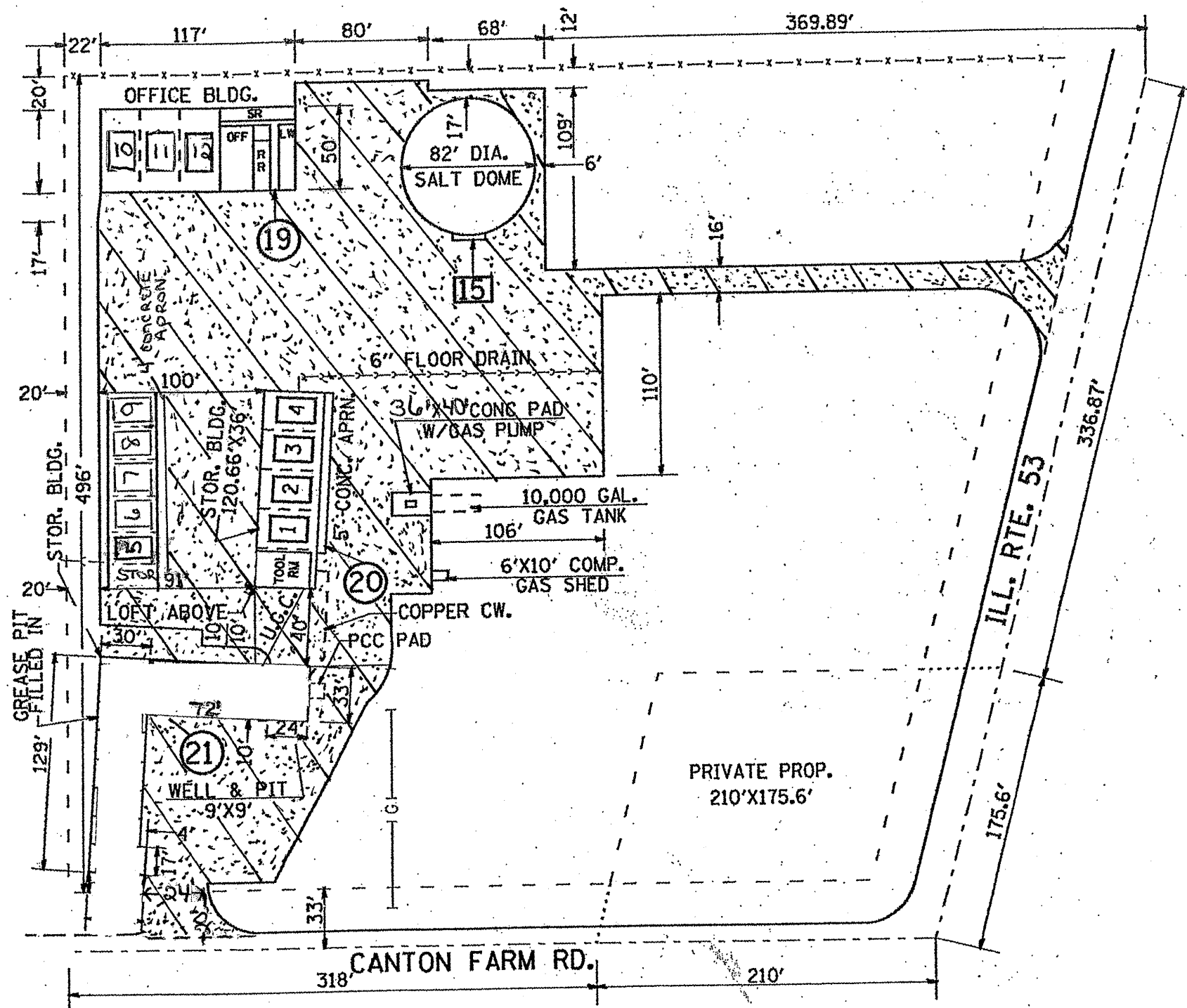
CONTRACT NO.: 60K93

| CONSTRUCTION CODE TYPE: I000 | | WILL CO. | |
|------------------------------|---|----------|------------------|
| CODE NO. | ITEMS | UNITS | TOTAL QUANTITIES |
| 40600200 | BITUMINOUS MATERIALS (PRIME COAT) | TON | 3.5 |
| 40600300 | AGGREGATE (PRIME COAT) | TON | 17.7 |
| 40600400 | MIXTURE FOR CRACK, JOINTS, AND FLANGEWAYS | TON | 6.6 |
| 40600635 | LEVELING BINDER (MACHINE METHOD), N70 | TON | 186 |
| 40603340 | HOT-MIX ASPHALT SURFACE COURSE, MIX "D", N70 | TON | 371 |
| 44000158 | HOT-MIX ASPHALT SURFACE REMOVAL, 2 1/4" | SQ YD | 4416 |
| 44201692 | CLASS D PATCHES, TYPE II, 4 INCH | SQ YD | 100 |
| 67100100 | MOBILIZATION | L SUM | 1 |

ILLINOIS DEPARTMENT OF TRANSPORTATION

SUMMARY OF QUANTITIES

| ROUTE | SECTION | COUNTY | TOTAL SHEETS | SHEET NUMBER |
|---------|-------------|--------|--------------|--------------|
| VARIOUS | 2010-037 RS | WILL | 5 | 4 |



LEGEND



2 1/4" HMA SURFACE REMOVAL
 1 1/2" HMA SURFACE COURSE, MIX "D", N70
 3/4" LEVELING BINDER (MM), N70

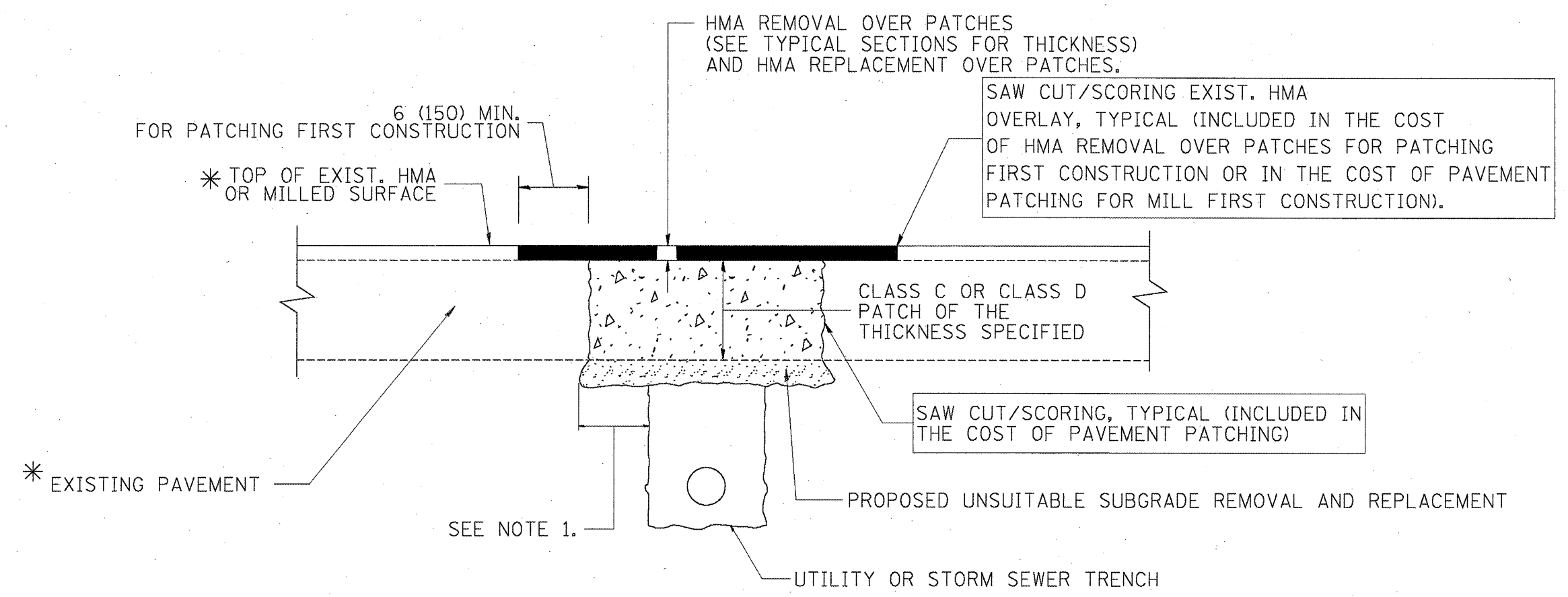
NOTE:

CONTRACTOR SHALL MILL FIRST BEFORE PATCHING

ILLINOIS DEPARTMENT OF
 TRANSPORTATION

 JOLIET MAINTENANCE YARD

| | | | | |
|-----------------------|------------|----------|------------------|-----------|
| F.A. RTE. | SECTION | COUNTY | TOTAL SHEETS | SHEET NO. |
| 101 | 2010-037RS | WILL | 5 | 5 |
| STA. | TO STA. | | | |
| FED. ROAD DIST. NO. 1 | | ILLINOIS | FED. AID PROJECT | |



* SEE TYPICAL SECTIONS FOR THICKNESS AND MATERIALS

NOTES:

1. THE WIDTH OF THE FULL DEPTH PATCH OVER A TRENCH SHALL BE 12 (300) WIDER ON EACH SIDE OF THE TRENCH.
2. FOR METHOD OF MEASUREMENT AND BASIS OF PAYMENT, SEE RECURRING SPECIAL PROVISION "PATCHING WITH HOT-MIX ASPHALT OVERLAY REMOVAL".

SEQUENCE OF CONSTRUCTION (PATCHING FIRST)

1. REMOVE THE EXISTING HMA MATERIAL OVER THE AREA TO BE PATCHED.
2. REMOVE AND REPLACE WITH CLASS C OR D PATCH.
3. REPLACE HMA MATERIAL OVER THE AREA TO BE PATCHED.

SEQUENCE OF CONSTRUCTION (MILLING FIRST)

1. MILL HMA FIRST IF THERE IS AT LEAST 4 1/2 INCHES OR MORE OF HMA MATERIAL ON TOP OF THE EXISTING PAVEMENT OR IF THE PAVEMENT IS FULL DEPTH HMA. A MINIMUM OF 2 INCHES OF HMA MATERIAL SHALL BE IN PLACE AFTER MILLING.
2. REMOVE AND REPLACE WITH FULL DEPTH CLASS D PATCHES TO TOP OF MILLED SURFACE.

ALL DIMENSIONS ARE IN INCHES (MILLIMETERS) UNLESS OTHERWISE SHOWN.

| REVISIONS | |
|-----------|----------|
| NAME | DATE |
| R. SHAH | 01/14/95 |
| R. SHAH | 03/23/95 |
| R. SHAH | 04/24/95 |
| A. HOUSEH | 03/15/96 |
| A. ABBAS | 03/21/97 |
| A. ABBAS | 01/20/98 |
| ART ABBAS | 04/27/98 |
| R. BORO | 01/01/07 |
| R. BORO | 09/04/07 |
| K. ENG | 10/27/08 |

ILLINOIS DEPARTMENT OF TRANSPORTATION

PAVEMENT PATCHING FOR HMA SURFACED PAVEMENT

SCALE: VERT. NONE
HORIZ. NONE

DRAWN BY
CHECKED BY

BD400-04 (BD-22)

PLOT DATE = 10/27/2008
 PLOT SCALE = 3/8" = 1'-0"
 USER NAME = bboard