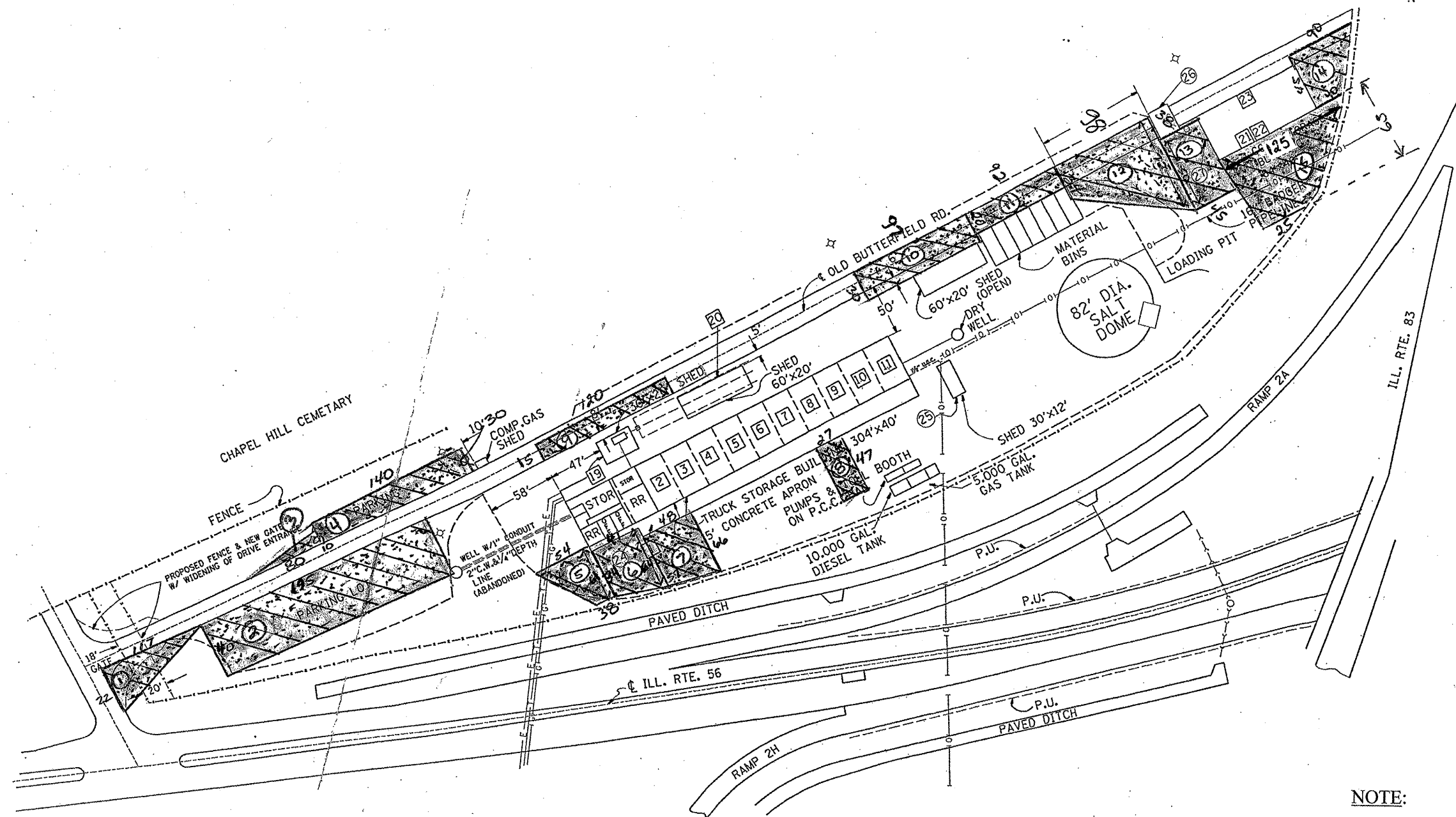


ROUTE	SECTION	COUNTY	TOTAL SHEETS	SHEET NUMBER
VARIOUS	2010-038 RS	COOK & DuPAGE	6	4



NOTE:
CONTRACTOR SHALL MILL FIRST BEFORE PATCHING

LEGEND

- 2 1/4" HMA SURFACE REMOVAL
- 1 1/2" HMA SURFACE COURSE, MIX "D", N70
- 3/4" LEVELING BINDER (MM), N70

ILLINOIS DEPARTMENT OF
TRANSPORTATION

OAKBROOK TEAM SECTION