

ROUTE	SECTION	COUNTY	TOTAL SHEETS	SHEET NUMBER
VARIOUS	2010-038 RS	COOK & DuPAGE	6	1

CONTRACT NO.: 60K94

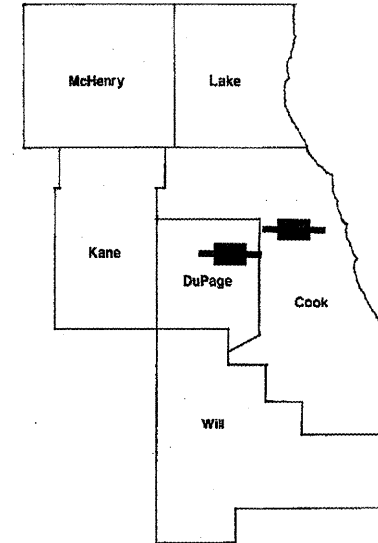
D-91-622-10

FOR INDEX OF SHEETS SEE SHEET 2

STATE OF ILLINOIS  
DEPARTMENT OF TRANSPORTATION  
DIVISION OF HIGHWAYS  
DISTRICT ONE

**PROPOSED HIGHWAY PLANS**

ROUTE: VARIOUS  
OAKBROOK TEAM SECTION & NORTHSIDE TEAM SECTION  
SECTION: 2010-038 RS  
MAINTENANCE PARKING LOT PAVING  
COOK & DuPAGE COUNTY  
C-91-622-10

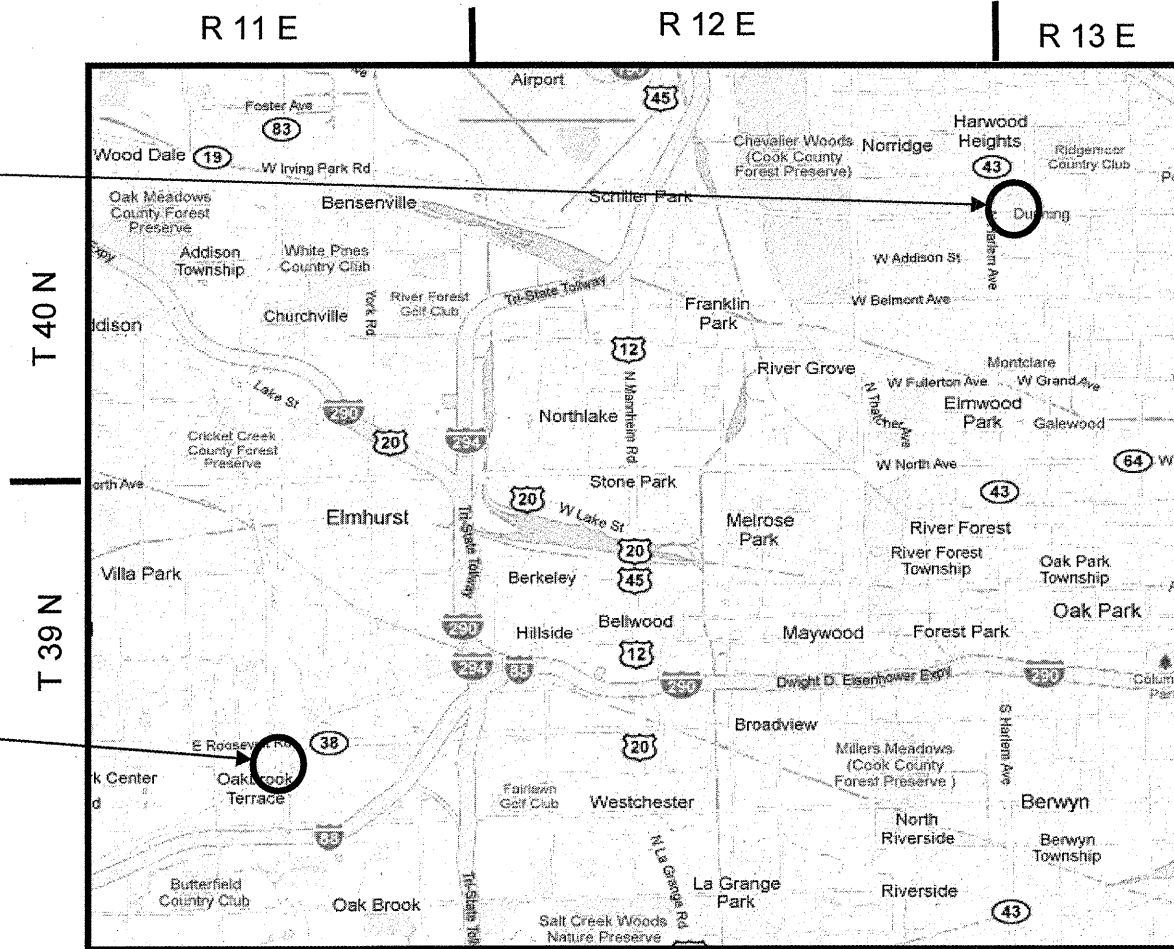


LOCATION OF IMPROVEMENT INDICATED THUS:

IMPROVEMENT IS LOCATED IN THE  
VILLAGE OF VILLA PARK AND THE  
CITY OF CHICAGO

IMPROVEMENT LOCATION:  
NORTHSIDE TEAM SECTION

IMPROVEMENT LOCATION:  
OAKBROOK TEAM SECTION



DISTRICT ONE - PLAN PREPARATION ENGINEER:  
KEN ENG/R. BORO (847) 705-4178

CONTRACT NO. 60K94

NORWOOD PARK & YORK  
TOWNSHIP

STATE OF ILLINOIS  
DEPARTMENT OF TRANSPORTATION  
DIVISION OF HIGHWAYS  
SUBMITTED: APRIL 15, 2010  
*Diana M. O'Keefe*  
DEPUTY DIRECTOR OF HIGHWAYS, REGION ENGINEER  
May 7 2010  
*Scott E. Stett* P.E.  
acting ENGINEER OF DESIGN AND ENVIRONMENT  
May 7 2010  
*Christine M. Reeder*  
DIRECTOR OF HIGHWAYS, CHIEF ENGINEER

PRINTED BY THE AUTHORITY  
OF THE STATE OF ILLINOIS

J.U.L.I.E.  
JOINT UTILITY LOCATION INFORMATION FOR  
EXCAVATION: (800) 892-0123 OR 811

C.U.A.N.  
CHICAGO UTILITY ALERT NETWORK  
(312) 744-7000

ROUTE	SECTION	COUNTY	TOTAL SHEETS	SHEET NUMBER
VARIOUS	2010-038 RS	COOK & DuPAGE	6	2

CONTRACT NO.: 60K94

**INDEX OF SHEETS**

1. TITLE SHEET
2. INDEX OF SHEETS AND GENERAL NOTES
3. SUMMARY OF QUANTITIES
4. OAKBROOK TEAM SECTION PLAN
5. NORTHSIDE TEAM SECTION PLAN
6. PAVEMENT PATCHING FOR HMA SURFACED PAVEMENT

**HMA MIXTURE REQUIREMENTS**

MIXTURE TYPE	AIR VOIDS @ Ndes
<b>PAVEMENT RESURFACING</b>	
HOT-MIX ASPHALT SURFACE COURSE, MIX "D", N70 (IL 9.5 mm)	4% @ 70 GYR.
LEVELING BINDER (MACHINE METHOD), N70 (IL-9.5 mm)	4% @ 70 GYR.
<b>FULL DEPTH PAVEMENT</b>	
HOT-MIX ASPHALT SURFACE COURSE, MIX "D", N70 (IL 9.5 mm); 1 1/2"	4% @ 70 GYR.
HOT-MIX ASPHALT BINDER COURSE, IL-19.0, N70; 4 1/2" (2 LIFTS)	4% @ 70 GYR.
<b>PATCHING</b>	
CLASS D PATCHES (HMA BINDER IL-19 mm)	4% @ 70 GYR.

- THE UNIT WEIGHT USED TO CALCULATE HOT-MIX ASPHALT SURFACE MIXTURES IS 112 LBS/SQ YD/IN.
- THE AC TYPE FOR POLYMERIZED HMA MIXES SHALL BE SBS/SBR PG 70-22 AND FOR NON-POLYMERIZED HMA THE AC TYPE SHALL BE PG 64-22 UNLESS MODIFIED BY DISTRICT ON SPECIAL PROVISIONS. FOR "PERCENT OF RAP" SEE DISTRICT ONE SPECIAL PROVISIONS.

**GENERAL NOTES**

BEFORE STARTING ANY EXCAVATION, THE CONTRACTOR SHALL CALL "J.U.L.I.E." AT (800) 892-0123 OR 811 OR C.U.A.N. AT (312) 744-7000 FOR FIELD LOCATIONS OF BURIED ELECTRIC, TELEPHONE AND GAS UTILITIES. (48 HOUR NOTIFICATION IS REQUIRED).

THE CONTRACTOR SHALL COORDINATE CONSTRUCTION ACTIVITIES WITH THE OAKBROOK TEAM SECTION TECHNICIAN DAN SCANDIFF AT 630-832-7330 AND THE NORTHSIDE TEAM SECTION TECHNICIAN TOM JUDKINS AT 773-545-6602 FOR WORK TO BE DONE AT THE RESPECTIVE YARD.

NO HEAVY EQUIPEMENT SHALL BE ALLOWED ON MILLED OR WORK ZONE AREA..

THE CONTRACTOR WILL NOT BE ALLOWED TO SET UP A YARD OR FIELD OFFICE ON STATE PROPERTY WITHOUT WRITTEN PERMISSION FROM THE DEPARTMENT.

THESE PLANS HAVE BEEN PREPARED FROM NOTES RECEIVED FROM BUREAU OF MAINTENANCE.

DO NOT SCALE PLANS FOR CONSTRUCTION DIMENSIONS.

IT SHALL BE THE CONTRACTOR'S RESPONSIBILITY TO VERIFY ALL DIMENSIONS AND CONDITIONS EXISTING IN THE FIELD PRIOR TO CONSTRUCTION AND ORDERING OF MATERIALS.

ALL PAVEMENT PATCHING LOCATIONS WILL BE DETERMINED IN THE FIELD BY THE ENGINEER.

THE CONTRACTOR SHALL BE REQUIRED TO PROVIDE ACCESS TO ABUTTING PROPERTY AT ALL TIMES DURING THE CONSTRUCTION OF THIS PROJECT.

ILLINOIS DEPARTMENT OF TRANSPORTATION

INDEX OF SHEETS  
STATE STANDARDS  
GENERAL NOTES

ROUTE	SECTION	COUNTY	TOTAL SHEETS	SHEET NUMBER
Various	2010-038 RS	Cook & DuPage	6	3

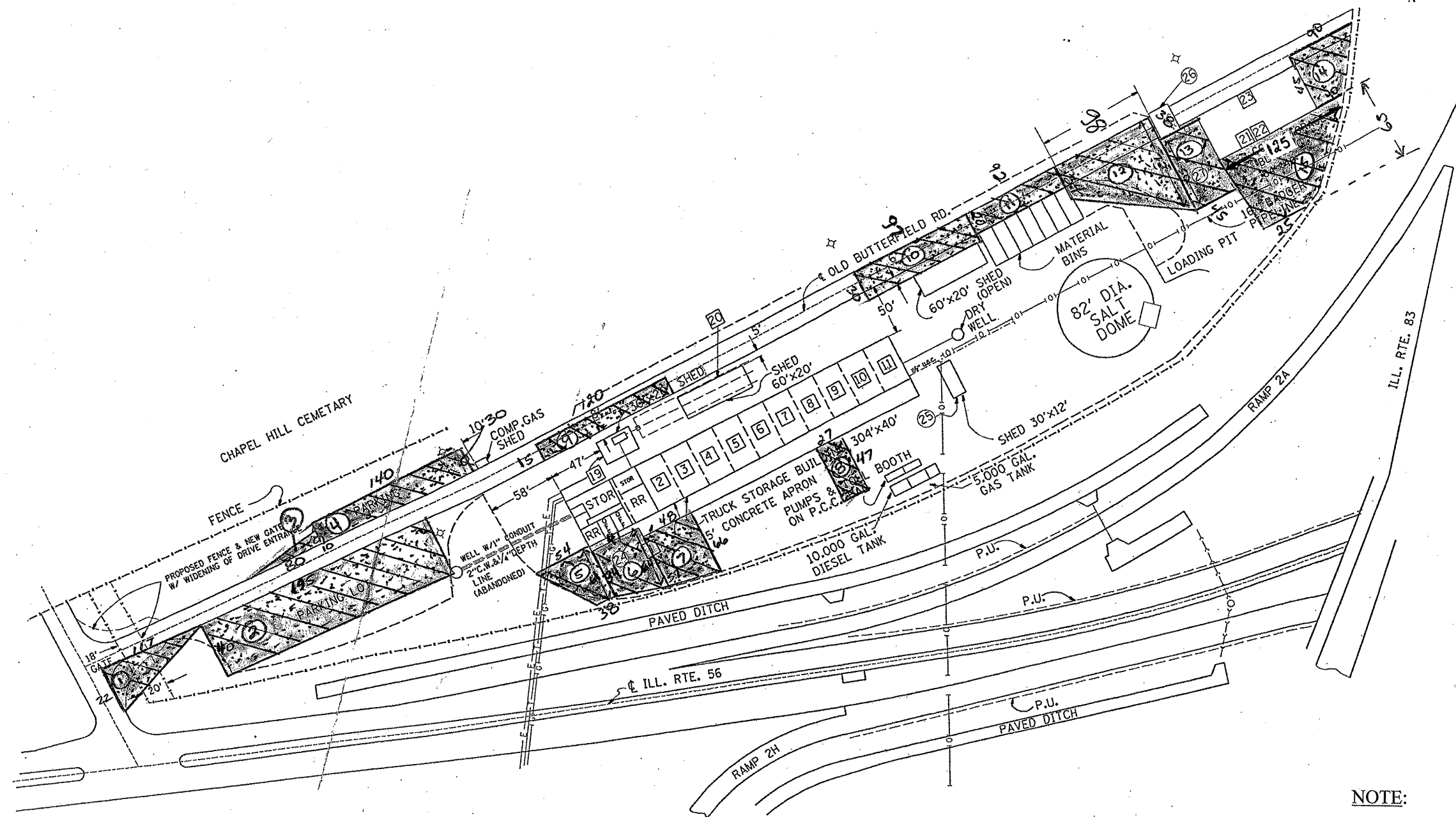
CONTRACT NO.: 60K94

SUMMARY OF QUANTITIES		CONSTRUCTION TYPE CODE: 1000			
CODE NO.	ITEMS	UNITS	TOTAL QUANTITIES	COOK CO	DUPAGE CO
28000510	INLET FILTERS	EACH	5	5	
40600200	BITUMINOUS MATERIALS (PRIME COAT)	TON	12.5	8.5	4
40600300	AGGREGATE (PRIME COAT)	TON	61	41	20
40600400	MIXTURE FOR CRACKS, JOINTS, AND FLANGEWAYS	TON	10	2	8
40600635	LEVELING BINDER (MACHINE METHOD),N70	TON	254	38	216
40603340	HOT-MIX ASPHALT SURFACE COURSE, MIX "D", N70	TON	504	75	429
40701801	HOT-MIX ASPHALT PAVEMENT (FULL-DEPTH), 6"	SQ YD	9435	9435	
44000158	HOT-MIX ASPHALT SURFACE REMOVAL, 2 1/4"	SQ YD	5998	890	5108
44201692	CLASS D PATCHES, TYPE II, 4 INCH	SQ YD	110	10	100
67100100	MOBILIZATION	L SUM	1	0.5	0.5
Z0018400	DRAINAGE STRUCTURES TO BE ADJUSTED	EACH	13	13	

ILLINOIS DEPARTMENT OF TRANSPORTATION

SUMMARY OF QUANTITIES

ROUTE	SECTION	COUNTY	TOTAL SHEETS	SHEET NUMBER
VARIOUS	2010-038 RS	COOK & DuPAGE	6	4



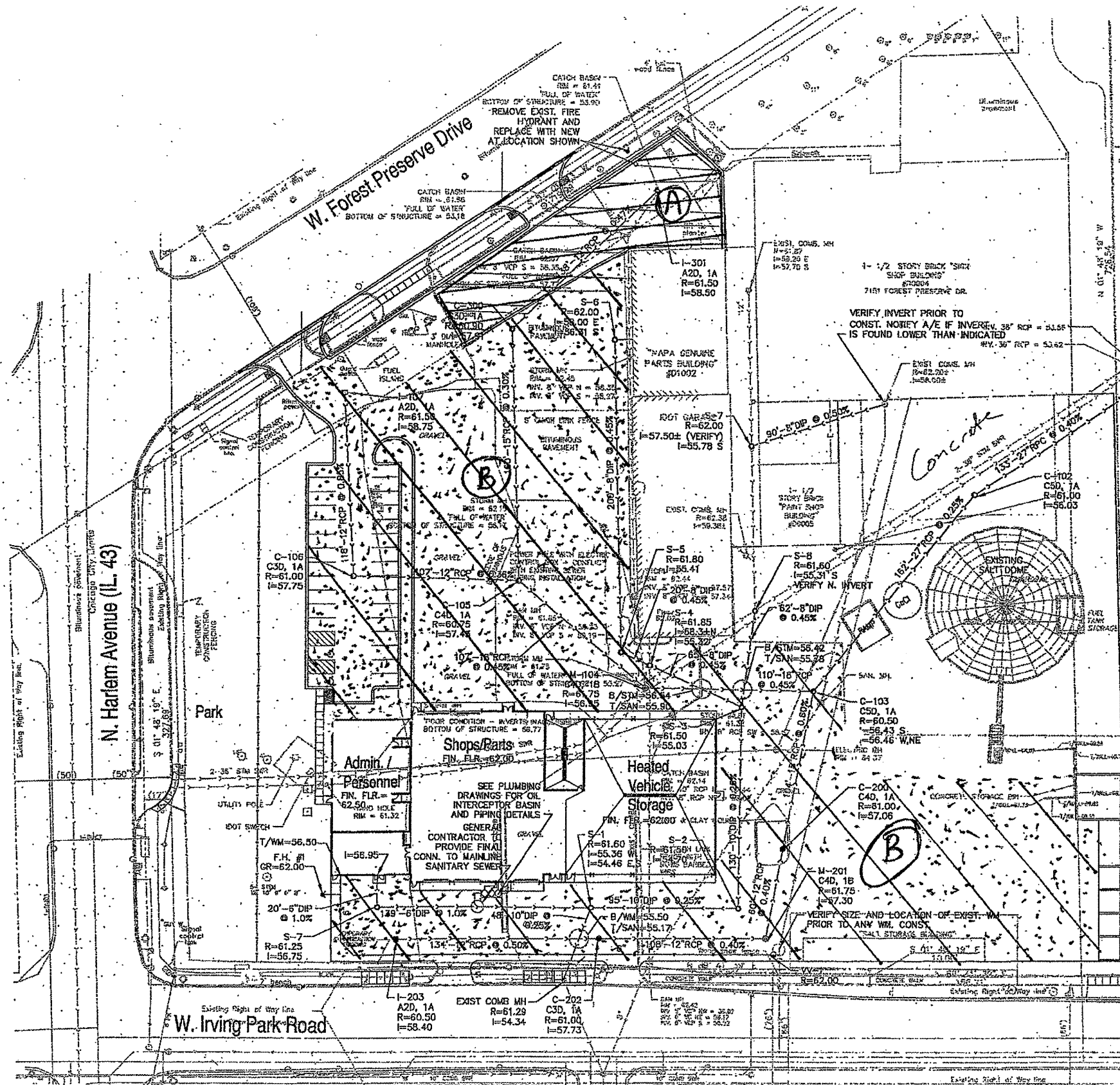
**NOTE:**  
CONTRACTOR SHALL MILL FIRST BEFORE PATCHING

**LEGEND**

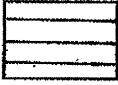
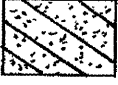
- 2 1/4" HMA SURFACE REMOVAL
- 1 1/2" HMA SURFACE COURSE, MIX "D", N70
- 3/4" LEVELING BINDER (MM), N70

ILLINOIS DEPARTMENT OF  
TRANSPORTATION  
  
OAKBROOK TEAM SECTION

ROUTE	SECTION	COUNTY	TOTAL SHEETS	SHEET NUMBER
VARIOUS	2010-038 RS	COOK & DuPAGE	6	5



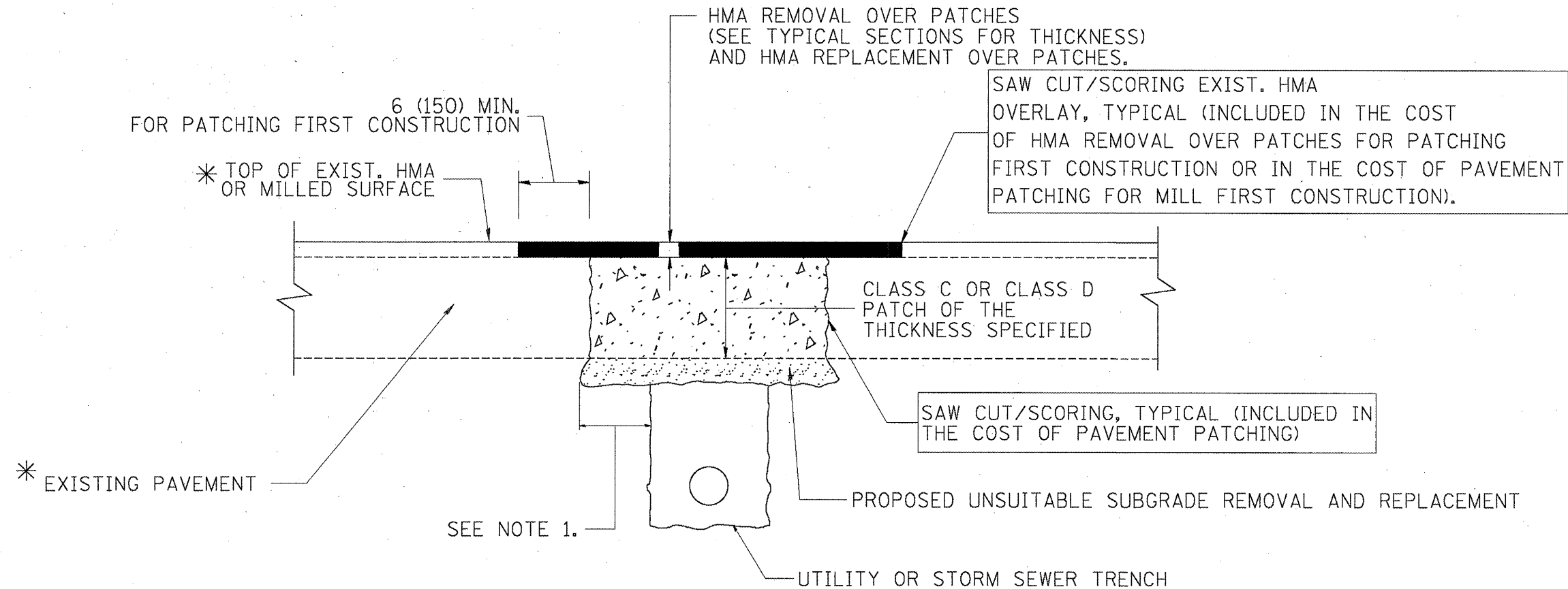
**LEGEND**

- (A)  2 1/4" HMA SURFACE REMOVAL  
1 1/2" HMA SURFACE COURSE, MIX "D", N70  
3/4" LEVELING BINDER (MM), N70
- (B)  HOT-MIX ASPHALT PAVEMENT (FULL DEPTH), 6"

**NOTE:**

CONTRACTOR SHALL MILL FIRST BEFORE PATCHING

ILLINOIS DEPARTMENT OF  
TRANSPORTATION  
  
NORTHSIDE TEAM SECTION



\* SEE TYPICAL SECTIONS FOR THICKNESS AND MATERIALS

NOTES:

1. THE WIDTH OF THE FULL DEPTH PATCH OVER A TRENCH SHALL BE 12 (300) WIDER ON EACH SIDE OF THE TRENCH.
2. FOR METHOD OF MEASUREMENT AND BASIS OF PAYMENT, SEE RECURRING SPECIAL PROVISION "PATCHING WITH HOT-MIX ASPHALT OVERLAY REMOVAL".

SEQUENCE OF CONSTRUCTION (PATCHING FIRST)

1. REMOVE THE EXISTING HMA MATERIAL OVER THE AREA TO BE PATCHED.
2. REMOVE AND REPLACE WITH CLASS C OR D PATCH.
3. REPLACE HMA MATERIAL OVER THE AREA TO BE PATCHED.

SEQUENCE OF CONSTRUCTION (MILLING FIRST)

1. MILL HMA FIRST IF THERE IS AT LEAST 4 1/2 INCHES OR MORE OF HMA MATERIAL ON TOP OF THE EXISTING PAVEMENT OR IF THE PAVEMENT IS FULL DEPTH HMA. A MINIMUM OF 2 INCHES OF HMA MATERIAL SHALL BE IN PLACE AFTER MILLING.
2. REMOVE AND REPLACE WITH FULL DEPTH CLASS D PATCHES TO TOP OF MILLED SURFACE.

ALL DIMENSIONS ARE IN INCHES (MILLIMETERS) UNLESS OTHERWISE SHOWN.

REVISIONS	
NAME	DATE
R. SHAH	01/14/95
R. SHAH	03/23/95
R. SHAH	04/24/95
A. HOUSEH	03/15/96
A. ABBAS	03/21/97
A. ABBAS	01/20/98
ART ABBAS	04/27/98
R. BORO	01/01/07
R. BORO	09/04/07
K. ENG	10/27/08

ILLINOIS DEPARTMENT OF TRANSPORTATION

PAVEMENT PATCHING FOR HMA SURFACED PAVEMENT

SCALE: VERT. NONE  
 HORIZ.

DRAWN BY  
 CHECKED BY

BD400-04 (BD-22)