

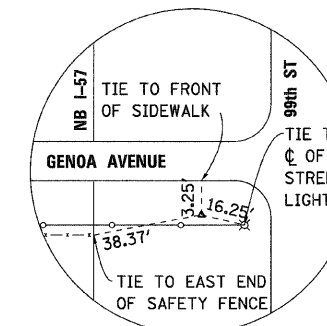
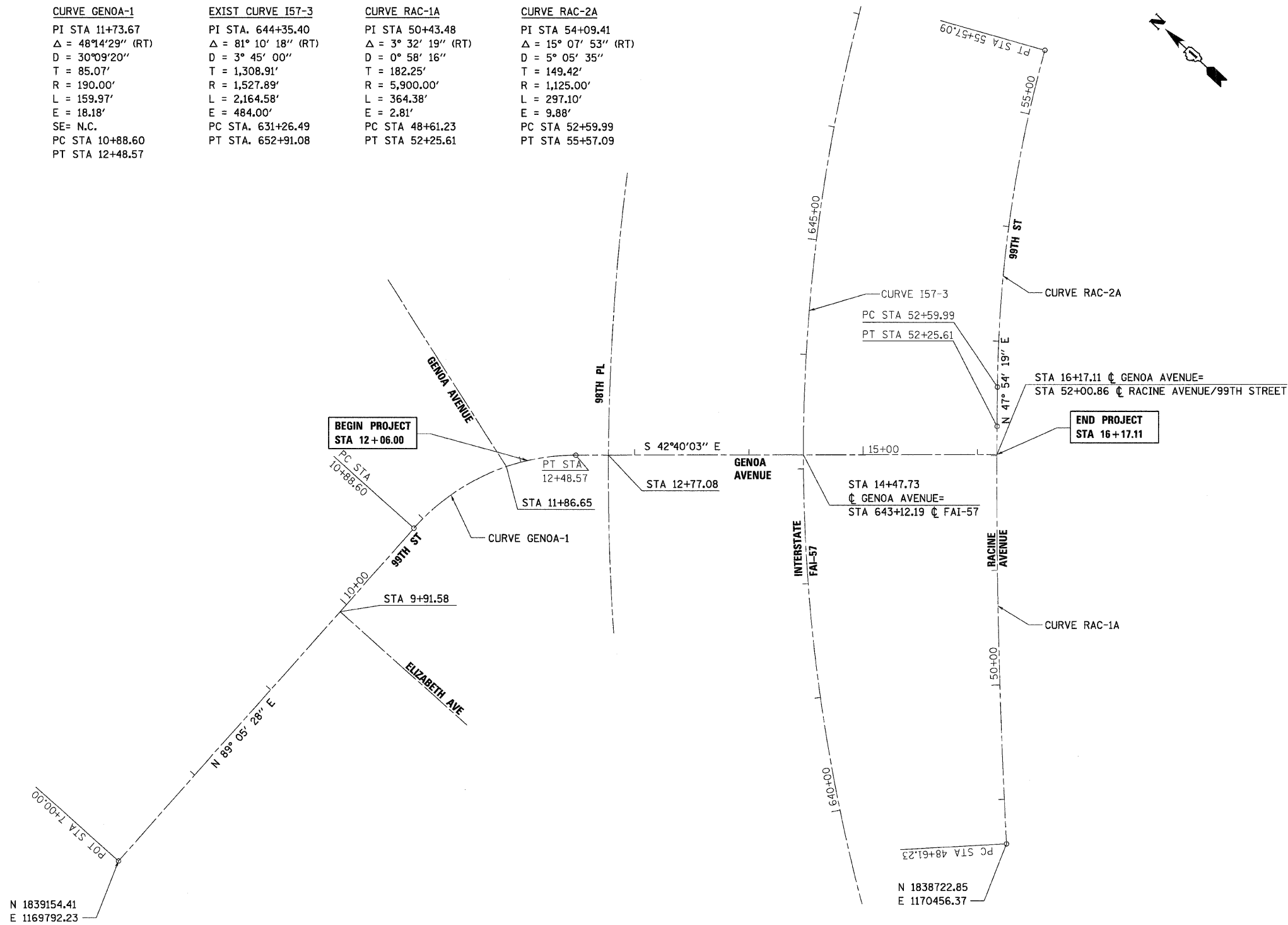
F.A.I. RTE.	SECTION	COUNTY	TOTAL SHEETS	SHEET NO.
57	2222.3B	COOK	77	12
STA. 12+06.00		TO STA. 16+17.11		
FED. ROAD DIST. NO.		ILLINOIS	FED. AID PROJECT	

CURVE GENOA-1
 PI STA 11+73.67
 $\Delta = 48^{\circ}14'29''$ (RT)
 D = 30'09"20"
 T = 85.07'
 R = 190.00'
 L = 159.97'
 E = 18.18'
 SE= N.C.
 PC STA 10+88.60
 PT STA 12+48.57

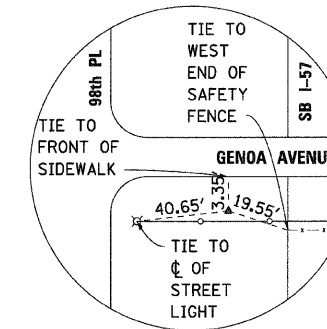
EXIST CURVE I57-3
 PI STA. 644+35.40
 $\Delta = 81^{\circ}10'18''$ (RT)
 D = 3^{\circ}45'00"
 T = 1,308.91'
 R = 1,527.89'
 L = 2,164.58'
 E = 484.00'
 PC STA. 631+26.49
 PT STA. 652+91.08

CURVE RAC-1A
 PI STA 50+43.48
 $\Delta = 3^{\circ}32'19''$ (RT)
 D = 0^{\circ}58'16"
 T = 182.25'
 R = 5,900.00'
 L = 364.38'
 E = 2.81'
 PC STA 48+61.23
 PT STA 52+25.61

CURVE RAC-2A
 PI STA 54+09.41
 $\Delta = 15^{\circ}07'53''$ (RT)
 D = 5^{\circ}05'35"
 T = 149.42'
 R = 1,125.00'
 L = 297.10'
 E = 9.88'
 PC STA 52+59.99
 PT STA 55+57.09



CUT "X" ON SIDEWALK
 STA 15+77.79, 32.24' RT
 EL 610.62
 N 1838836.12
 E 1170523.62



CUT "X" ON SIDEWALK
 STA 13+42.26, 31.29' RT
 EL 610.91
 N 1839009.28
 E 1170363.99

BENCHMARKS

SOUTH BOLT ON FIRE HYDRANT
 GENOA AVENUE AND 99TH STREET
 NORTHWEST CORNER
 ELEVATION = 611.46

PLOT DATE = Thursday, March 04, 2010
 FILE NAME = S:\VI-CADD\01-01\01-01\12_9586a.dgn
 PLOT SCALE = 50:1
 USER NAME = 3679



REVISIONS	
NAME	DATE

ILLINOIS DEPARTMENT OF TRANSPORTATION

ALIGNMENT, TIES AND BENCHMARKS
GENOA AVENUE OVER FAI-57

SCALE: VERT. NONE
 HORIZ. DATE: 3/1/2010

DRAWN BY: E.D.
 CHECKED BY: A.A.C.