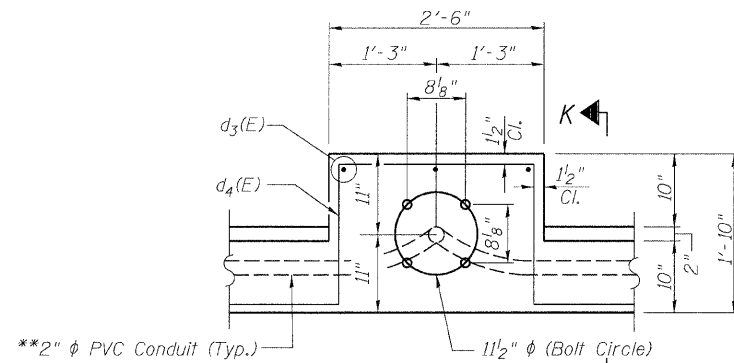


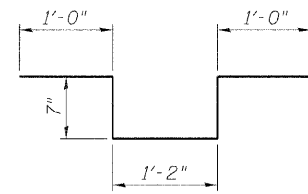
BILL OF MATERIAL

| Bar | No. | Size | Length | Shape |
|----------------------------------|-----|---------|---------|-------|
| a(E) | 902 | #5 | 35'-0" | — |
| a ₁ (E) | 4 | #5 | 33'-0" | — |
| a ₂ (E) | 72 | #5 | 5'-0" | — |
| a ₃ (E) | 32 | #5 | 2'-0" | — |
| a ₄ (E) | 648 | #4 | 4'-4" | — |
| b(E) | 644 | #5 | 28'-6" | — |
| b ₁ (E) | 408 | #5 | 32'-11" | — |
| b ₂ (E) | 140 | #6 | 32'-1" | — |
| b ₃ (E) | 48 | #5 | 28'-0" | — |
| c(E) | 374 | #5 | 2'-5" | — |
| c ₁ (E) | 374 | #5 | 8'-1" | — |
| d(E) | 374 | #4 | 4'-8" | — |
| d ₁ (E) | 374 | #6 | 4'-7" | — |
| d ₂ (E) | 92 | #4 | 2'-0" | — |
| d ₃ (E) | 12 | #6 | 4'-8" | — |
| d ₄ (E) | 20 | #6 | 8'-11" | — |
| e(E) | 144 | #4 | 15'-3" | — |
| x(E) | 124 | #5 | 5'-11" | — |
| Concrete Superstructure | | Cu. Yd. | 575.4 | |
| Reinforcement Bars, Epoxy Coated | | Pound | 87230 | |

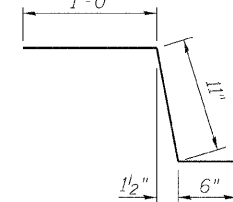
Notes:
See Sheet 11 of 32 for Deck Plan and Cross Section.
** For Pay Item see Electrical Plans.



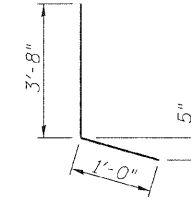
**2" φ PVC Conduit (Typ.)
1 1/2" φ (Bolt Circle)
**LIGHT POLE MOUNTED
ON CONCRETE PARAPET PLAN
DETAIL C**



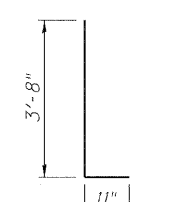
BAR a₄(E)



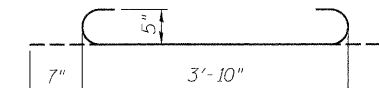
BAR c(E)



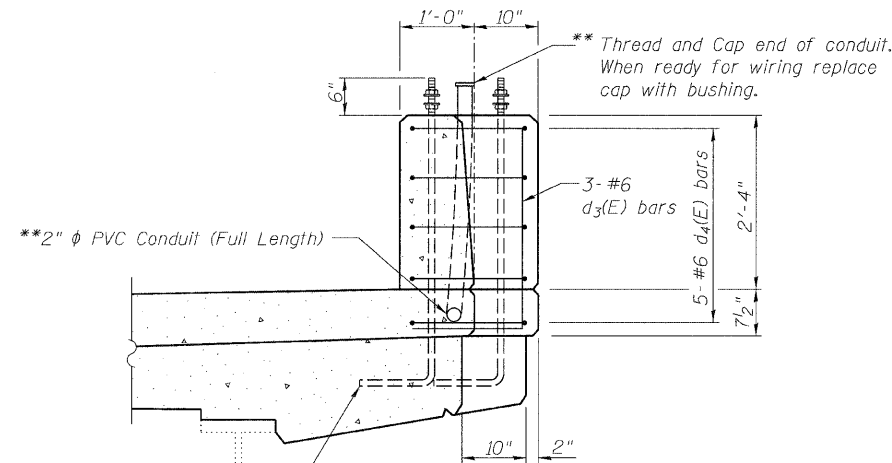
BAR d(E)



BAR d₁(E)

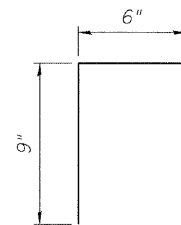


BAR a₂(E)

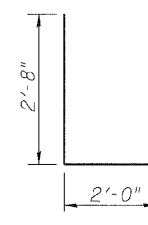


**2" φ PVC Conduit (Full Length)
3- #6 d₃(E) bars
5- #6 d₄(E) bars
1" φ x 5'-2" Anchor Bolts, Provide 3 flat washers, 1 regular nut & 1 locknut for each bolt. All nuts & washers shall be galvanized. See Light Pole Anchor Rod Detail.

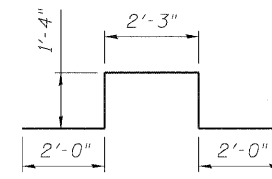
SECTION K-K



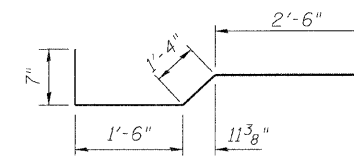
BAR d₂(E)



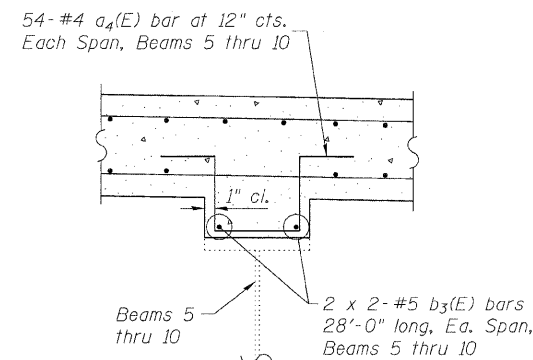
BAR d₃(E)



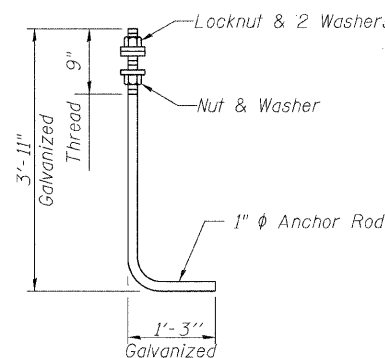
BAR d₄(E)



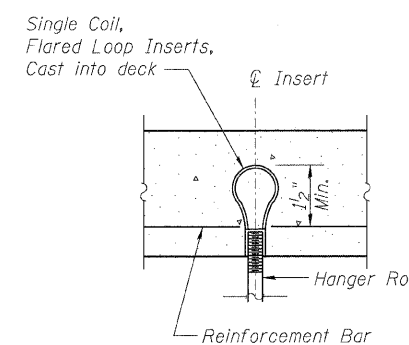
BAR x(E)



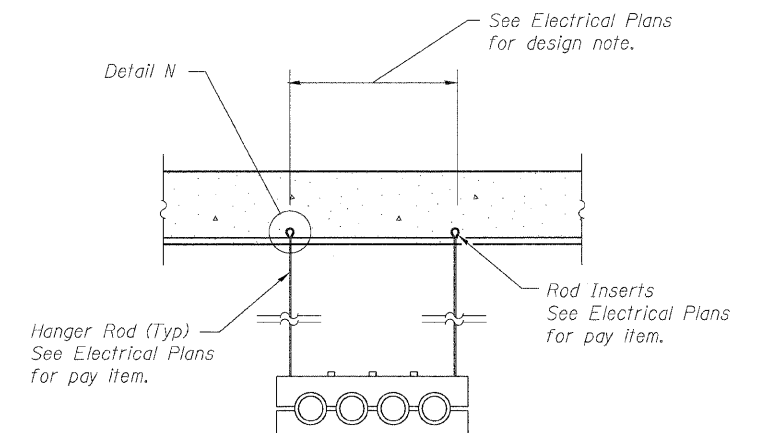
**FILLET REINFORCEMENT
DETAILS**
(For Fillet heights > 6")



**LIGHT POLE
ANCHOR ROD DETAIL**
(ASTM F 1554 Grade 105)
Cost of Anchor Bolt is included with Concrete Superstructure



DETAIL N



4 CONDUIT BANK SUPPORT DETAIL
See Electrical Plans for Design note and payment

**SUPERSTRUCTURE DETAILS -3
STRUCTURE NO. 016-2030**

| | | | | | | |
|---|--------------|---|---------|----------------------------------|--------------|-----------|
| <p>LIN ENGINEERING, LTD. Consulting Engineers Chatham, Illinois</p> | SHEET NO. 14 | F.A.I. RTE. | SECTION | COUNTY | TOTAL SHEETS | SHEET NO. |
| | 32 SHEETS | 57 | 2222.3B | COOK | 77 | 44 |
| <p>Designed By: ESH Date: 7/2/09</p> | | <p>Checked By: MTH Date: 05-20-09</p> | | <p>CONTRACT NO. 62119</p> | | |
| | | <p>FED. ROAD DIST. NO.</p> | | <p>ILLINOIS FED. AID PROJECT</p> | | |