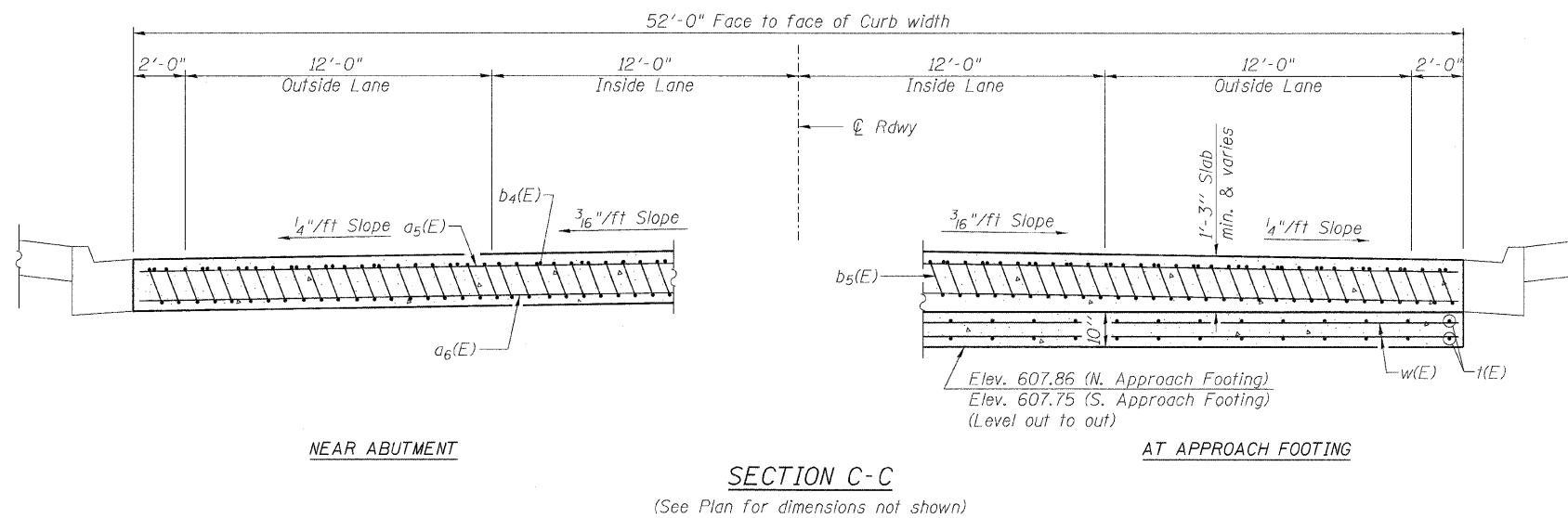


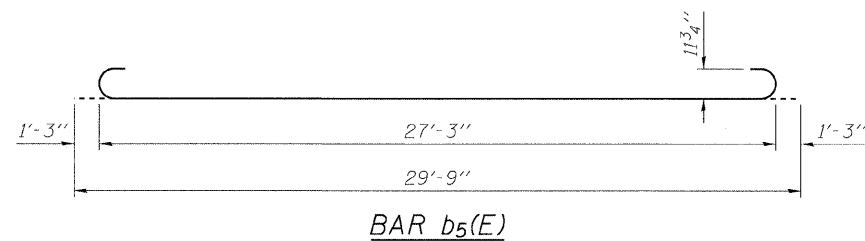
Notes:  
See sheet 15 of 32 for Detail A.  
Approach slab concrete shall be paid for as Concrete Superstructure.  
Approach footing concrete shall be paid for as Concrete Structures.  
Reinforcement shall be paid for as Reinforcement Bars, Epoxy Coated.  
For  $v_{13}(E)$  and  $v_{23}(E)$  bar details, see sheets 23 and 27 of 32.  
The approach footing maximum applied service bearing pressure ( $Q_{max}$ ) = 2.0 ksf.  
For bar splicer details, see sheet 32 of 32.  
Cost of excavation for approach footing included with Concrete Structures.



\* Tilt #9  $b_5(E)$  bars as required to maintain clearance.  
\*\* Cost included with Concrete Superstructure.

TWO APPROACHES  
BILL OF MATERIAL

Bar	No.	Size	Length	Shape
$a_5(E)$	100	#4	25'-8"	—
$a_6(E)$	184	#5	25'-8"	—
$b_4(E)$	84	#4	29'-8"	—
$b_5(E)$	252	#9	29'-9"	⌋
$t(E)$	216	#4	9'-8"	—
$w(E)$	160	#5	25'-8"	—
Concrete Superstructure			Cu. Yd.	154.4
Concrete Structures			Cu. Yd.	32.1
Reinforcement Bars, Epoxy Coated			Pound	39480



BRIDGE APPROACH SLAB DETAILS -2  
STRUCTURE NO. 016-2030

<p>LIN ENGINEERING, LTD. Consulting Engineers Chatham, Illinois</p>	SHEET NO. 16	F.A.I. RTE.	SECTION	COUNTY	TOTAL SHEETS	SHEET NO.	
	32 SHEETS	57	2222.3B	COOK	77	46	
<p>Designed By: ESH    Checked By: MTH    Drawn By: ESH Date: 7/2009    File: 016-2030.dgn</p>		<p>FED. ROAD DIST. NO.    ILLINOIS    FED. AID PROJECT</p>				<p>CONTRACT NO. 62119</p>	