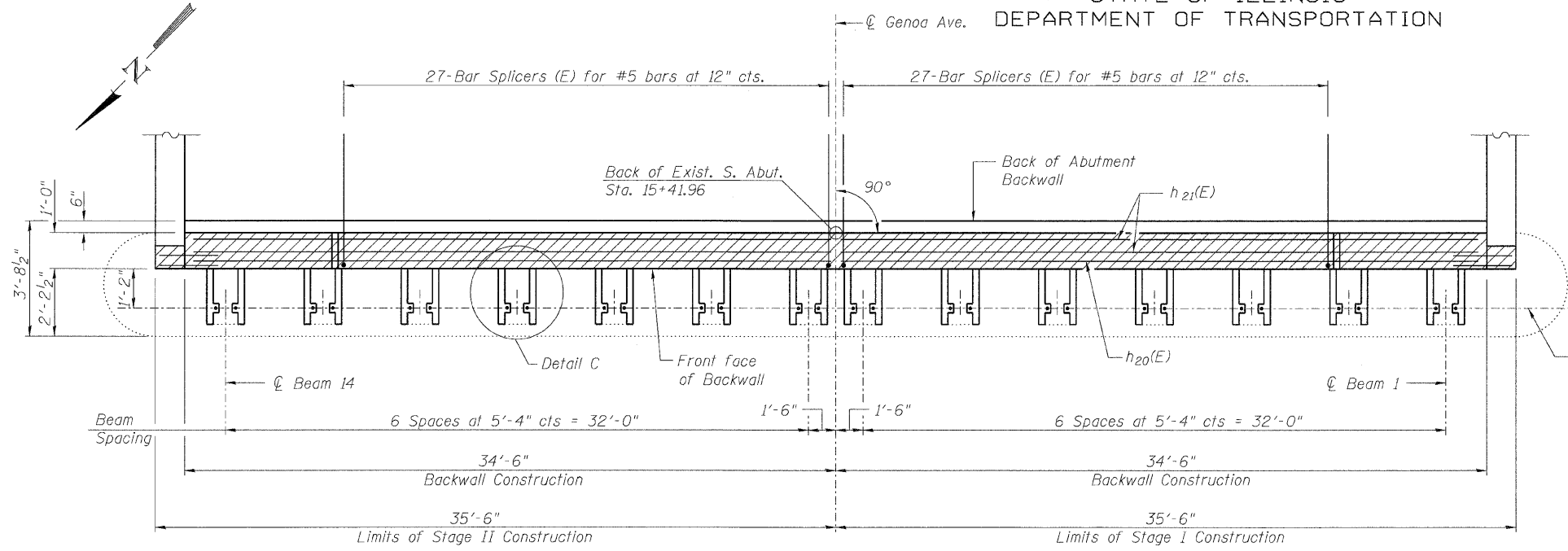
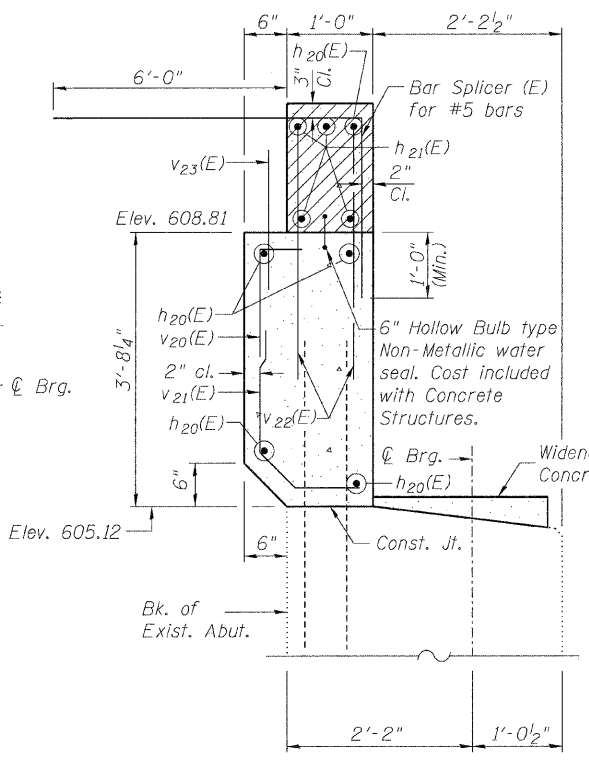


STATE OF ILLINOIS
DEPARTMENT OF TRANSPORTATION

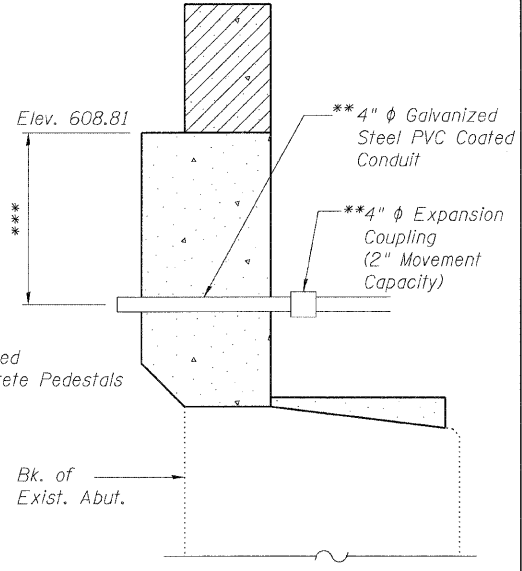


PLAN

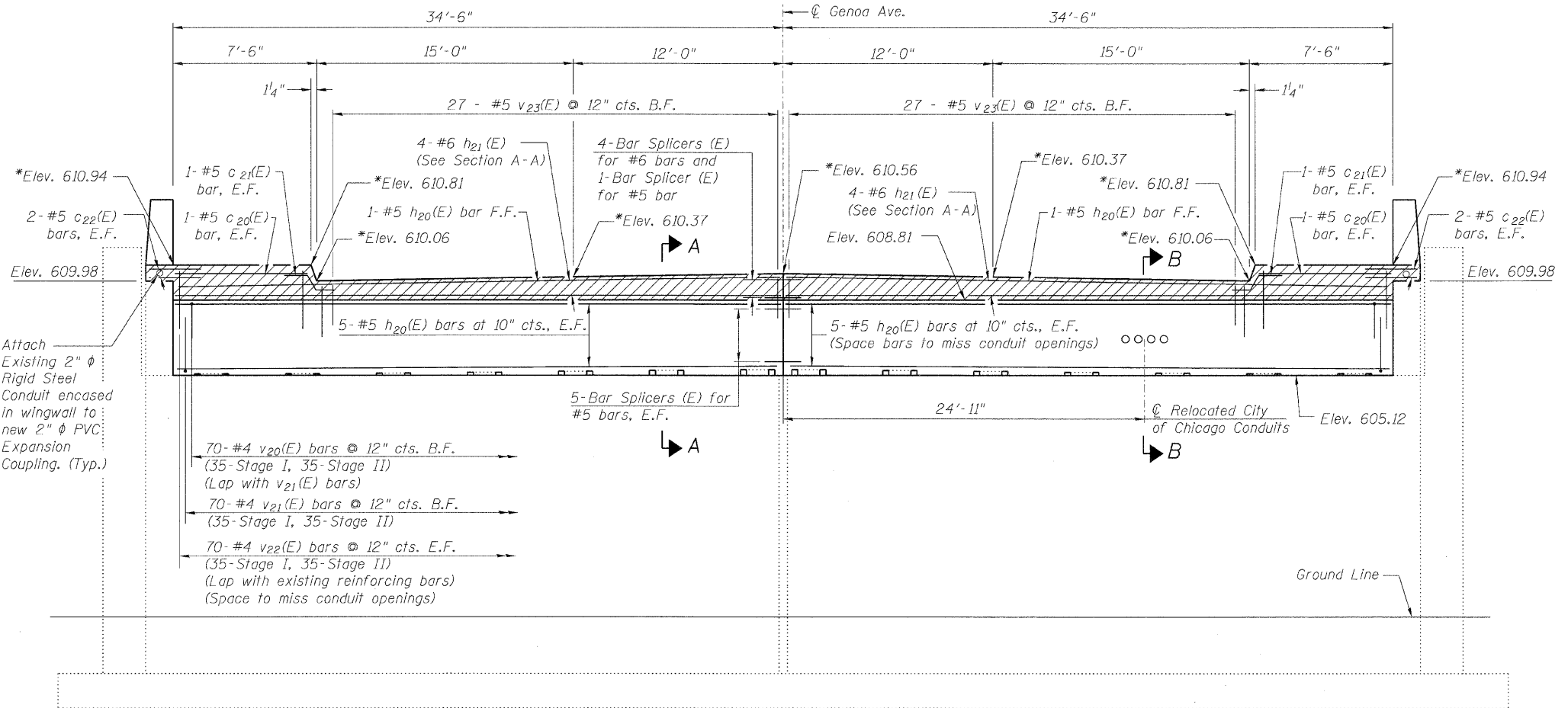


SECTION A-A

Existing Reinforcement Bars
Extending into Abutment Backwall
to remain in place



SECTION B-B



ELEVATION
(Looking South)

- Notes:
- Hatched area to be poured after superstructure forms have been removed. Quantity of concrete included with Concrete Superstructure.
 - For Detail C see sheet 29 of 32.
 - Apply Concrete Sealer to front face of backwall, top of existing beam seat and top and sides of widened concrete pedestals.
- * Elevations are taken at Back of Abutment (Existing)
 - ** See Electrical Plans for Payment.
 - *** Vertical location of conduit to be set in field.

MINIMUM BAR LAP
#4 bar = 1'-4"
#5 bar = 1'-8"

**SOUTH ABUTMENT ALTERATIONS
STRUCTURE NO. 016-2030**

	SHEET NO. 27	F.A.I. RTE.	SECTION	COUNTY	TOTAL SHEETS	SHEET NO.
	32 SHEETS	57	2222.3B	COOK	77	57
Designed By: ESH Date: 7/2009		Checked By: MTH File: 016-2030.dgn		Drawn By: ESH		CONTRACT NO. 62119
FED. ROAD DIST. NO.		ILLINOIS		FED. AID PROJECT		