

F.A.P. RTE.	SECTION	COUNTY	TOTAL SHEETS	SHEET NO.
345	8WRS-2	KANE	72	1
FED. ROAD DIST. NO. 1	ILLINOIS	CONTRACT NO. 62529		

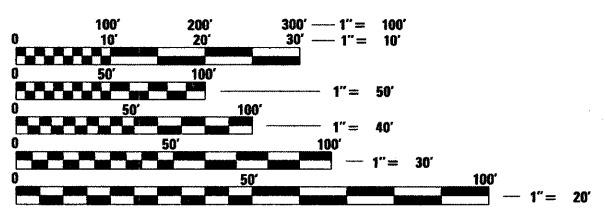
D-91-334-02

**STATE OF ILLINOIS**  
**DEPARTMENT OF TRANSPORTATION**  
**DIVISION OF HIGHWAYS**  
**PROPOSED**  
**HIGHWAY PLANS**  
**F.A.P. 345 (US ROUTE 20)**  
**SECTION: 8WRS-2**  
**EAST OF PLANK ROAD TO WELD ROAD**  
**RESURFACING, WIDENING & RESURFACING,**  
**TRAFFIC SIGNAL INTERCONNECTION**  
**PROJECT: NHF-CMF-0345(053)**  
**KANE COUNTY**  
**C-91-334-02**

FOR INDEX OF SHEETS, SEE SHEET NO. 2

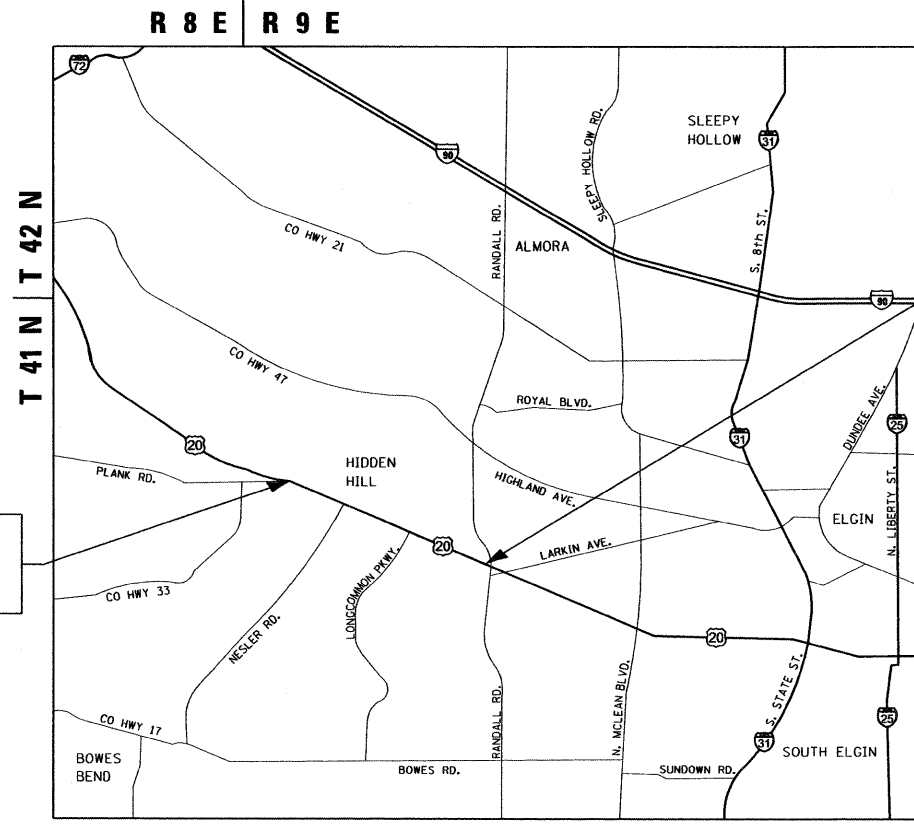
IMPROVEMENT LOCATED WITHIN THE CITY OF ELGIN

**TRAFFIC DATA**  
**US ROUTE 20**  
**2007 ADT = 22,500**  
**SPEED LIMIT = 45 MPH**



FULL SIZE PLANS HAVE BEEN PREPARED USING STANDARD ENGINEERING SCALES. REDUCED SIZED PLANS WILL NOT CONFORM TO STANDARD SCALES. IN MAKING MEASUREMENTS ON REDUCED PLANS, THE ABOVE SCALES MAY BE USED.

J.U.L.I.E.  
 JOINT UTILITY LOCATION INFORMATION FOR EXCAVATION  
 1-800-892-0123  
 OR 811



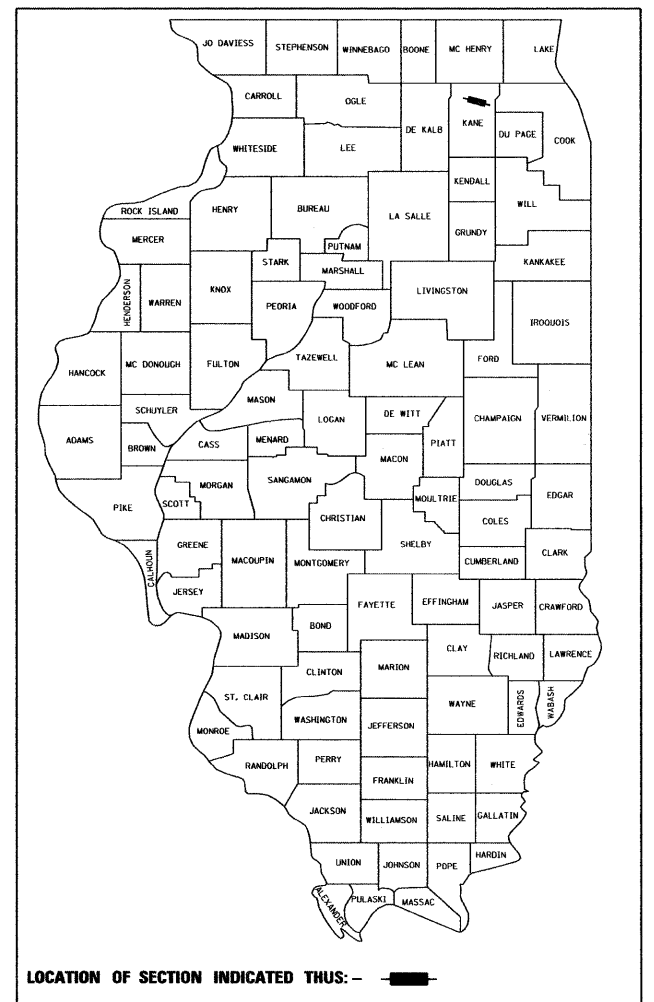
IMPROVEMENT BEGINS  
 STA. 105 + 60.73

IMPROVEMENT ENDS  
 STA. 169 + 90.44

SCALE: NTS

ELGIN TOWNSHIP

GROSS LENGTH OF PROJECT = 6,429.71 FT = 1.22 MILES  
 NET LENGTH OF PROJECT = 6,429.71 FT = 1.22 MILES



LOCATION OF SECTION INDICATED THUS: — ■ —


STATE OF ILLINOIS  
 DEPARTMENT OF TRANSPORTATION  
 DIVISION OF HIGHWAYS

SUBMITTED April 9, 2010

*Diane M. O'Keefe*  
 DEPUTY DIRECTOR OF HIGHWAYS, REGION ENGINEER

May 7 2010  
*Scott E. Stitt, P.E.*  
 acting ENGINEER OF DESIGN AND ENVIRONMENT

May 7 2010  
*Christine M. Reed*  
 DIRECTOR OF HIGHWAYS, CHIEF ENGINEER

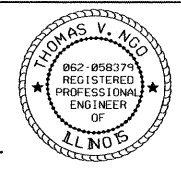
 200 22ND Street, Suite 216, Lombard, IL 60148  
 630.705.0110 voice, 630.839.2566 fax  
 www.mps-il.com

**MILLENNIA PROFESSIONAL SERVICES**

**PRINTED BY THE AUTHORITY  
 OF THE STATE OF ILLINOIS**

MILLENNIA PROFESSIONAL SERVICES  
 THOMAS V. NGO, P.E.  
 # 062-058379

*Thomas V. Ngo*  
 DATE: 04/09/10  
 SIGNATURE AND SEAL APPLIES TO DRAWG.



DISTRICT ONE - PLAN PREP ENGINEER: KEN ENG (847) 705-4247

CONTRACT NO. 62529