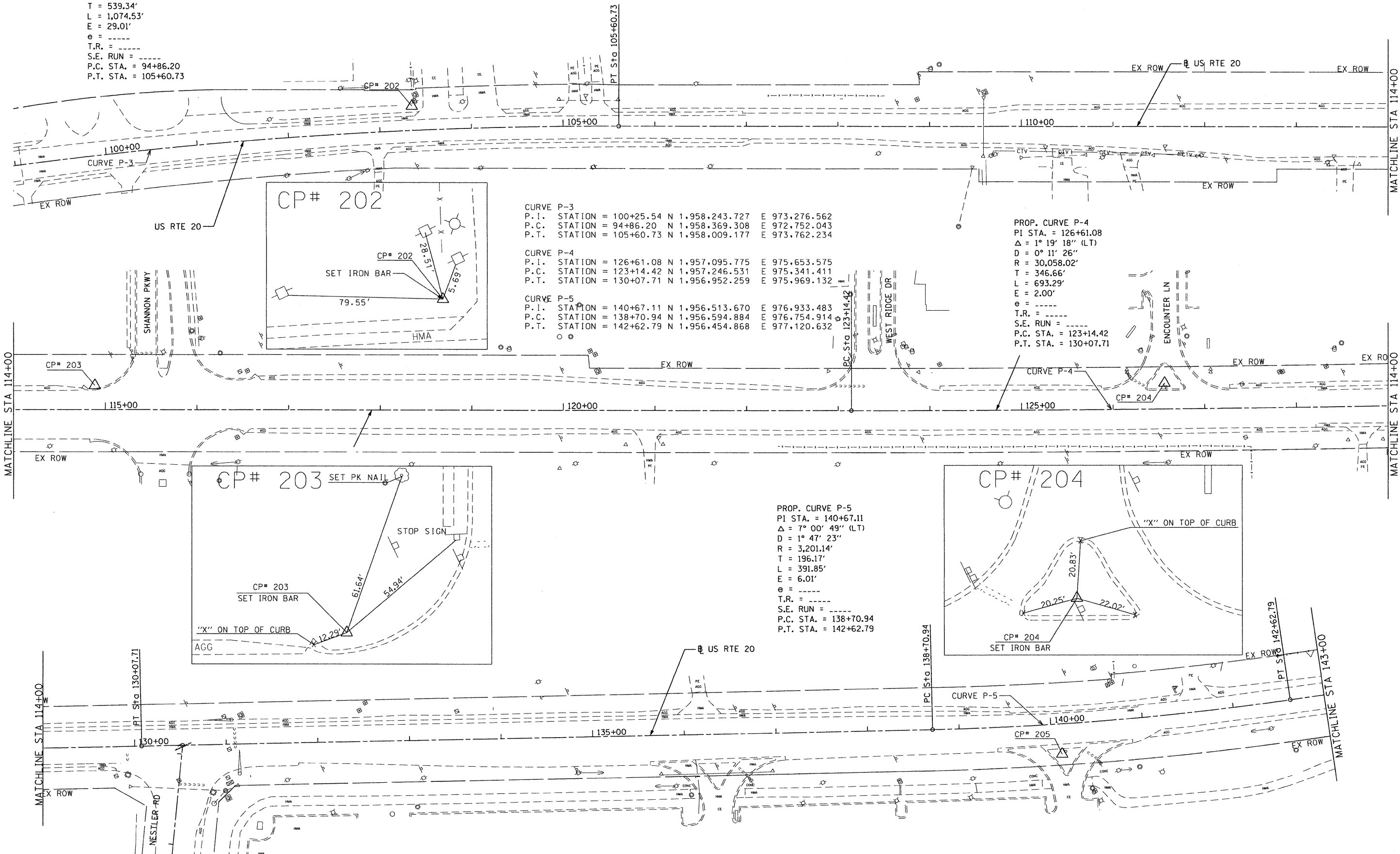


PROP. CURVE P-3  
 PI STA. = 100+25.54 CP# 202  
 $\Delta = 12^\circ 18' 48''$  (RT)  
 $D = 1^\circ 08' 45''$   
 $R = 4,999.98'$   
 $T = 539.34'$   
 $L = 1,074.53'$   
 $E = 29.01'$   
 $\theta = \dots$   
 T.R. = \dots  
 S.E. RUN = \dots  
 P.C. STA. = 94+86.20  
 P.T. STA. = 105+60.73



**CURVE P-3**  
 P.I. STATION = 100+25.54 N 1,958,243.727 E 973,276.562  
 P.C. STATION = 94+86.20 N 1,958,369.308 E 972,752.043  
 P.T. STATION = 105+60.73 N 1,958,009.177 E 973,762.234

**CURVE P-4**  
 P.I. STATION = 126+61.08 N 1,957,095.775 E 975,653.575  
 P.C. STATION = 123+14.42 N 1,957,246.531 E 975,341.411  
 P.T. STATION = 130+07.71 N 1,956,952.259 E 975,969.132

**CURVE P-5**  
 P.I. STATION = 140+67.11 N 1,956,513.670 E 976,933.483  
 P.C. STATION = 138+70.94 N 1,956,594.884 E 976,754.914  
 P.T. STATION = 142+62.79 N 1,956,454.868 E 977,120.632

**PROP. CURVE P-4**  
 PI STA. = 126+61.08  
 $\Delta = 1^\circ 19' 18''$  (LT)  
 $D = 0^\circ 11' 26''$   
 $R = 30,058.02'$   
 $T = 346.66'$   
 $L = 693.29'$   
 $E = 2.00'$   
 $\theta = \dots$   
 T.R. = \dots  
 S.E. RUN = \dots  
 P.C. STA. = 123+14.42  
 P.T. STA. = 130+07.71

**PROP. CURVE P-5**  
 PI STA. = 140+67.11  
 $\Delta = 7^\circ 00' 49''$  (LT)  
 $D = 1^\circ 47' 23''$   
 $R = 3,201.14'$   
 $T = 196.17'$   
 $L = 391.85'$   
 $E = 6.01'$   
 $\theta = \dots$   
 T.R. = \dots  
 S.E. RUN = \dots  
 P.C. STA. = 138+70.94  
 P.T. STA. = 142+62.79

KE 4-21-2010

FILE NAME = P:\2009\ME\9006\Var\Var\_Phi\CADD\W05.US20\Shs\10162529-sh1-ATBl.dgn  
 PLOT SCALE = 50,000% / IN.  
 USER NAME = Millennium Professional Services



200 22ND Street, Suite 216, Lombard, IL 60148  
 630.705.0110 voice, 630.839.2566 fax  
 WWW.MPS-IL.COM  
**MILLENNIA PROFESSIONAL SERVICES**

DESIGNED	TVN	REVISED	-
DRAWN	TVN	REVISED	-
CHECKED	RPD	REVISED	-
DATE	4/21/2010	REVISED	-

**STATE OF ILLINOIS  
 DEPARTMENT OF TRANSPORTATION**

**U.S. ROUTE 20  
 EAST OF PLANK ROAD TO WELD ROAD**

SCALE: SHEET NO. OF SHEETS STA. TO STA.

F.A.P. RTE.	SECTION	COUNTY	TOTAL SHEETS	SHEET NO.
345	8WRS-2	KANE	72	10
CONTRACT NO. 62529				
FED. ROAD DIST. NO. 1 ILLINOIS FED. AID PROJECT				

P:\2009\ME\9006\Var\Var\_Phi\CADD\W05.US20\Shs\10162529-sh1-ATBl.dgn