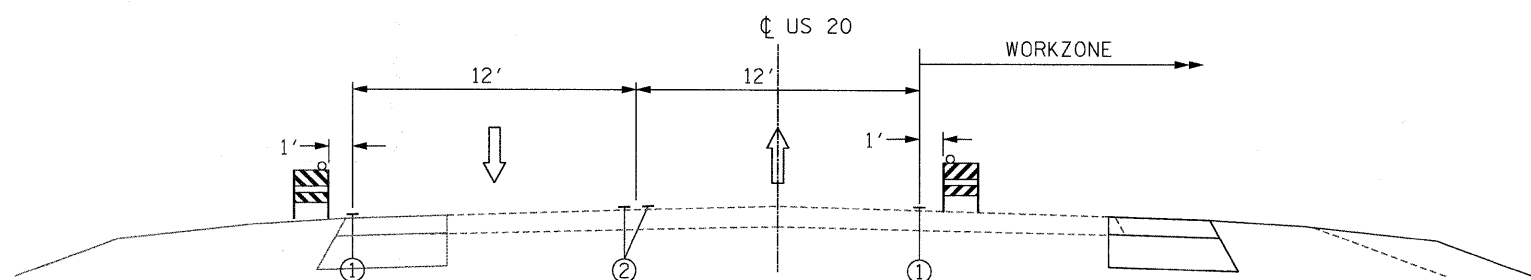


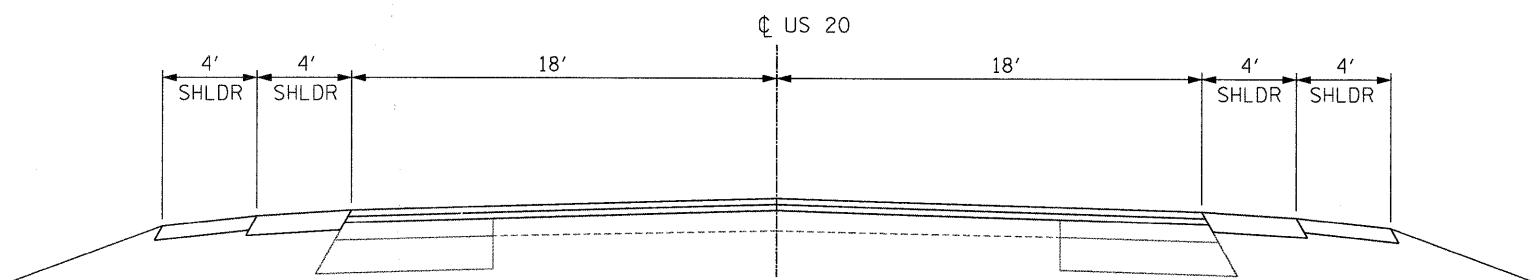
STAGE 1 TYPICAL SECTION  
US ROUTE 20

**LEGEND**

- ① 4 INCH WHITE EDGE LINE
- ② 4" DOUBLE YELLOW CENTERLINE



STAGE 2 TYPICAL SECTION  
US ROUTE 20



STAGE 3 TYPICAL SECTION  
US ROUTE 20

FILE NAME : P:\2009\ME09006\_Ver-Yar-Phil\CADD\W05\_L620\Shets\0162529-sh1-MOT02.dgn  
 USER : JAMES  
 MILLENIA PROFESSIONAL SERVICES



200 22ND Street, Suite 216, Lombard, IL 60148  
 630.705.0110 voice, 630.839.2566 fax  
 WWW.MPS-IL.COM

**MILLENNIA PROFESSIONAL SERVICES**

DESIGNED - TVN	REVISED -
DRAWN - TVN	REVISED -
CHECKED - RPD	REVISED -
DATE - 4/9/2010	REVISED -

**STATE OF ILLINOIS  
DEPARTMENT OF TRANSPORTATION**

**U.S. ROUTE 20  
EAST OF PLANK ROAD TO WELD ROAD**

**SUGGESTED STAGES OF CONSTRUCTION  
AND TRAFFIC CONTROL  
TYPICAL SECTIONS**

SCALE: SHEET NO. OF SHEETS STA. TO STA.

F.A.P. RTE.	SECTION	COUNTY	TOTAL SHEETS	SHEET NO.
345	8WRS-2	KANE	72	19
				CONTRACT NO. 62529

FED. ROAD DIST. NO. 1 [ILLINOIS] FED. AID PROJECT

P:\2009\ME09006\_Ver-Yar-Phil\CADD\W05\_US20\Shets\0162529-sh1-MOT02.dgn