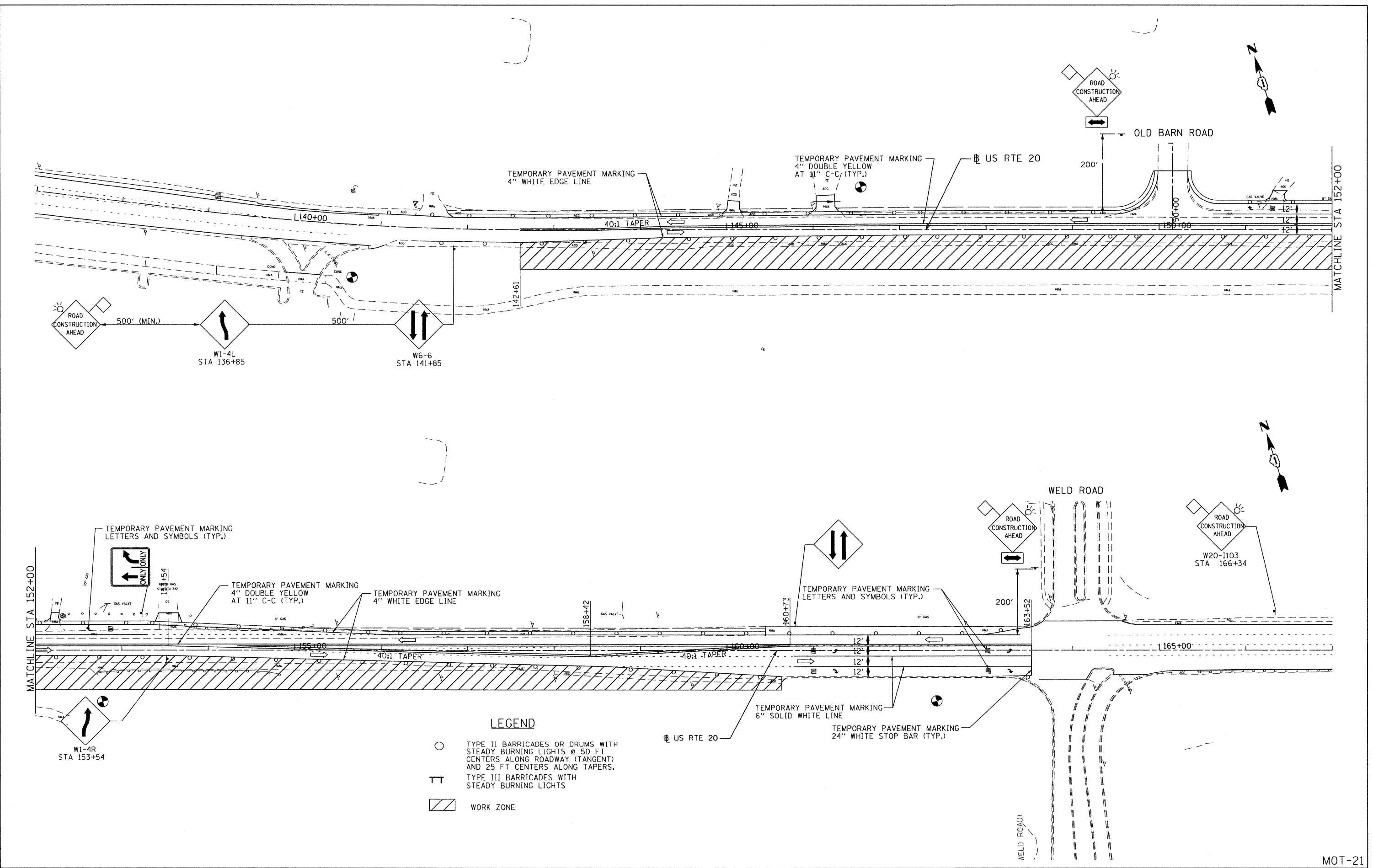


KE 4-21-2010

FILE NAME : F:\2009\ME09086\_VerVar\_Phil\CADD\W05\_US20\Sta\162529-sht-MOT21.dgn  
 PLOT SCALE : 50.0000' / IN.  
 USER NAME : Millennium Professional Services



**LEGEND**

- TYPE II BARRICADES OR DRUMS WITH STEADY BURNING LIGHTS @ 50 FT CENTERS ALONG ROADWAY (TANGENT) AND 25 FT CENTERS ALONG TAPERS.
- ⊥ TYPE III BARRICADES WITH STEADY BURNING LIGHTS
- ▨ WORK ZONE

**MILLENNIA PROFESSIONAL SERVICES**  
 200 22ND Street, Suite 216, Lombard, IL 60148  
 630.705.0110 voice, 630.839.2566 fax  
 WWW.MPS-IL.COM

DESIGNED - TVN	REVISED -
DRAWN - TVN	REVISED -
CHECKED - RPD	REVISED -
DATE - 4/20/2010	REVISED -

**STATE OF ILLINOIS  
 DEPARTMENT OF TRANSPORTATION**

**U.S. ROUTE 20  
 EAST OF PLANK ROAD TO WELD ROAD**

**SUGGESTED STAGES OF CONSTRUCTION  
 AND TRAFFIC CONTROL  
 STAGE - 2**

F.A.P. RTE. 345	SECTION 8WRS-2	COUNTY KANE	TOTAL SHEETS 72	SHEET NO. 21
CONTRACT NO. 62529				
FED. ROAD DIST. NO. 1 ILLINOIS FED. AID PROJECT				

MOT-21

F:\2009\ME09086\_VerVar\_Phil\CADD\W05\_US20\Sta\162529-sht-MOT21.dgn