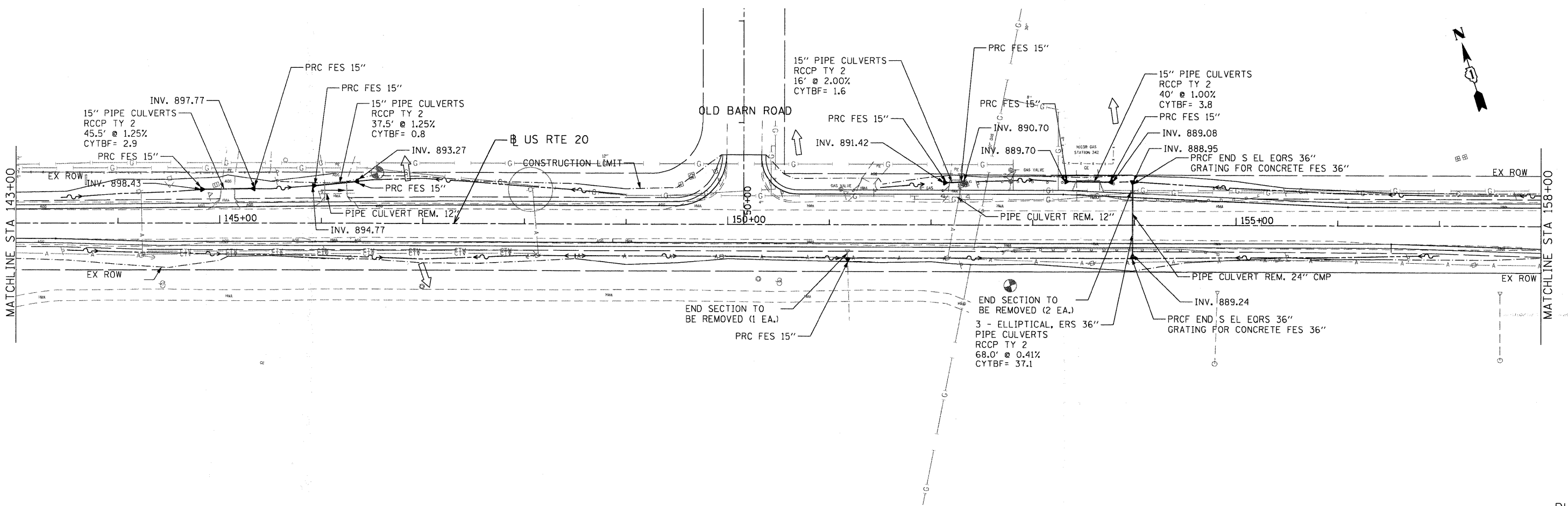


MATCHLINE STA 37+00
SEE SHEET NO. 27
NESLER ROAD



15" PIPE CULVERTS
RCCP TY 2
45.5' @ 1.25%
CYTBF= 2.9

15" PIPE CULVERTS
RCCP TY 2
37.5' @ 1.25%
CYTBF= 0.8

15" PIPE CULVERTS
RCCP TY 2
16' @ 2.00%
CYTBF= 1.6


15" PIPE CULVERTS
RCCP TY 2
40' @ 1.00%
CYTBF= 3.8

END SECTION TO
BE REMOVED (1 EA.)
PRC FES 15"

END SECTION TO
BE REMOVED (2 EA.)
3 - ELLIPTICAL, ERS 36"
PIPE CULVERTS
RCCP TY 2
68.0' @ 0.41%
CYTBF= 37.1

PRCF END S EL EORS 36"
GRATING FOR CONCRETE FES 36"

FILE NAME = F:\2009\ME090806_Ver\Ver_Phil\CADD\W05_1628\Shes\0162529-shc-DRAIN2.dgn
 USER NAME = M.J. Millenia
 MILLENIA PROFESSIONAL SERVICES



200 22ND Street, Suite 216, Lombard, IL 60148
630.785.0110 voice, 630.839.2566 fax
WWW.MPS-IL.COM

MILLENNIA PROFESSIONAL SERVICES

DESIGNED - TVN	REVISED -
DRAWN - TVN	REVISED -
CHECKED - RPD	REVISED -
DATE - 4/9/2010	REVISED -

**STATE OF ILLINOIS
DEPARTMENT OF TRANSPORTATION**

**U.S. ROUTE 20
EAST OF PLANK ROAD TO WELD ROAD**

DRAINAGE & UTILITY PLANS

SCALE: 1"=50' SHEET NO. OF SHEETS STA. TO STA.

F.A.P. RTE. 345	SECTION 8WRS-2	COUNTY KANE	TOTAL SHEETS 72	SHEET NO. 26
CONTRACT NO. 62529				

DU-2

FED. ROAD DIST. NO. 1 [ILLINOIS] FED. AID PROJECT
F:\2009\ME090806_Ver\Ver_Phil\CADD\W05_1628\Shes\0162529-shc-DRAIN2.dgn