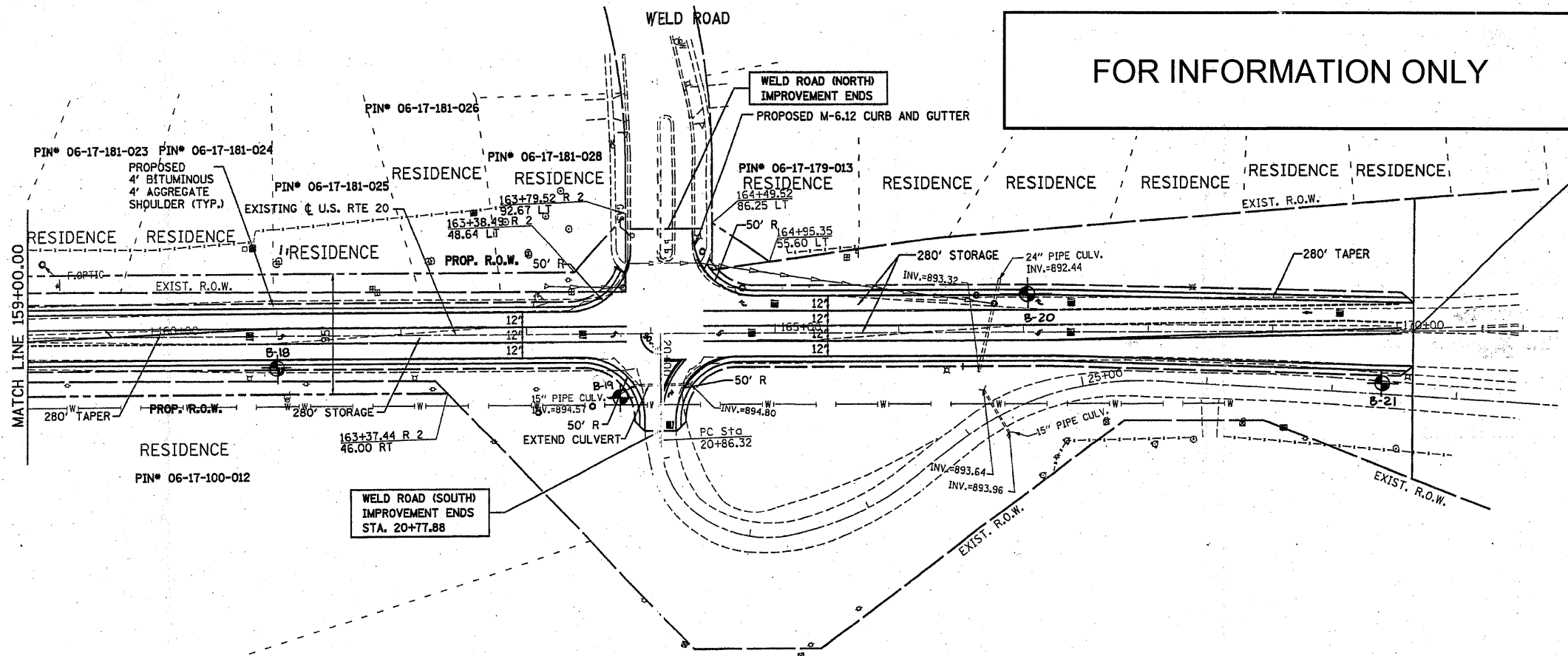


F.A.P. RTE.	SECTION	COUNTY	TOTAL SHEETS	SHEET NO.
345	8WRS-2	KANE	72	49
STA. 159+00.00		TO STA. 170+34.10		
FED. ROAD DIST. NO.	ILLINOIS	FED. AID PROJECT		

FOR INFORMATION ONLY

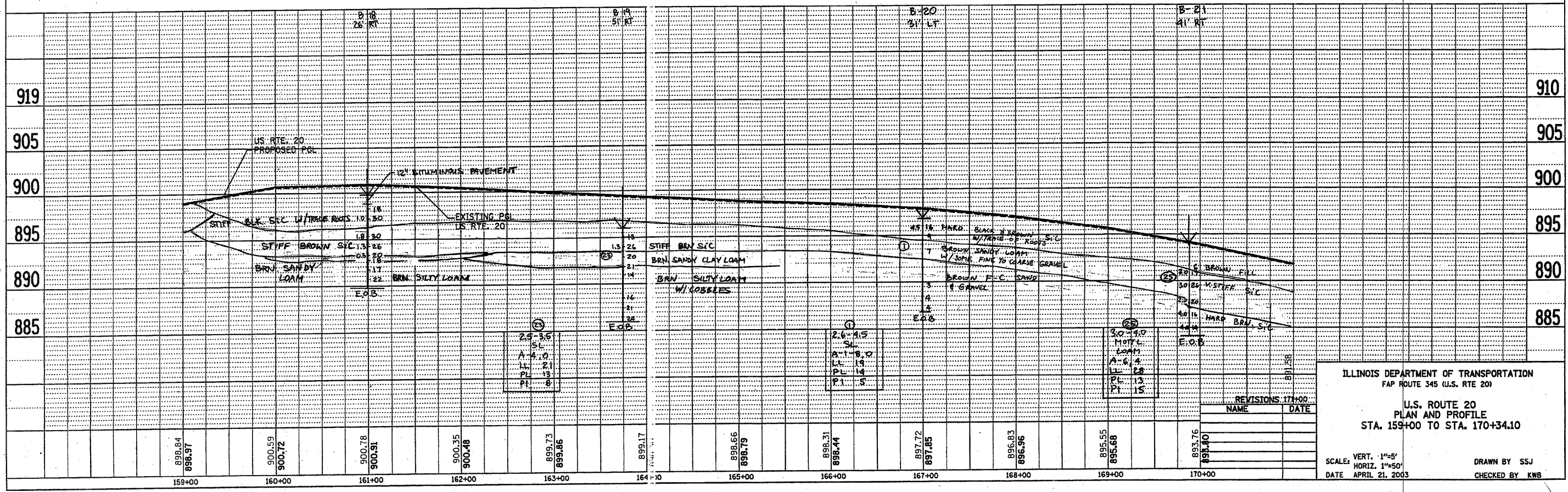


U.S. ROUTE 20
IMPROVEMENT ENDS
STA. 170+12.85

WELD ROAD (SOUTH)
IMPROVEMENT ENDS
STA. 20+77.88

DATE	
BY	
REVISION	
PLANNED	
NOTED	
NO. OF WAY CHECKED	
NO. OF FILE NAME	

DATE	
BY	
REVISION	
PLANNED	
NOTED	
NO. OF WAY CHECKED	
NO. OF FILE NAME	



ILLINOIS DEPARTMENT OF TRANSPORTATION
FAP ROUTE 345 (U.S. RTE 20)
**U.S. ROUTE 20
PLAN AND PROFILE**
STA. 159+00 TO STA. 170+34.10

SCALE: VERT. 1"=5'
HORIZ. 1"=50'
DATE APRIL 21, 2003

DRAWN BY SJJ
CHECKED BY KWB

REVISIONS 17+02	
NAME	DATE