

165+1 = 166

F.A.U. RTE.	SECTION	COUNTY	TOTAL SHEETS	SHEET NO.
3759	04-00038-00-WR	WILL	165	1
FED. ROAD DIST. NO.		ILLINOIS	CONTRACT NO. 63248	

STATE OF ILLINOIS

DEPARTMENT OF TRANSPORTATION DIVISION OF HIGHWAYS

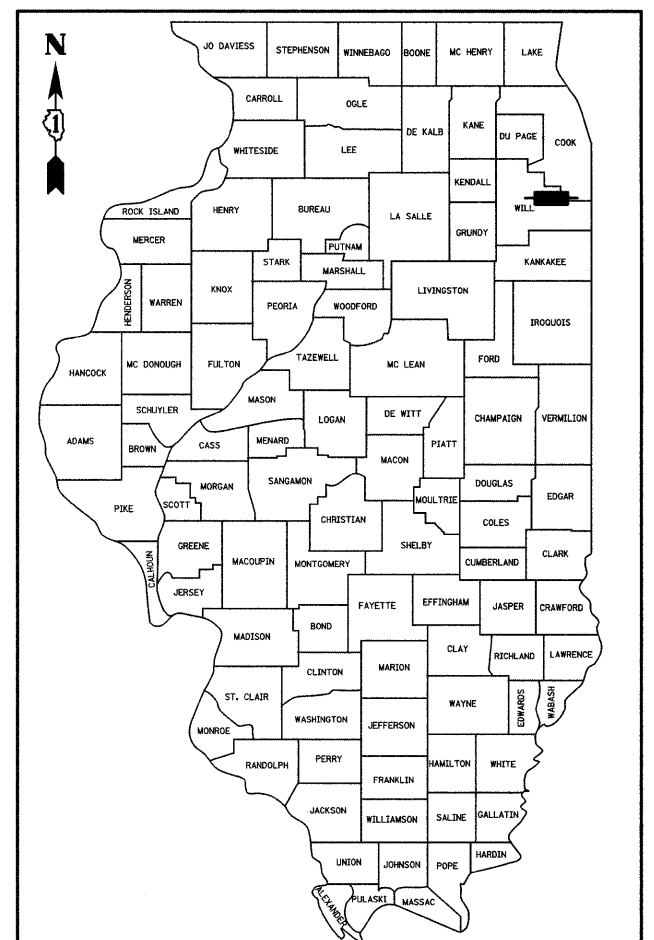
PROPOSED PLANS FOR FEDERAL-AID HIGHWAY

**FAU ROUTE 3759 (CENTER ROAD)
LARAWAY ROAD TO SAUK TRAIL
ROADWAY WIDENING AND RESURFACING
SECTION 04-00038-00-WR
PROJECT NO. ARA-M-9003 (524)
JOB NO. C-91-136-05**

**VILLAGE OF FRANKFORT
WILL COUNTY**

INDEX OF SHEETS

SHEET NO.	DESCRIPTION
1	COVER
2	GENERAL NOTES
3	HIGHWAY STANDARDS AND DISTRICT DETAILS
4-6	SUMMARY OF QUANTITIES
7-11	TYPICAL SECTIONS
12-16	SCHEDULE OF QUANTITIES
17	HORIZONTAL ALIGNMENTS
18	TIES & BENCHMARKS
19-34	PLAN AND PROFILES
35-36	MAINTENANCE OF TRAFFIC
37-44	LANDSCAPING AND EROSION CONTROL PLANS
45-57	DRAINAGE AND UTILITY
58-60	RIGHT-OF-WAY PLATS
61-66	PAVEMENT MARKING PLANS
67-74	BORING LOGS
75	INTERSECTION DETAIL
76	LIGHTING RELOCATION DETAIL
77-78	DETAILS
79-96	DISTRICT DETAILS
97-165	CROSS SECTIONS



LOCATION OF SECTION INDICATED THIS: - [shaded box] -

STATE OF ILLINOIS
DEPARTMENT OF TRANSPORTATION
DIVISION OF HIGHWAYS

APPROVED Paul E. Slom 4-7-10
WARD E. SUGAN
VILLAGE OF FRANKFORT - ASST. VILLAGE ADMINISTRATOR

PASSED APRIL 9, 2010
C. Held Chen-Helber
DISTRICT 1 ENGINEER OF LOCAL ROADS AND STREETS

RELEASING FOR
BID BASED ON
LIMITED REVIEW APRIL 9, 2010
Diana M. O'Keefe
DEPUTY DIRECTOR OF HIGHWAYS, REGION 1 ENGINEER

**PRINTED BY THE AUTHORITY
OF THE STATE OF ILLINOIS**



PROJECT MANAGER: RAYMOND KUMAPLEY (815) 744-4200

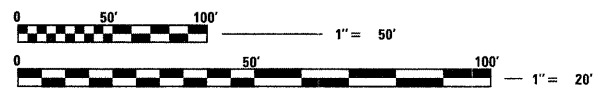
FIELD ENGINEER: MELCHOR MANGOBA (847) 705-4408

DESIGN DESIGNATION - 5150 (20) LOCAL 1.23 (HMA-20)

ADT CENTER ROAD (2006) - 4200
ADT CENTER ROAD (2030) - 6000
ADT LARAWAY ROAD (2006) - 11,100
ADT LARAWAY ROAD (2030) - 18,000

VILLAGE OF FRANKFORT
POLICE DEPARTMENT (815) 469-9435
FIRE DEPARTMENT (815) 469-1700

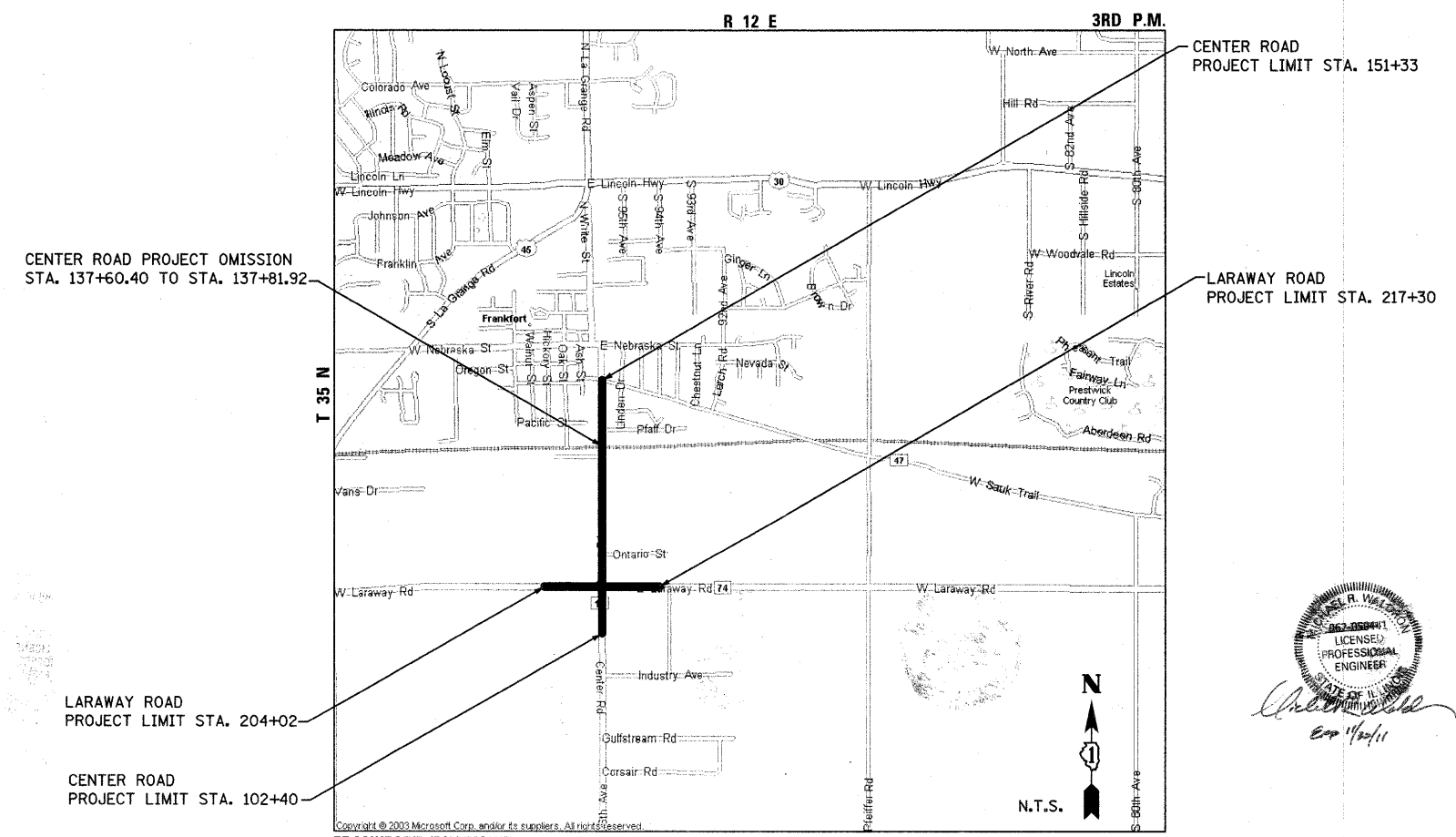
POSTED SPEED LIMIT
CENTER ROAD - 25, 35, 45 MPH
LARAWAY ROAD - 40 MPH



FULL SIZE PLANS HAVE BEEN PREPARED USING STANDARD
ENGINEERING SCALES. REDUCED SIZED PLANS WILL NOT
CONFORM TO STANDARD SCALES. IN MAKING MEASUREMENTS
ON REDUCED PLANS, THE ABOVE SCALES MAY BE USED.

J.U.L.I.E.
JOINT UTILITY LOCATION INFORMATION FOR EXCAVATION
1-800-892-0123
OR 811

CONTRACT NO. 63248



FRANKFORT TOWNSHIP
GROSS PROJECT LENGTH: 4,879 FEET = 0.93 MILES
NET PROJECT LENGTH: 4,957 FEET = 0.92 MILES

