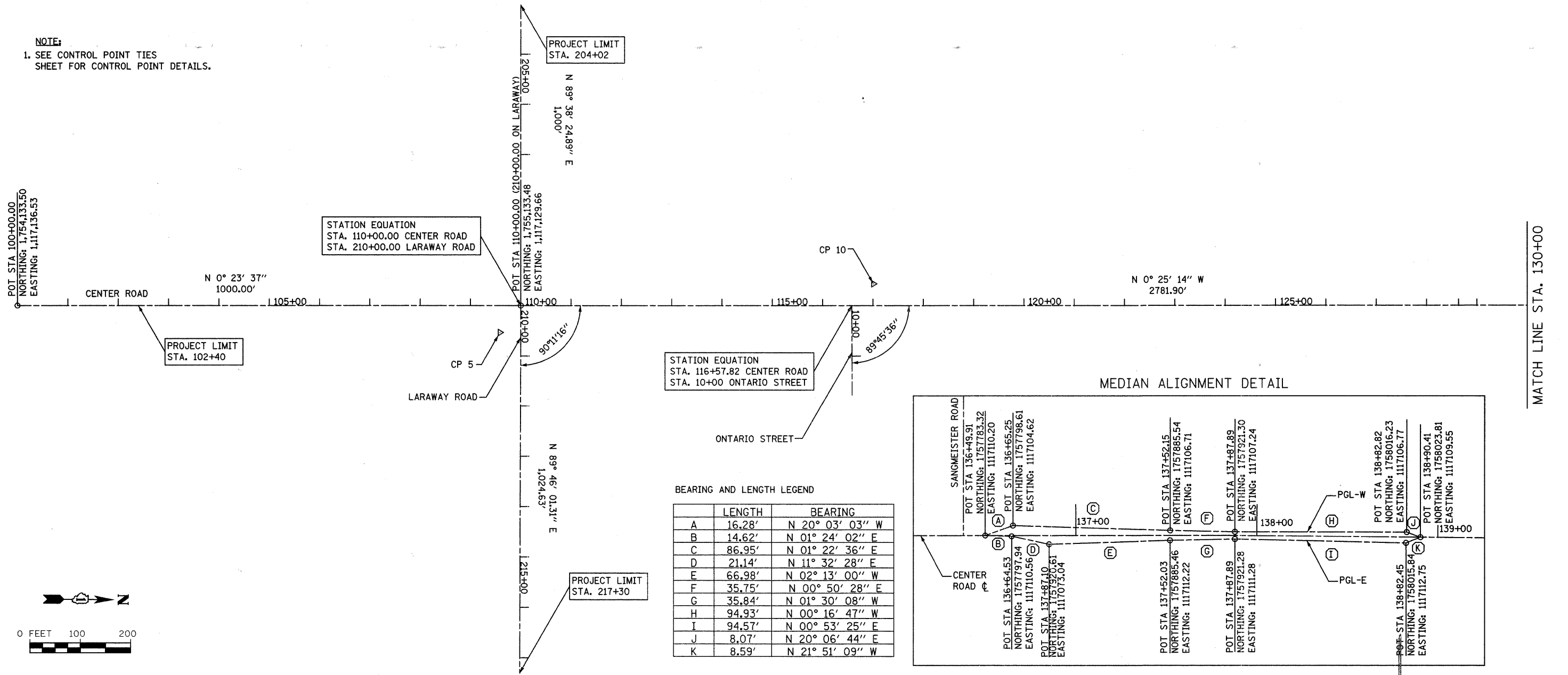
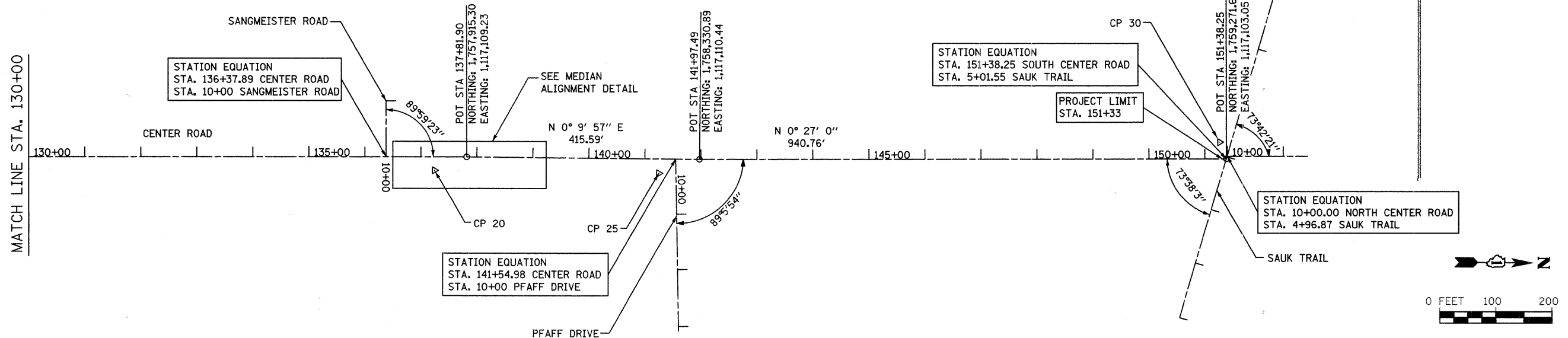
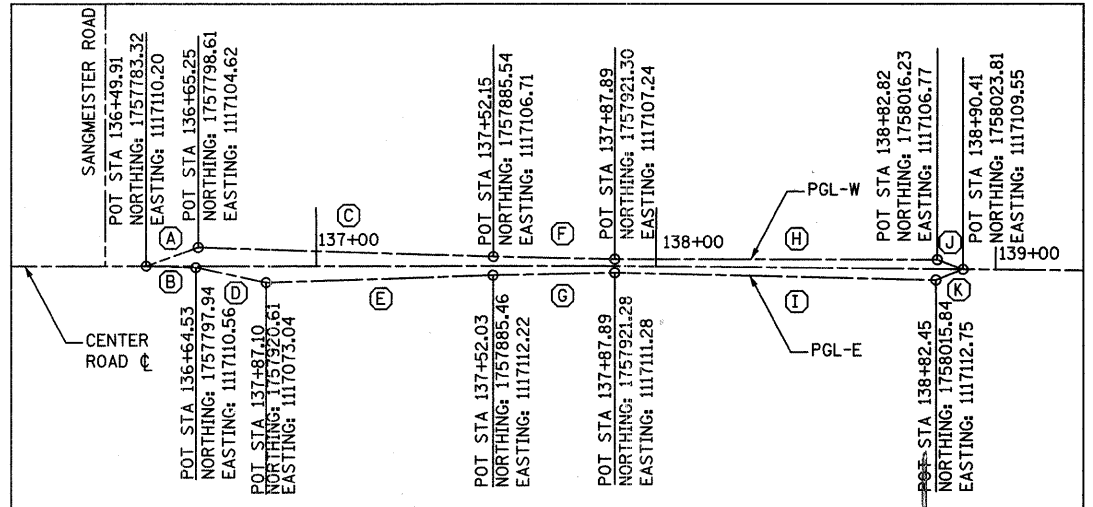


NOTE:
1. SEE CONTROL POINT TIES SHEET FOR CONTROL POINT DETAILS.



BEARING AND LENGTH LEGEND

	LENGTH	BEARING
A	16.28'	N 20° 03' 03" W
B	14.62'	N 01° 24' 02" E
C	86.95'	N 01° 22' 36" E
D	21.14'	N 11° 32' 28" E
E	66.98'	N 02° 13' 00" W
F	35.75'	N 00° 50' 28" E
G	35.84'	N 01° 30' 08" W
H	94.93'	N 00° 16' 47" W
I	94.57'	N 00° 53' 25" E
J	8.07'	N 20° 06' 44" E
K	8.59'	N 21° 51' 09" W



FILE NAME = s:\j\16620-6659\6620-00A\micro\Sheets\horiz_alignments.dgn

STRAND
CONSULTANTS, INC.
ENGINEERS

1170 SOUTH HOUBOLT ROAD JOLIET, ILLINOIS 60431 (815) 744-4200	USER NAME = adamm	DESIGNED -	REVISED -
	PLOT SCALE = 100.0000' / IN.	DRAWN -	REVISED -
	PLOT DATE = 3/31/2018	CHECKED -	REVISED -
		DATE -	REVISED -

**STATE OF ILLINOIS
DEPARTMENT OF TRANSPORTATION**

HORIZONTAL ALIGNMENT	
SCALE: AS SHOWN	SHEET NO. OF SHEETS STA. TO STA.

F.A.U. RTE. 3759	SECTION 04-00038-00-WR	COUNTY WILL	TOTAL SHEETS 165	SHEET NO. 17
CONTRACT NO. 63248			ILLINOIS FED. AID PROJECT	