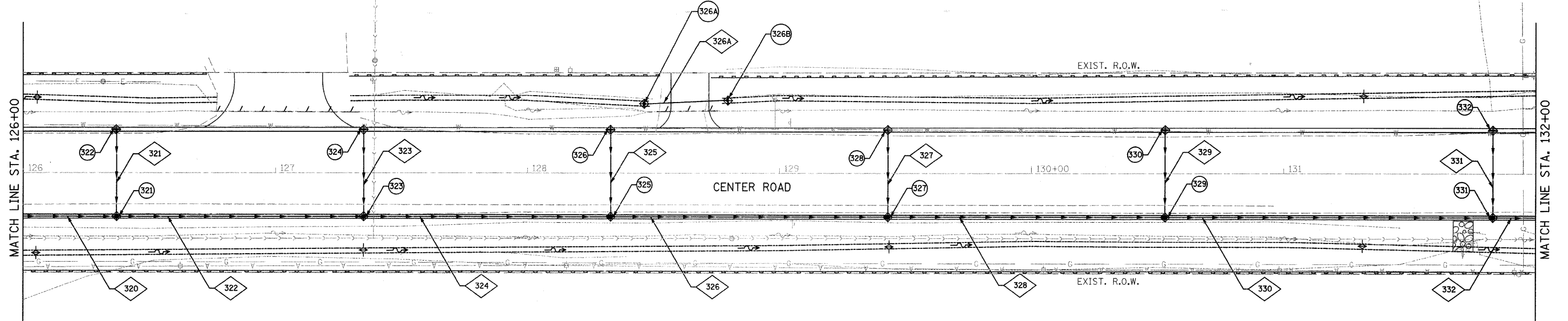


NUMERICAL PLOTTED CHECKED
 NOTE BOOK ALIGNED RECORDED
 NO. FILE NAME

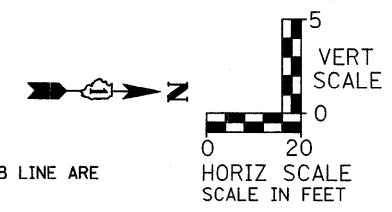
FILE NAME = h:\1170\66300-66399\66328\084\micro\p\drainage\p & p\DrainageCenter_P&P-08.dgn



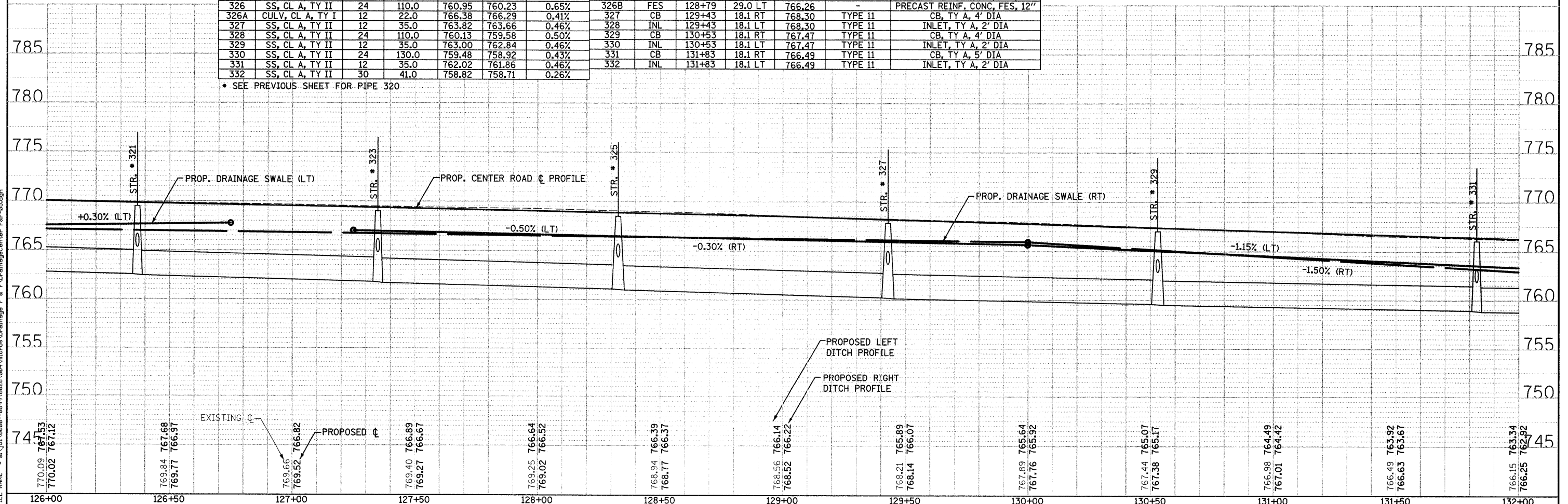
SEWER PIPE SCHEDULE						
STR NO.	PIPE MATERIAL	PIPE SIZE (IN)	PIPE LENGTH (FT)	INVERT ELEVATION (PIPE ONLY)		Slope (%)
				UP	DOWN	
321	SS, CL A, TY II	12	35.0	765.48	765.32	0.46%
322	SS, CL A, TY II	24	98.0	762.42	761.78	0.65%
323	SS, CL A, TY II	12	35.0	764.98	764.82	0.46%
324	SS, CL A, TY II	24	98.0	761.68	761.05	0.64%
325	SS, CL A, TY II	12	35.0	764.49	764.33	0.46%
326	SS, CL A, TY II	24	110.0	760.95	760.23	0.65%
326A	CULV, CL A, TY I	12	22.0	766.38	766.29	0.41%
327	SS, CL A, TY II	12	35.0	763.82	763.66	0.46%
328	SS, CL A, TY II	24	110.0	760.13	759.58	0.50%
329	SS, CL A, TY II	12	35.0	763.00	762.84	0.46%
330	SS, CL A, TY II	24	130.0	759.48	758.92	0.43%
331	SS, CL A, TY II	12	35.0	762.02	761.86	0.46%
332	SS, CL A, TY II	30	41.0	758.82	758.71	0.26%

DRAINAGE STRUCTURE SCHEDULE						
STR NO.	STR TY	STATION	OFFSET	RIM EL.	CASTING TYPE	TYPE OF WORK TO BE COMPLETED
321	CB	126+37	18.1 RT	769.95	TYPE II	CB, TY A, 4' DIA
322	INL	126+37	18.1 LT	769.95	TYPE II	INLET, TY A, 2' DIA
323	CB	127+35	18.1 RT	769.46	TYPE II	CB, TY A, 4' DIA
324	INL	127+35	18.1 LT	769.46	TYPE II	INLET, TY A, 2' DIA
325	CB	128+33	18.1 RT	768.97	TYPE II	CB, TY A, 4' DIA
326	INL	128+33	18.1 LT	768.97	TYPE II	INLET, TY A, 2' DIA
326A	FES	128+46	27.7 LT	766.40	-	PRECAST REINF. CONC, FES, 12"
326B	FES	128+79	29.0 LT	766.26	-	PRECAST REINF. CONC, FES, 12"
327	CB	129+43	18.1 RT	768.30	TYPE II	CB, TY A, 4' DIA
328	INL	129+43	18.1 LT	768.30	TYPE II	INLET, TY A, 2' DIA
329	CB	130+53	18.1 RT	767.47	TYPE II	CB, TY A, 4' DIA
330	INL	130+53	18.1 LT	767.47	TYPE II	INLET, TY A, 2' DIA
331	CB	131+83	18.1 RT	766.49	TYPE II	CB, TY A, 5' DIA
332	INL	131+83	18.1 LT	766.49	TYPE II	INLET, TY A, 2' DIA

* SEE PREVIOUS SHEET FOR PIPE 320



NOTE:
 RIM ELEVATION AND OFFSET FOR STRUCTURES LOCATED IN CURB LINE ARE MEASURED TO THE BACK AND TOP OF CURB.



STRAND ASSOCIATES, INC.
 1170 SOUTH HOUBOLT ROAD
 JOLIET, ILLINOIS 60431
 (815) 744-4200

USER NAME = edamm
 DESIGNED -
 CHECKED -
 DRAWN -
 CHECKED -
 PLOT SCALE = 20.0000' / IN.
 PLOT DATE = 2/21/2012

DESIGNED -
 CHECKED -
 DRAWN -
 CHECKED -
 REVISED -
 REVISED -
 REVISED -
 REVISED -

STATE OF ILLINOIS
 DEPARTMENT OF TRANSPORTATION

CENTER ROAD DRAINAGE AND UTILITY PLAN AND PROFILE

SCALE: AS SHOWN SHEET NO. OF SHEETS STA. TO STA.

F.A.U. RTE. 3759	SECTION 04-00038-00-WR	COUNTY WILL	TOTAL SHEETS 165	SHEET NO. 49
CONTRACT NO. 63248			ILLINOIS FED. AID PROJECT	