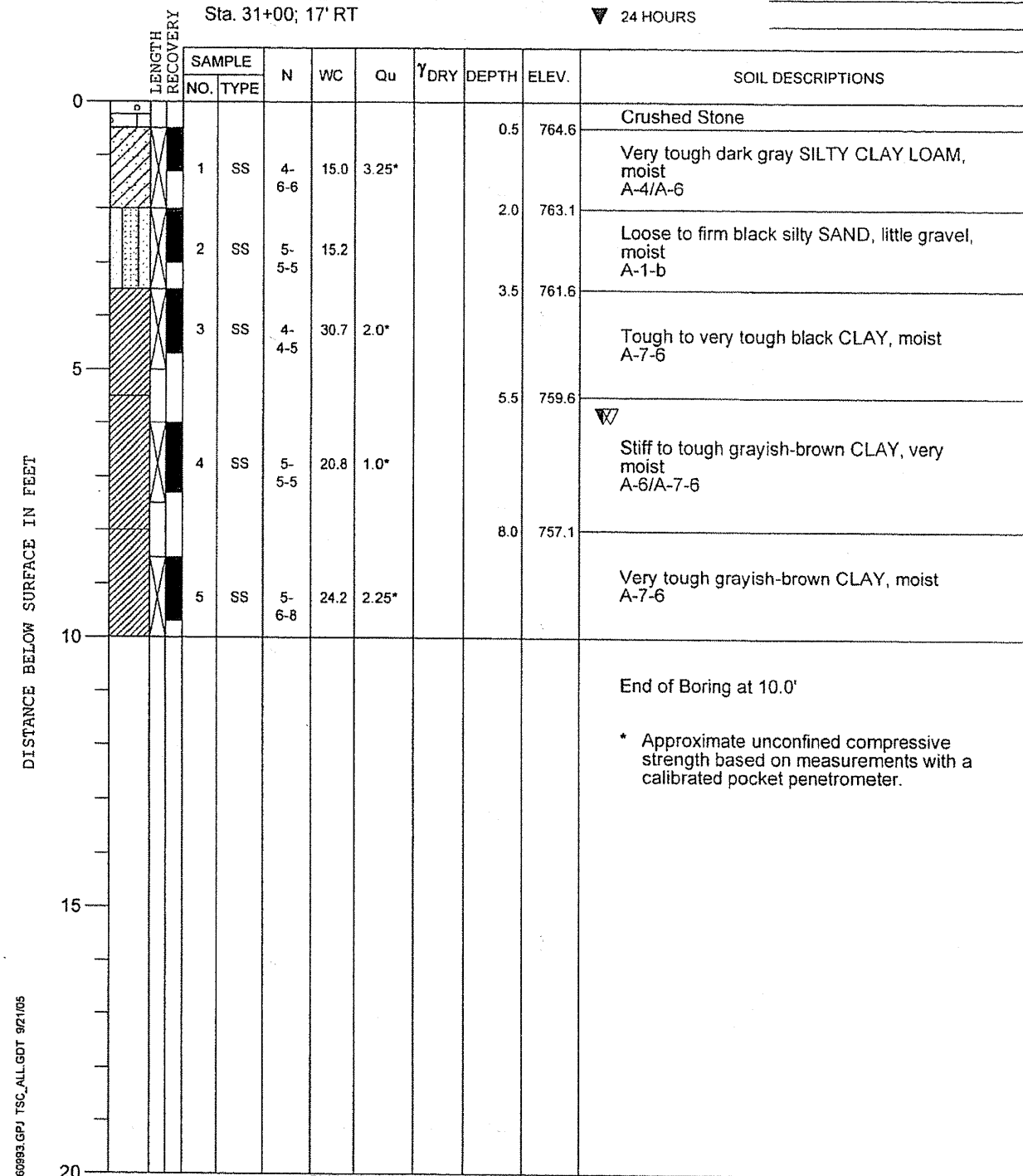


PROJECT **Center Road Improvements, Laraway Rd. to Sauk Trail., Frankfort, Illinois**

CLIENT **Strand Associates, Inc., Joliet, Illinois**

BORING **9** DATE STARTED **7-23-04** DATE COMPLETED **7-23-04** JOB **L-60,993**

ELEVATIONS WATER LEVEL OBSERVATIONS
 GROUND SURFACE **765.1** WHILE DRILLING **6.0'**
 END OF BORING **755.1** AT END OF BORING **6.0'**
 24 HOURS



DRILL RIG NO. **282**

Division lines between deposits represent approximate boundaries between soil types; in-situ, the transition may be gradual.

End of Boring at 10.0'

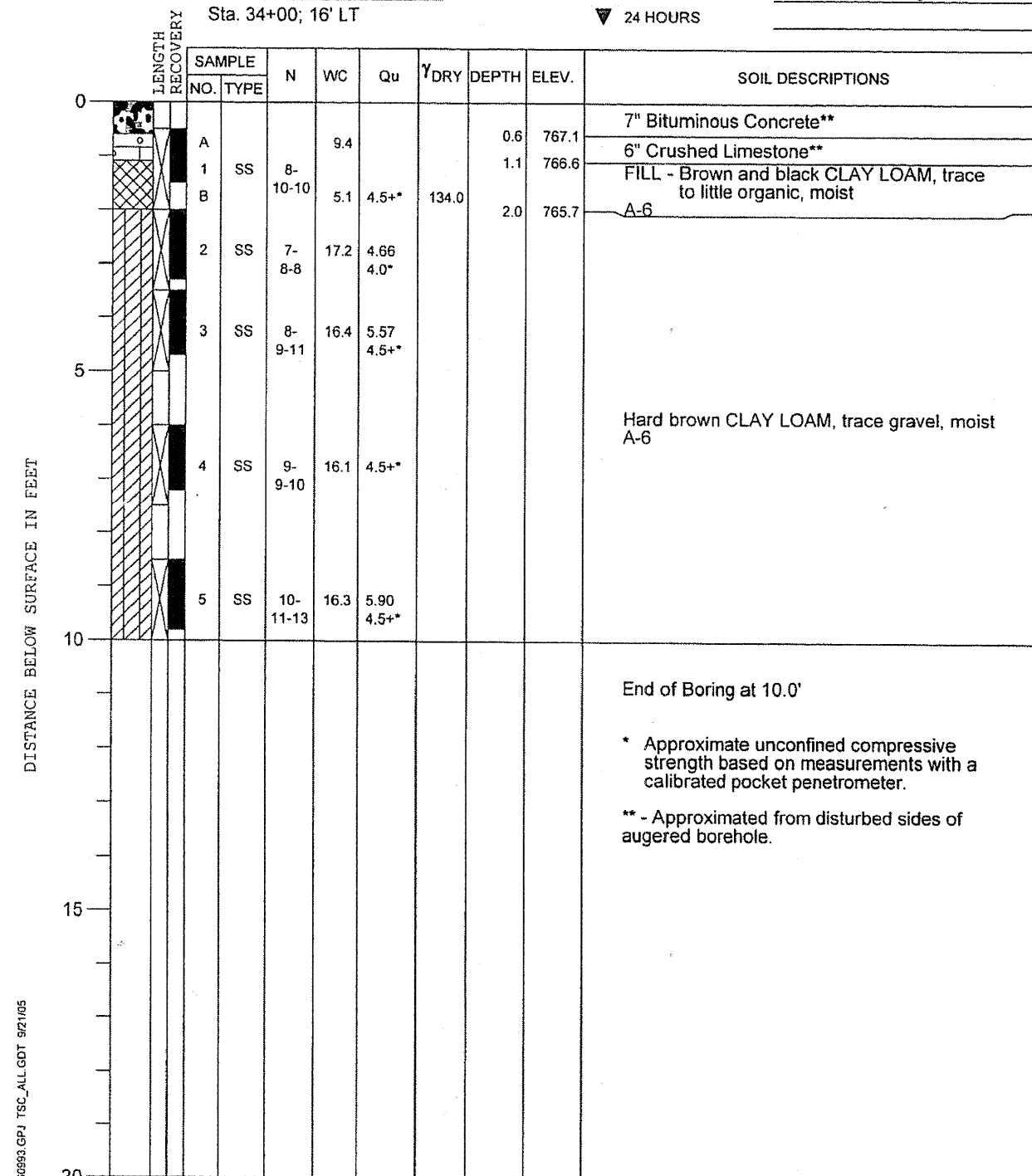
* Approximate unconfined compressive strength based on measurements with a calibrated pocket penetrometer.

PROJECT **Center Road Improvements, Laraway Rd. to Sauk Trail., Frankfort, Illinois**

CLIENT **Strand Associates, Inc., Joliet, Illinois**

BORING **10** DATE STARTED **7-23-04** DATE COMPLETED **7-23-04** JOB **L-60,993**

ELEVATIONS WATER LEVEL OBSERVATIONS
 GROUND SURFACE **767.7** WHILE DRILLING **Dry**
 END OF BORING **757.7** AT END OF BORING **Dry**
 24 HOURS



DRILL RIG NO. **282**

Division lines between deposits represent approximate boundaries between soil types; in-situ, the transition may be gradual.

End of Boring at 10.0'

* Approximate unconfined compressive strength based on measurements with a calibrated pocket penetrometer.

** - Approximated from disturbed sides of augered borehole.

SEE PLAN AND PROFILE DRAWINGS FOR BORING LOCATIONS



| | | | |
|---|-----------------------------|------------|-----------|
| 1170 SOUTH HOUBOLT ROAD JOLIET, ILLINOIS 60431 (815) 744-4200 | USER NAME = adam | DESIGNED - | REVISED - |
| | PLOT SCALE = 20,0000' / IN. | DRAWN - | REVISED - |
| | PLOT DATE = 3/31/22/2 | CHECKED - | REVISED - |
| | | DATE - | REVISED - |

STATE OF ILLINOIS
DEPARTMENT OF TRANSPORTATION

BORING LOGS

| | | | | | | | |
|-----------------|---------------------|--------------|--|------------------------|-------------|------------------|--------------|
| SCALE: AS SHOWN | SHEET NO. OF SHEETS | STA. TO STA. | F.A.U. RTE. 3759 | SECTION 04-00038-00-WR | COUNTY WILL | TOTAL SHEETS 165 | SHEET NO. 71 |
| | | | CONTRACT NO. 63248 | | | | |
| | | | FED. ROAD DIST. NO. ILLINOIS' FED. AID PROJECT | | | | |