

INDEX OF SHEETS

SHEET NO.	SHEET NAME
1	COVER
2	GENERAL NOTES & LIST OF HIGHWAY STANDARDS
3	SUMMARY OF QUANTITIES
4	TYPICAL CROSS SECTIONS AND DETAILS
5	173RD STREET, ELM DRIVE PLANS
6	ELM DRIVE PLAN
7	CURB OR CURB AND GUTTER REMOVAL AND REPLACEMENT, BD-24, DISTRICT ONE
8	BUTT JOINT AND HMA TAPER DETAILS, BD-32, DISTRICT ONE
9	DISTRICT ONE, TYPICAL PAVEMENT MARKINGS, TC-13

FAU RTE.	SECTION	COUNTY	TOTAL SHEETS	SHEET NO.
1617	09-00077-00-RS	COOK	9	1
STA.		TO STA.		
FED. ROAD DIST. NO.		ILLINOIS		

STATE OF ILLINOIS
DEPARTMENT OF TRANSPORTATION
DIVISION OF HIGHWAYS
**PLANS FOR PROPOSED
FEDERAL AID HIGHWAY**
VILLAGE OF HAZEL CREST
FAU 1617 (173RD ST. AND ELM DR.),
FROM KEDZIE AVENUE TO LAUREL LANE
PAVEMENT RESURFACING
COOK COUNTY
SECTION 09-00077-00-RS
PROJECT ARA-9003 (342)
C-91-659-09



GLOBAL TROTTERS ENGINEERING CORP.: CHANDRA S. TRIVEDI (312)697-3580

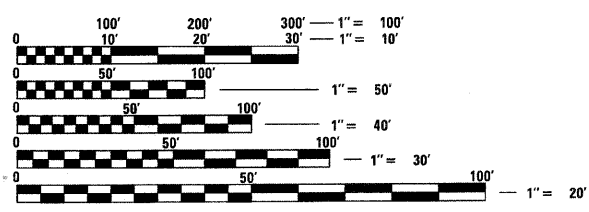
FIELD ENGINEER : MEL MANGOBA (847) 705-4408

PROJECT LOCATED IN VILLAGE OF HAZEL CREST

DESIGN DESIGNATION:
390(28) COLLECTOR 2.51 (HMA8)

TRAFFIC DATA:
ADT=375

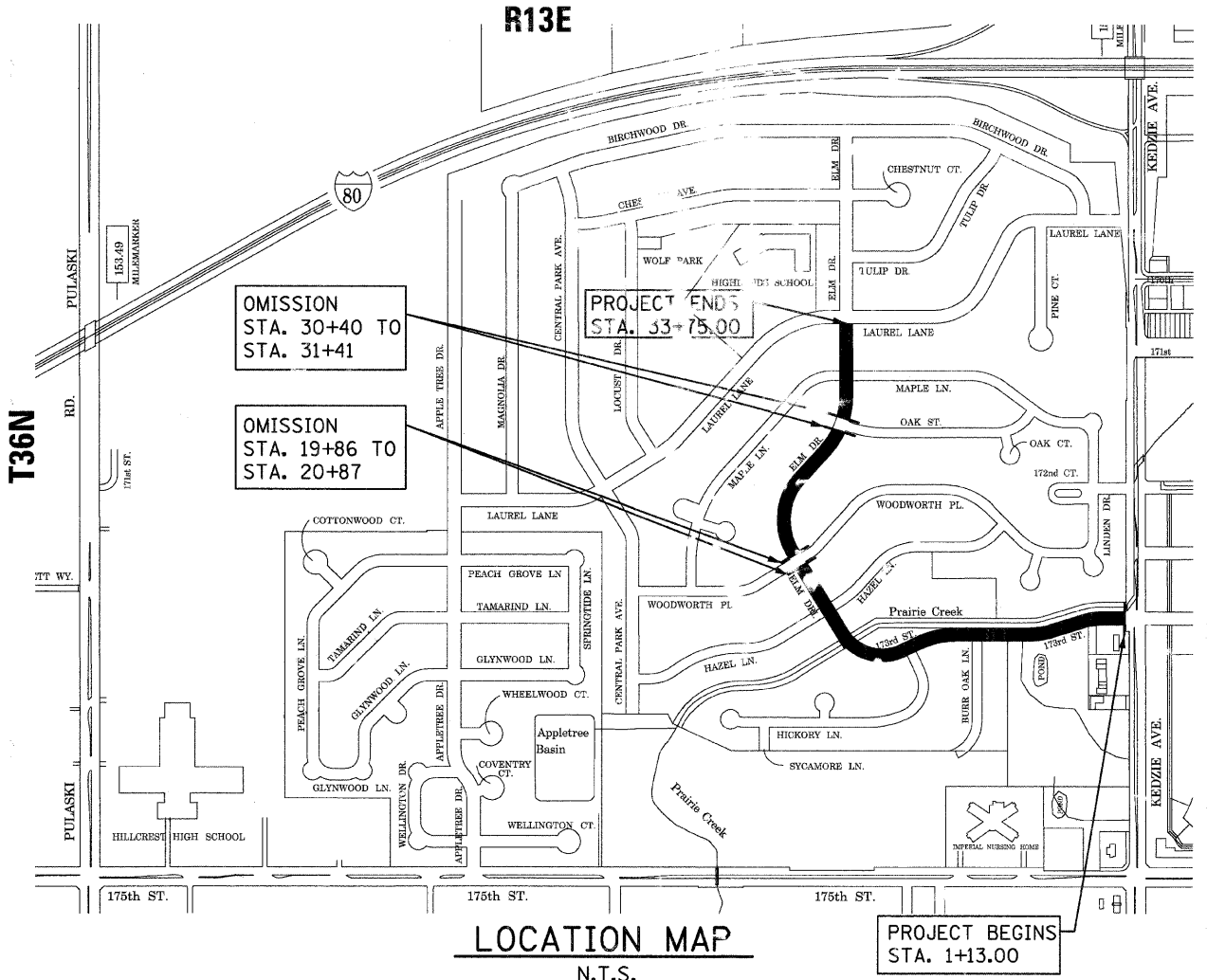
SPEED LIMIT ON 173RD STREET / ELM DRIVE - 25 MPH



FULL SIZE PLANS HAVE BEEN PREPARED USING STANDARD ENGINEERING SCALES. REDUCED SIZED PLANS WILL NOT CONFORM TO STANDARD SCALES. IN MAKING MEASUREMENTS ON REDUCED PLANS, THE ABOVE SCALES MAY BE USED.

J.U.L.I.E.
JOINT UTILITY LOCATION INFORMATION FOR EXCAVATION
1-800-892-0123

CONTRACT NO. 63308



GROSS LENGTH OF PROJECT = 3,375.00 FT = 0.64 MILE
NET LENGTH OF PROJECT = 3,175.00 FT = 0.60 MILE

STATE OF ILLINOIS
DEPARTMENT OF TRANSPORTATION
DIVISION OF HIGHWAYS

Approved: *Robert D. Donaldson* 10/22/2009 DATE
ROBERT D. DONALDSON, MAYOR
Village President, Village of Hazel Crest

Passed: *C. Hecht* OCTOBER 27, 2009 DATE
C. Hecht
District 1 Engineer of Local Roads & Streets

Releasing for Bid Based on Limited Review: *Diana M. O'Keefe* OCTOBER 29, 2009 DATE
Diana M. O'Keefe, PE
Deputy Director of Highways, Region 1 Engineer



LICENSE EXPIRATION DATE: 11/30/09

N. Chowdhury

PRINTED BY AUTHORITY OF THE STATE OF ILLINOIS