

FOR INDEX OF SHEETS, SEE SHEET NO. 2

PROJECT LOCATED IN THE VILLAGE OF CARY

STATE OF ILLINOIS
DEPARTMENT OF TRANSPORTATION
DIVISION OF HIGHWAYS

PLANS FOR PROPOSED
FEDERAL AID HIGHWAY
F.A.U. 4051 THREE OAKS ROAD AND
F.A.U. 4052 SILVER LAKE ROAD

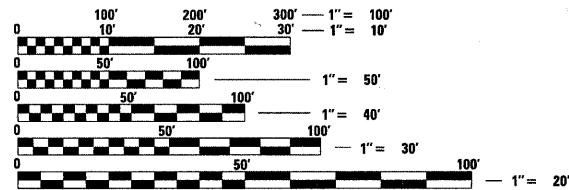
INTERSECTION IMPROVEMENTS

SECTION NO.: 09-00058-00-CH
PROJECT NO.: ARA-9003(635)
JOB NO.: C-91-511-10
VILLAGE OF CARY
McHENRY COUNTY

TRAFFIC DATA

THREE OAKS ROAD
POSTED & DESIGN SPEED = 30 MPH
2009 ADT = 9,500
URBAN COLLECTOR

SILVER LAKE ROAD
POSTED & DESIGN SPEED = 30-35 MPH
2009 ADT = 12,500
URBAN COLLECTOR



FULL SIZE PLANS HAVE BEEN PREPARED USING STANDARD ENGINEERING SCALES. REDUCED SIZED PLANS WILL NOT CONFORM TO STANDARD SCALES. IN MAKING MEASUREMENTS ON REDUCED PLANS, THE ABOVE SCALES MAY BE USED.

BAXTER & WOODMAN, INC
STATE OF ILLINOIS - PROFESSIONAL DESIGN FIRM
LICENSE NO. - 184-001121 - EXPIRES 4/30/2011

J.U.L.I.E. DESIGN STAGE REQUEST
DIG. No. A2592319



CONTACT JULIE AT 811 OR 800-892-0123 WITH THE FOLLOWING:
COUNTY = McHENRY
CITY-TWNSHP. = CARY-ALGONQUIN
SEC. & 1/4 SEC. NO. = SEC 18 NW & NE 1/4, T43N, R9E
48 HOURS (2 working days) BEFORE YOU DIG

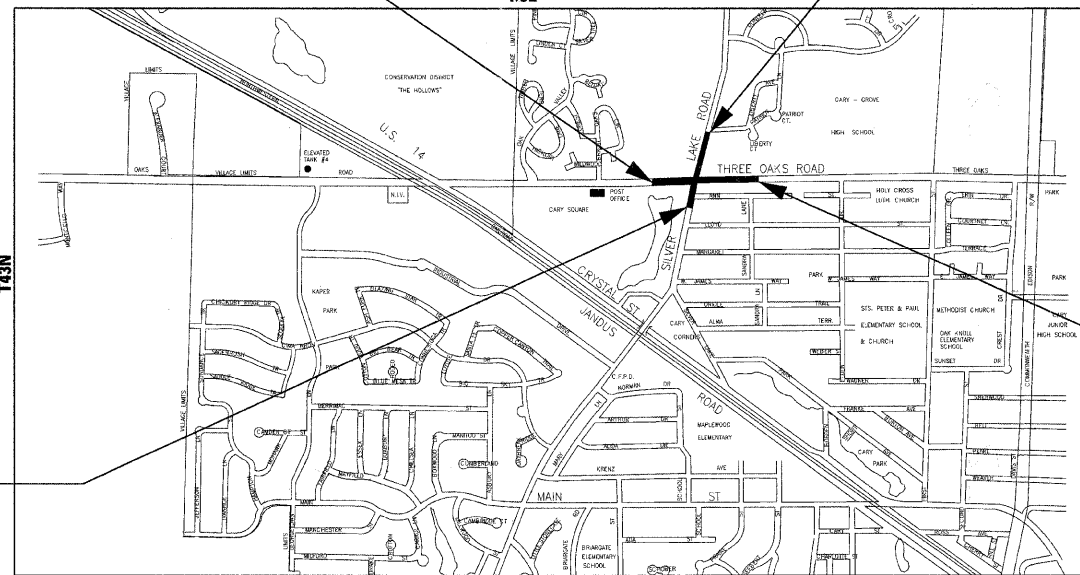
F.A.U. ROUTE 4052
SILVER LAKE ROAD
BEGIN IMPROVEMENTS
STA 6+56

F.A.U. ROUTE 4051
THREE OAKS ROAD
BEGIN IMPROVEMENTS
STA 25+31

F.A.U. ROUTE 4052
SILVER LAKE ROAD
END IMPROVEMENTS
STA 16+25

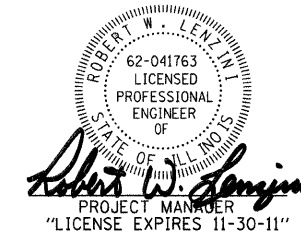
F.A.U. ROUTE 4051
THREE OAKS ROAD
END IMPROVEMENTS
STA 37+20

LOCATION MAP
(NOT TO SCALE)



ALGONQUIN TOWNSHIP
GROSS LENGTH OF IMPROVEMENT = 2,158 LF OR 0.409 MILES
NET LENGTH OF IMPROVEMENT = 2,158 LF OR 0.409 MILES

3RD P.M.



Robert W. Lenzi
PROJECT MANAGER
"LICENSE EXPIRES 11-30-11"

F.A.U. RTE.	SECTION	COUNTY	TOTAL SHEETS	SHEET NO.
•	09-00058-00-CH	McHENRY	53	1
THREE OAKS ROAD STA. 25+31 TO STA. 37+20				
SILVER LAKE ROAD STA. 6+56 TO STA. 16+25				
FED. ROAD DIST. NO. 1	ILLINOIS C-91-511-10	FED AID PROJECT ARA-9003(635)		
• F.A.U. 4051 THREE OAKS ROAD				
• F.A.U. 4052 SILVER LAKE ROAD				
CONTRACT NO. 63381				



LOCATION OF SECTION INDICATED THUS: [Symbol]

STATE OF ILLINOIS
DEPARTMENT OF TRANSPORTATION
DIVISION OF HIGHWAYS

APPROVED 3-2-10
Tom B. Klein
VILLAGE OF CARY, MAYOR

PASSED MARCH 31, 2010
Cheryl Heston
DISTRICT 1 ENGINEER OF LOCAL ROADS AND STREETS

RELEASING FOR BID
BASED ON LIMITED
REVIEW APRIL 1, 2010
Diane M. O'Keefe
DEPUTY DIRECTOR OF
HIGHWAYS, REGION 1 ENGINEER

PRINTED BY THE AUTHORITY
OF THE STATE OF ILLINOIS

CONTRACT NO. 63381

Burlington, Wisconsin 262.763.7834 Chicago, Illinois 312.578.0050 Crystal Lake, Illinois 815.459.1260 DeKalb, Illinois 815.787.3111 Grayslake, Illinois 847.223.5088 Itasca, Illinois 630.773.1870 Madison, Wisconsin 608.347.1542 Mokena, Illinois 708.478.2090 Plainfield, Illinois 815.609.7425

(OFFICE WHICH PREPARED PLANS)

B&W PROJECT NO.: 060197.41 DATE: 03/01/10

COPYRIGHT © 2008 BY BAXTER & WOODMAN, INC.
 STATE OF ILLINOIS - PROFESSIONAL DESIGN FIRM
 LICENSE NO. 184-001121 - EXPIRES 4/30/2011
 ASSOCIATE FIELD ENGINEER: KEVIN STALLWORTH, P.E. 847-705-4168