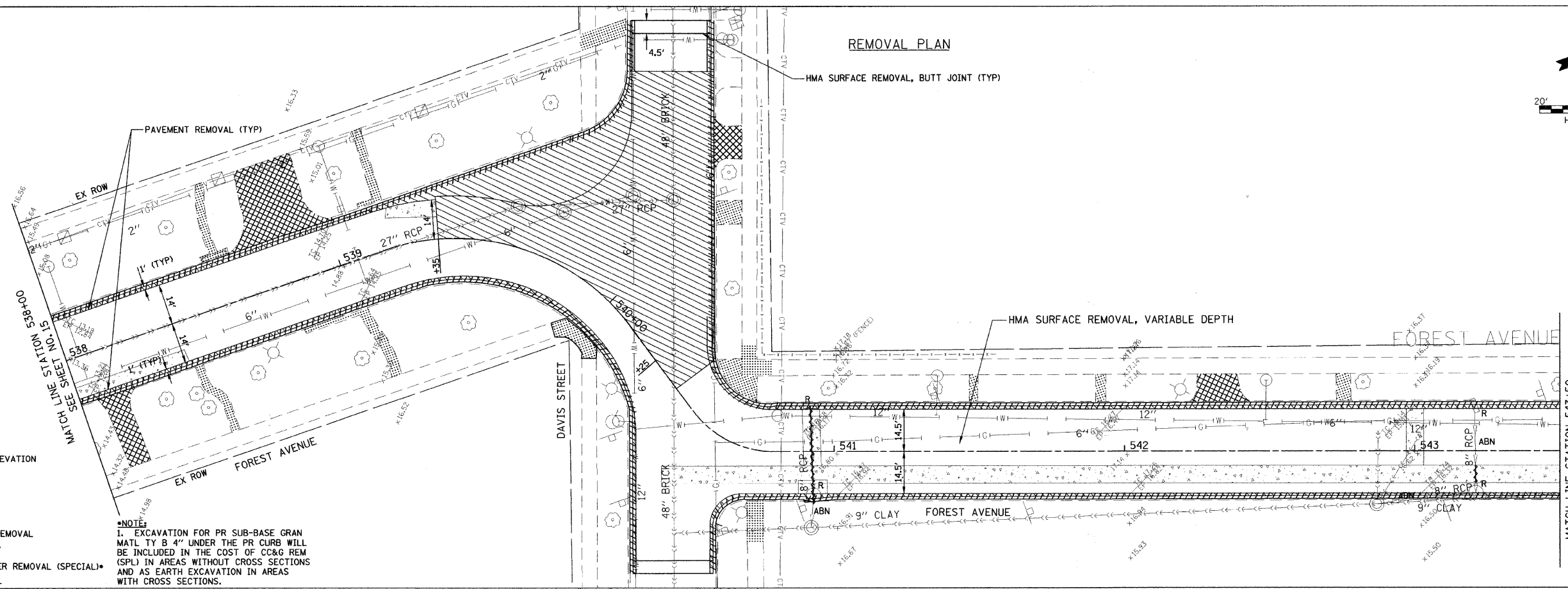


**REMOVAL PLAN**



R - REMOVE STRUCTURE  
 ABN - ABANDON SEWER  
 M.E. - MATCH TO EXISTING ELEVATION

**REMOVAL LEGEND**

- PAVEMENT REMOVAL
- SIDEWALK REMOVAL
- DRIVEWAY PAVEMENT REMOVAL
- CLASS D PATCHING, 9"
- COMB CURB AND GUTTER REMOVAL (SPECIAL)
- STORM SEWER REMOVAL

**NOTE:**  
 1. EXCAVATION FOR PR SUB-BASE GRAN MATL TY B 4" UNDER THE PR CURB WILL BE INCLUDED IN THE COST OF CC&G REM (SPL) IN AREAS WITHOUT CROSS SECTIONS AND AS EARTH EXCAVATION IN AREAS WITH CROSS SECTIONS.

**IMPROVEMENT LEGEND**

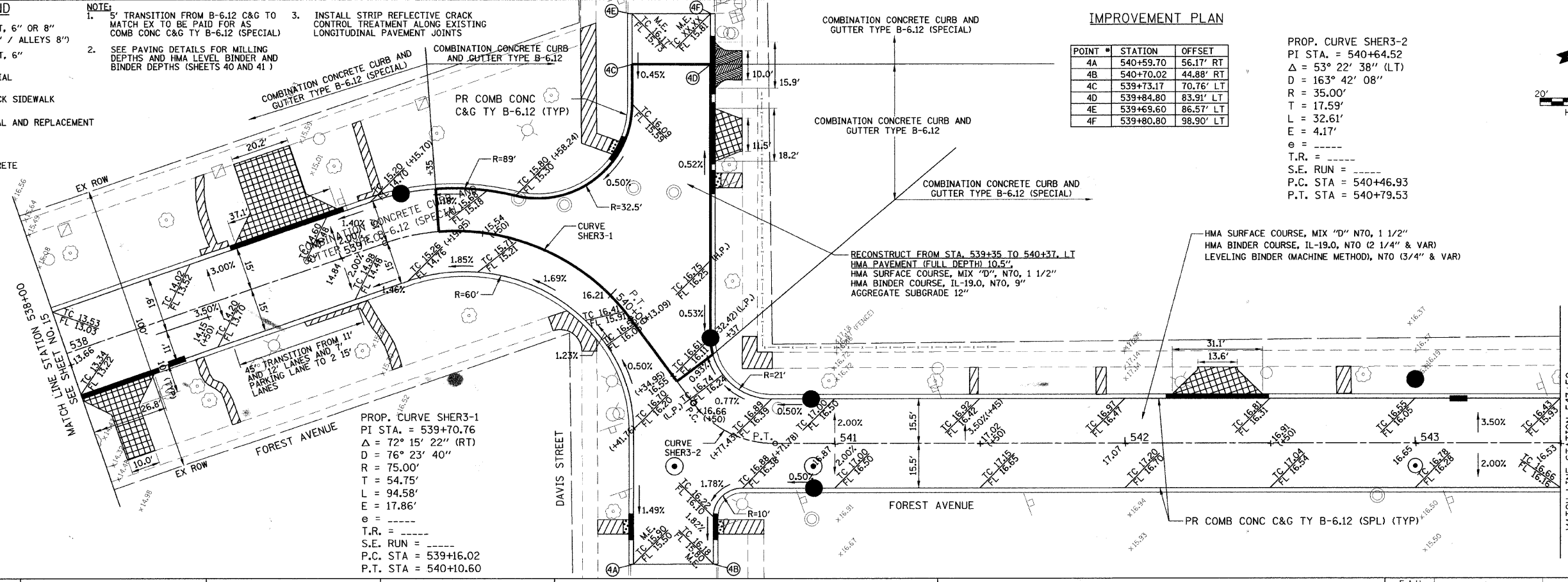
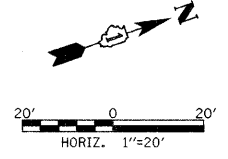
- PCC DRIVEWAY PAVEMENT, 6" OR 8" (RESIDENTIAL APRONS 6" / ALLEYS 8")
- HMA DRIVEWAY PAVEMENT, 6"
- PCC SIDEWALK 5", SPECIAL
- REMOVE AND RELAY BRICK SIDEWALK
- BRICK DRIVEWAY REMOVAL AND REPLACEMENT
- DETECTABLE WARNINGS
- DEPRESSED COMB. CONCRETE CURB AND GUTTER

**NOTE:**  
 1. 5' TRANSITION FROM B-6.12 C&G TO MATCH EX TO BE PAID FOR AS COMB CONC C&G TY B-6.12 (SPECIAL)  
 2. SEE PAVING DETAILS FOR MILLING DEPTHS AND HMA LEVEL BINDER AND BINDER DEPTHS (SHEETS 40 AND 41)  
 3. INSTALL STRIP REFLECTIVE CRACK CONTROL TREATMENT ALONG EXISTING LONGITUDINAL PAVEMENT JOINTS

**IMPROVEMENT PLAN**

POINT	STATION	OFFSET
4A	540+59.70	56.17' RT
4B	540+70.02	44.88' RT
4C	539+73.17	70.76' LT
4D	539+84.80	83.91' LT
4E	539+69.60	86.57' LT
4F	539+80.80	98.90' LT

PROP. CURVE SHER3-2  
 PI STA. = 540+64.52  
 $\Delta = 53^\circ 22' 38''$  (LT)  
 $D = 163' 42' 08''$   
 $R = 35.00'$   
 $T = 17.59'$   
 $L = 32.61'$   
 $E = 4.17'$   
 $\theta =$   
 $T.R. =$   
 $S.E. RUN =$   
 P.C. STA = 540+46.93  
 P.T. STA = 540+79.53



PROP. CURVE SHER3-1  
 PI STA. = 539+70.76  
 $\Delta = 72^\circ 15' 22''$  (RT)  
 $D = 76^\circ 23' 40''$   
 $R = 75.00'$   
 $T = 54.75'$   
 $L = 94.58'$   
 $E = 17.86'$   
 $\theta =$   
 $T.R. =$   
 $S.E. RUN =$   
 P.C. STA = 539+16.02  
 P.T. STA = 540+10.60

FILE NAME - #FILE#	USER NAME - #USER#	DESIGNED - CEC	REVISED -	<b>STATE OF ILLINOIS DEPARTMENT OF TRANSPORTATION</b>		<b>SHERIDAN ROAD / FOREST AVENUE REMOVAL AND IMPROVEMENT PLAN</b>		F.A.U. RTE.	SECTION	COUNTY	TOTAL SHEETS	SHEET NO.
		DRAWN - NFT	REVISED -					2865	08-00250-02-PV	COOK	79	16
		CHECKED - DWB	REVISED -	CONTRACT NO. 63417								
		DATE - 04/09/2010	REVISED -	SCALE:		SHEET NO. 4 OF 10 SHEETS	STA. TO STA.	FED. ROAD DIST. NO. ILLINOIS FED. AID PROJECT				