

REMOVAL LEGEND

- PAVEMENT REMOVAL
- SIDEWALK REMOVAL
- DRIVEWAY PAVEMENT REMOVAL
- CLASS D PATCHING, 9"
- COMB CURB AND GUTTER REMOVAL (SPECIAL)*
- STORM SEWER REMOVAL

R - REMOVE STRUCTURE
 ABN - ABANDON SEWER
 M.E. - MATCH TO EXISTING ELEVATION

NOTE:
 1. EXCAVATION FOR PR SUB-BASE GRAN MATL TY B 4" UNDER THE PR CURB WILL BE INCLUDED IN THE COST OF CC&G REM (SPL) IN AREAS WITHOUT CROSS SECTIONS AND AS EARTH EXCAVATION IN AREAS WITH CROSS SECTIONS.

IMPROVEMENT LEGEND

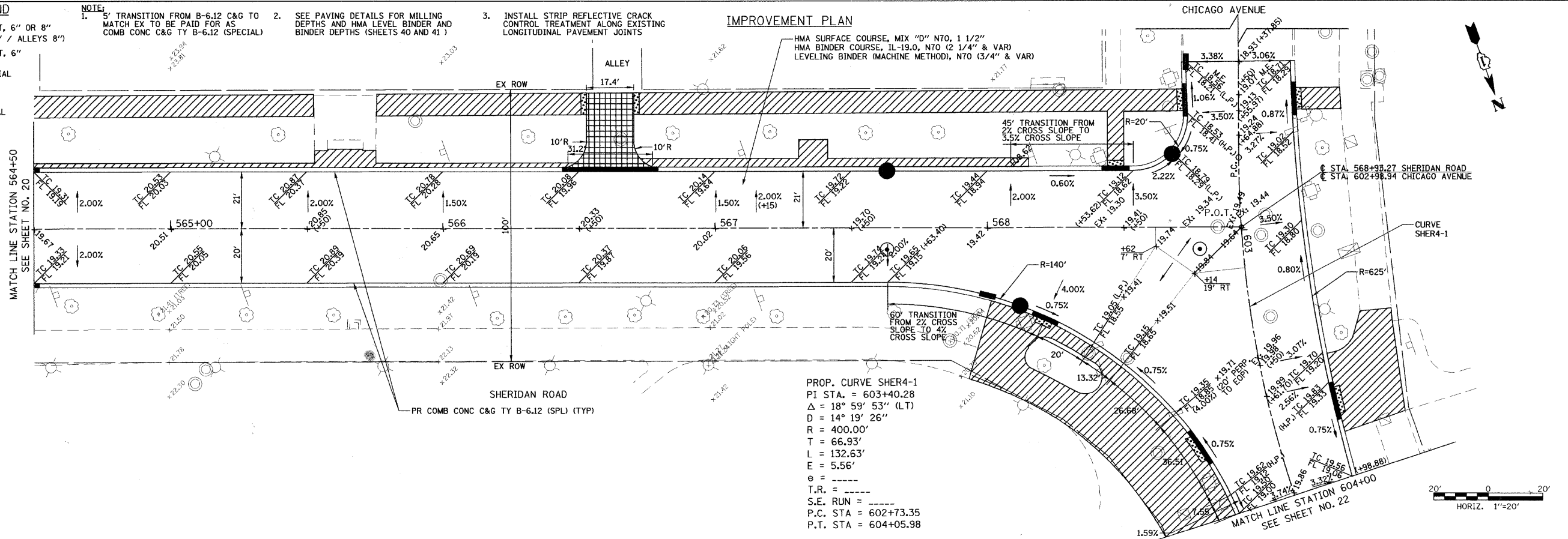
- PCC DRIVEWAY PAVEMENT, 6" OR 8" (RESIDENTIAL APRONS 6" / ALLEYS 8")
- HMA DRIVEWAY PAVEMENT, 6"
- PCC SIDEWALK 5", SPECIAL
- REMOVE AND RELAY BRICK SIDEWALK
- BRICK DRIVEWAY REMOVAL AND REPLACEMENT
- DETECTABLE WARNINGS
- DEPRESSED COMB. CONCRETE CURB AND GUTTER

NOTE:
 1. 5' TRANSITION FROM B-6.12 C&G TO MATCH EX TO BE PAID FOR AS COMB CONC C&G TY B-6.12 (SPECIAL)

2. SEE PAVING DETAILS FOR MILLING DEPTHS AND HMA LEVEL BINDER AND BINDER DEPTHS (SHEETS 40 AND 41)

3. INSTALL STRIP REFLECTIVE CRACK CONTROL TREATMENT ALONG EXISTING LONGITUDINAL PAVEMENT JOINTS

IMPROVEMENT PLAN



PROP. CURVE SHER4-1
 P.I. STA. = 603+40.28
 $\Delta = 18^\circ 59' 53''$ (LT)
 D = 14' 19' 26"
 R = 400.00'
 T = 66.93'
 L = 132.63'
 E = 5.56'
 $e =$ -----
 T.R. = -----
 S.E. RUN = -----
 P.C. STA = 602+73.35
 P.T. STA = 604+05.98

TranSystems
 1051 PERIMETER DRIVE, SUITE 1025
 SCHUMBERG, IL 60173

FILE NAME =	USER NAME = #USER#	DESIGNED - CEC	REVISED -
#FILE#		DRAWN - NFT	REVISED -
PLOT SCALE = #SCALE#		CHECKED - DWB	REVISED -
PLOT DATE = #DATE#		DATE - 04/09/2010	REVISED -

STATE OF ILLINOIS
DEPARTMENT OF TRANSPORTATION

SHERIDAN ROAD / FOREST AVENUE
REMOVAL AND IMPROVEMENT PLAN

SCALE: SHEET NO. 9 OF 10 SHEETS STA. TO STA.

F.A.U. RTE.	SECTION	COUNTY	TOTAL SHEETS	SHEET NO.
2865	08-00250-02-PV	COOK	79	21
CONTRACT NO. 63417				
FED. ROAD DIST. NO. ILLINOIS FED. AID PROJECT				