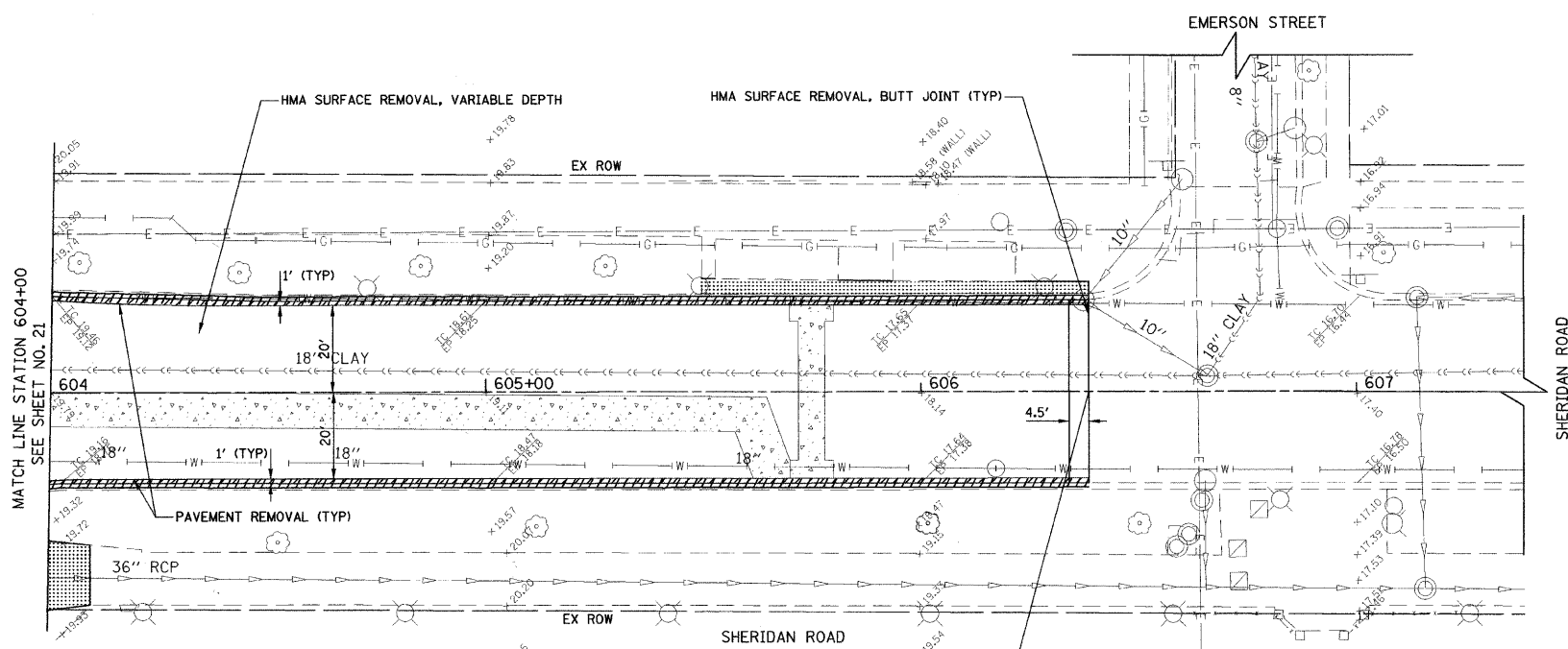


REMOVAL PLAN

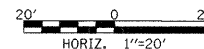


REMOVAL LEGEND

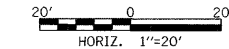
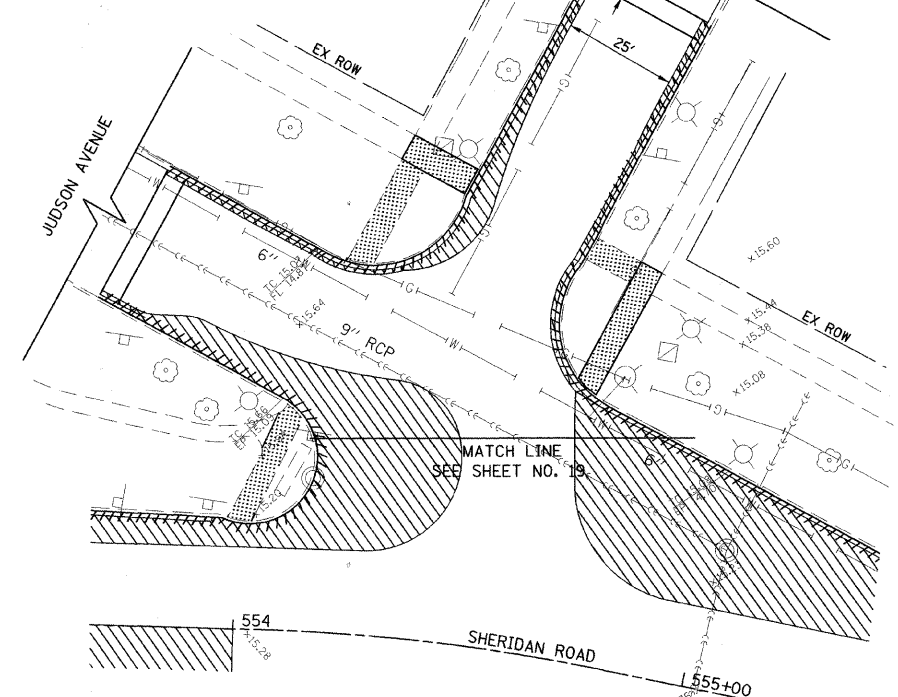
- PAVEMENT REMOVAL
- SIDEWALK REMOVAL
- DRIVEWAY PAVEMENT REMOVAL
- CLASS D PATCHING, 9"
- COMB CURB AND GUTTER REMOVAL (SPECIAL)
- STORM SEWER REMOVAL

- R - REMOVE STRUCTURE
 - ABN - ABANDON SEWER
 - M.E. - MATCH TO EXISTING ELEVATION
- NOTE:
 1. EXCAVATION FOR PR SUB-BASE GRAN MATL TY B 4" UNDER THE PR CURB WILL BE INCLUDED IN THE COST OF CC&G REM (SPL) IN AREAS WITHOUT CROSS SECTIONS AND AS EARTH EXCAVATION IN AREAS WITH CROSS SECTIONS.

IMPROVEMENT ENDS
STA. 606+38.44



HMA SURFACE REMOVAL, BUTT JOINT (TYP)

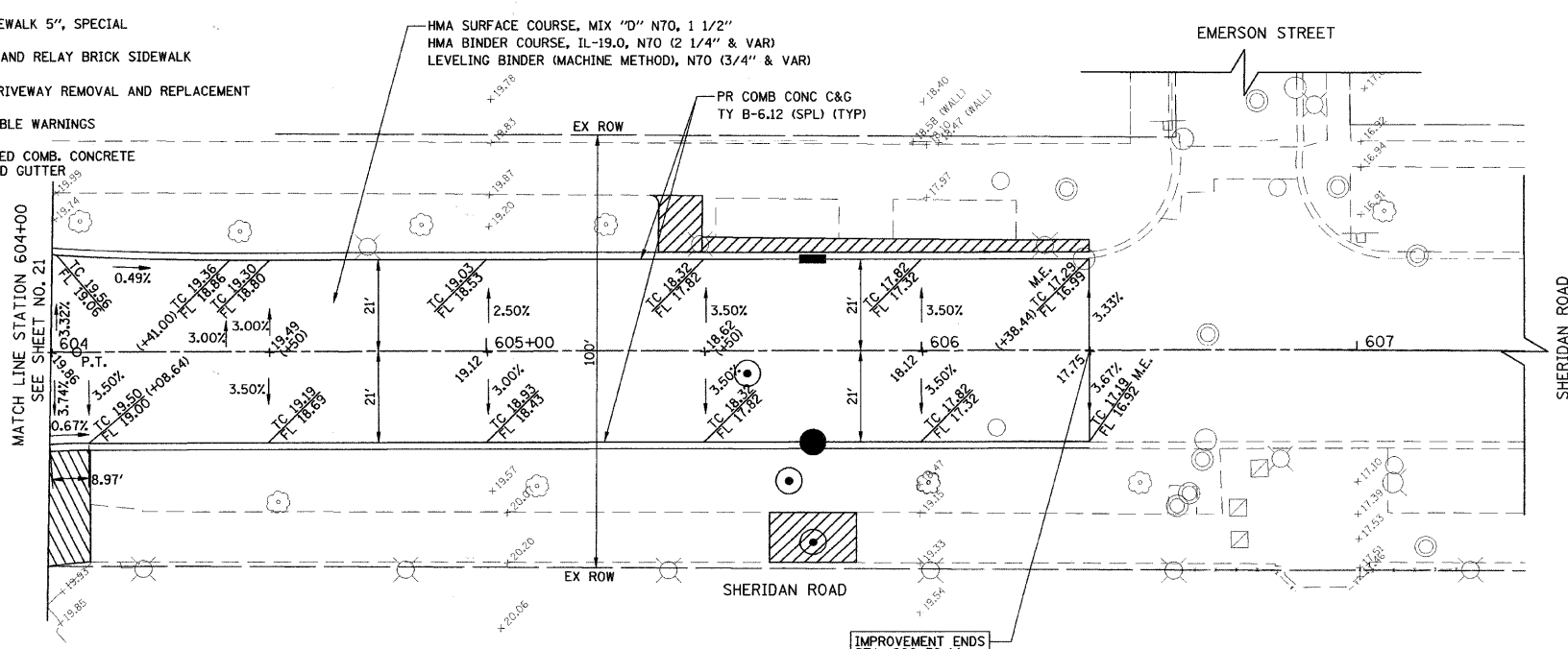


IMPROVEMENT LEGEND

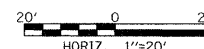
- PCC DRIVEWAY PAVEMENT, 6" OR 8" (RESIDENTIAL APRONS 6" / ALLEYS 8")
- HMA DRIVEWAY PAVEMENT, 6"
- PCC SIDEWALK 5", SPECIAL
- REMOVE AND RELAY BRICK SIDEWALK
- BRICK DRIVEWAY REMOVAL AND REPLACEMENT
- DETECTABLE WARNINGS
- DEPRESSED COMB. CONCRETE CURB AND GUTTER

- NOTE:
 1. 5' TRANSITION FROM B-6.12 C&G TO MATCH EX TO BE PAID FOR AS COMB CONC C&G TY B-6.12 (SPECIAL)
2. SEE PAVING DETAILS FOR MILLING DEPTHS AND HMA LEVEL BINDER AND BINDER DEPTHS (SHEETS 40 AND 41)
3. INSTALL STRIP REFLECTIVE CRACK CONTROL TREATMENT ALONG EXISTING LONGITUDINAL PAVEMENT JOINTS

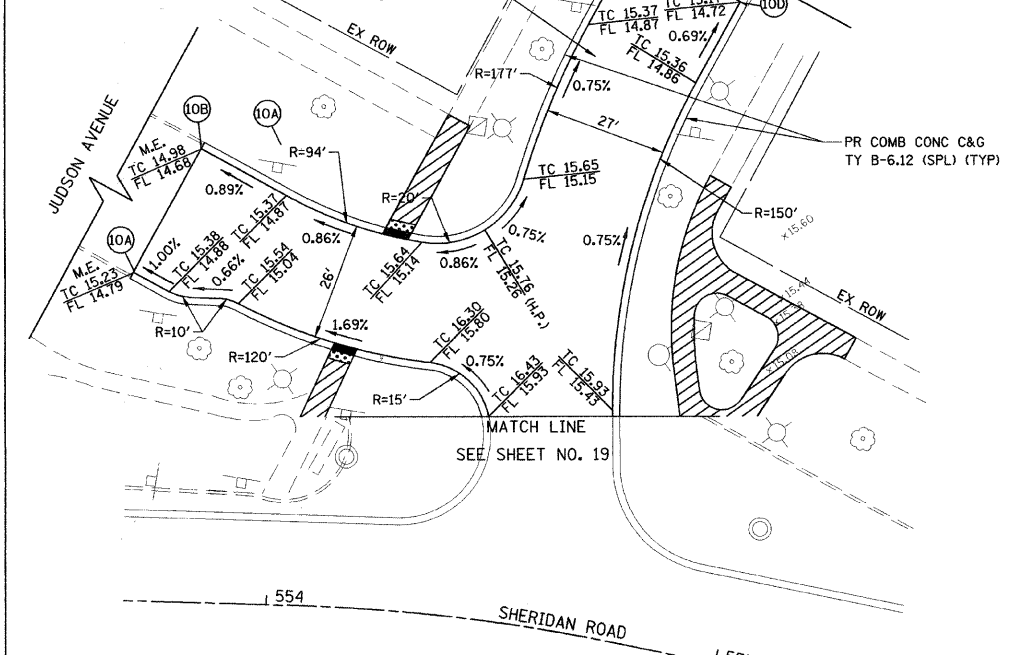
IMPROVEMENT PLAN



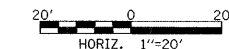
IMPROVEMENT ENDS
STA. 606+38.44



HMA SURFACE COURSE, MIX "D" N70, 1 1/2"
 HMA BINDER COURSE, IL-19.0, N70 (2 1/4" & VAR)
 LEVELING BINDER (MACHINE METHOD), N70 (3/4" & VAR)



POINT	STATION	OFFSET
10A	553+68.57	73.28' LT
10B	553+82.53	100.66' LT
10C	554+58.33	153.22' LT
10D	554+77.81	144.33' LT



FILE NAME =	USER NAME = #USER#	DESIGNED - CEC	REVISED -
#FILE#		DRAWN - NFT	REVISED -
	PLOT SCALE = #SCALE#	CHECKED - DWB	REVISED -
	PLOT DATE = #DATE#	DATE - 04/09/2010	REVISED -

F.A.U. RTE.	SECTION	COUNTY	TOTAL SHEETS	SHEET NO.
2865	08-00250-02-PV	COOK	79	22
CONTRACT NO. 63417				
FED. ROAD DIST. NO. ILLINOIS FED. AID PROJECT				