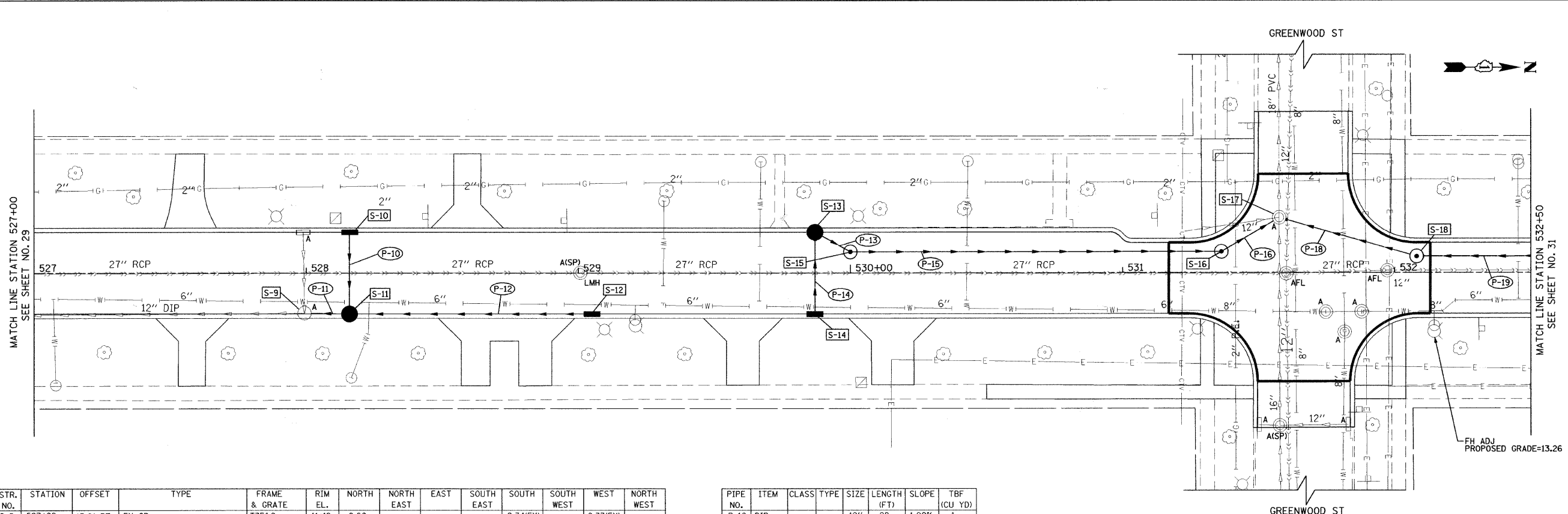


PLAN	SURVEYED	DATE
NOTE BOOK NO.	PLOTTED	BY
NO.	CHECKED	
	BY	
	DATE	

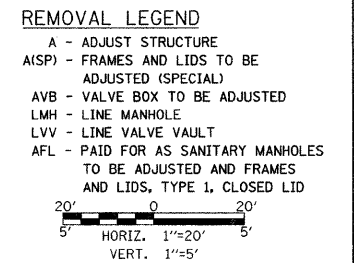
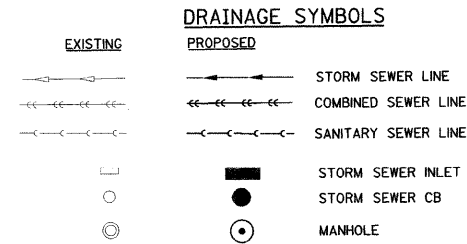
PROFILE	SURVEYED	DATE
NOTE BOOK NO.	PLOTTED	BY
NO.	CHECKED	
	BY	
	DATE	



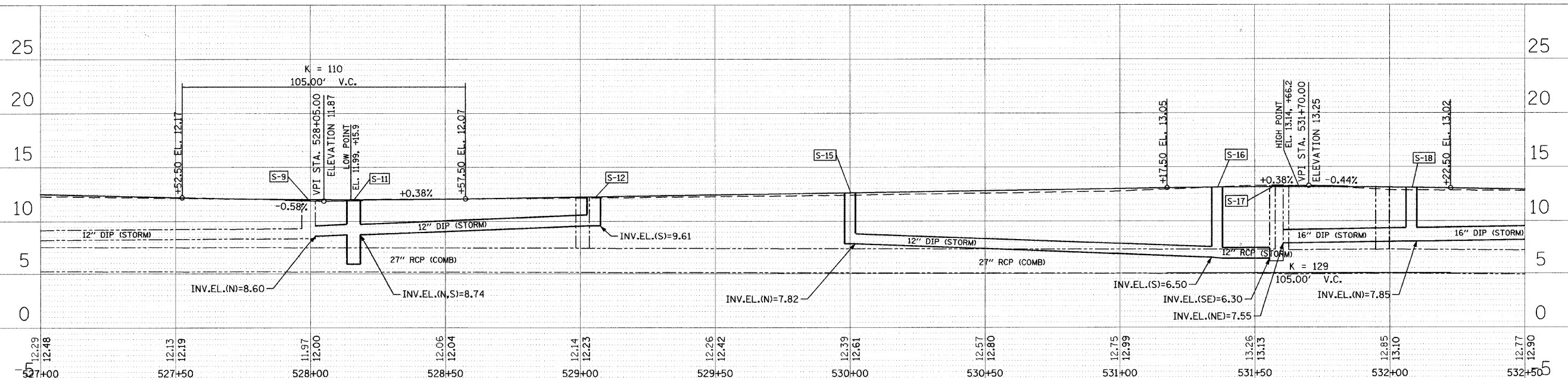
STR. NO.	STATION	OFFSET	TYPE	FRAME & GRATE	RIM EL.	NORTH	NORTH EAST	EAST	SOUTH EAST	SOUTH WEST	WEST	NORTH WEST
S-9	527+99	15.0' RT	EX CB	T3F&G	11.48	8.60					8.34(EX)	8.33(EX)
S-10	528+16	15.0' LT	PR INL TY A	T3F&G	11.47			9.22				
S-11	528+16	15.0' RT	PR CB TY A *	T3F&G	11.47	8.74				8.74		8.94
S-12	529+05	15.0' RT	PR INL TY A	T3F&G	11.86					9.61		
S-13	529+87	15.0' LT	PR CB TY A *	T3F&G	11.98		9.02	9.12				
S-14	529+87	15.0' RT	PR INL TY A	T3F&G	12.14						9.39	
S-15	530+00	7.7' LT	PR MH TY A - 4' DIA	TIF&G CL	12.26	7.82					8.91	
S-16	531+36	7.7' LT	PR MH TY A - 4' DIA	TIF&G CL	12.84				6.50			6.40
S-17	531+58	20.2' LT	EX MH	TIF&G CL	12.85	PLUG	7.55	7.63(EX)	6.30	PLUG		6.13(EX)
S-18	532+08	6.00' LT	PR MH TY A - 4' DIA	TIF&G CL	12.85	7.85					7.75	

PIPE NO.	ITEM	CLASS	TYPE	SIZE	LENGTH (FT)	SLOPE	TBF (CU YD)
P-10	DIP	-	-	12"	28	1.00%	1
P-11	DIP	-	-	12"	14	1.00%	2
P-12	DIP	-	-	12"	87	1.00%	4
P-15	DIP	-	-	12"	132.3	1.00%	73
P-13	DIP	-	-	12"	10.9	1.00%	3
P-14	DIP	-	-	12"	27	1.00%	4
P-16	SS RG	A	2	12"	20.1	0.50%	15
P-18	DIP	-	-	16"	50	0.40%	26
P-19	DIP	-	-	16"	120	0.40%	48

SS RG - STORM SEWER RUBBER GASKET  
DIP - DUCTILE IRON PIPE CLASS 50



ALL T3F&G SHALL BE EAST JORDAN TYPE 7045 MI SINUSOIDAL GRATES OR APPROVED EQUIVALENT  
\* INDICATES THAT STRUCTURE MUST INCLUDE A HALF-TRAP CONNECTION FROM LATERAL TO MAINLINE (SEE SEWER DETAILS)



TranSystems  
1051 PERIMETER DRIVE, SUITE 1025  
SCHAUMBURG, IL 60173

FILE NAME	USER NAME = USER#	DESIGNED - CMU	REVISED -	STATE OF ILLINOIS DEPARTMENT OF TRANSPORTATION	SHERIDAN ROAD / FOREST AVENUE DRAINAGE AND UTILITIES PLAN	F.A.U. RTE.	SECTION	COUNTY	TOTAL SHEETS	SHEET NO.	
#FILE#	PLOT SCALE = #SCALE#	DRAWN - CMU	REVISED -			2865	08-00250-02-PV	COOK	79	30	
	PLOT DATE = #DATE#	CHECKED - DWB	REVISED -			CONTRACT NO. 63417					
		DATE - 04/09/2010	REVISED -			FED. ROAD DIST. NO. ILLINOIS FED. AID PROJECT					