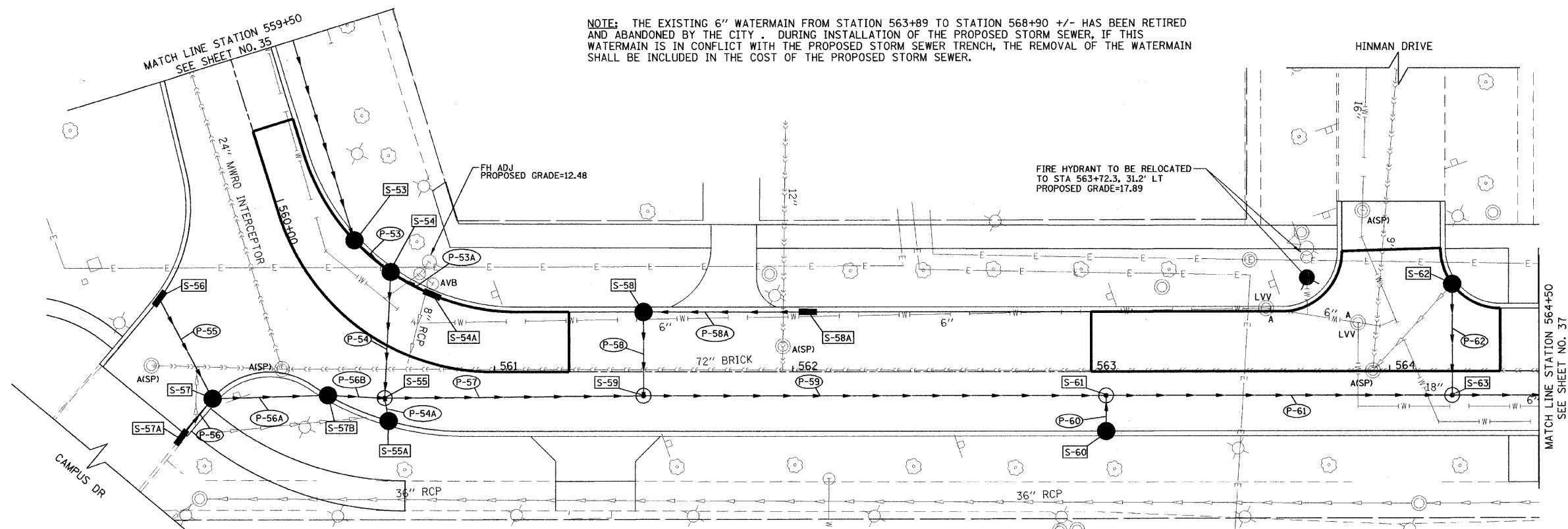


PLAN	SURVEYED	DATE
	PLOTTED	
	CHECKED	
	RT. OF WAY CHECKED	
	NO. _____	
	FILE NAME	

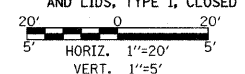
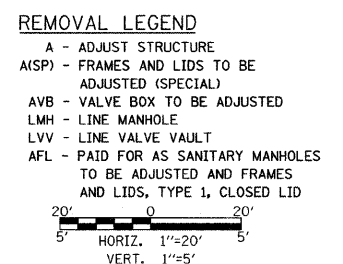
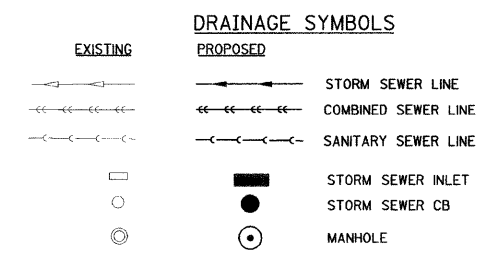
PROFILE	SURVEYED	DATE
	PLOTTED	
	CHECKED	
	BLM. NOTED	
	STRUCTURE NOTATION CHG.	
	NO. _____	



NOTE: THE EXISTING 6" WATERMAIN FROM STATION 563+89 TO STATION 568+90 +/- HAS BEEN RETIRED AND ABANDONED BY THE CITY. DURING INSTALLATION OF THE PROPOSED STORM SEWER, IF THIS WATERMAIN IS IN CONFLICT WITH THE PROPOSED STORM SEWER TRENCH, THE REMOVAL OF THE WATERMAIN SHALL BE INCLUDED IN THE COST OF THE PROPOSED STORM SEWER.

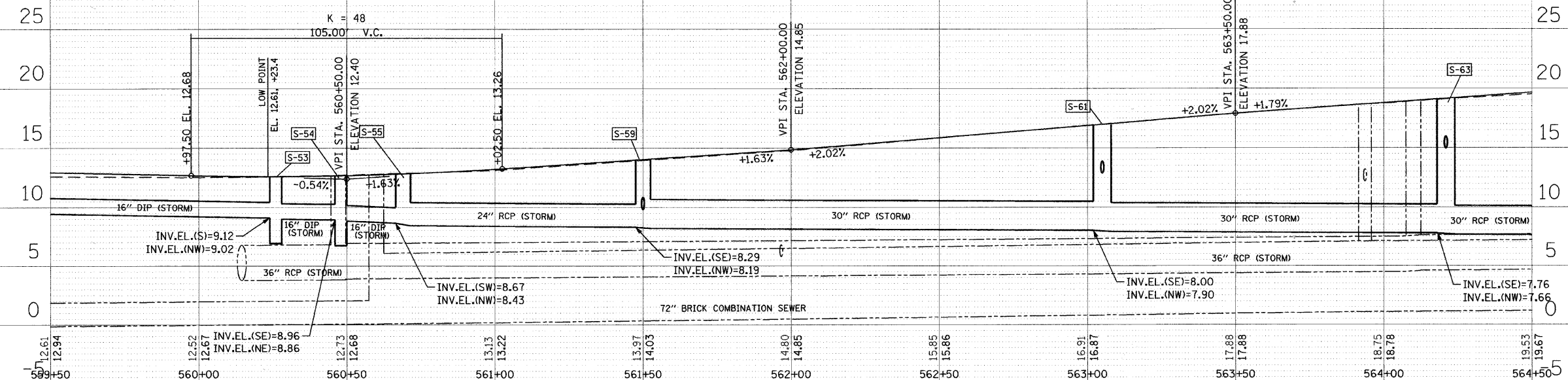
STR. NO.	STATION	OFFSET	TYPE	FRAME & GRATE	RIM EL.	NORTH	NORTH EAST	EAST	SOUTH EAST	SOUTH	SOUTH WEST	WEST	NORTH WEST
S-53	560+26	19.1' LT	PR CB TY A *	T3F&G	12.05								9.02
S-54	560+48	21.1' LT	PR CB TY A *	T3F&G	12.04		8.86		8.96	9.12			9.12
S-54A	560+70	21.7' LT	PR INL TY A	T3F&G	12.35				9.25				
S-55	560+69	16.2' RT	PR MH TY A - 5' DIA	TIF&G CL	12.34	9.14			8.53		8.67		8.43
S-55A	560+72	22.9' RT	PR CB TY A *	T3F&G	12.17					9.17			
S-56	560+13	47.5' RT	PR INL TY A	T3F&G	11.41	9.10							
S-57	560+36	50.9' RT	PR CB TY A	T3F&G	11.25		8.75			8.75			8.75
S-57A	560+38	67.5' RT	PR INL TY A	T3F&G	10.81						8.81		
S-57B	560+55	24.5' RT	PR CB TY A *	T3F&G	11.98			8.60					8.60
S-58	561+50	20.0' LT	PR CB TY A *	T3F&G	13.63		10.13						10.53
S-58A	562+05	20.0' LT	PR INL TY A	T3F&G	14.55			11.05					
S-59	561+50	8.0' RT	PR MH TY A - 5' DIA	TIF&G CL	13.79			8.29		9.90			8.19
S-60	563+05	20.0' RT	PR CB TY A *	T3F&G	16.40					12.90			
S-61	563+05	8.0' RT	PR MH TY A - 6' DIA	TIF&G CL	16.74		12.83		8.00				7.90
S-62	564+21	29.1' LT	PR CB TY A *	T3F&G	18.79		15.29						
S-63	564+21	8.0' RT	PR MH TY A - 6' DIA	TIF&G CL	18.99			7.76		14.97			7.66

PIPE NO.	ITEM	CLASS	TYPE	SIZE	LENGTH (FT)	SLOPE	TBF (CU YD)
P-53	DIP	-	-	16"	12.6	0.50%	2
P-53A	DIP	-	-	12"	12.7	1.00%	3
P-54	DIP	-	-	16"	37.6	0.50%	8
P-54A	DIP	-	-	12"	3.3	1.00%	1
P-55	DIP	-	-	12"	34.7	1.00%	2
P-56	DIP	-	-	12"	13.8	0.44%	1
P-56A	DIP	-	-	12"	34.7	0.44%	10
P-56B	DIP	-	-	16"	14.5	0.44%	4
P-57	SS RG	A	1	24"	81.8	0.17%	33
P-58	DIP	-	-	12"	23.5	1.00%	7
P-58A	DIP	-	-	12"	52	1.00%	11
P-59	SS RG	A	2	30"	149.5	0.13%	134
P-60	DIP	-	-	12"	7	1.00%	2
P-61	SS RG	A	2	30"	109.9	0.13%	170
P-62	DIP	-	-	12"	32.1	1.00%	10



ALL T3F&G SHALL BE EAST JORDAN TYPE T045 MI SINUSOIDAL GRATES OR APPROVED EQUIVALENT
 * INDICATES THAT STRUCTURE MUST INCLUDE A HALF-TRAP CONNECTION FROM LATERAL TO MAINLINE (SEE SEWER DETAILS)

SS RG - STORM SEWER RUBBER GASKET
 DIP - DUCTILE IRON PIPE CLASS 50



FILE NAME =	USER NAME = #USER#	DESIGNED - CMU	REVISED -	STATE OF ILLINOIS DEPARTMENT OF TRANSPORTATION	SHERIDAN ROAD / FOREST AVENUE DRAINAGE AND UTILITIES PLAN	F.A.U. RTE. 2865	SECTION 08-00250-02-PV	COUNTY COOK	TOTAL SHEETS 79	SHEET NO. 36	
#FILE#	PLLOT SCALE = #SCALE#	DRAWN - CMU	REVISED -			SCALE:	SHEET NO. 8 OF 10 SHEETS	STA. TO STA.	FED. ROAD DIST. NO.	ILLINOIS FED. AID PROJECT	CONTRACT NO. 63417
	PLLOT DATE = #DATE#	CHECKED - DWB	REVISED -								
		DATE - 04/09/2010	REVISED -								