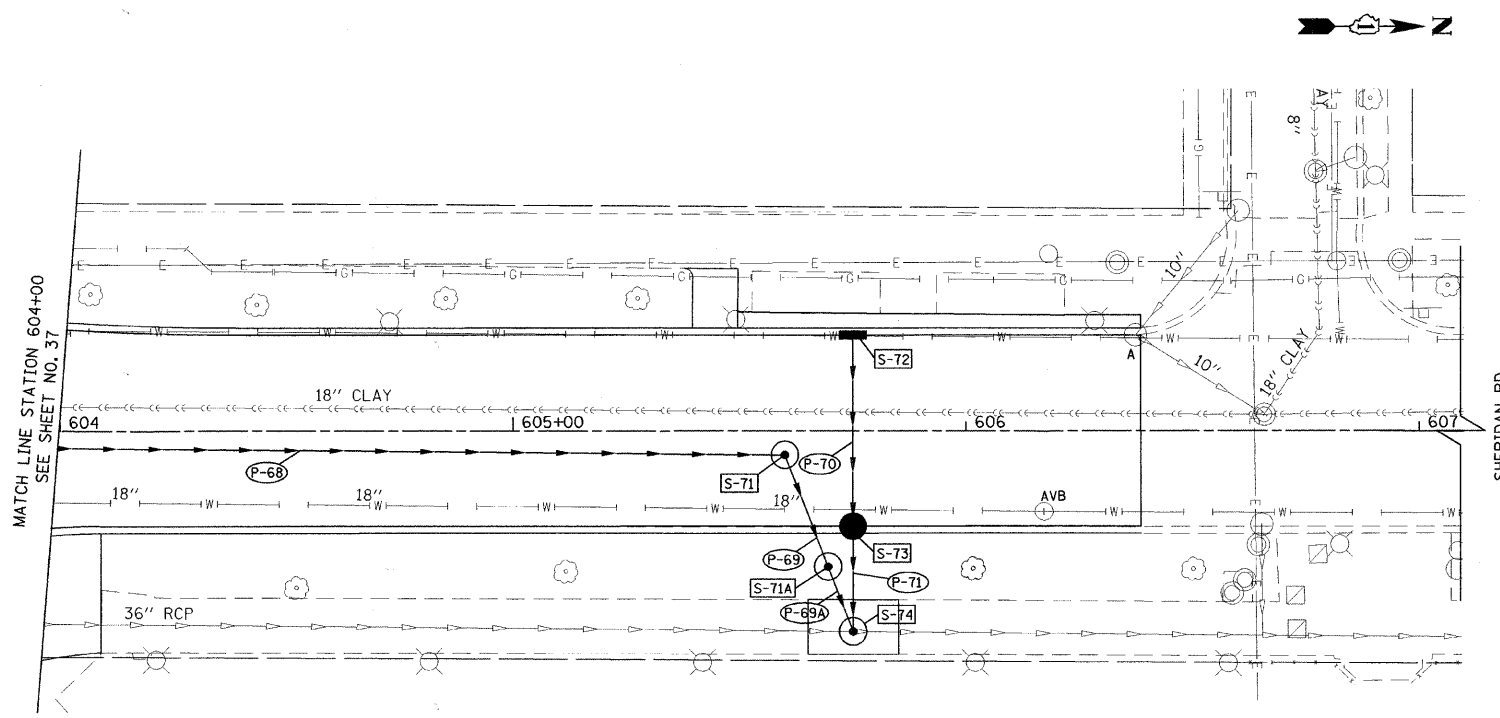


| | | |
|-----------|----------|------|
| PLAN | SURVEYED | DATE |
| NOTE BOOK | PLOTTED | BY |
| NO. | CHECKED | DATE |
| | BY | |
| | DATE | |
| | NO. | |
| | DATE | |

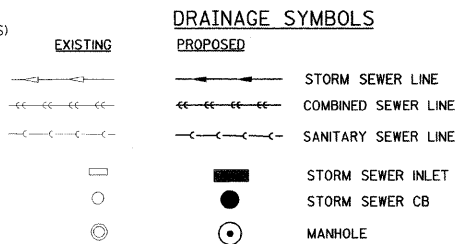


| STR. NO. | STATION | OFFSET | TYPE | FRAME & GRATE | RIM EL. | NORTH | NORTH EAST | EAST | SOUTH EAST | SOUTH | SOUTH WEST | WEST | NORTH WEST |
|----------|---------|----------|----------------------------|---------------|---------|----------|------------|-------|------------|----------|------------|-------|------------|
| S-71 | 605+60 | 5.2' RT | PR MH TY A - 6' DIA | TIF&G CL | 18.34 | | 6.45 | | | 6.55 | | | |
| S-71A | 605+69 | 29.9' RT | PR MH TY A - 7' DIA (W/CV) | TIF&G CL | 18.77 | | 6.43 | | | | 6.43 | | |
| S-72 | 605+75 | 21.0' LT | PR INL TY A | T3F&G | 17.63 | | | 14.13 | | | | | |
| S-73 | 605+75 | 21.0' RT | PR CB TY A * | T3F&G | 17.63 | | | 13.64 | | | | 13.74 | |
| S-74 | 605+75 | 44.2' RT | PR MH TY A - 7' DIA | TIF&G CL | 19.48 | 5.98(EX) | | | | 5.98(EX) | 6.41 | | 13.46 |

ALL T3F&G SHALL BE EAST JORDAN TYPE 7045 MI SINUSOIDAL GRATES OR APPROVED EQUIVALENT
 * INDICATES THAT STRUCTURE MUST INCLUDE A HALF-TRAP CONNECTION FROM LATERAL TO MAINLINE (SEE SEWER DETAILS)
 (W/CV) INDICATES THAT A CHECK VALVE SHALL BE INSTALLED IN THIS STRUCTURE (SEE SEWER DETAILS)

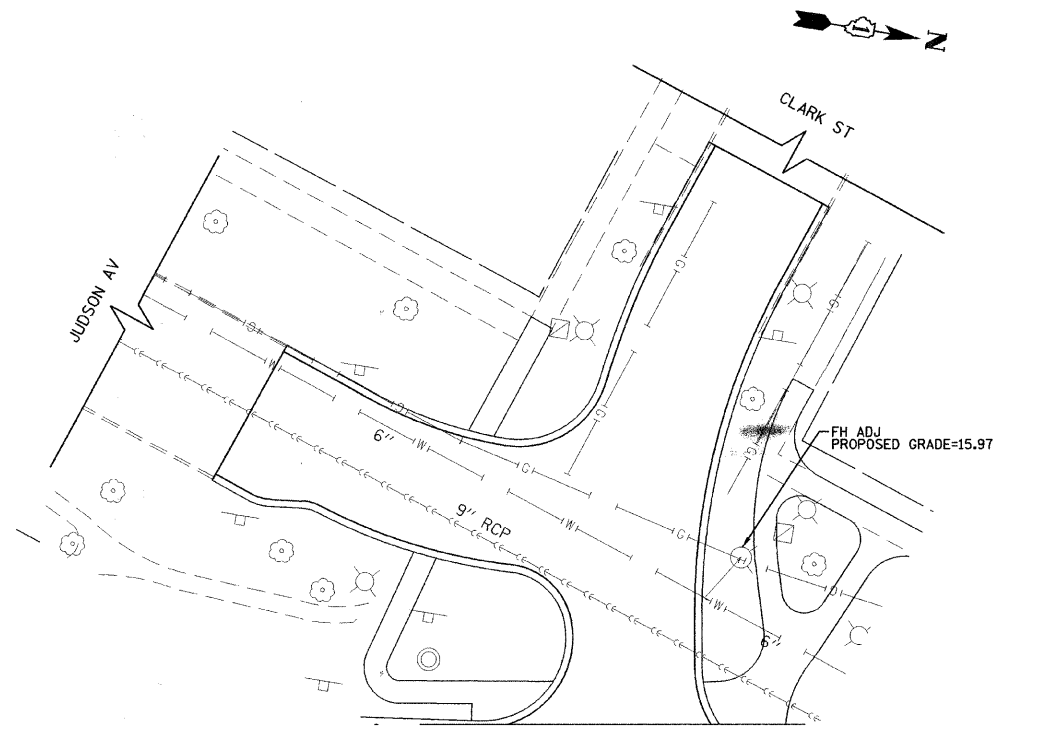
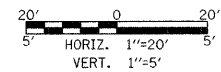
| PIPE NO. | ITEM | CLASS | TYPE | SIZE | LENGTH (FT) | SLOPE | TBF (CU YD) |
|----------|-------|-------|------|------|-------------|-------|-------------|
| P-68 | SS RG | A | 2 | 30" | 251.3 | 0.13% | 518 |
| P-69 | SS RG | A | 2 | 30" | 20 | 0.13% | 44 |
| P-69A | SS RG | A | 2 | 30" | 8.3 | 0.13% | 20 |
| P-70 | DIP | - | - | 12" | 39 | 1.00% | 11 |
| P-71 | DIP | - | - | 12" | 18.2 | 1.00% | 12 |

SS RG - STORM SEWER RUBBER GASKET
 DIP - DUCTILE IRON PIPE CLASS 50



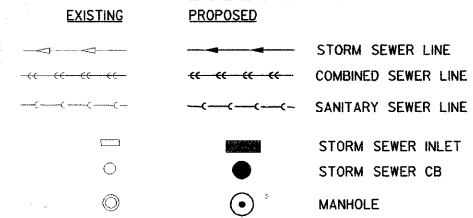
REMOVAL LEGEND

- A - ADJUST STRUCTURE
- A(SP) - FRAMES AND LIDS TO BE ADJUSTED (SPECIAL)
- AVB - VALVE BOX TO BE ADJUSTED
- LMH - LINE MANHOLE
- LVV - LINE VALVE VAULT
- AFL - PAID FOR AS SANITARY MANHOLES TO BE ADJUSTED AND FRAMES AND LIDS, TYPE 1, CLOSED LID



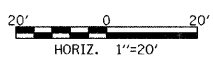
MATCH LINE SEE SHEET NO. 35

DRAINAGE SYMBOLS

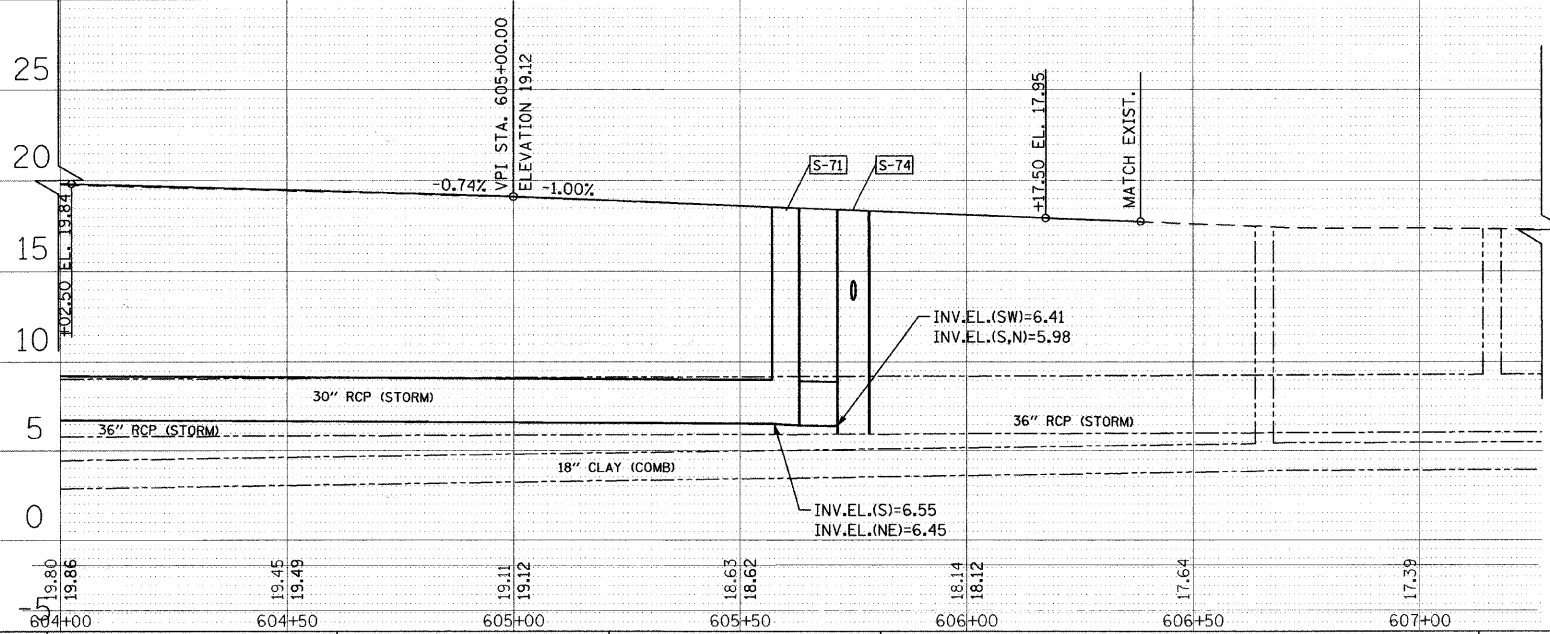


REMOVAL LEGEND

- A - ADJUST STRUCTURE
- A(SP) - FRAMES AND LIDS TO BE ADJUSTED (SPECIAL)
- AVB - VALVE BOX TO BE ADJUSTED
- LMH - LINE MANHOLE
- LVV - LINE VALVE VAULT
- AFL - PAID FOR AS SANITARY MANHOLES TO BE ADJUSTED AND FRAMES AND LIDS, TYPE 1, CLOSED LID



| | | |
|-----------|----------|------|
| PROFILE | SURVEYED | DATE |
| NOTE BOOK | PLOTTED | BY |
| NO. | CHECKED | DATE |
| | BY | |
| | DATE | |
| | NO. | |
| | DATE | |



TranSystems
 1051 PERIMETER DRIVE, SUITE 1025
 SCHAUMBURG, IL 60173

| | | | | | | | | | | | |
|----------------------|--------------------|-------------------|-----------|---|--|---|----------------|---|--------------|-----------|--|
| FILE NAME = | USER NAME = #USER# | DESIGNED - CMU | REVISED - | STATE OF ILLINOIS DEPARTMENT OF TRANSPORTATION | SHERIDAN ROAD / FOREST AVENUE DRAINAGE AND UTILITIES PLAN | F.A.U. RTE. | SECTION | COUNTY | TOTAL SHEETS | SHEET NO. | |
| | | DRAWN - CMU | REVISED - | | | 2865 | 08-00250-02-PV | COOK | 79 | 38 | |
| PLOT SCALE = #SCALE# | | CHECKED - DWB | REVISED - | | | CONTRACT NO. 63417 | | | | | |
| PLOT DATE = #DATE# | | DATE - 04/09/2010 | REVISED - | | | SCALE: SHEET NO. 10 OF 10 SHEETS STA. TO STA. | | FED. ROAD DIST. NO. ILLINOIS FED. AID PROJECT | | | |