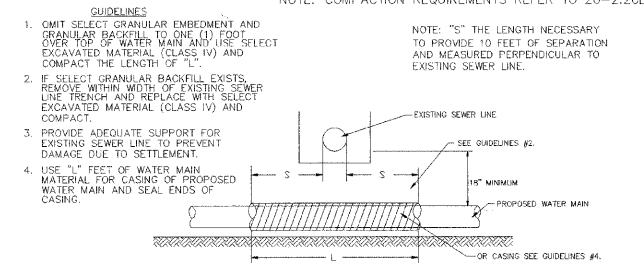
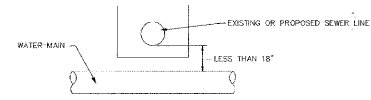


PROPOSED WATER MAIN BELOW EXISTING SEWER LINE WITH 18" MINIMUM VERTICAL SEPARATION.

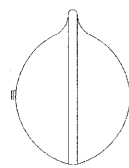
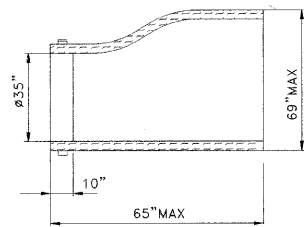


PLACEMENT OF WATER MAIN BELOW EXISTING OR PROPOSED SEWER LINE WITH LESS THAN 18" MINIMUM VERTICAL SEPARATION. NOT ALLOWED*



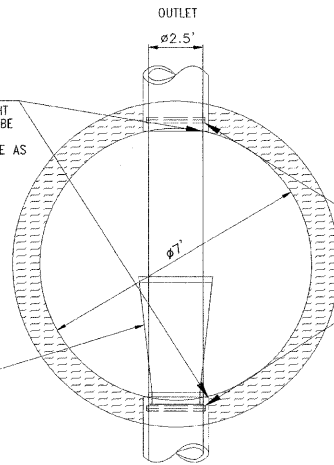
MUST MAINTAIN 18" VERTICAL SEPARATION

WATER AND SEWER SEPARATION REQUIREMENTS



NOTE: RESILIENT WATERTIGHT CONNECTION SHALL BE PROVIDED BETWEEN STRUCTURE AND PIPE AS PER ASTM C-923

INSTALL TIDEFLEX-SERIES TF-1 BACKFLOW PREVENTOR

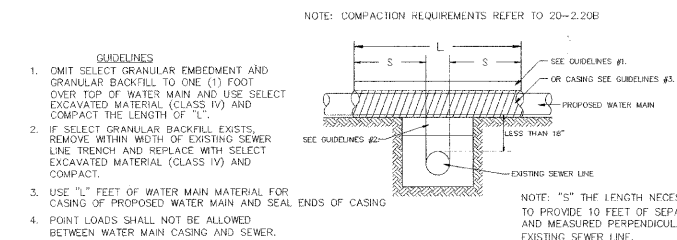


ASTM-923 RESILIENT FLEXIBLE CONNECTOR BETWEEN CONCRETE MANHOLE AND PIPE

SECTIONAL PLAN ON MH

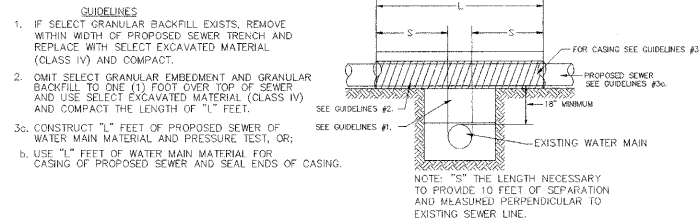
CHECK VALVE NOTE:TIDEFLEX-SERIES TF-1

PROPOSED WATER MAIN ABOVE EXISTING SEWER LINE WITH LESS THAN 18" VERTICAL SEPARATION.



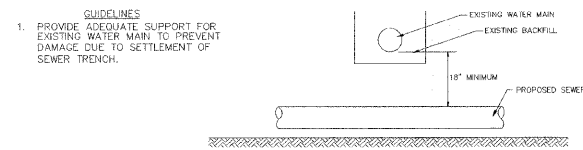
WATER AND SEWER SEPARATION REQUIREMENTS

PROPOSED SEWER LINE WITH 18" MINIMUM VERTICAL SEPARATION ABOVE EXISTING WATER MAIN.

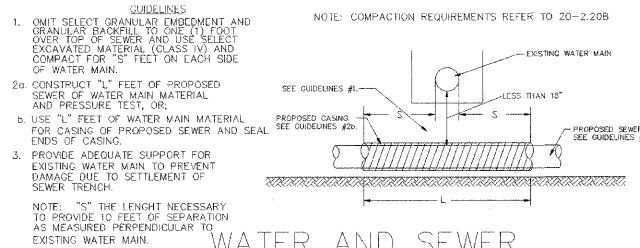


WATER AND SEWER SEPARATION REQUIREMENTS

PROPOSED SEWER LINE BELOW EXISTING WATER MAIN WITH 18" MINIMUM VERTICAL SEPARATION.

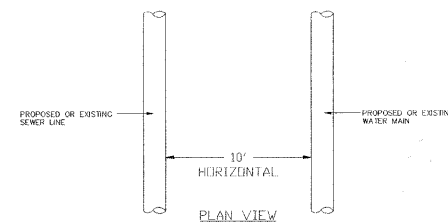


PROPOSED SEWER LINE BELOW EXISTING WATER MAIN WITH LESS THAN 18" VERTICAL SEPARATION.

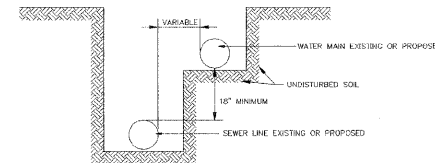


WATER AND SEWER SEPARATION REQUIREMENTS

WHEN PROPOSED SEWER (OR WATER) IS LOCATED 10 FEET OR MORE FROM EXISTING WATER (OR SEWER), NO SPECIAL CONSTRUCTION REQUIRED. SEE SECTION 41-2.01B (1)

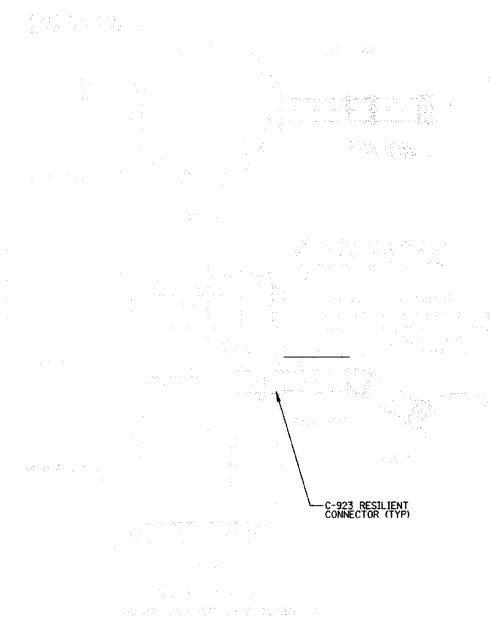


WHEN PROPOSED SEWER (OR WATER) IS LOCATED LESS THAN 10 FEET FROM EXISTING WATER (OR SEWER), DETAILS BELOW SHALL APPLY. SEE SECTION 41-2.01B (2)



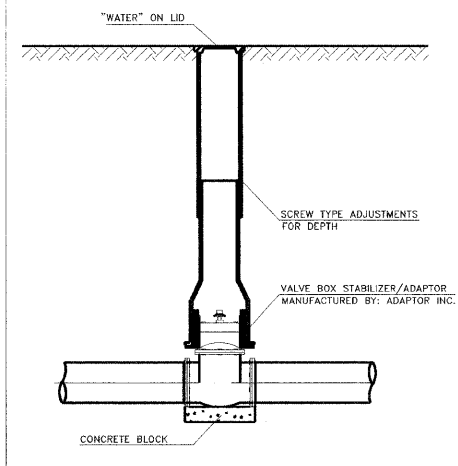
WATER AND SEWER SEPARATION REQUIREMENTS

SEE SPECIAL PROVISIONS FOR CATCH BASIN



WHEN CATCH BASIN IS CONNECTED TO THE EXISTING COMBINED SEWER, THE CONTRACTOR WILL BE REQUIRED TO INSTALL A RESTRICTOR AS SHOWN IN THIS DETAIL. THIS WORK SHALL BE PAID FOR AS "DRAINAGE RESTRICTOR". REFER TO SPECIAL PROVISIONS IN CONTRACT PROPOSAL.

TYPICAL VALVE BOX DETAIL



FILE NAME = #FILE#	USER NAME = #USER#	DESIGNED - CEC	REVISED -	STATE OF ILLINOIS DEPARTMENT OF TRANSPORTATION	SHERIDAN ROAD / FOREST AVENUE CITY OF EVANSTON DETAILS	F.A.U. RTE. 2865	SECTION 08-00250-02-PV	COUNTY COOK	TOTAL SHEETS 79	SHEET NO. 53		
	PLOT SCALE = #SCALE#	DRAWN - NFT	REVISED -			NOT TO SCALE	SHEET NO. 1 OF 2 SHEETS	STA. TO STA.	CONTRACT NO. 63417			
	PLOT DATE = #DATE#	CHECKED - DWB	REVISED -			FED. ROAD DIST. NO. ILLINOIS FED. AID PROJECT						
		DATE - 04/09/2010	REVISED -									