

FOR INDEX OF SHEETS, SEE SHEET NO. 2

FOR INDEX OF HIGHWAY STANDARDS, SEE SHEET NO. 2

STATE OF ILLINOIS DEPARTMENT OF TRANSPORTATION DIVISION OF HIGHWAYS PLANS FOR PROPOSED FEDERAL AID PROJECT

FAU ROUTE 1632 (SAUK TRAIL)
RICHTON ROAD TO RICHTON SQUARE ROAD
STREETSCAPE
PROJECT NO.: TE-00D1 (712)
SECTION NO.: 06-00041-00-LS
VILLAGE OF RICHTON PARK
COOK COUNTY
JOB NO.: C-91-045-07

F.A.U. RTE.	SECTION	COUNTY	TOTAL SHEETS	SHEET NO.
1632	06-00041-00-LS	COOK	11	1
STA.		TO STA.		
FED. ROAD DIST. NO		ILLINOIS	FED AID PROJECT TE-00D1 (712)	

C-91-045-07
CONTRACT 63447

**THIS PROJECT IS
LOCATED WITHIN
THE VILLAGE OF
RICHTON PARK**

**SAUK TRAIL
PROJECT BEGINS
STA 68+00**

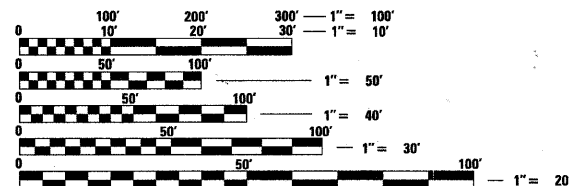
**SAUK TRAIL
PROJECT ENDS
STA 75+89**

DESIGN DESIGNATION:
ARTERIAL

TRAFFIC DATA:
POSTED AND DESIGN SPEED = 35 MPH
2006 ADT = 30,000

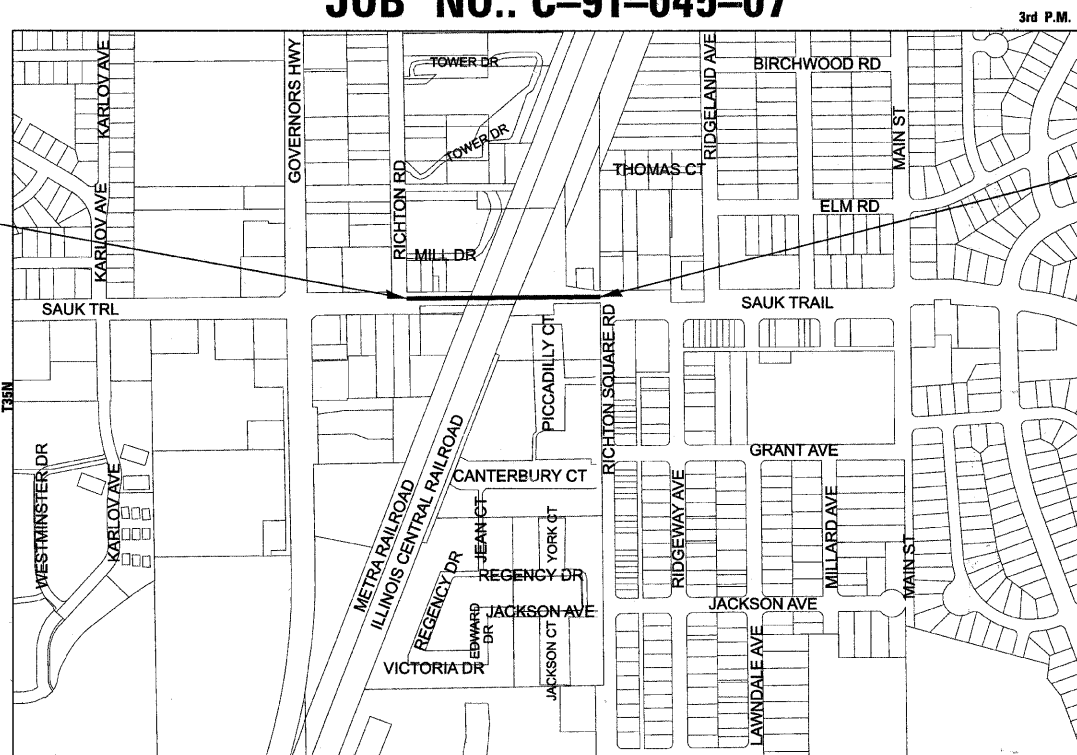


CALL 48 HOURS BEFORE YOU DIG



FULL SIZE PLANS HAVE BEEN PREPARED USING STANDARD ENGINEERING SCALES. REDUCED SIZED PLANS WILL NOT CONFORM TO STANDARD SCALES. IN MAKING MEASUREMENTS ON REDUCED PLANS, THE ABOVE SCALES MAY BE USED.

J.U.L.I.E.
JOINT UTILITY LOCATION INFORMATION FOR EXCAVATION
1-800-892-0123

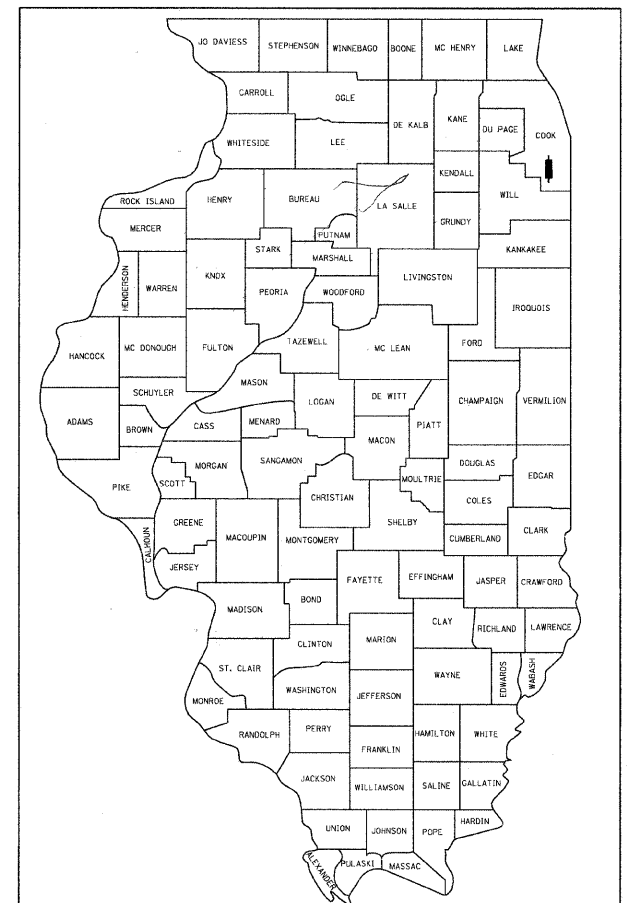


R13E
LOCATION MAP
SCALE: NOT TO SCALE
GROSS LENGTH OF IMPROVEMENT = 789 LF OR 0.149 MILES
NET LENGTH OF IMPROVEMENT = 789 LF OR 0.149 MILES



BAXTER & WOODMAN, INC.
STATE OF ILLINOIS - PROFESSIONAL DESIGN FIRM
LICENSE NO. - 184-001121 - EXPIRES 4/30/2011

Burlington, Wisconsin 262.763.7834 Crystal Lake, Illinois 815.459.1260 DeKalb, Illinois 815.787.3111 Itasca, Illinois 630.773.1870 Mokena, Illinois 708.560.7070 Grayslake, Illinois (Plainfield, Illinois) 847.223.5088 Rockford, Illinois 815.609.7425 Madison, Wisconsin 815.489.1551 608.347.1542
(OFFICE WHICH PREPARED PLANS)



LOCATION OF SECTION INDICATED THUS:

OSKAR A. AGUS, P.E.
62-059408
LICENSED PROFESSIONAL ENGINEER OF ILLINOIS
Oskar A. Agus 1/18/2010
ELECTRICAL ENGINEER
"LICENSE EXPIRES 11-30-2011"

ADAM SEC
081-006666
LICENSED STRUCTURAL ENGINEER OF ILLINOIS
Adam Sec 1/18/2010
STRUCTURAL ENGINEER
"LICENSE EXPIRES 11-30-2010"

THOMAS M. SLATTERY, P.E.
62-050844
LICENSED PROFESSIONAL ENGINEER OF ILLINOIS
Thomas M. Slattery 1/18/2010
PROJECT ENGINEER
"LICENSE EXPIRES 11-30-11"

STATE OF ILLINOIS
DEPARTMENT OF TRANSPORTATION
DIVISION OF HIGHWAYS

APPROVED *January 20, 2010*
[Signature]
VILLAGE OF RICHTON PARK, VILLAGE PRESIDENT

PASSED *JANUARY 29, 2010*
[Signature]
DISTRICT 1 ENGINEER OF LOCAL ROADS & STREETS

RELEASING FOR BID
BASED ON LIMITED REVIEW
FEBRUARY 1, 2010
[Signature]
DEPUTY DIRECTOR OF HIGHWAYS, REGION 1 ENGINEER

**PRINTED BY THE AUTHORITY
OF THE STATE OF ILLINOIS**

Copyright © 2007 by Baxter & Woodman, Inc.
STATE OF ILLINOIS - PROFESSIONAL DESIGN FIRM
LICENSE NO. - 184-001121 - EXPIRES 4/30/2011
FIELD ENGINEER: MELCHOR MANGUERA, P.E. 847 705-4408