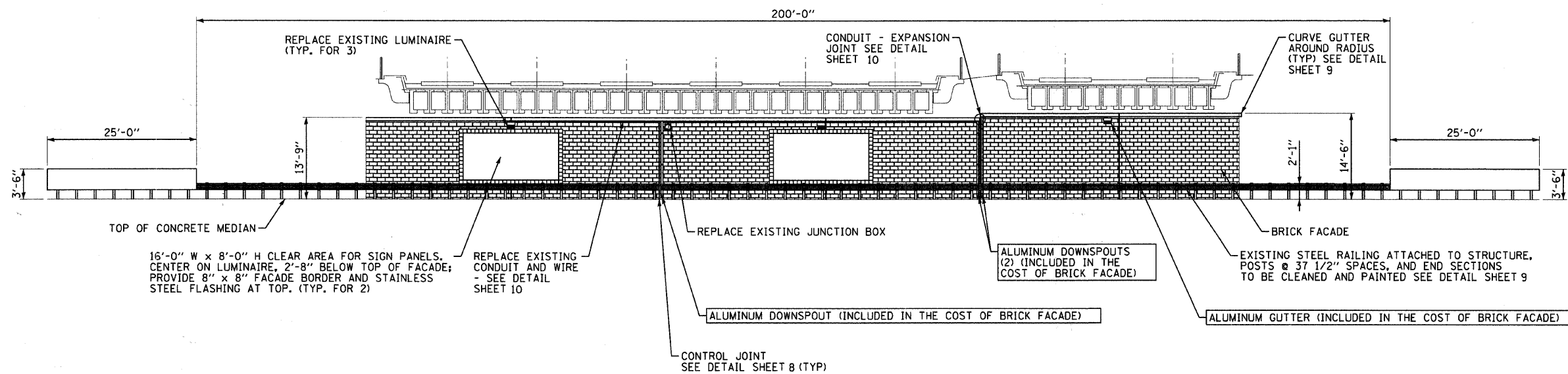


**PIER - LOOKING NORTH**



**PIER - LOOKING SOUTH**

**NOTES**

1. SEE STRUCTURAL GENERAL NOTES SHEET 3
2. INSTALL 3/4" X 8" X 8" BRICK FACADE UNITS IN STACK BOND ON ROUNDED PIER ENDS. PROVIDE A SEALED CONTROL JOINT BETWEEN STACK BOND AND RUNNING BOND FACADE.

COPYRIGHT © 2008 BY BAXTER & WOODMAN, INC.  
 ALL RIGHTS RESERVED.  
 LICENSE NO. 184-00023 - EXPIRES 4/30/2009  
 1/22/2010 9:28:45 AM  
 I:\cnpk\070180\cadd-survey\070180-erie\070180-erie-elevation.sht



DESIGNED - AS	REVISED -
DRAWN - KAR	REVISED -
CHECKED - TMS	REVISED -
DATE - 12-08-08	REVISED -

VILLAGE OF RICHTON PARK, ILLINOIS  
 FAU ROUTE 1632 (SAUK TRAIL)  
 STREETSCAPE

**COMMUTER & MAIN LINE PIER ELEVATIONS**

SCALE: 1" = 10'

STA. TO STA.

F.A.U. RTE.	SECTION	COUNTY	TOTAL SHEETS	SHEET NO.
1632	06-00041-00-LS	COOK	11	6
CONTRACT NO. 63447				
FED. ROAD DIST. NO.		ILLINOIS FED. AID PROJECT		