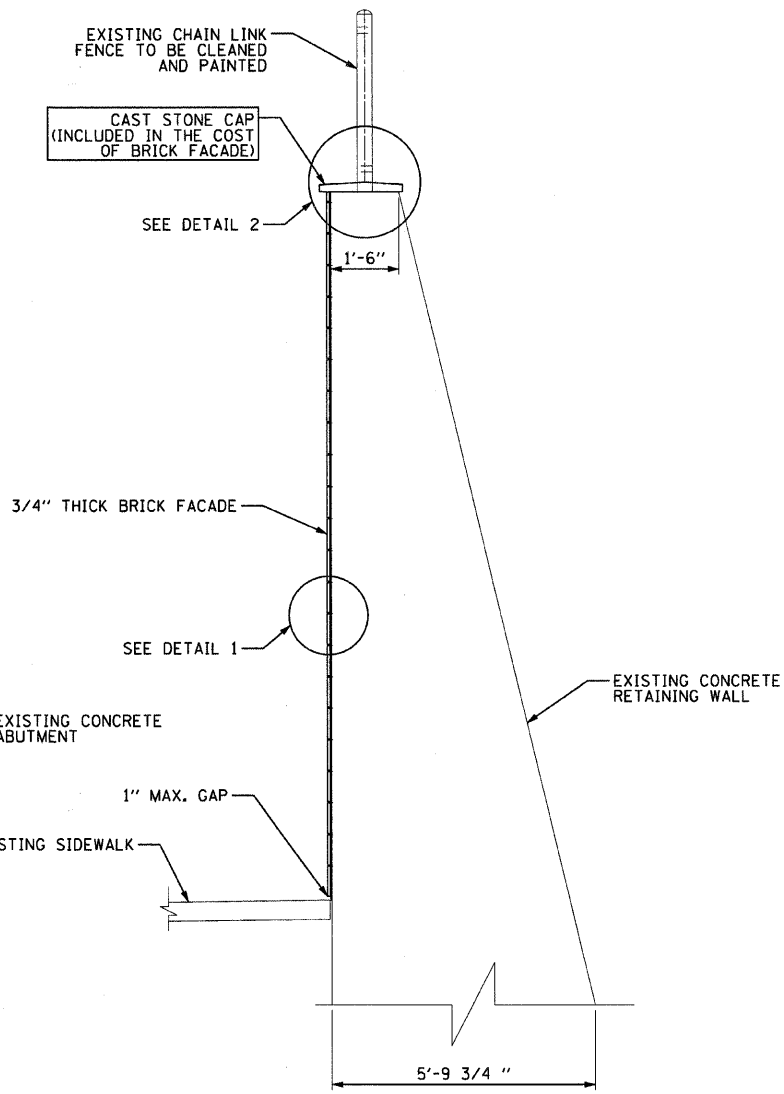
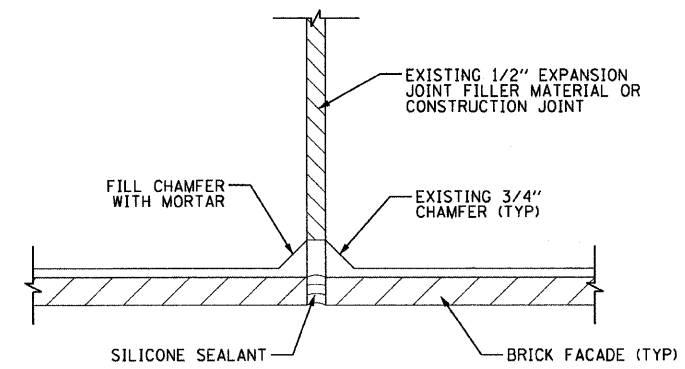


TYPICAL ABUTMENT SECTION

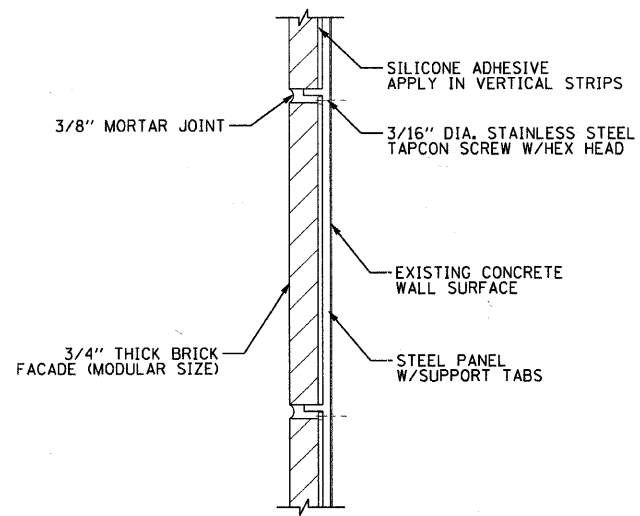


TYPICAL RETAINING WALL SECTION

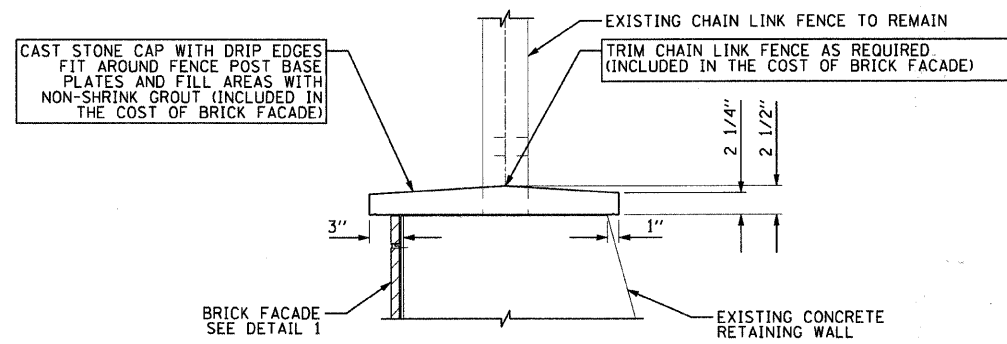


CONTROL JOINT DETAIL

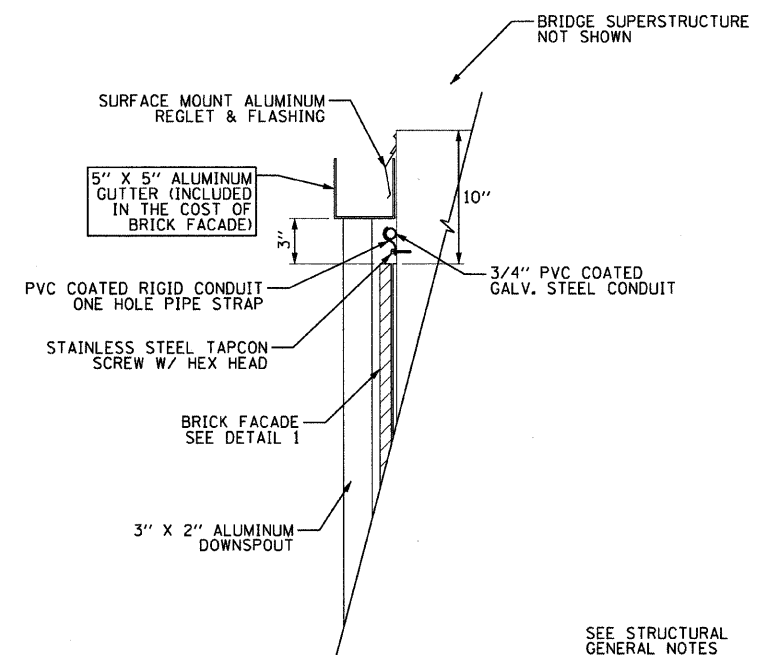
(MATCH EXISTING VERTICAL EXPANSION AND CONSTRUCTION JOINTS)



DETAIL 1



DETAIL 2



DETAIL 3

SEE STRUCTURAL GENERAL NOTES SHEET 3

COPYRIGHT © 2008 BY BAXTER & WOODMAN, INC. ...
 L.L. BAXTER & WOODMAN, INC. 11/22/2010 9:58:04 AM
 PROJECT: VILLAGE OF RICHTON PARK, ILLINOIS
 SHEET: 11 OF 11



DESIGNED - AS	REVISED -
DRAWN - KAR	REVISED -
CHECKED - TMS	REVISED -
DATE - 12-08-08	REVISED -

**VILLAGE OF RICHTON PARK, ILLINOIS
FAU ROUTE 1632 (SAUK TRAIL)
STREETSCAPE**

STRUCTURAL DETAILS

SCALE: NONE

STA. TO STA.

F.A.U. RTE. 1632	SECTION 06-00041-00-LS	COUNTY COOK	TOTAL SHEETS 11	SHEET NO. 8
CONTRACT NO. 63447				
FED. ROAD DIST. NO. ILLINOIS FED. AID PROJECT				