

FOR INDEX OF SHEETS, SEE SHEET NO. 2

FOR INDEX OF HIGHWAY STANDARDS, SEE SHEET NO. 2

STATE OF ILLINOIS DEPARTMENT OF TRANSPORTATION DIVISION OF HIGHWAYS PLANS FOR PROPOSED FEDERAL AID PROJECT

FAU ROUTE 1632 (SAUK TRAIL) RICHTON ROAD TO RICHTON SQUARE ROAD STREETScape PROJECT NO.: TE-00D1 (712) SECTION NO.: 06-00041-00-LS VILLAGE OF RICHTON PARK COOK COUNTY JOB NO.: C-91-045-07

F.A.U. RTE.	SECTION	COUNTY	TOTAL SHEETS	SHEET NO.
1632	06-00041-00-LS	COOK	11	1
STA.		TO STA.		
FED. ROAD DIST. NO		ILLINOIS	FED AID PROJECT TE-00D1 (712)	

C-91-045-07
CONTRACT 63447

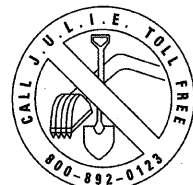
**THIS PROJECT IS
LOCATED WITHIN
THE VILLAGE OF
RICHTON PARK**

**SAUK TRAIL
PROJECT BEGINS
STA 68+00**

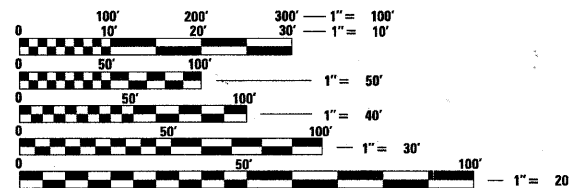
**SAUK TRAIL
PROJECT ENDS
STA 75+89**

DESIGN DESIGNATION:
ARTERIAL

TRAFFIC DATA:
POSTED AND DESIGN SPEED = 35 MPH
2006 ADT = 30,000

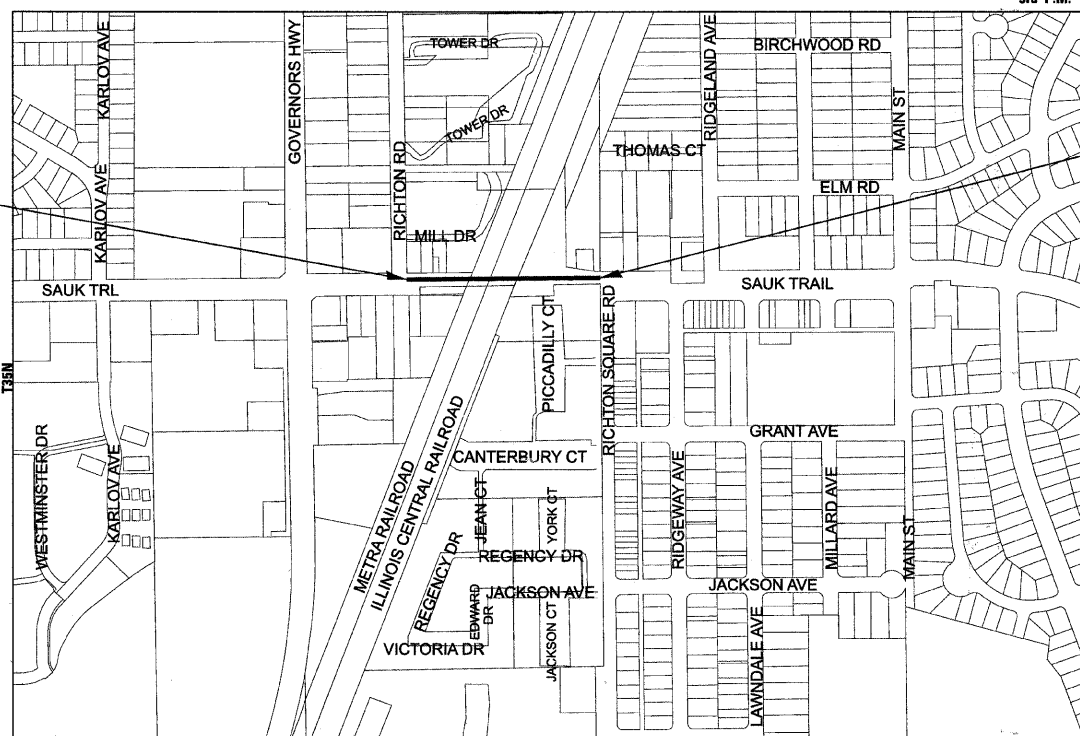


CALL 48 HOURS BEFORE YOU DIG



FULL SIZE PLANS HAVE BEEN PREPARED USING STANDARD ENGINEERING SCALES. REDUCED SIZED PLANS WILL NOT CONFORM TO STANDARD SCALES. IN MAKING MEASUREMENTS ON REDUCED PLANS, THE ABOVE SCALES MAY BE USED.

J.U.L.I.E.
JOINT UTILITY LOCATION INFORMATION FOR EXCAVATION
1-800-892-0123



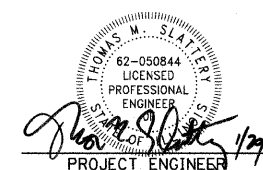
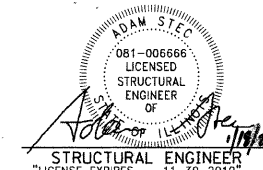
R13E
LOCATION MAP
SCALE: NOT TO SCALE
GROSS LENGTH OF IMPROVEMENT = 789 LF OR 0.149 MILES
NET LENGTH OF IMPROVEMENT = 789 LF OR 0.149 MILES

BAXTER & WOODMAN, INC.
STATE OF ILLINOIS - PROFESSIONAL DESIGN FIRM
LICENSE NO. - 184-001121 - EXPIRES 4/30/2011



Burlington, Wisconsin 262.763.7834 Crystal Lake, Illinois 815.459.1260 DeKalb, Illinois 815.787.3111 Itasca, Illinois 630.773.1870 Mokena, Illinois 708.560.7070 Grayslake, Illinois (Plainfield, Illinois) 847.223.5088 Rockford, Illinois 815.609.7425 Madison, Wisconsin 815.489.1551 608.347.1542

(OFFICE WHICH PREPARED PLANS)



STATE OF ILLINOIS
DEPARTMENT OF TRANSPORTATION
DIVISION OF HIGHWAYS

APPROVED January 20, 2010
[Signature]
VILLAGE OF RICHTON PARK, VILLAGE PRESIDENT

PASSED January 29, 2010
[Signature]
DISTRICT 1 ENGINEER OF LOCAL ROADS & STREETS

RELEASING FOR BID
BASED ON LIMITED
REVIEW FEBRUARY 1, 2010
[Signature]
DEPUTY DIRECTOR OF
HIGHWAYS, REGION 1 ENGINEER

**PRINTED BY THE AUTHORITY
OF THE STATE OF ILLINOIS**

CONTRACT NO. 63447

B&W PROJECT NO.: 070190.40 DATE: 01-18-10

Copyright © 2007 by Baxter & Woodman, Inc. All rights reserved. This drawing is the property of Baxter & Woodman, Inc. and is not to be reproduced without written permission. Project No. 070190.40, Sheet No. 1 of 11. Date: 01/18/10. Field Engineer: Melchor Mangoba, P.E. 847-705-4408

GENERAL NOTES

1. THE CONTRACTOR SHALL PROTECT AND CAREFULLY PRESERVE ALL SECTION OR SUBSECTION MONUMENTS OR PROPERTY OR REFERENCE MARKERS UNTIL THE OWNER, HIS AGENT, OR AN AUTHORIZED SURVEYOR HAS WITNESSED OR OTHERWISE REFERENCED THEIR LOCATIONS.
2. THE CONTRACTOR SHALL BE RESPONSIBLE FOR CONTACTING THE OWNERS OF ALL EXISTING UTILITIES SO THAT THE UTILITIES AND THEIR APPURTENANCES MAY BE LOCATED AND ADJUSTED OR MOVED, IF NECESSARY, PRIOR TO THE START OF CONSTRUCTION OPERATIONS. THE CONTRACTOR SHALL COOPERATE WITH ALL UTILITY OWNERS AS PROVIDED IN THE STANDARD SPECIFICATIONS AND/OR SPECIAL PROVISIONS. UTILITY LOCATIONS ARE APPROXIMATE ONLY. THE CONTRACTOR SHALL USE CAUTION WHERE THERE ARE POTENTIAL CONFLICTS.
3. THE CONTRACTOR SHALL BE RESPONSIBLE FOR THE PROTECTION OF ALL UNDERGROUND OR SURFACE UTILITIES EVEN THOUGH THEY MAY NOT BE SHOWN ON THE PLANS. ANY UTILITY THAT IS DAMAGED DURING CONSTRUCTION SHALL BE REPAIRED TO THE SATISFACTION OF THE ENGINEER OR THE OWNER OR REPLACED. THIS WORK SHALL BE AT THE CONTRACTOR'S EXPENSE.
4. THE CONTRACTOR SHALL PROTECT AND REPLACE ALL SIGNS REMOVED DURING CONSTRUCTION AS NEAR AS POSSIBLE TO THEIR ORIGINAL LOCATION, OR AS DETERMINED BY THE ENGINEER. THIS WORK SHALL BE INCLUDED IN THE COST OF THE CLEANING AND PAINTING CHAIN LINK FENCE PAY ITEM.
5. ALL SAW CUTTING SHALL BE INCLUDED IN THE UNIT COST OF THE PAY ITEM INDICATED FOR REMOVAL.
6. ALL CONSTRUCTION PERSONNEL WILL BE REQUIRED TO WEAR A FLUORESCENT VEST PER ARTICLE 701.12 AND 701.13 OF THE STANDARD SPECIFICATIONS AT ALL TIMES WHILE ON THE CONSTRUCTION SITE. COMPLIANCE WITH THIS REQUIREMENT SHALL BE INCLUDED IN THE CONTRACT.
7. BEFORE STARTING ANY EXCAVATION, THE CONTRACTOR SHALL CALL "JULIE" AT 800-892-0123 FOR FIELD LOCATIONS OF BURIED ELECTRIC, TELEPHONE AND GAS FACILITIES. (48 HOURS NOTIFICATION IS REQUIRED)
8. BARRICADE: THE CONTRACTOR SHALL PROVIDE AND INSTALL TWO (2) WEIGHTED SANDBAGS ON EACH TYPE I OR TYPE II BARRICADE USED - ONE (1) WEIGHTED SANDBAG ACROSS EACH BOTTOM RAIL.
9. THE CONTRACTOR SHALL NOTIFY VILLAGE PUBLIC WORKS AT LEAST 48 HOURS IN ADVANCE OF BEGINNING WORK TO OBTAIN VILLAGE UTILITY LOCATIONS AND SHALL COORDINATE ALL CONSTRUCTION OPERATIONS WITH THE ENGINEER.
10. MATERIALS RESULTING FROM THE REMOVAL OF SIDEWALK SHALL BE REMOVED AT THE END OF EACH DAY TO AN APPROVED SITE. IN THE JUDGMENT OF THE VILLAGE, SHOULD IT BE NECESSARY TO REMOVE SUCH MATERIALS, THE VILLAGE WILL HAVE THE MATERIAL REMOVED AND THE CONTRACTOR WILL BE BILLED (CHARGED) ACCORDINGLY.
11. THE CONTRACTOR MAY OBTAIN MUNICIPAL WATER IN BULK, AT NO CHARGE, AS LONG AS THERE IS NOT A "WATERING" BAN IN EFFECT. THE INDISCRIMINATE USE OF FIRE HYDRANTS IS STRICTLY PROHIBITED. WATER FOR CONSTRUCTION SHALL BE METERED OR OTHERWISE ACCOUNTED FOR AND A DAILY LOG MAINTAINED. THE CONTRACTOR SHALL PROVIDE THE WATER TRUCK AND DRIVER REQUIRED TO OBTAIN AND TRANSPORT THIS WATER. THE VILLAGE RESERVES THE RIGHT TO RESTRICT OR REFUSE THE USE OF VILLAGE WATER IF DEEMED NECESSARY.
12. IN AREAS WHERE THE EXISTING SIDEWALK TO BE REMOVED AND REPLACED, THE REMOVAL AND DISPOSAL OF ANY ADDITIONAL MATERIAL REQUIRED TO ESTABLISH THE PROPOSED SIDEWALK SUBGRADE ELEVATION SHALL BE INCLUDED IN THE PAY ITEM FOR PORTLAND CEMENT CONCRETE SIDEWALK REMOVAL AND REPLACEMENT.
13. THE CONTRACTOR SHALL LIMIT THE WORK TO ONE SIDE OF THE STREET UNLESS AS DIRECTED OTHERWISE BY THE ENGINEER.
14. ALL CONSTRUCTION SHALL BE DONE IN ACCORDANCE WITH THE DETAILS IN THE PLANS, THE SPECIAL PROVISIONS INCLUDED IN THE CONTRACT DOCUMENTS, AND THE LATEST EDITION OF THE FOLLOWING STATE OF ILLINOIS SPECIFICATIONS: "THE STANDARD SPECIFICATIONS FOR ROAD AND BRIDGE CONSTRUCTION" (REFERRED TO AS THE "STANDARD SPECIFICATIONS"), THE "SUPPLEMENTAL SPECIFICATIONS AND RECURRING SPECIAL PROVISIONS", THE "MANUAL ON UNIFORM TRAFFIC CONTROL DEVICES FOR STREETS AND HIGHWAYS", THE "MANUAL OF TEST PROCEDURES FOR MATERIALS" AND THE "STANDARD SPECIFICATIONS FOR WATER AND SEWER MAIN CONSTRUCTION IN ILLINOIS".

SUMMARY OF QUANTITIES

CODE NO.	PAY ITEM	UNIT	TOTAL QUANTITY CONSTRUCTION CODE Y003
# 42400430	PORTLAND CEMENT CONCRETE SIDEWALK, 5-INCH, SPECIAL	SQ FT	200
44000600	SIDEWALK REMOVAL	SQ FT	1800
# 44001700	COMBINATION CONCRETE CURB AND GUTTER REMOVAL AND REPLACEMENT	FOOT	30
X # 50600200	PAINTING STEEL RAILING	FOOT	400
67100100	MOBILIZATION	L SUM	1
70102630	TRAFFIC CONTROL & PROTECTION - STANDARD 701601	L SUM	1
70102640	TRAFFIC CONTROL & PROTECTION - STANDARD 701801	L SUM	1
# 78200410	GUARDRAIL MARKERS, TYPE A	EACH	6
# 78201000	TERMINAL MARKER - DIRECT APPLIED	EACH	2
X # 81100220	CONDUIT ATTACHED TO STRUCTURE, 3/4" DIA., PVC COATED GALVANIZED STEEL	FOOT	470
X # 81300220	JUNCTION BOX, STAINLESS STEEL, ATTACHED TO STRUCTURE, 6" X 6" X 4"	EACH	12
X # 81700325	ELECTRIC CABLE IN CONDUIT, 600V (EPR-TYPE RHW) 3-1/C NO. 8	FOOT	570
X # 82107300	UNDERPASS LUMINAIRE, 150 WATT, HIGH PRESSURE SODIUM VAPOR	EACH	12
X # 82500505	LIGHTING CONTROLLER, SPECIAL	EACH	1
X # 84500110	REMOVAL OF LIGHTING CONTROLLER	EACH	1
# LR430040	PAVING BRICK SIDEWALK	SQ YD	1350
X # X0323157	REMOVE LUMINAIRE FROM UNDERPASS	EACH	12
X # X0639515	CHAIN LINK FENCE REPAIR	FOOT	780
X # XX001249	ORNAMENTAL FENCE	FOOT	1500
# XX005096	TRENCH FRAMES AND GRATES	FOOT	64
X # XX006767	LIQUIDTIGHT FLEXIBLE METAL CONDUIT, 3/4"	FOOT	50
XX006783	SIGN PANEL, FURNISHED AND INSTALLED	EACH	10
# XX006991	BRICK FACADE	SQ FT	15500
X # XX008162	MAINTAIN LIGHTING SYSTEM	L SUM	1
# XX007448	CONCRETE EDGING 6" WIDE	FOOT	840
# Z0048665	RAILROAD PROTECTIVE LIABILITY INSURANCE	L SUM	1

X - SPECIALITY ITEM
- SPECIAL PROVISION

INDEX OF SHEETS

SHEET NO.	TITLE
1	COVER SHEET
2	GENERAL NOTES, SUMMARY OF QUANTITIES, INDEX OF SHEETS AND HIGHWAY STANDARDS
3	PLAN: SAUK TRAIL
4	NORTH AND SOUTH ABUTMENT ELEVATIONS
5	RETAINING WALL ELEVATIONS
6	CENTER PIER ELEVATIONS
7	LIGHTING PLAN: SAUK TRAIL
8	STRUCTURAL DETAILS
9	PIER, FENCE AND SIDEWALK DETAILS
10	ELECTRICAL DETAILS
11	DISTRICT ONE DETAIL TC-10: TRAFFIC CONTROL & PROTECTION FOR SIDE ROADS, INTERSECTIONS AND DRIVEWAYS

STANDARD NO. HIGHWAY STANDARDS

000001-05	STANDARD SYMBOLS AND ABBREVIATIONS
635006-03	REFLECTOR AND TERMINAL MARKER PLACEMENT
635011-02	REFLECTOR MARKER AND MOUNTING DETAILS
701601-06	URBAN LANE CLOSURE, MULTILANE, 1W OR 2W, WITH NONTRANSVERSABLE MEDIAN
701801-04	LANE CLOSURE MULTILANE 1W OR 2W CROSSWALK OR SIDEWALK CLOSURE
701901-01	TRAFFIC CONTROL DEVICES

COPYRIGHT © 2008 BY BAXTER & WOODMAN, INC.
 STATE OF ILLINOIS - PROFESSIONAL DESIGN FIRM
 LICENSE NO. - 184-00021 - EXPIRES 4/30/2009
 12/22/2008



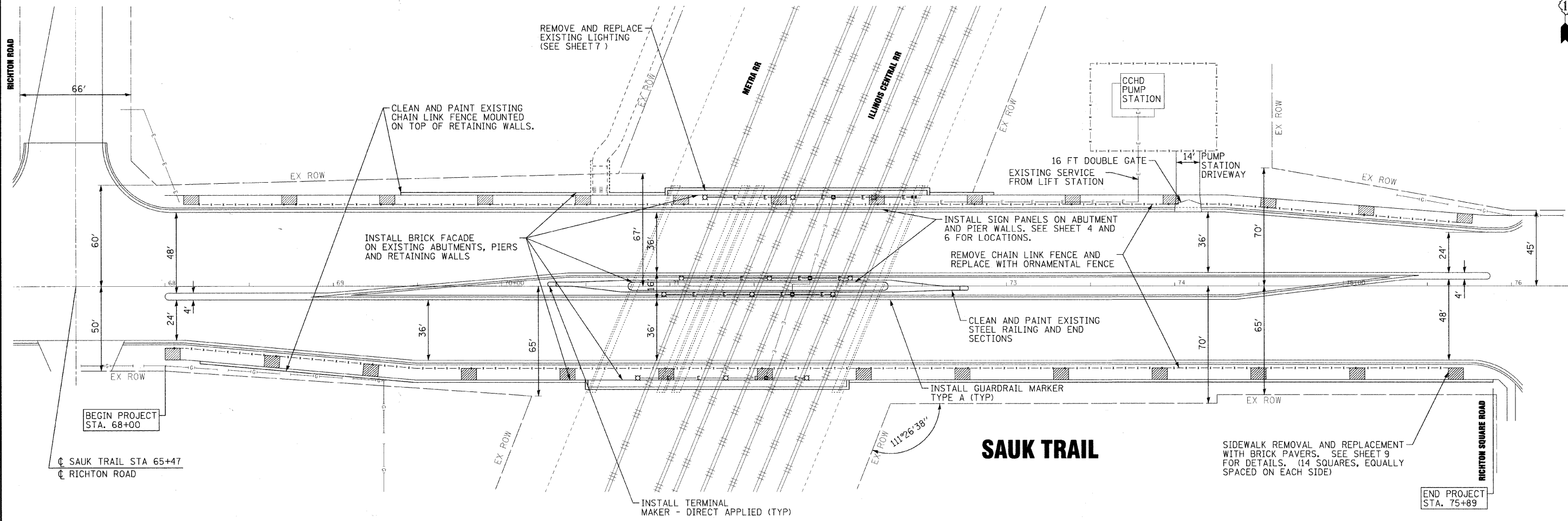
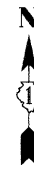
DESIGNED - AS	REVISED -
DRAWN - KAR	REVISED -
CHECKED - TMS	REVISED -
DATE - 12-08-08	REVISED -

**VILLAGE OF RICHTON PARK, ILLINOIS
FAU ROUTE 1632 (SAUK TRAIL)
STREETSCAPE**

**GENERAL NOTES, SUMMARY OF QUANTITIES,
INDEX OF SHEETS AND HIGHWAY STANDARDS**

SCALE: STA. TO STA.

F.A.U. RTE.	SECTION	COUNTY	TOTAL SHEETS	SHEET NO.
1632	06-00041-00-LS	COOK	11	2
CONTRACT NO. 63447				
FED. ROAD DIST. NO. ILLINOIS FED. AID PROJECT				



1. DESIGN SPECIFICATIONS: AASHTO "STANDARD SPECIFICATIONS FOR HIGHWAY BRIDGES", DATED 2002, INCLUDING 2003 INTERIMS.
 2. CONSTRUCTION SPECIFICATIONS: IDOT "STANDARD SPECIFICATIONS FOR ROAD AND BRIDGE CONSTRUCTION" ADOPTED JANUARY 1, 2007 AND "SUPPLEMENTAL SPECIFICATIONS AND RECURRING SPECIAL PROVISIONS" ADOPTED JANUARY 1, 2010.
 3. EXISTING FACILITY DIMENSIONS AND ELEVATIONS ARE SHOWN FOR REFERENCE ONLY. FIELD VERIFY AS BUILT CONDITIONS PRIOR TO CONSTRUCTION.
 4. PROVIDE TEMPORARY SHORING OF EXISTING STRUCTURE AS REQUIRED DURING CONSTRUCTION.
5. PAINT ALUMINUM SURFACES IN CONTACT WITH CONCRETE WITH ONE HEAVY COAT OF BITUMINOUS PAINT, TMEC 46-465 OR EQUAL. INCLUDED IN THE COST OF MASONRY VENEER.

COPYRIGHT © 2008 BY BAXTER & WOODMAN, INC.
 STATE OF ILLINOIS - PROFESSIONAL DESIGN FIRM
 LICENSE NO. - 04-0022287
 12/2/2008



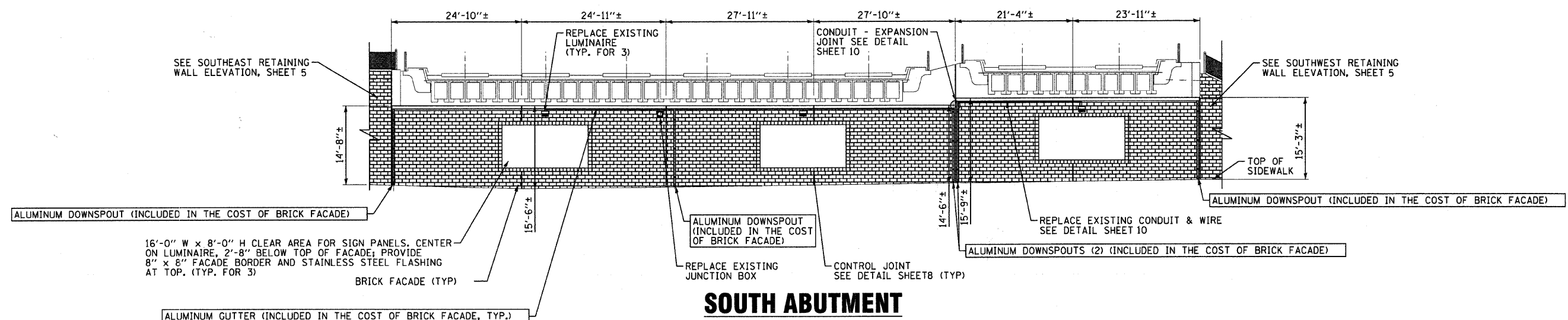
DESIGNED - AS	REVISED -
DRAWN - KAR	REVISED -
CHECKED - TMS	REVISED -
DATE - 12-08-08	REVISED -

VILLAGE OF RICHTON PARK, ILLINOIS
FAU ROUTE 1632 (SAUK TRAIL)
STREETSCAPE

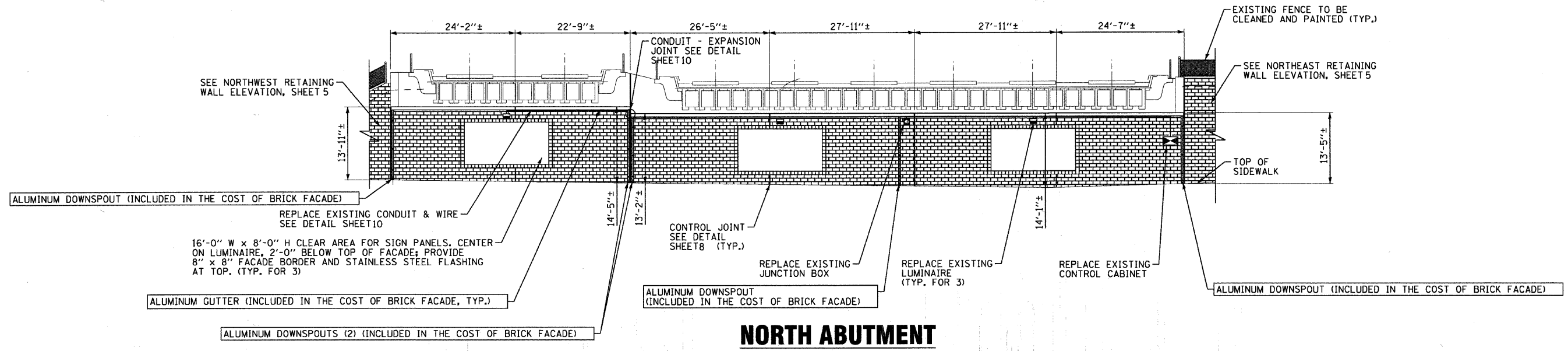
PLAN: SAUK TRAIL

SCALE: 1" = 30' STA. TO STA.

F.A.U. RTE.	SECTION	COUNTY	TOTAL SHEETS	SHEET NO.
1632	06-00041-00-LS	COOK	11	3
CONTRACT NO. 63447				
FED. ROAD DIST. NO. ILLINOIS FED. AID PROJECT				



SOUTH ABUTMENT



NORTH ABUTMENT

SEE STRUCTURAL GENERAL NOTES SHEET 3

COPYRIGHT © 2008 BY BAXTER & WOODMAN, INC.
 ALL RIGHTS RESERVED. THIS DOCUMENT IS THE PROPERTY OF BAXTER & WOODMAN, INC. AND IS TO BE USED ONLY FOR THE PROJECT AND SITE SPECIFICALLY IDENTIFIED HEREIN. ANY REPRODUCTION OR TRANSMISSION IN ANY FORM OR BY ANY MEANS, WITHOUT THE WRITTEN PERMISSION OF BAXTER & WOODMAN, INC. IS PROHIBITED.
 PROJECT: VILLAGE OF RICHTON PARK, ILLINOIS
 SHEET: NORTH & SOUTH ABUTMENT ELEVATIONS
 DATE: 12/22/2010 9:28:38 AM



DESIGNED - AS	REVISED -
DRAWN - KAR	REVISED -
CHECKED - TMS	REVISED -
DATE - 12-08-08	REVISED -

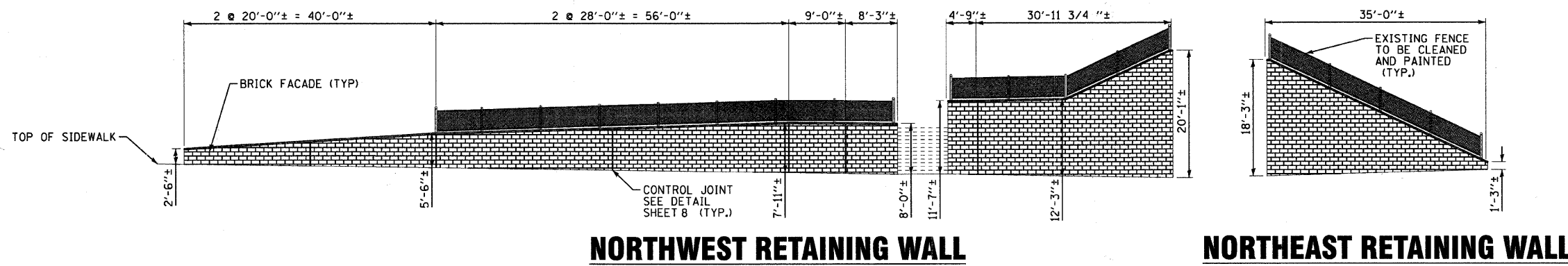
VILLAGE OF RICHTON PARK, ILLINOIS
FAU ROUTE 1632 (SAUK TRAIL)
STREETSCAPE

NORTH & SOUTH ABUTMENT ELEVATIONS

SCALE: 1" = 10'

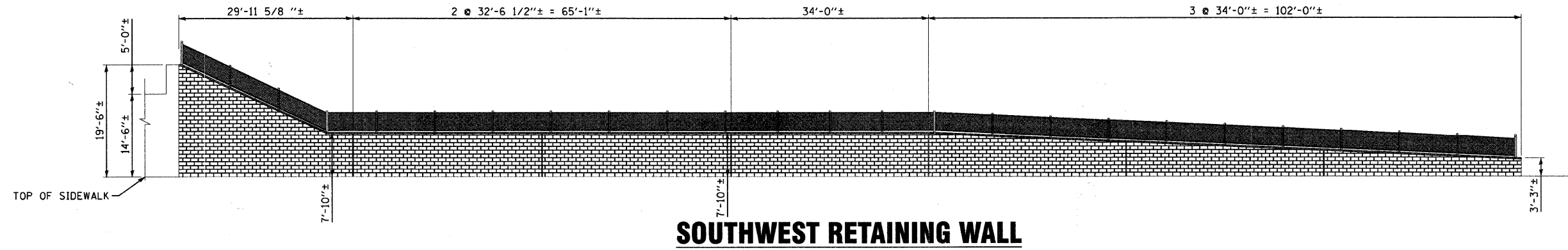
STA. TO STA.

F.A.U. RTE. 1632	SECTION 06-00041-00-LS	COUNTY COOK	TOTAL SHEETS 11	SHEET NO. 4
CONTRACT NO. 63447				
FED. ROAD DIST. NO. ILLINOIS FED. AID PROJECT				

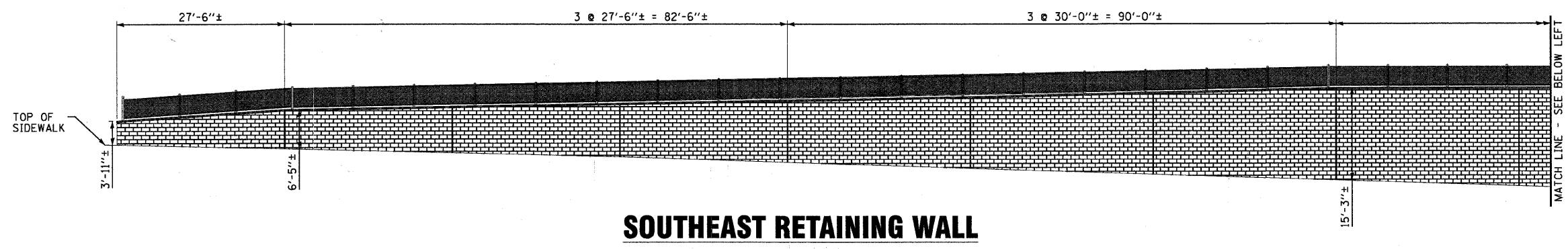


NORTHWEST RETAINING WALL

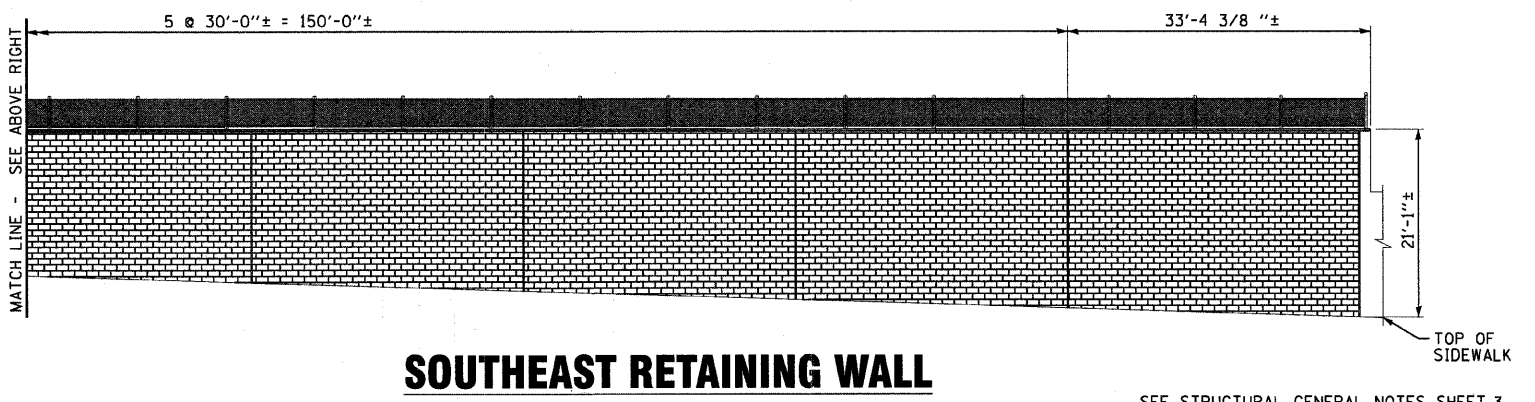
NORTHEAST RETAINING WALL



SOUTHWEST RETAINING WALL



SOUTHEAST RETAINING WALL



SOUTHEAST RETAINING WALL

SEE STRUCTURAL GENERAL NOTES SHEET 3

COPYRIGHT © 2008 BY BAXTER & WOODMAN, INC. ...
 L. L. BAXTER, P.E., 1000 N. LAUREL ST., CHICAGO, IL 60610
 WOODMAN, INC., 1000 N. LAUREL ST., CHICAGO, IL 60610
 DATE: 12-22-2010 9:28:46 AM



DESIGNED - AS	REVISED -
DRAWN - KAR	REVISED -
CHECKED - TMS	REVISED -
DATE - 12-08-08	REVISED -

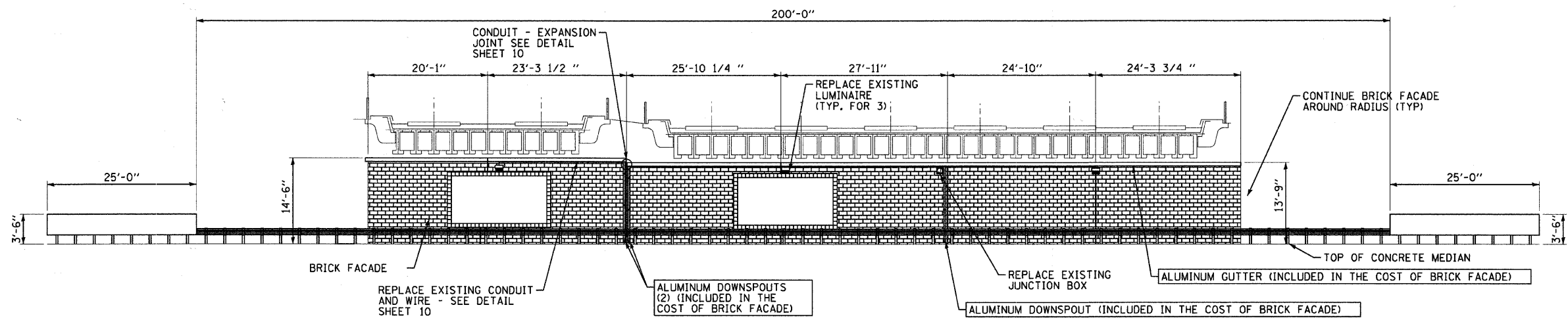
VILLAGE OF RICHTON PARK, ILLINOIS
 FAU ROUTE 1632 (SAUK TRAIL)
 STREETSCAPE

RETAINING WALL ELEVATIONS

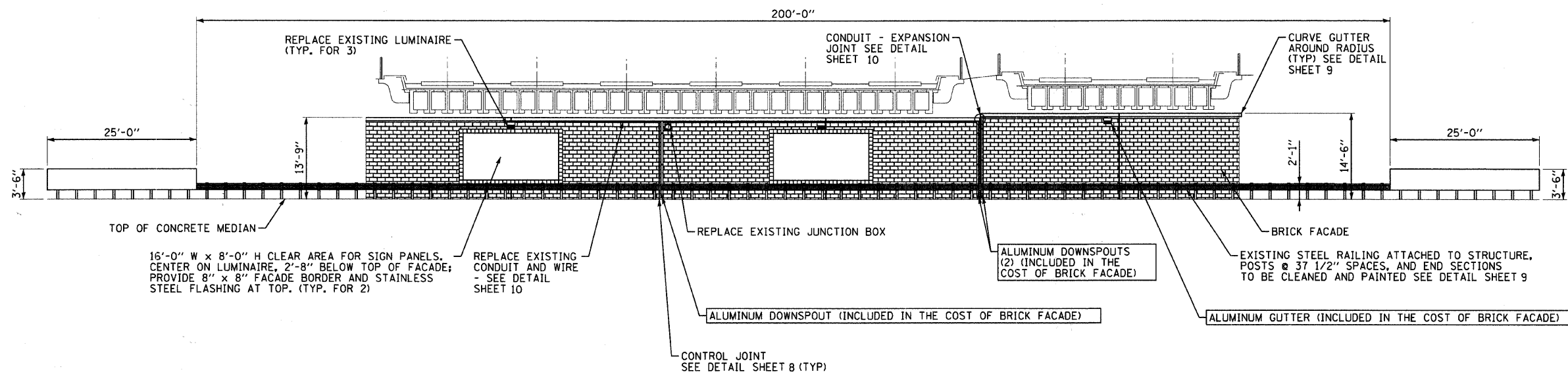
SCALE: 1" = 10'

STA. TO STA.

F.A.U. RTE. 1632	SECTION 06-00041-00-LS	COUNTY COOK	TOTAL SHEETS 11	SHEET NO. 5
FED. ROAD DIST. NO. ILLINOIS FED. AID PROJECT			CONTRACT NO. 63447	



PIER - LOOKING NORTH



PIER - LOOKING SOUTH

NOTES

- SEE STRUCTURAL GENERAL NOTES SHEET 3
- INSTALL 3/4" X 8" X 8" BRICK FACADE UNITS IN STACK BOND ON ROUNDED PIER ENDS. PROVIDE A SEALED CONTROL JOINT BETWEEN STACK BOND AND RUNNING BOND FACADE.

COPYRIGHT © 2008 BY BAXTER & WOODMAN, INC.
 ALL RIGHTS RESERVED.
 LICENSE NO. 184-00023 - EXPIRES 4/30/2009
 1/22/2010 9:28:45 AM
 I:\cnpk\070180\cadd\surveys\070180-erie\070180-erie-elevation.sht



DESIGNED - AS	REVISED -
DRAWN - KAR	REVISED -
CHECKED - TMS	REVISED -
DATE - 12-08-08	REVISED -

VILLAGE OF RICHTON PARK, ILLINOIS
 FAU ROUTE 1632 (SAUK TRAIL)
 STREETSCAPE

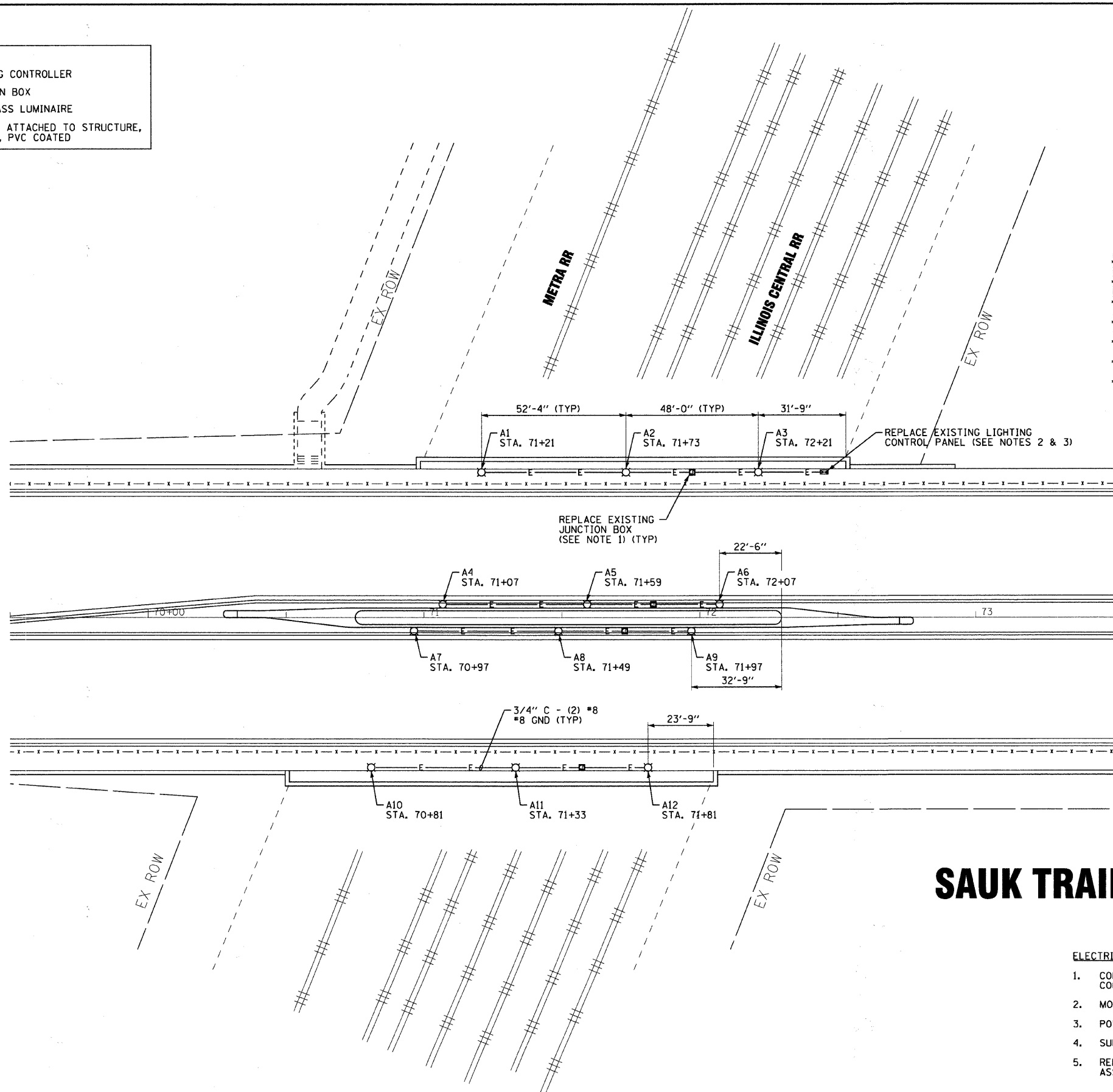
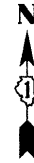
COMMUTER & MAIN LINE PIER ELEVATIONS

SCALE: 1" = 10'

STA. TO STA.

F.A.U. RTE.	SECTION	COUNTY	TOTAL SHEETS	SHEET NO.
1632	06-00041-00-LS	COOK	11	6
CONTRACT NO. 63447				
FED. ROAD DIST. NO.		ILLINOIS FED. AID PROJECT		

LEGEND	
■	PROPOSED LIGHTING CONTROLLER
□	PROPOSED JUNCTION BOX
⊠	PROPOSED UNDERPASS LUMINAIRE
—E—	PROPOSED CONDUIT ATTACHED TO STRUCTURE, GALVANIZED STEEL, PVC COATED



- ELECTRICAL GENERAL NOTES:**
1. CONNECT JUNCTION BOX TO EXISTING OVERHEAD LIGHTING CONDUIT (SEE DETAIL, SHEET 10).
 2. MOUNT ON NEW FACADE.
 3. POWER SUPPLIED FROM POWER PANEL IN PUMP STATION.
 4. SUPERSTRUCTURE REMOVED FOR CLARITY.
 5. REMOVE EXISTING UNDERPASS LIGHTING UNITS AND ASSOCIATED CONDUITS, ETC. ATTACHED TO PIER/ABUTMENT.

COPYRIGHT © 2008 BY BAXTER & WOODMAN, INC. ALL RIGHTS RESERVED. PROJECT NO. 06-00041-00-LS. SHEET NO. 11 OF 11. DATE: 12/22/2008.



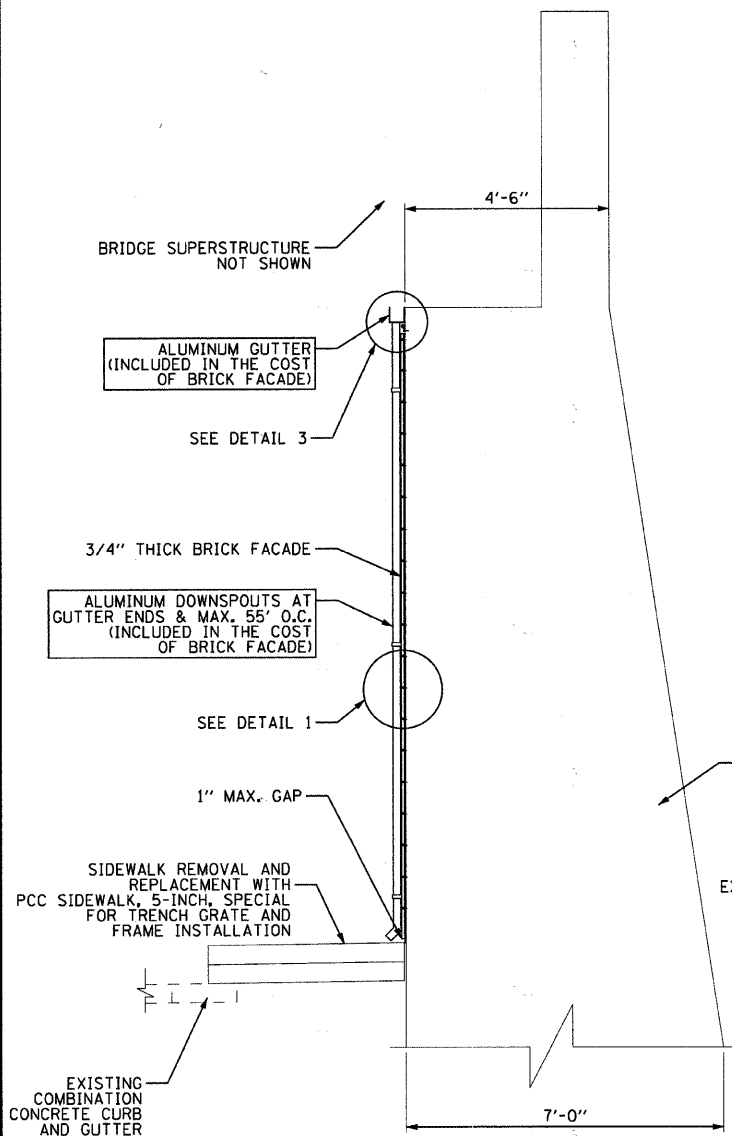
DESIGNED - AS	REVISED -
DRAWN - KAR	REVISED -
CHECKED - TMS	REVISED -
DATE - 12-08-08	REVISED -

VILLAGE OF RICHTON PARK, ILLINOIS
FAU ROUTE 1632 (SAUK TRAIL)
STREETSCAPE

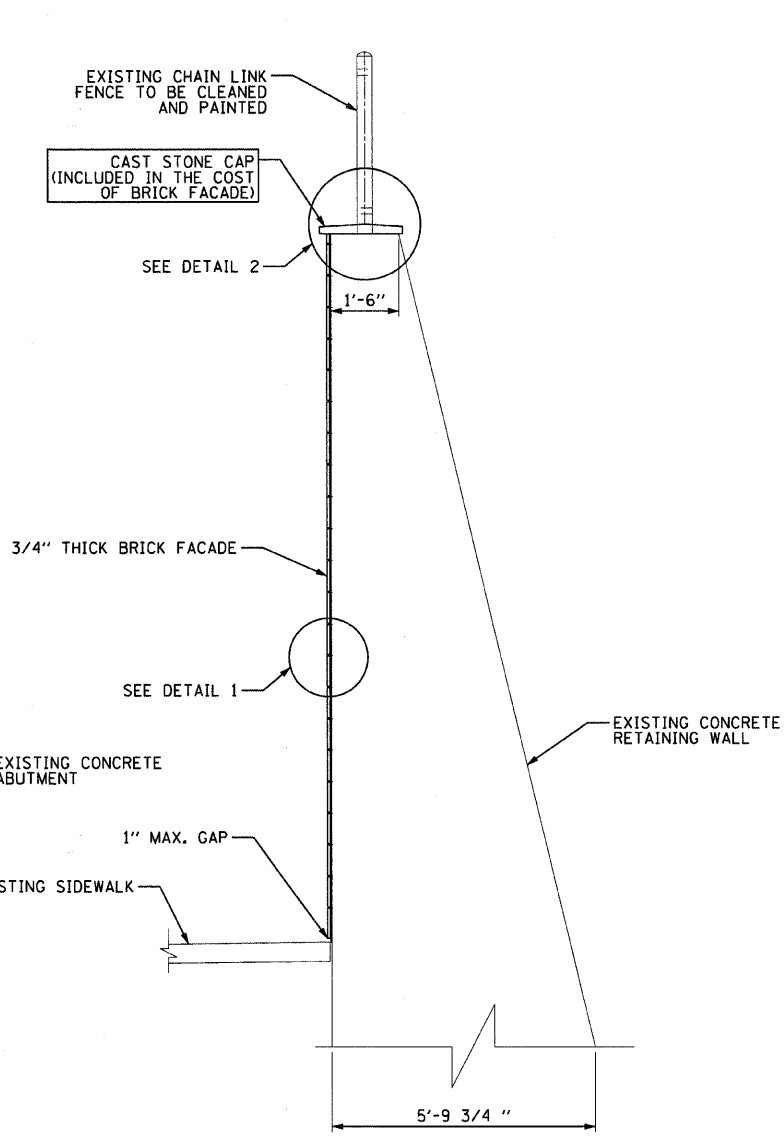
LIGHTING PLAN: SAUK TRAIL

SCALE: 1" = 20' STA. 69+50 TO STA. 73+50

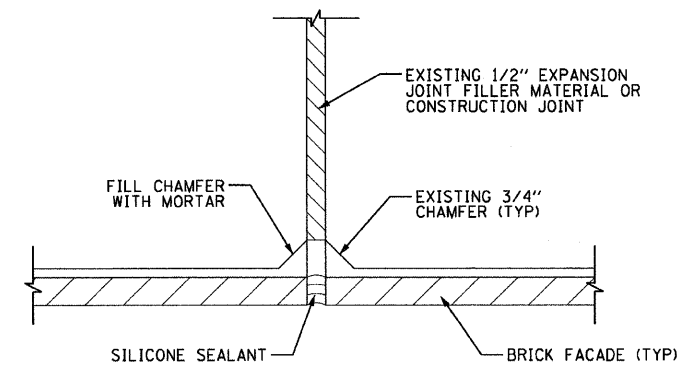
F.A.U. RTE.	SECTION	COUNTY	TOTAL SHEETS	SHEET NO.
1632	06-00041-00-LS	COOK	11	7
CONTRACT NO. 63447				
FED. ROAD DIST. NO.		ILLINOIS FED. AID PROJECT		



TYPICAL ABUTMENT SECTION

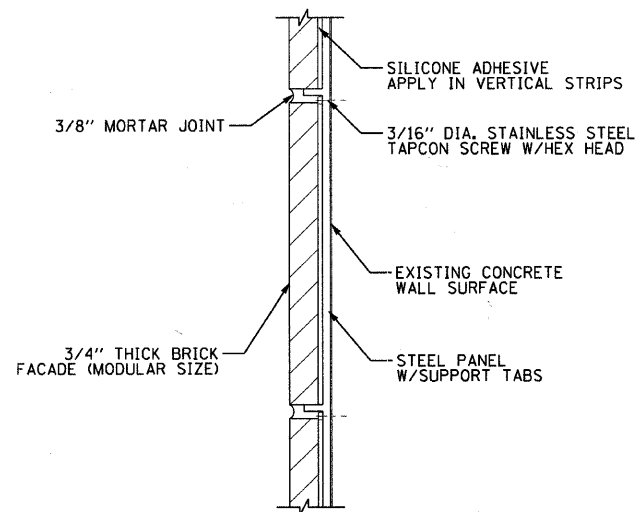


TYPICAL RETAINING WALL SECTION

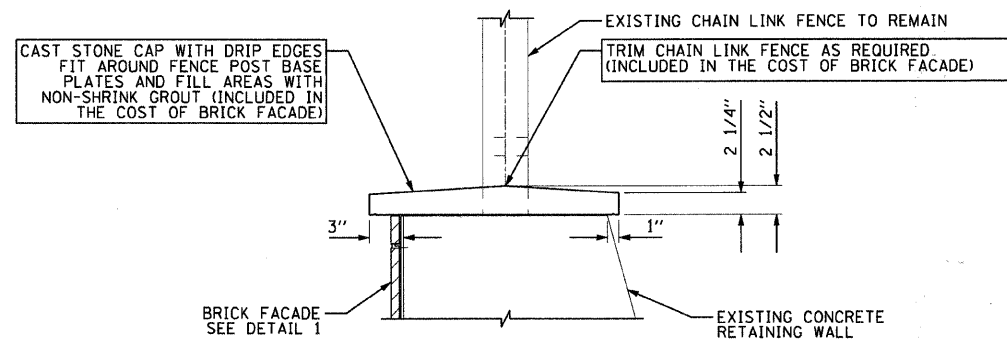


CONTROL JOINT DETAIL

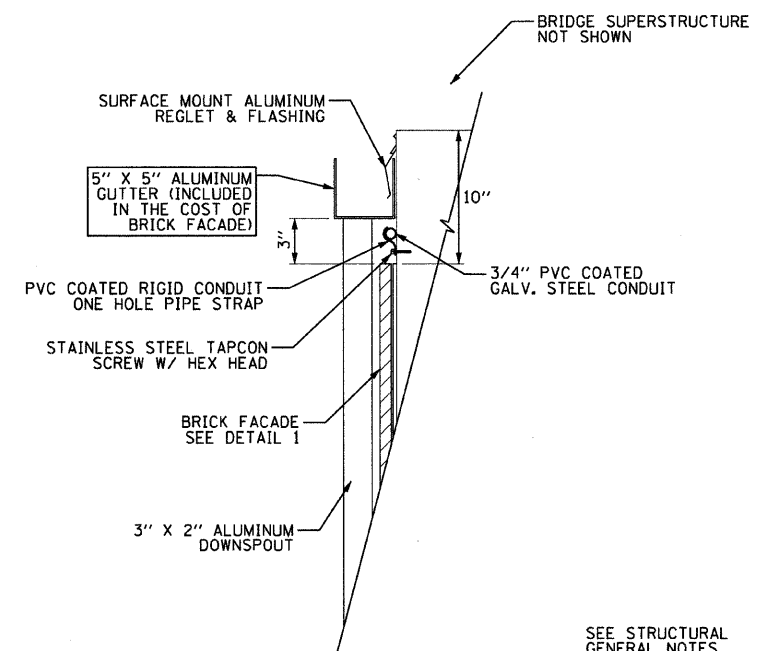
(MATCH EXISTING VERTICAL EXPANSION AND CONSTRUCTION JOINTS)



DETAIL 1



DETAIL 2



DETAIL 3

SEE STRUCTURAL GENERAL NOTES SHEET 3

COPYRIGHT © 2008 BY BAXTER & WOODMAN, INC. ...
 L.L. BAXTER & WOODMAN, INC. 11/22/2010 9:58:04 AM
 PROJECT: VILLAGE OF RICHTON PARK, ILLINOIS
 DRAWING: STREETScape - 12-08-08



DESIGNED - AS	REVISED -
DRAWN - KAR	REVISED -
CHECKED - TMS	REVISED -
DATE - 12-08-08	REVISED -

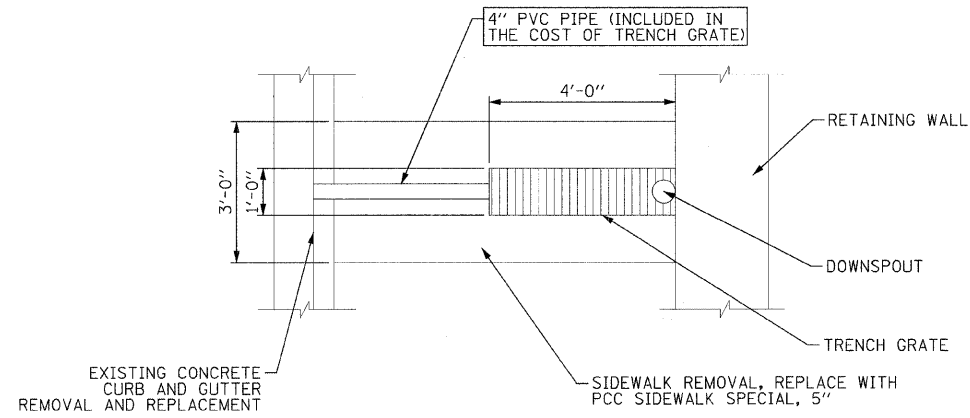
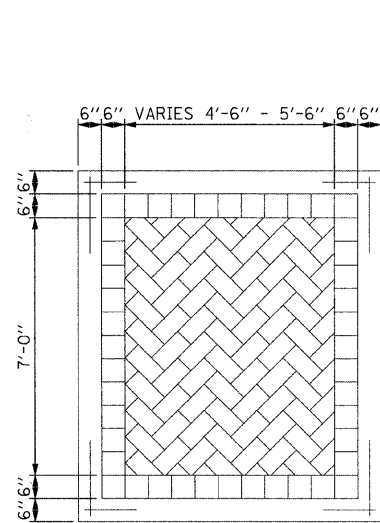
**VILLAGE OF RICHTON PARK, ILLINOIS
 FAU ROUTE 1632 (SAUK TRAIL)
 STREETScape**

STRUCTURAL DETAILS

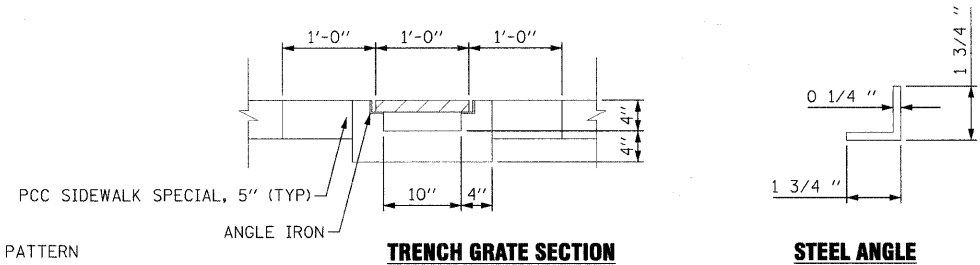
SCALE: NONE

STA. TO STA.

F.A.U. RTE. 1632	SECTION 06-00041-00-LS	COUNTY COOK	TOTAL SHEETS 11	SHEET NO. 8
CONTRACT NO. 63447				
FED. ROAD DIST. NO. ILLINOIS FED. AID PROJECT				

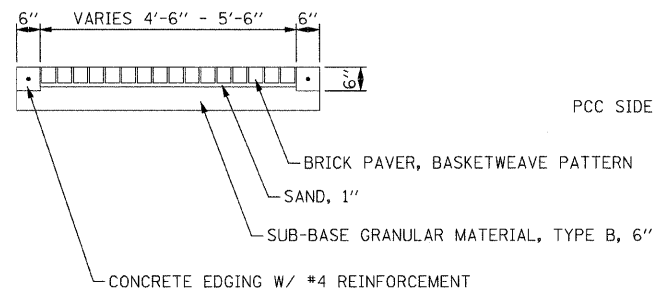


TRENCH GRATE PLAN

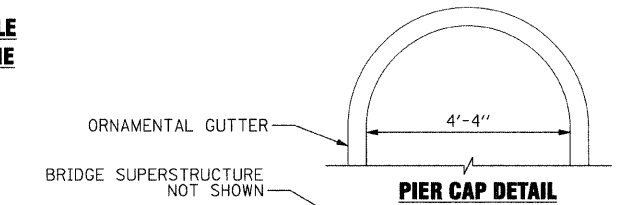


TRENCH GRATE SECTION

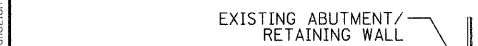
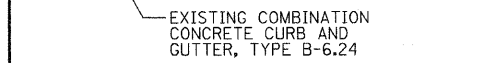
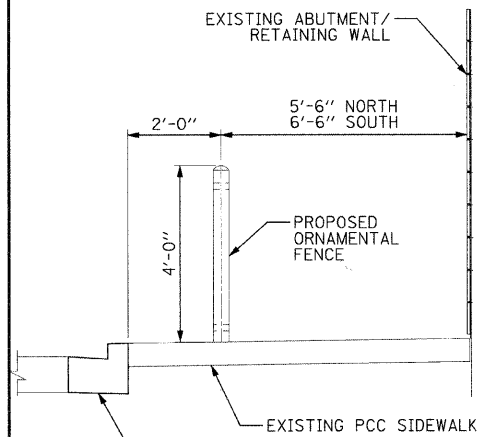
STEEL ANGLE IRON FRAME



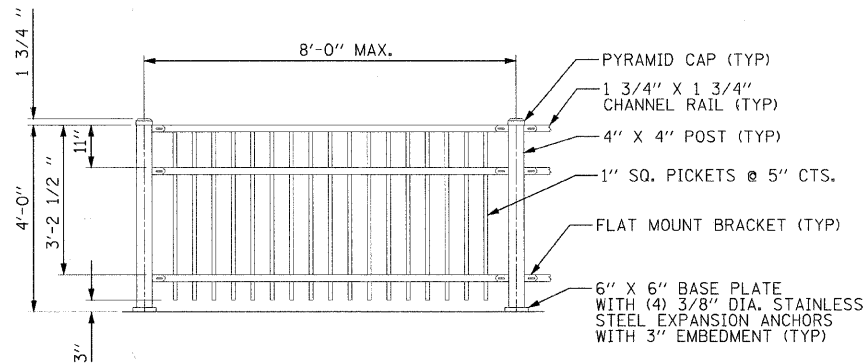
BRICK PAVER SIDEWALK DETAIL



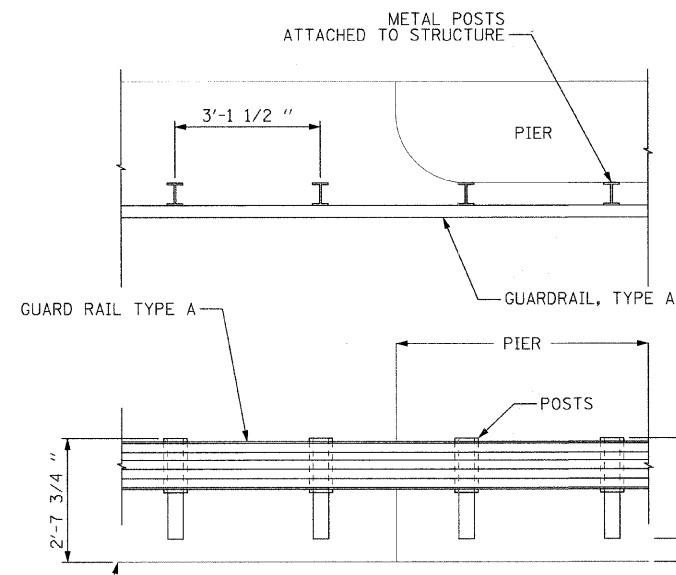
PIER CAP DETAIL



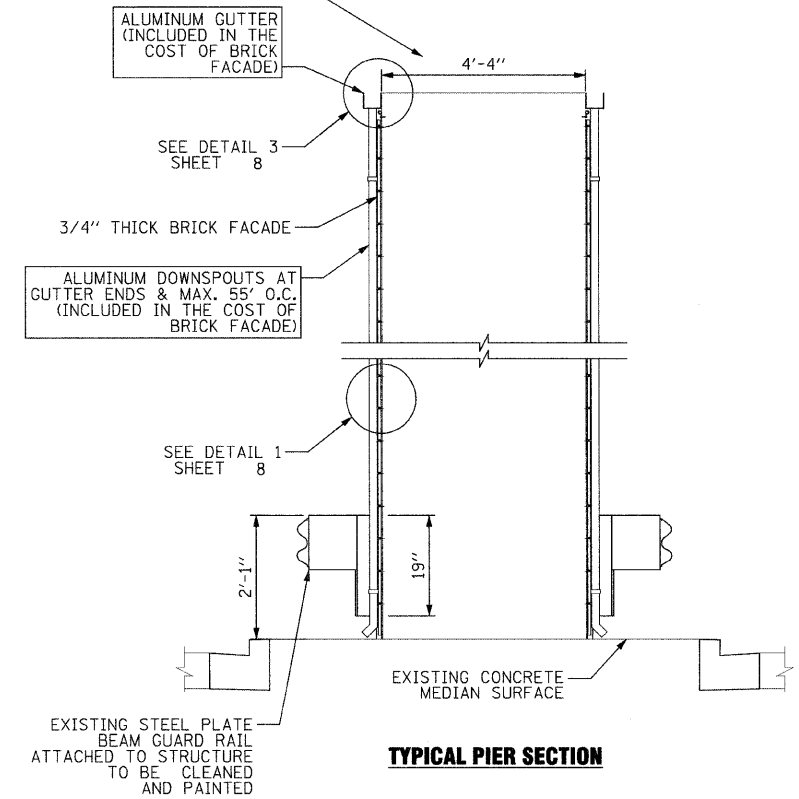
FENCE REPLACEMENT DETAILS



ORNAMENTAL FENCE



STEEL PLATE BEAM GUARD RAIL ATTACHED TO STRUCTURE



TYPICAL PIER SECTION

CONCRETE MEDIAN SURFACE

EXISTING STEEL PLATE BEAM GUARD RAIL ATTACHED TO STRUCTURE TO BE CLEANED AND PAINTED

COPYRIGHT © 2008 BY BAXTER & WOODMAN, INC.
 STATE OF ILLINOIS - PROFESSIONAL DESIGN FIRM
 LICENSE NO. - 084-00021, EXPIRES 12/31/2009
 PROJECT: VILLAGE OF RICHTON PARK, ILLINOIS
 SHEET: PIER, FENCE AND SIDEWALK DETAILS



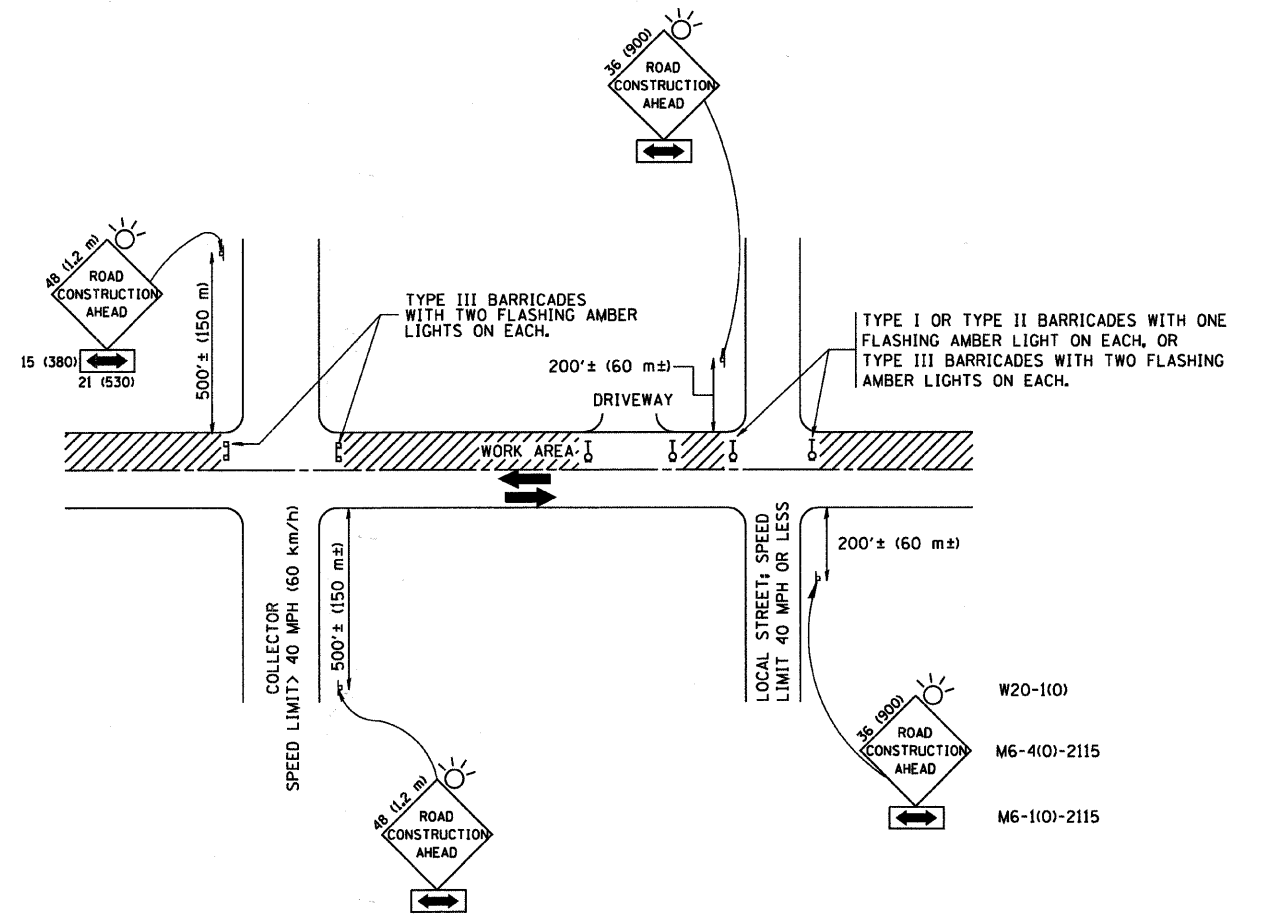
DESIGNED - AS	REVISED -
DRAWN - KAR	REVISED -
CHECKED - TMS	REVISED -
DATE - 12-08-08	REVISED -

**VILLAGE OF RICHTON PARK, ILLINOIS
FAU ROUTE 1632 (SAUK TRAIL)
STREETSCAPE**

PIER, FENCE AND SIDEWALK DETAILS

SCALE: NONE STA. TO STA.

F.A.U. RTE. 1632	SECTION 06-00041-00-LS	COUNTY COOK	TOTAL SHEETS 11	SHEET NO. 9
CONTRACT NO. 63447				
FED. ROAD DIST. NO. ILLINOIS FED. AID PROJECT				



TRAFFIC CONTROL AND PROTECTION FOR SIDE ROADS, INTERSECTIONS, AND DRIVEWAYS

NOTES:

- A. FOR NO LANE RESTRICTION ON THE SIDE ROAD OR DRIVEWAYS
 1. SIDE ROAD WITH A SPEED LIMIT OF 40 MPH (60 km/h) OR LESS AS SHOWN ON THE DRAWING AND AS DIRECTED BY THE ENGINEER:
 - a) ONE ROAD CONSTRUCTION AHEAD SIGN 36 x 36 (900x900) WITH A FLASHER AND FLAG MOUNTED ON IT APPROXIMATELY 200' (60 m) IN ADVANCE OF THE MAIN ROUTE.
 - b) THE CLOSED PORTION OF THE MAIN ROUTE SHALL BE PROTECTED BY BLOCKING WITH TYPE I, TYPE II OR TYPE III BARRICADES, 1/3 OF THE CROSS SECTION OF THE CLOSED PORTION.
 2. SIDE ROAD WITH A SPEED LIMIT GREATER THAN 40 MPH (60 km/h) AS SHOWN ON THE DRAWING AND AS DIRECTED BY THE ENGINEER:
 - a) ONE ROAD CONSTRUCTION AHEAD SIGN 48 x 48 (1.2 m x 1.2 m) WITH A FLASHER MOUNTED ON IT APPROXIMATELY 500' (150 m) IN ADVANCE OF THE MAIN ROUTE.
 - b) THE CLOSED PORTION OF THE MAIN ROUTE SHALL BE PROTECTED BY BLOCKING WITH TYPE III BARRICADES, 1/2 OF THE CROSS SECTION OF THE CLOSED PORTION.
 3. WHEN THE SIDE ROAD LIES BETWEEN THE BEGINNING OF THE MAINLINE SIGNING AND THE WORK ZONE, A SINGLE HEADED ARROW (M6-1) SHALL BE USED IN LIEU OF THE DOUBLE HEADED ARROW (M6-4).
- B. FOR A LANE CLOSURE ON A SIDE ROAD OR DRIVEWAY:

USE APPLICABLE PORTIONS OF THE TYPICAL APPLICATION OF TRAFFIC CONTROL DEVICES (STD. 701501, STD. 701606 OR THE APPROPRIATE STANDARD). THE SPACING OF SIGNS AND BARRICADES SHALL BE ADJUSTED FOR FIELD CONDITIONS AS DIRECTED BY THE ENGINEER. THE DIRECTIONAL ARROW SHALL BE COVERED OR REMOVED WHEN NO LONGER CONSISTENT WITH THE SIDE ROAD LANE CLOSURE.
- C. ADVANCE WARNING SIGNS ARE TO BE OMITTED ON DRIVEWAY UNLESS OTHERWISE NOTED.
- D. THE TRAFFIC CONTROL AND PROTECTION FOR SIDE ROADS, INTERSECTIONS, AND DRIVEWAYS SHALL BE INCIDENTAL TO THE COST OF SPECIFIED TRAFFIC CONTROL STANDARDS OR ITEMS.

All dimensions are in millimeters (inches) unless otherwise shown.

FILE NAME = W:\distatd\22x34\col18.dgn	USER NAME = geglienobt	DESIGNED - LHA	REVISED - J. OBERLE 10-18-95
		DRAWN -	REVISED - A. HOUSEH 03-06-96
	PLOT SCALE = 50,000' / IN.	CHECKED -	REVISED - A. HOUSEH 10-15-96
	PLOT DATE = 1/4/2008	DATE - 06-89	REVISED - T. RAMMACHER 01-06-00

STATE OF ILLINOIS
DEPARTMENT OF TRANSPORTATION

TRAFFIC CONTROL AND PROTECTION FOR
SIDE ROADS, INTERSECTIONS, AND DRIVEWAYS

SCALE: NONE SHEET NO. 1 OF 1 SHEETS STA. TO STA.

F.A. RTE.	SECTION	COUNTY	TOTAL SHEETS	SHEET NO.
1632	06-00041-00-18	COOK	11	11
TC-10			CONTRACT NO. 63447	
FED. ROAD DIST. NO. 1 ILLINOIS FED. AID PROJECT				