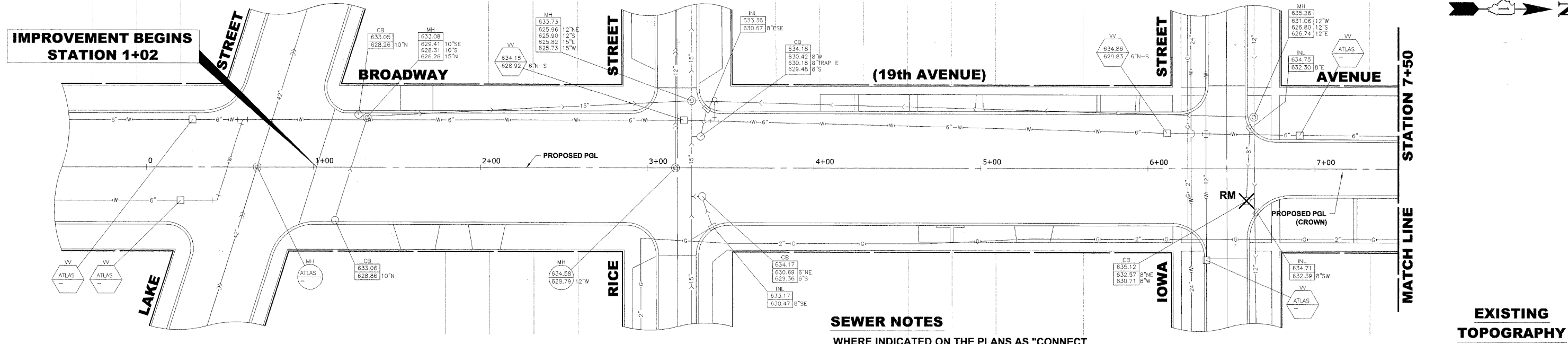
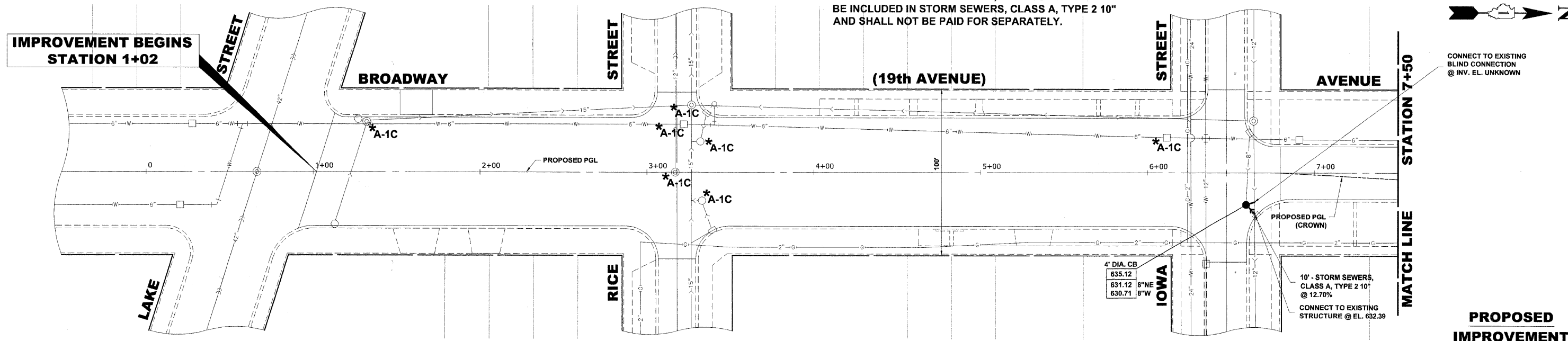


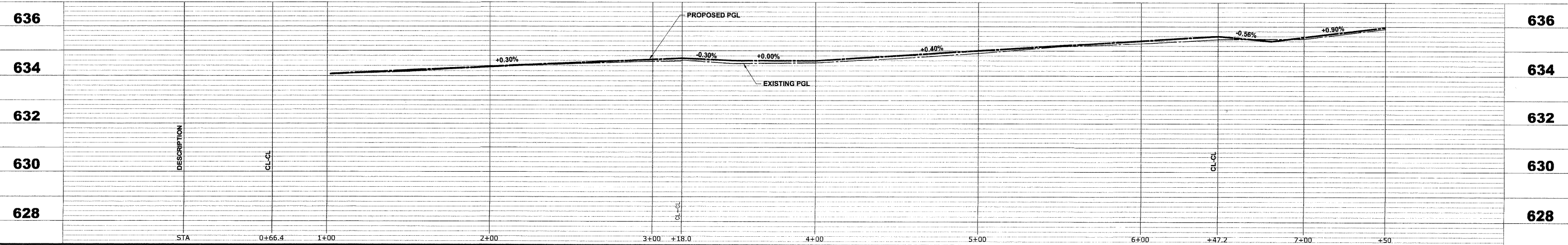
Drawing File: W:\Projects\60009001 - Broadway Ave Reconstruction\BROADWAY AVE\BROADWAY AVE.dwg Apr 20, 2010 - 1:35pm



SEWER NOTES
 WHERE INDICATED ON THE PLANS AS "CONNECT TO EXISTING STRUCTURE" OR "CONNECT TO EXISTING BLIND CONNECTION", THE COST SHALL BE INCLUDED IN STORM SEWERS, CLASS A, TYPE 2 10" AND SHALL NOT BE PAID FOR SEPARATELY.



PROPOSED IMPROVEMENT



HANCOCK ENGINEERING
 Civil Engineers
 Municipal Consultants
 Established 1911

USER NAME -	DESIGNED - WOP	REVISED -
PLOT SCALE -	DRAWN - MK/LEV/DMM	REVISED -
PLOT DATE -	CHECKED - WOP	REVISED -
	DATE - 3-29-10	REVISED -

**STATE OF ILLINOIS
 DEPARTMENT OF TRANSPORTATION**

**BROADWAY AVENUE (19th AVENUE)
 DRAINAGE AND UTILITIES PLAN AND PROFILE**
 SCALE: 1"=30'H. & 1"=2'V. SHEET NO. 1 OF 4 SHEETS STA. 1+02 TO STA. 7+50

ROUTE NO.	SECTION	COUNTY	TOTAL SHEETS	SHEET NO.
2406	09-00114-00-FP	COOK	33	16
FIELD BOOK NO. 1588/AERIALS/LL		CONTRACT NO. 63455		

E.H.E. PROJECT NO. 600-09-00101