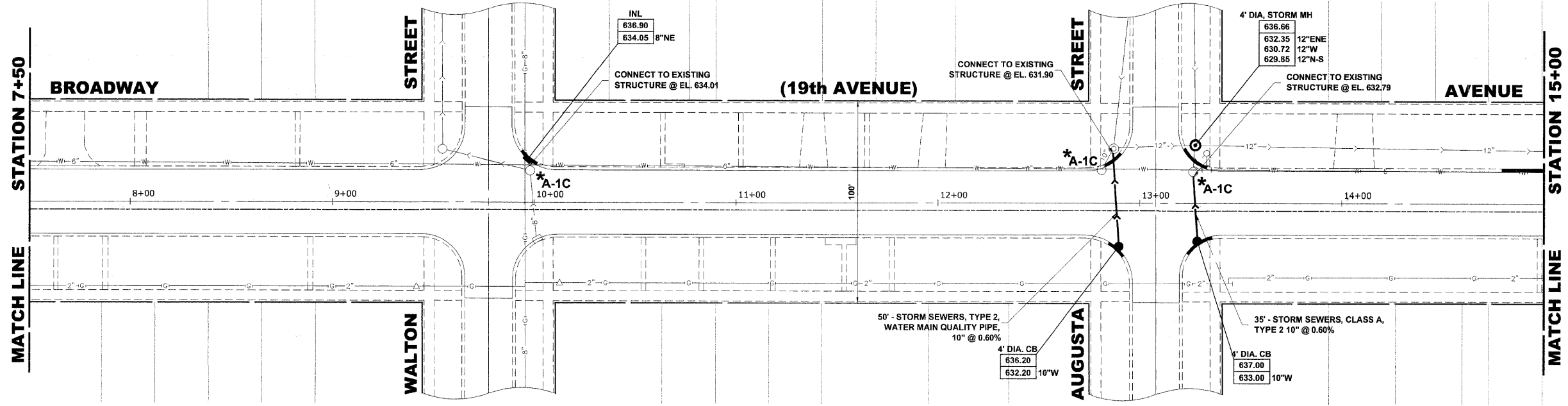
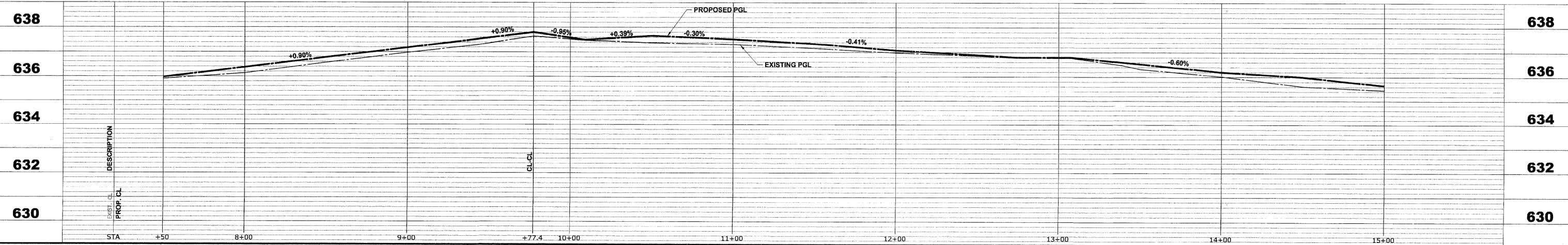


**SEWER NOTES**  
 WHERE INDICATED ON THE PLANS AS "CONNECT TO EXISTING STRUCTURE" OR "CONNECT TO EXISTING BLIND CONNECTION", THE COST SHALL BE INCLUDED IN STORM SEWERS, CLASS A, TYPE 2 10" AND SHALL NOT BE PAID FOR SEPARATELY.

**EXISTING TOPOGRAPHY**



**PROPOSED IMPROVEMENT**



Drawing file: W:\Projects\60009001 - Broadway Ave Reconstruction\BROADWAY AVE\BROADWAY AVE.dwg Apr 19, 2010 - 11:24am

**HANCOCK ENGINEERING**  
 Civil Engineers  
 Municipal Consultants  
 Established 1911

USER NAME -	DESIGNED - WOP	REVISED -
PLOT SCALE -	DRAWN - MK/LEV/DMM	REVISED -
PLOT DATE -	CHECKED - WOP	REVISED -
	DATE - 3-29-10	REVISED -

**STATE OF ILLINOIS  
 DEPARTMENT OF TRANSPORTATION**

**BROADWAY AVENUE (19th AVENUE)  
 DRAINAGE AND UTILITIES PLAN AND PROFILE**

SCALE: 1"=30'H. & 1"=2'V. SHEET NO. 2 OF 4 SHEETS STA. 7+50 TO STA. 15+00

ROUTE NO. 2406	SECTION 09-00114-00-FP	COUNTY COOK	TOTAL SHEETS 33	SHEET NO. 17
FIELD BOOK NO. 1588/AERIALS/LL		CONTRACT NO. 63455		
FED. ROAD DIST. NO. 1 ILLINOIS FED. AID PROJECT ARA-M-9003 (516)				
E.H.E. PROJECT NO. 600-09-00101				