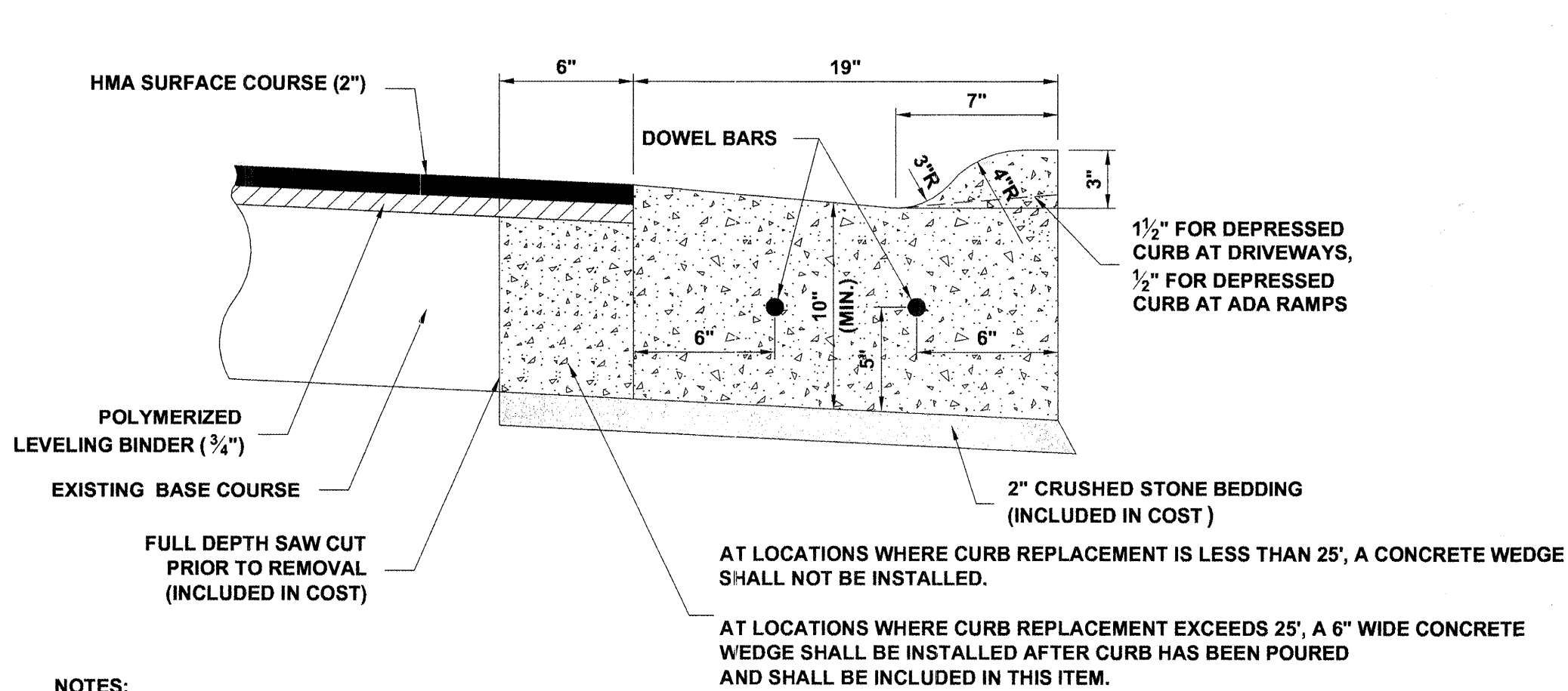


NOTES:

1. PROVIDE 2 - 3/4" DIAMETER, 18" LONG EPOXY COATED SMOOTH BARS WITH PLASTIC EXPANSION CAPS AT EACH EXPANSION JOINT.
2. CONTRACTION JOINT - 2" DEEP CONTRACTION JOINTS SHALL BE SAWED AT EQUAL SPACES (NOT EXCEEDING 15 FEET) BETWEEN NORMAL EXPANSION JOINTS, IN THE UPPER 1/3 OF CURB & GUTTERS WITHIN 24 HOURS OF PLACEMENT.
3. A LEAN CONCRETE WEDGE IS TO BE POURED IN THE SPACE BETWEEN THE NEW CURB & THE EXISTING PAVEMENT AFTER THE CURB HAS REACHED ITS INITIAL SET.

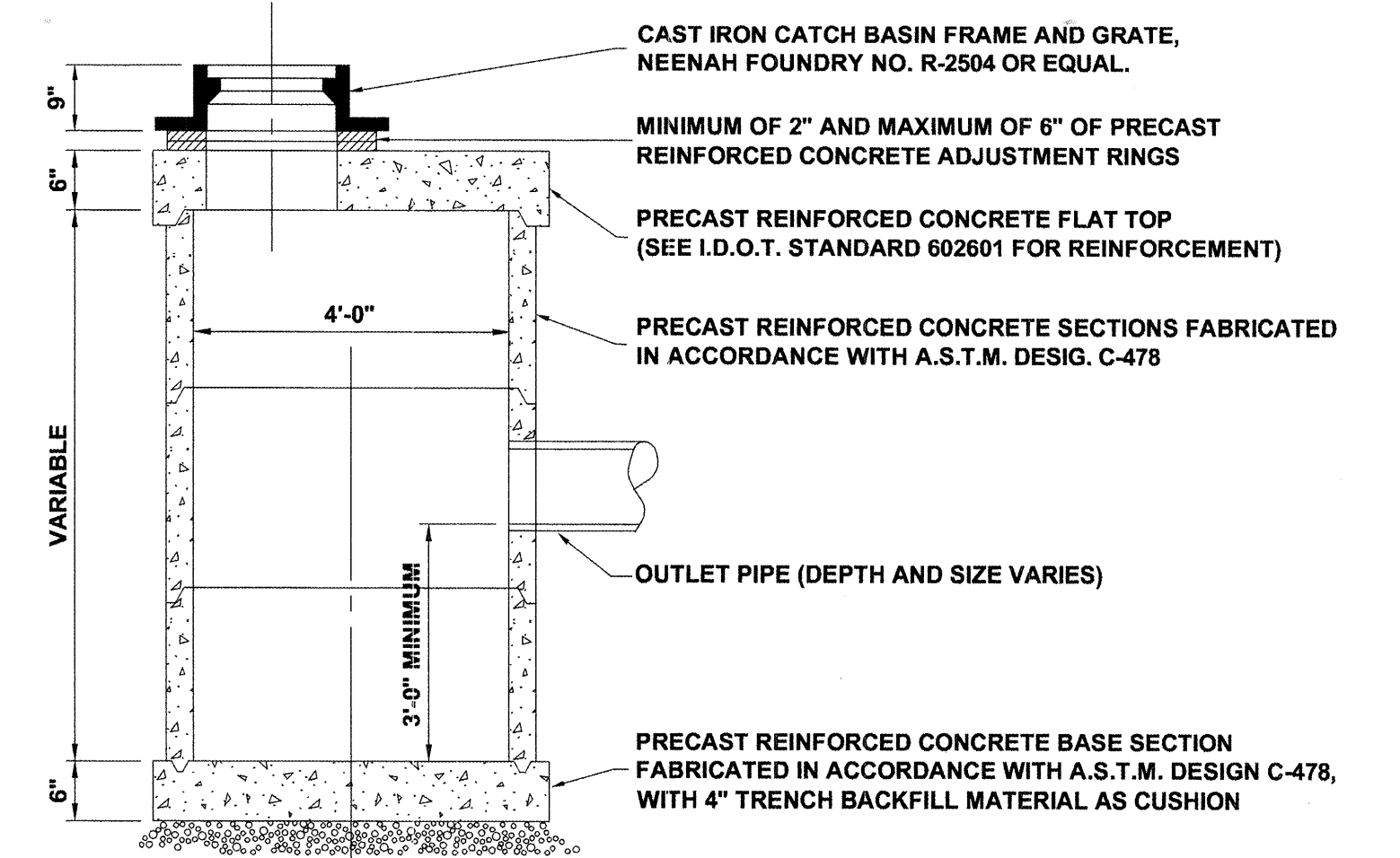
**COMBINATION CONCRETE CURB AND GUTTER
REMOVAL AND REPLACEMENT (EAST SIDE)**



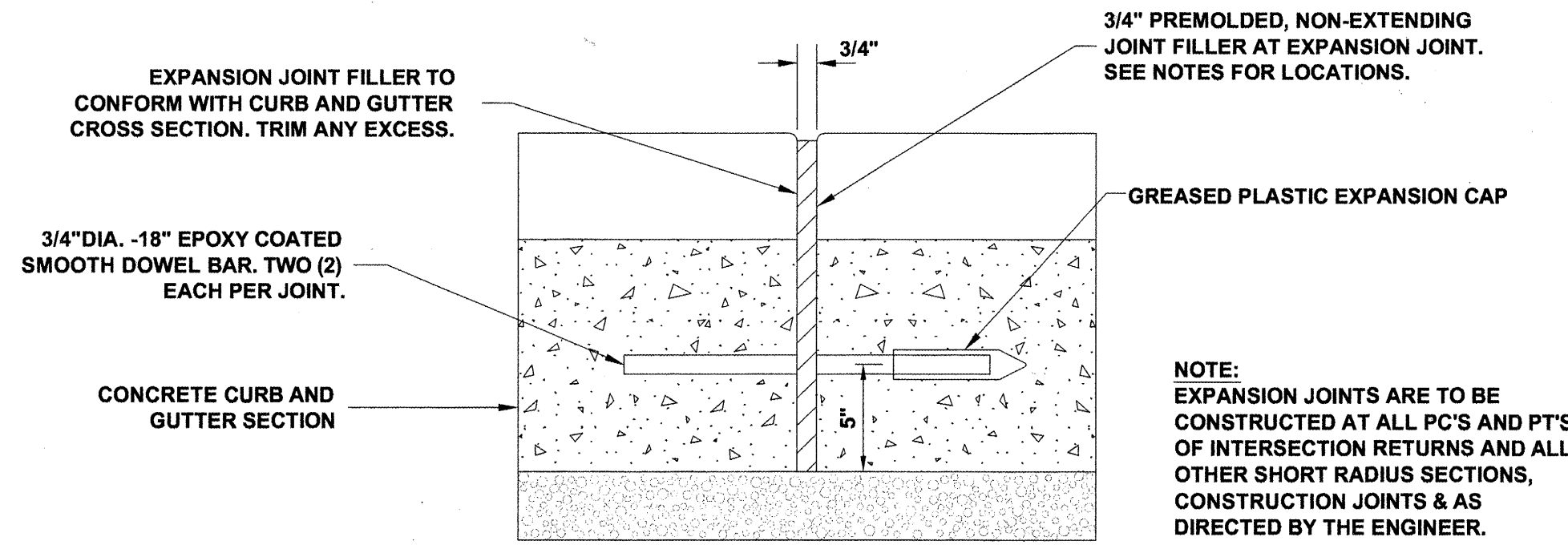
NOTES:

1. PROVIDE 2 - 3/4" DIAMETER, 18" LONG EPOXY COATED SMOOTH BARS WITH PLASTIC EXPANSION CAPS AT EACH EXPANSION JOINT.
2. CONTRACTION JOINT - 2" DEEP CONTRACTION JOINTS SHALL BE SAWED AT EQUAL SPACES (NOT EXCEEDING 15 FEET) BETWEEN NORMAL EXPANSION JOINTS, IN THE UPPER 1/3 OF CURB & GUTTERS WITHIN 24 HOURS OF PLACEMENT.
3. A LEAN CONCRETE WEDGE IS TO BE POURED IN THE SPACE BETWEEN THE NEW CURB & THE EXISTING PAVEMENT AFTER THE CURB HAS REACHED ITS INITIAL SET.

**COMBINATION CONCRETE CURB AND GUTTER
REMOVAL AND REPLACEMENT (WEST SIDE)**

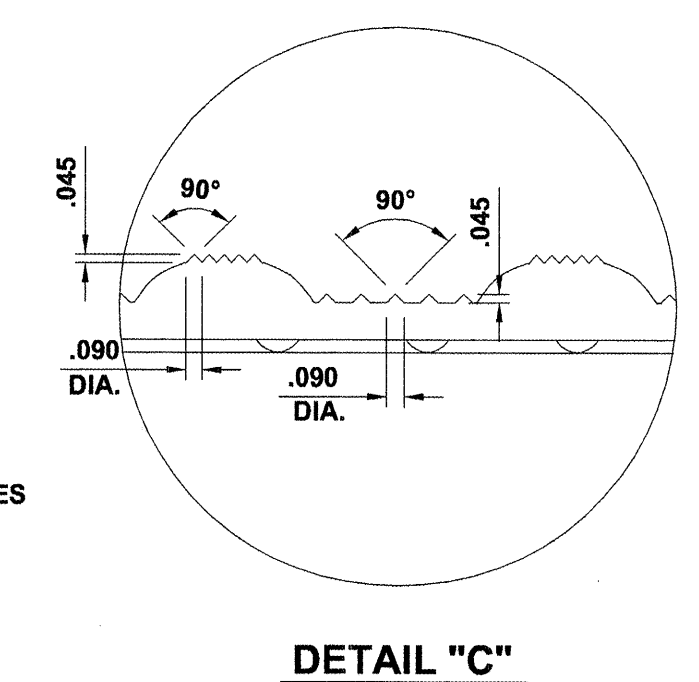
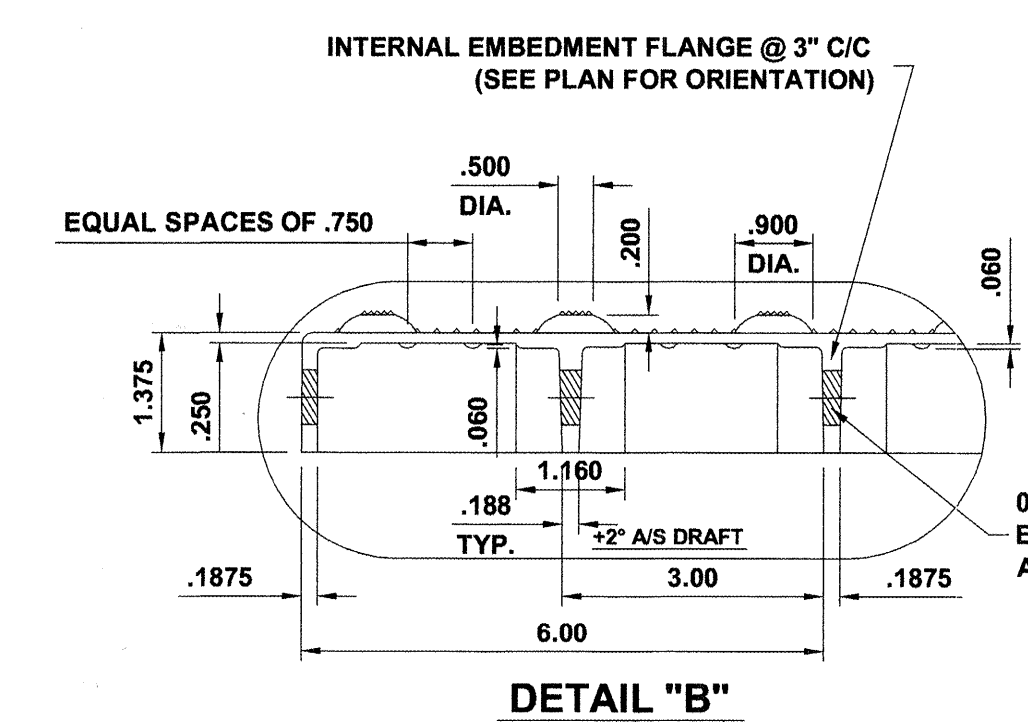
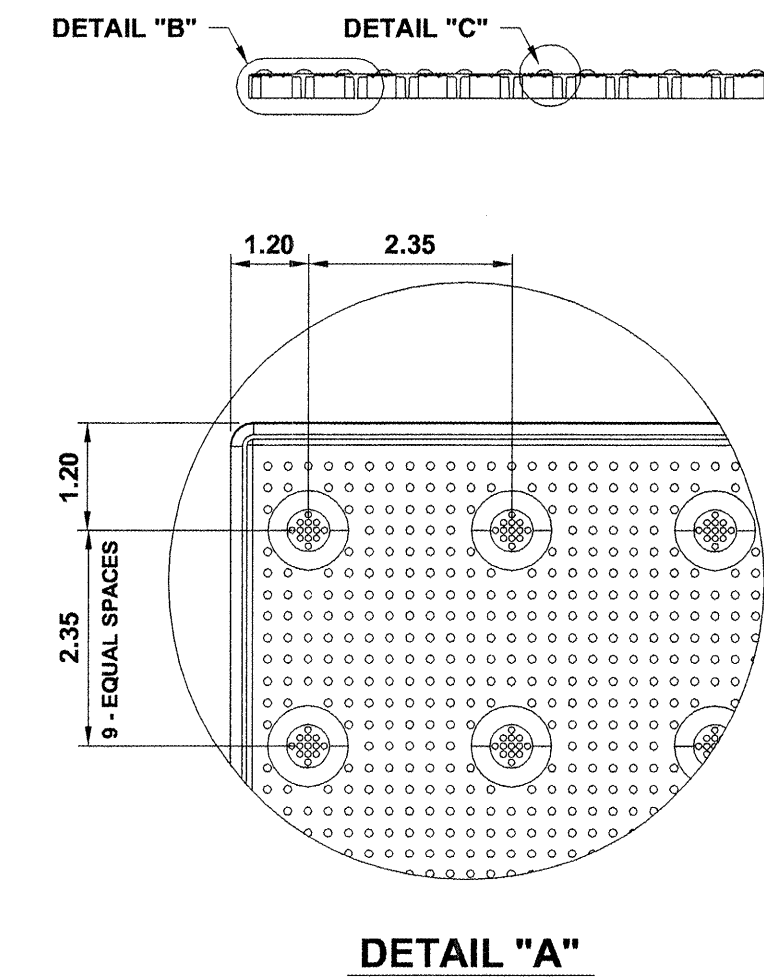
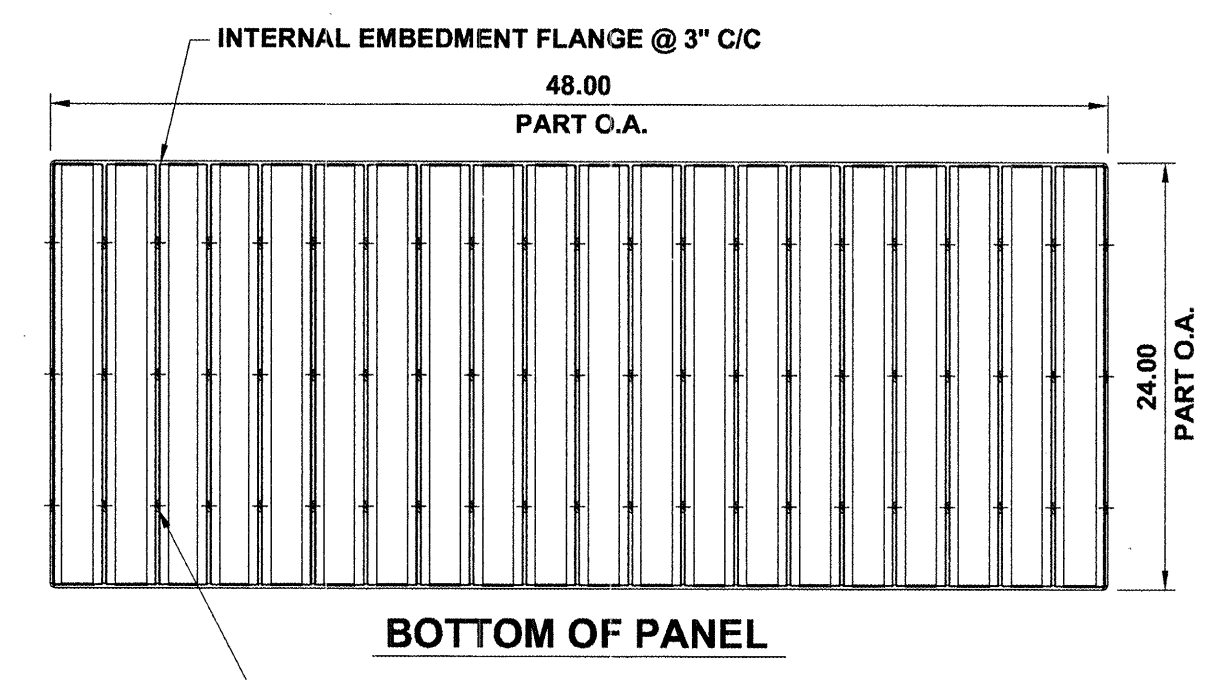
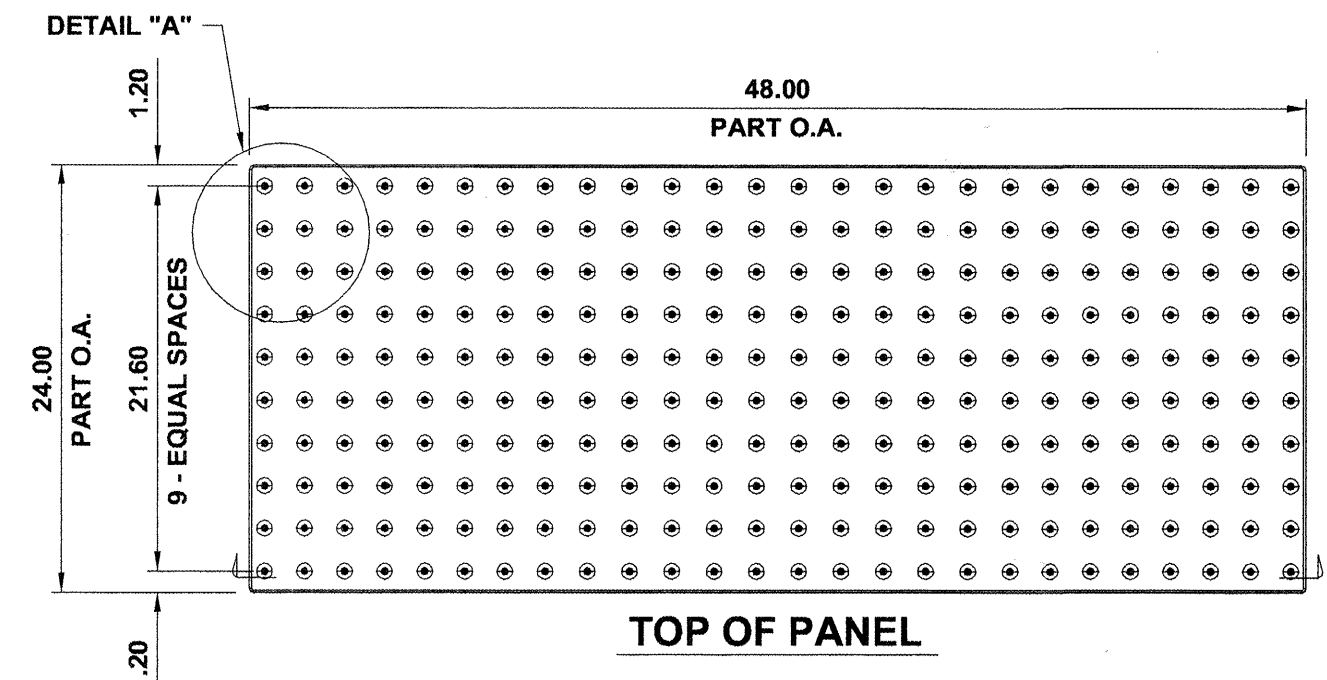


RESTRICTED DEPTH CATCH BASIN



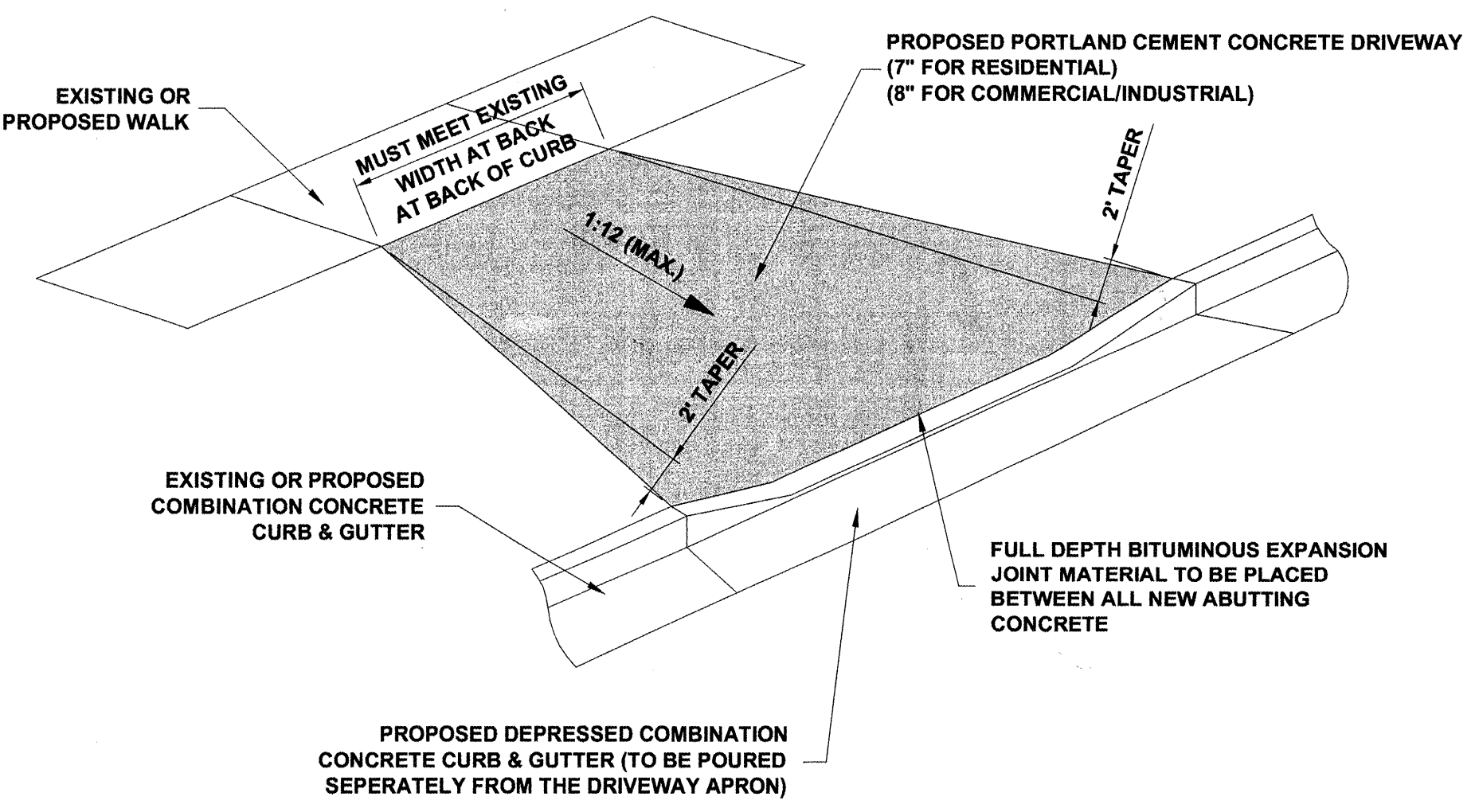
**TYPICAL CURB AND GUTTER
EXPANSION JOINT**

NOTE:
EXPANSION JOINTS ARE TO BE
CONSTRUCTED AT ALL PC'S AND PT'S
OF INTERSECTION RETURNS AND ALL
OTHER SHORT RADIUS SECTIONS,
CONSTRUCTION JOINTS & AS
DIRECTED BY THE ENGINEER.

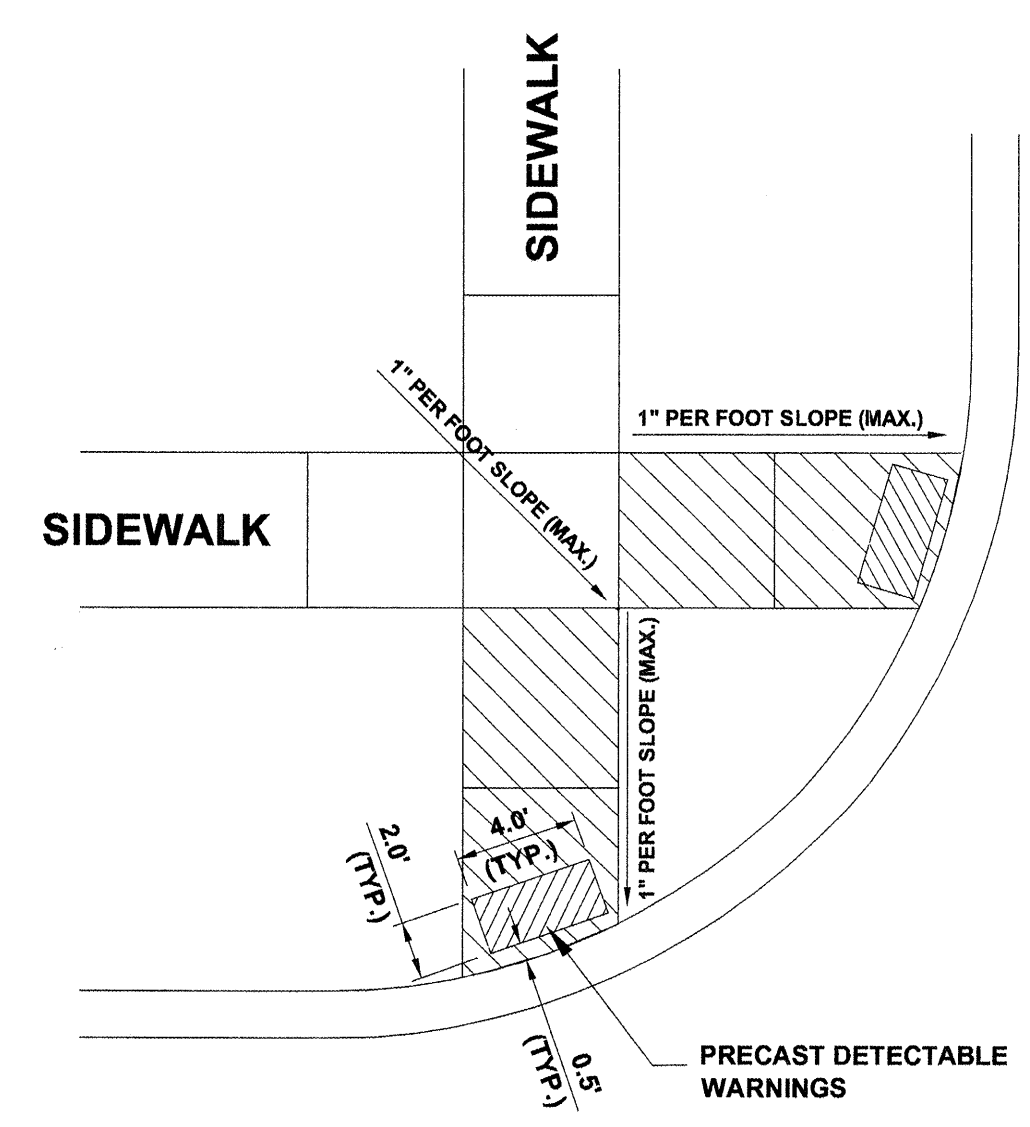


**CAST-IN-PLACE COMPOSITE PAVER TILE
FOR DETECTABLE WARNING**

NOTE:
COMPOSITE PAVER TILE USED
SHALL BE AS MANUFACTURED
BY ADA SOLUTIONS, INC., OR
AS APPROVED BY ENGINEER.



DRIVEWAY



A.D.A. RAMP

**STATE OF ILLINOIS
DEPARTMENT OF TRANSPORTATION**

DETAILS



USER NAME --	DESIGNED -- TG	REVISED --
PLOT SCALE --	DRAWN -- TG	REVISED --
PLOT DATE --	CHECKED -- DT	REVISED --
	DATE -- 03/26/10	REVISED --

SCALE: NONE SHEET NO. 1 OF 1 SHEETS STA. TO STA.

F.A.U. RTE.	SECTION	COUNTY	TOTAL SHEETS	SHEET NO.
1005	09-00075-00-RS	COOK	11	7
CONTRACT NO. 63458			FED. ROAD DIST. NO. 1 ILLINOIS FED. AID PROJECT M-9003(578)	

Drawing file: W:\Projects\83809245 - Gardner Rd Resurf (APP) Detail-GardnerRd.dwg Mar 29, 2010 - 3:03pm