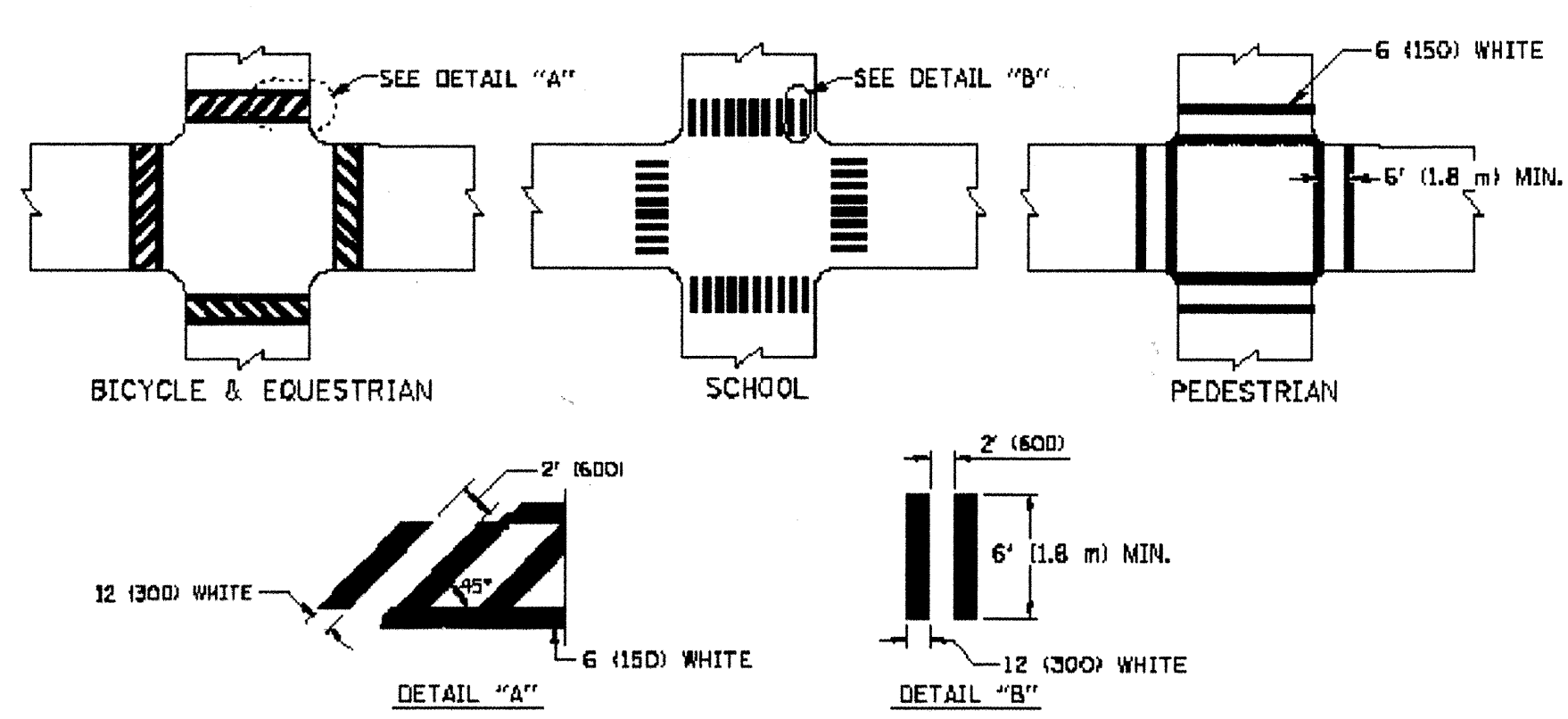
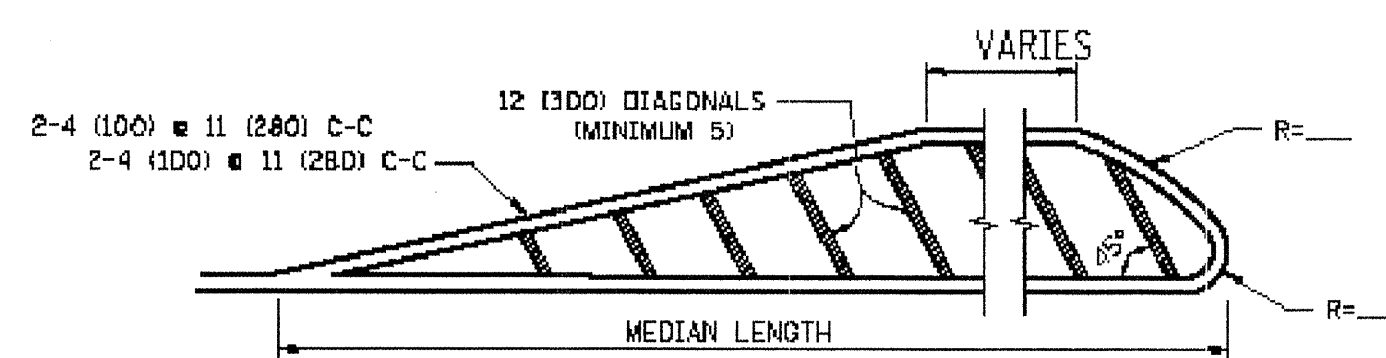
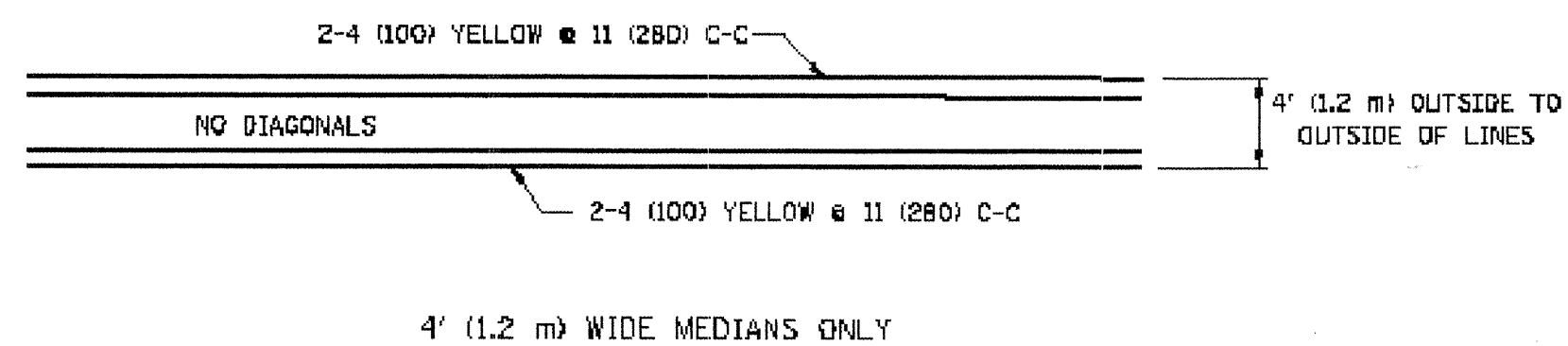


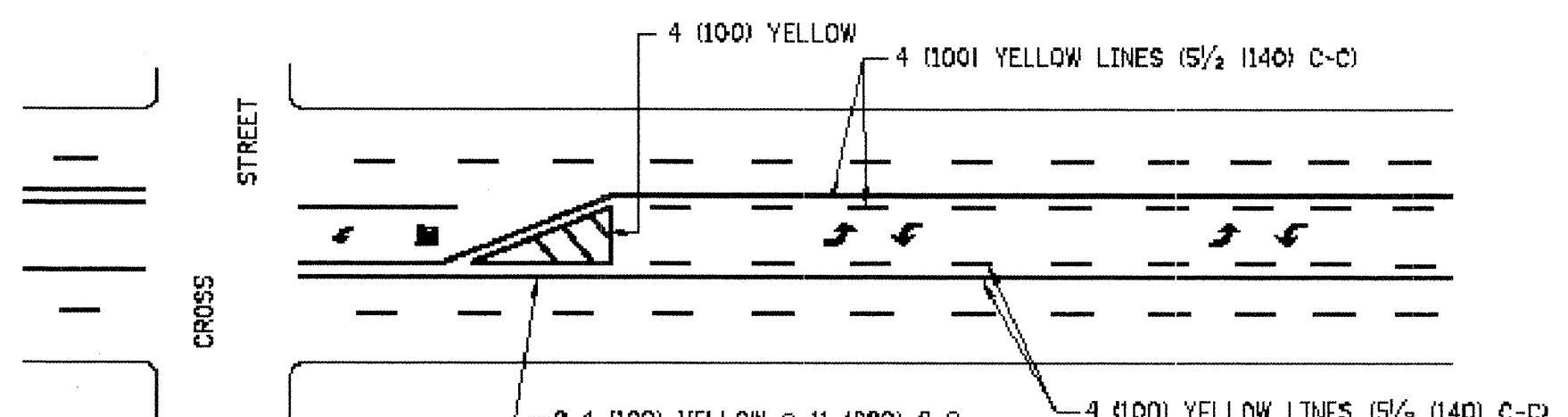
TYPICAL LANE AND EDGE LINE MARKING



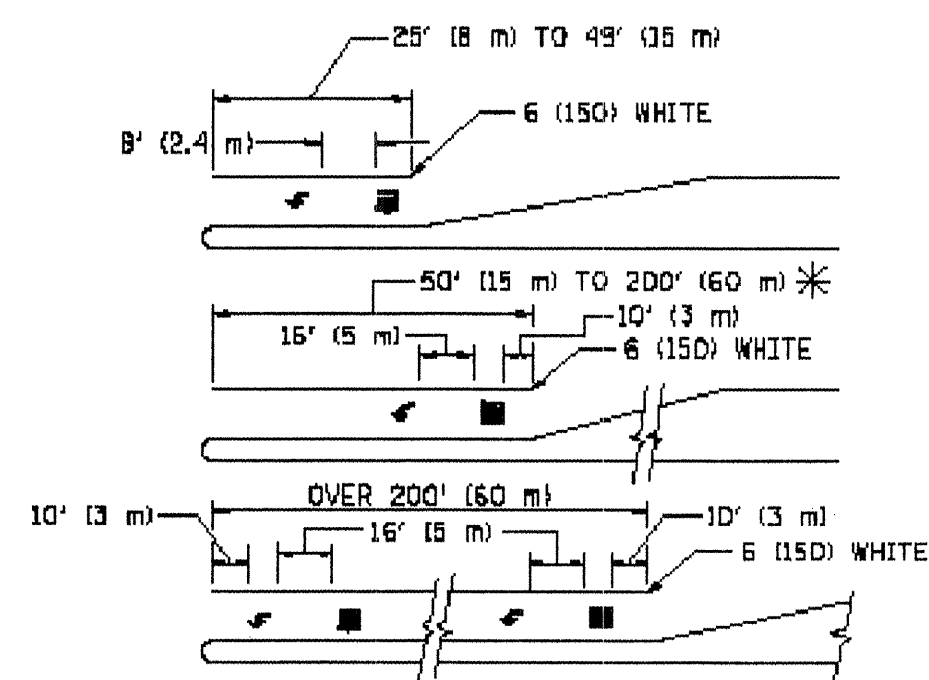
TYPICAL CROSSWALK MARKING



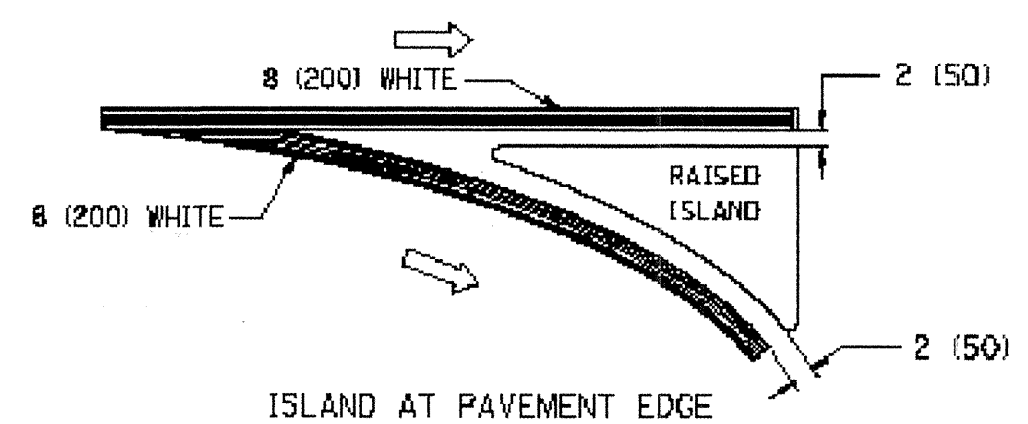
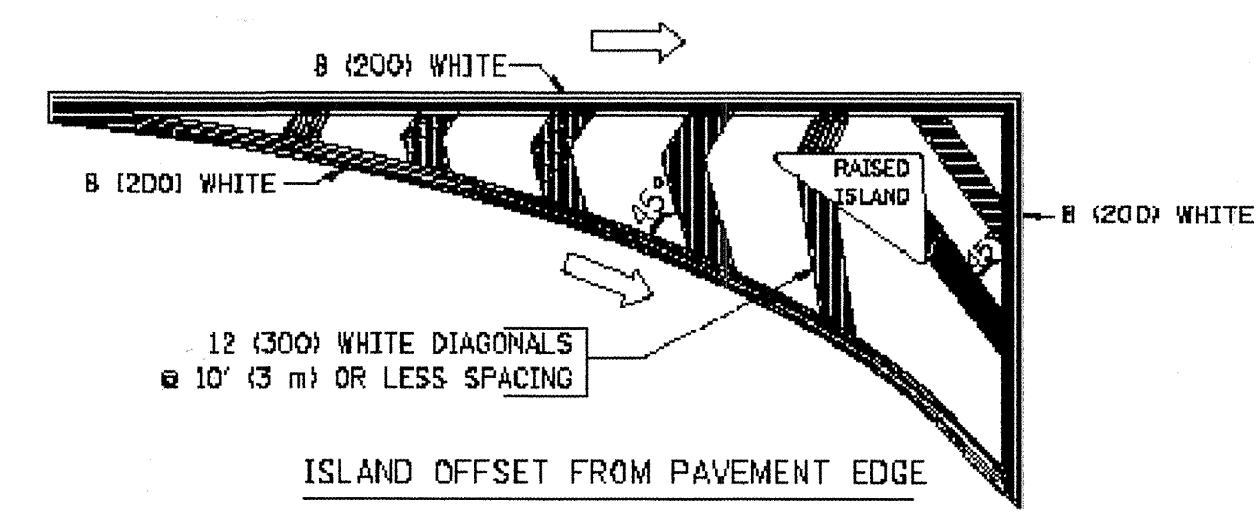
MEDIANS OVER 4' (1.2 m) WIDE



TYPICAL PAINTED MEDIAN MARKING



TYPICAL TURN LANE MARKING



TYPICAL ISLAND MARKING

Table with 5 columns: TYPE OF MARKING, WIDTH OF LINE, PATTERN, COLOR, and SPACING / REMARKS. It lists various marking types such as centerlines, lane lines, edge lines, and stop lines with their corresponding specifications.

FOR FURTHER DETAILS ON PAVEMENT MARKING REFER TO STANDARD SPECIFICATIONS FOR ROAD AND BRIDGE CONSTRUCTION AND STATE STANDARD 7800D1.

All dimensions are in inches (millimeters) unless otherwise shown.

Drawing file: W:\Projects\63809245 - Gardner Rd Resurf (LAPP)\Markings-CorcherRd.dwg Mar 29, 2010 - 3:07pm

Metadata table containing file name, user name, designed, revised, drawn, checked, and plot date information.

STATE OF ILLINOIS DEPARTMENT OF TRANSPORTATION

District One Typical Pavement Markings table containing scale, sheet number, and stationing information.

F.A.U. R.T.E. table containing section, county, total sheets, and sheet number information.

E.H.E. PROJECT NO. 838-09-24501