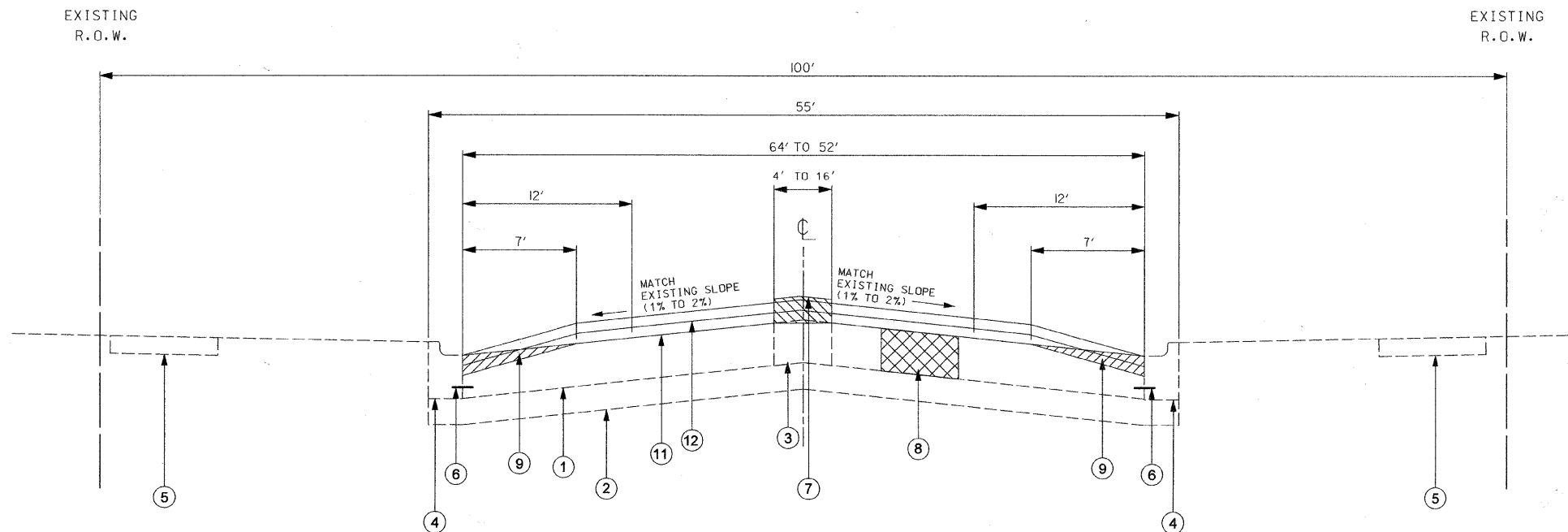


F.A.U. RTE	SECTION	COUNTY	TOTAL SHEETS	SHEET NO.
2794	09-00104-00-RS	COOK	14	4
STA.		TO STA.		
FED. ROAD DIST. NO.	ILLINOIS	FED. AID PROJECT		
CONTRACT NUMBER: 63459				



**LEGEND**

- ① EXISTING PCC PAVEMENT (10")
- ② EXISTING BASE
- ③ EXISTING P.C.C. MEDIAN
- ④ EXISTING COMBINATION CONCRETE CURB & GUTTER, TYPE B-6.12
- ⑤ EXISTING CONCRETE SIDEWALK (THICKNESS VARIES 5", 6", OR 8")
- ⑥ EXISTING TIE BAR TO REMAIN IN PLACE (SEE SPECIAL PROVISIONS)
- ⑦ PROPOSED MEDIAN REMOVAL PARTIAL DEPTH
- ⑧ CLASS D PATCHES, 10"
- ⑨ PROPOSED PORTLAND CEMENT CONCRETE SURFACE REMOVAL (COLD MILLING) VARIABLE DEPTH (0" - 2-1/4") (TYP.)
- ⑩ NOT USED
- ⑪ PROPOSED POLYMERIZED LEVELING BINDER (MACHINE METHOD), IL-4.75, N50 (1")
- ⑫ PROPOSED HOT MIX ASPHALT SURFACE COURSE, MIX D, N70 (1-1/2")

**EXISTING & PROPOSED TYPICAL SECTION  
STA 11+59 TO STA 35+05, CENTRAL AVENUE**

**CONTRACTOR SHALL MILL BEFORE PATCHING**

HMA MIXTURE REQUIREMENTS	
MXTURE TYPE	AIR VOIDS @ Ndes
<b>PAVEMENT RESURFACING</b>	
HOT-MIX ASPHALT SURFACE COURSE, MIX "D", N70 (IL 9.5mm); 1-1/2"	4% @ 70 GYR
POLYMERIZED LEVELING BINDER (MACHINE METHOD), IL-4.75, N50; 1"	4% @ 50 GYR
<b>Patching</b>	
CLASS D PATCHES, (HMA BINDER IL-19mm) 10"	4% @ 70 GYR
<b>Driveway</b>	
HOT-MIX ASPHALT SURFACE COURSE, MIX "C", N50 (IL 9.5 mm)	4% @ 50 GYR
DRIVEWAY APPROACH REMOVAL & REPLACEMENT	4% @ 50 GYR

THE UNIT WEIGHT USED TO CALCULATE ALL HOT-MIX ASPHALT SURFACE MIXTURE QUANTITIES IS 112 LBS/SQ YD/IN

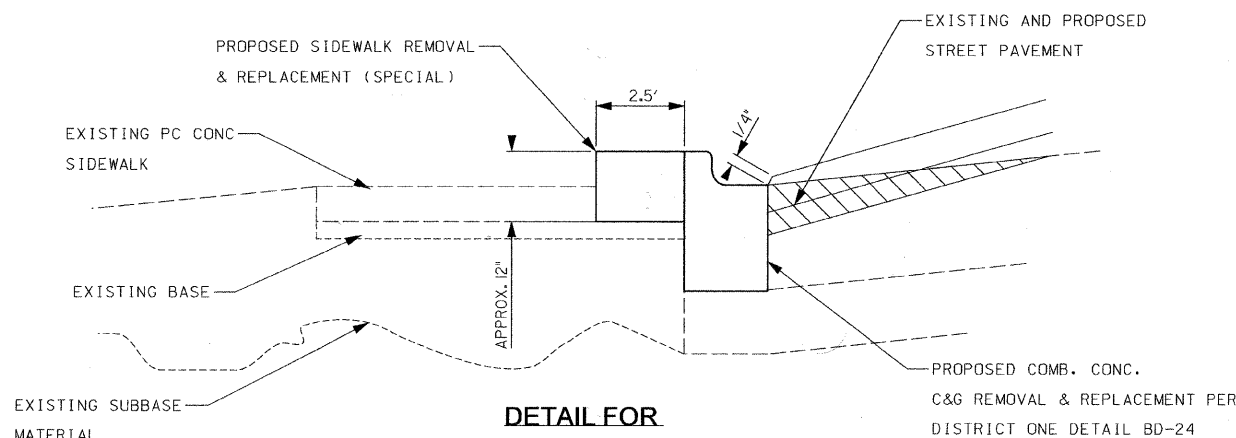
THE "AC TYPE" FOR POLYMERIZED HMA MIXES SHALL BE "SBS/SBR PG 70-22" AND FOR NON-POLYMERIZED HMA THE "AC TYPE" SHALL BE "PG 64-22" UNLESS MODIFIED BY DISTRICT ONE SPECIAL PROVISIONS.

FOR "PERCENT OF RAP" SEE DISTRICT ONE SPECIAL PROVISIONS

**NOTE:**

1. INTENDED DRIVEWAY WORK INCLUDES REPAIR OF EXISTING RESIDENTIAL DRIVEWAYS WITHIN THE RIGHT-OF-WAY TO MATCH GRADES TO AND/OR REPAIR DAMAGE ASSOCIATED WITH INTERMITTENT CURB AND GUTTER REMOVAL AND REPLACEMENT AS DIRECTED BY THE ENGINEER IN THE FIELD.

**CONSTRUCTION DETAILS**



**DETAIL FOR  
SIDEWALK REMOVAL & REPLACEMENT (SPECIAL)  
STA 27+00, LT. TO STA. 35+05, LT.**

DATE  
FILE NAME  
PLOT SCALE  
USER NAME

REVISIONS	
NAME	DATE

ILLINOIS DEPARTMENT OF TRANSPORTATION  
**VILLAGE OF MORTON GROVE**  
F.A.U. 2794 (CENTRAL AVENUE)  
EXISTING & PROPOSED  
TYPICAL CROSS SECTIONS &  
CONSTRUCTION DETAILS  
SCALE: VERT. NTS  
HORIZ. NTS  
DATE: 3/11/10  
DRAWN BY: JFG  
CHECKED BY: CRT