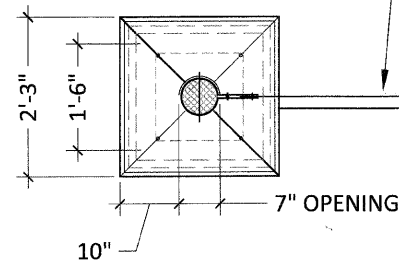
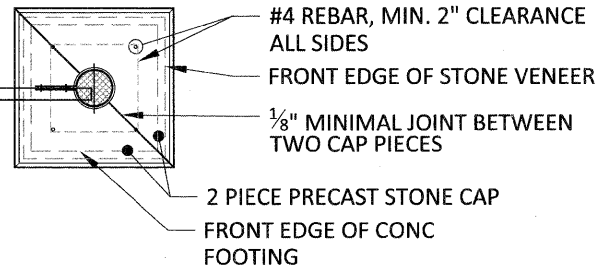


NOTE: FIELD VERIFY MINIMUM 2,500 PSF ALLOWABLE SOIL BEARING PRESSURE PRIOR TO CONSTRUCTION



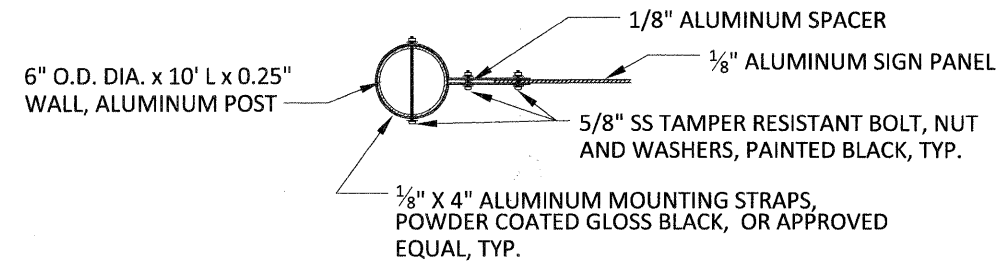
1/8" ALUMINUM PANEL, FRONT TO BE POWDER COATED WHITE, BACK TO BE POWDER COATED GLOSS BLACK, FRONT TO HAVE VINYL GRAPHIC PANEL APPLIED

BACK  
FRONT

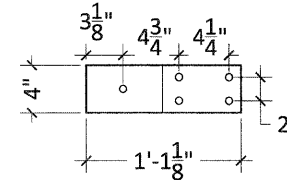


SIGNAGE LIGHTING, MINIRAY FIXTURE, MODEL: M12A-G-HFL-T39MH-120-BRP-LG, BY GUARDCO OR APPROVED EQUAL. INSTALLED PER MANUFACTURER'S RECOMMENDATIONS, TO BE INCLUDED IN THE LUMP SUM PRICE FOR THE KIOSK AND INFORMATION SIGNS

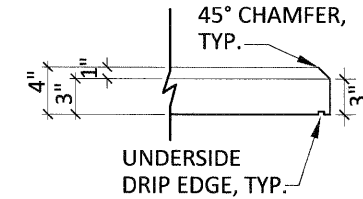
PLAN VIEW



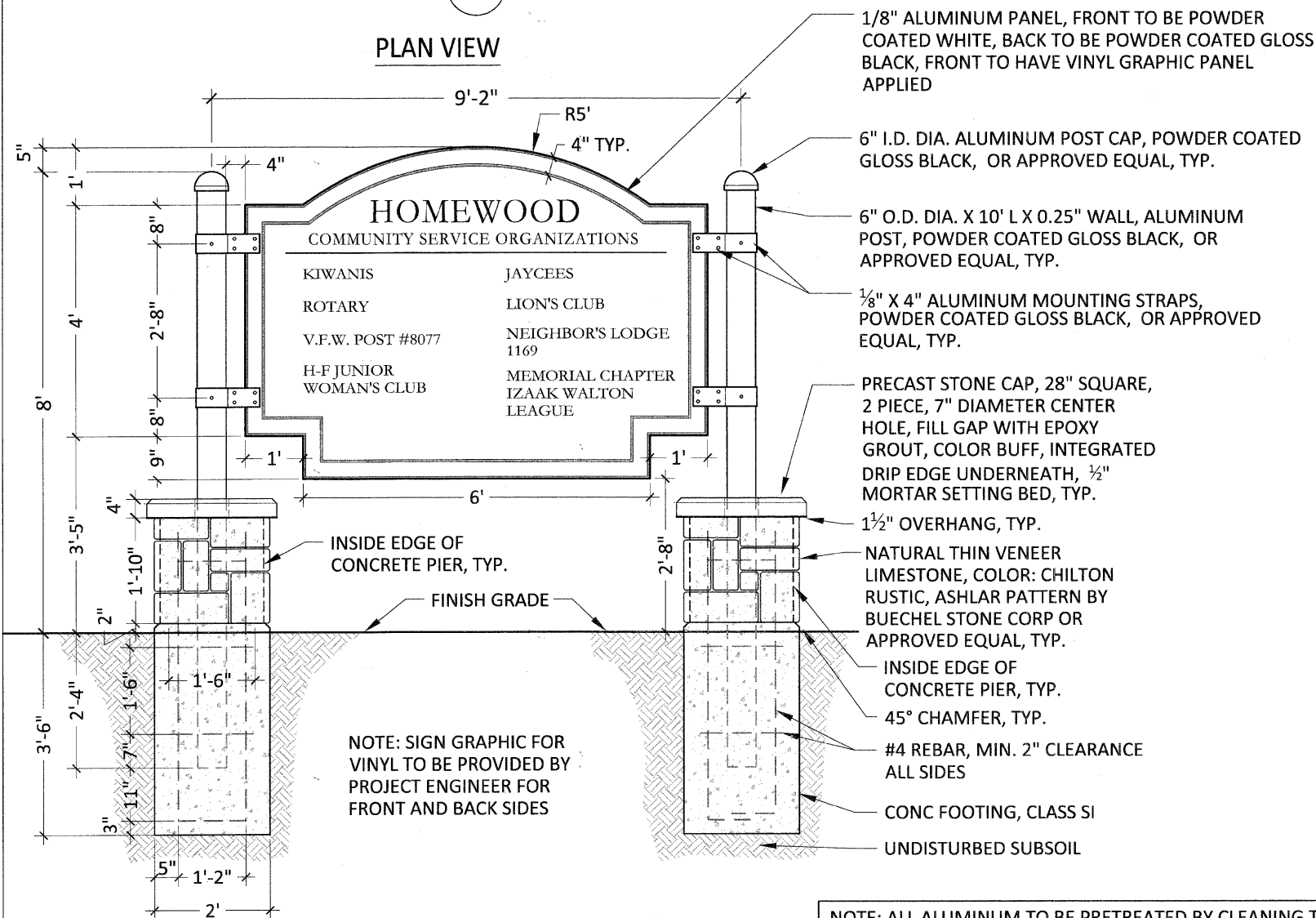
BRACKET DETAIL/SIGN MOUNTING, PLAN VIEW



BRACKET DETAIL



COPING EDGE DETAIL

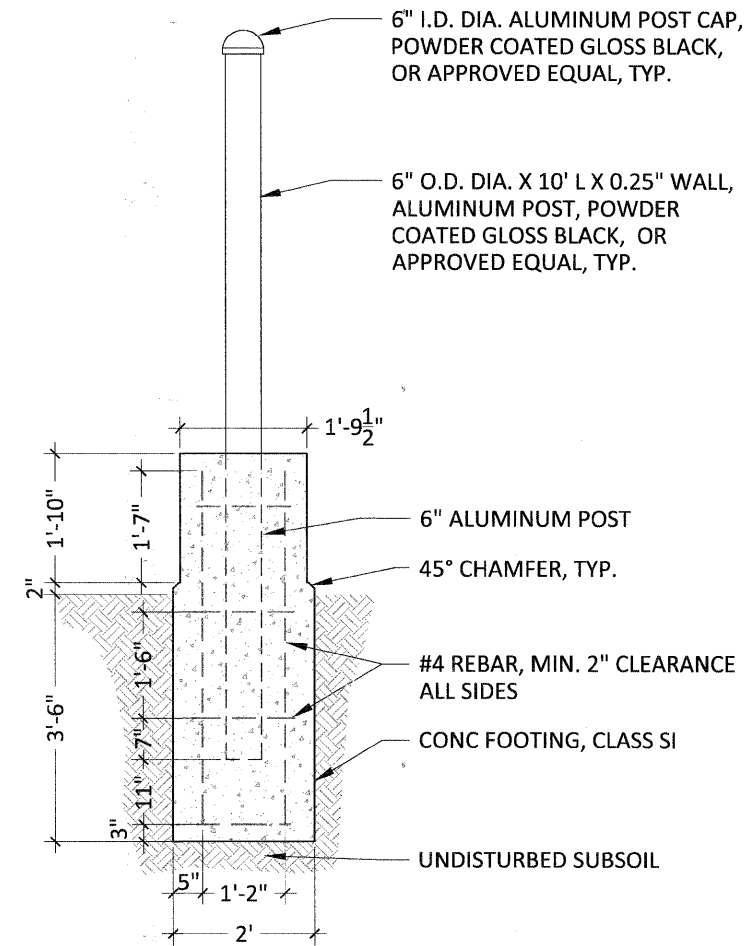


FRONT ELEVATION - TYPE A

NOTE: SIGN GRAPHIC FOR VINYL TO BE PROVIDED BY PROJECT ENGINEER FOR FRONT AND BACK SIDES

NOTE: ALL ALUMINUM TO BE PRETREATED BY CLEANING THE SURFACE, PRIMED WITH A PHOSPHATE COATING, POWDER COATED, POWDER COATED, AND CURED. SEE SPECIAL PROVISIONS FOR ADDITIONAL INFORMATION. ANY ALUMINUM TO BE IN DIRECT CONTACT WITH CONCRETE TO BE COATED WITH TWO THIN COATS OF AN ASPHALTIC PAINT.

REBAR BILL OF MATERIALS		
QTY	SIZE	LENGTH
8	#4	60"
32	#4	16"



CONCRETE FOOTING DETAIL

1 KIOSK AND INFORMATION SIGNS

NOT TO SCALE