

1. EXPANSION JOINTS AT TANGENT POINTS AND 150 FOOT INTERVALS, CONSISTING OF ONE INCH PREMOLDED JOINT FILLER MATERIAL WITH #8 DOWEL BARS, 18" IN LENGTH, GREASED, PROVIDE EXPANSION CAP ON ONE END. ALSO CONSTRUCT THIS JOINT TEN FEET EACH SIDE OF PROPOSED UNDERGROUND STRUCTURE.
2. CONTRACTION JOINTS AT TWENTY-FIVE FOOT INTERVALS AND AT THE CENTER OF RETURNS.
3. ALL RADII SHALL BE 25 FEET TO THE BACK OF CURB UNLESS OTHERWISE DIRECTED BY THE ENGINEER.
4. LONGITUDINAL EXPANSION JOINT CONSISTING OF ONE INCH PREMOLDED JOINT FILLER.
5. DEPRESS CURB AT LOCATIONS WHERE PUBLIC WALKS INTERSECT CURB LINE AT STREET INTERSECTIONS, ALLEYS, AND OTHER LOCATIONS AS DIRECTED, FOR THE CONSTRUCTION OF RAMPED SIDEWALKS FOR ACCESS BY THE HANDICAPPED.

**JOINT DETAILS**

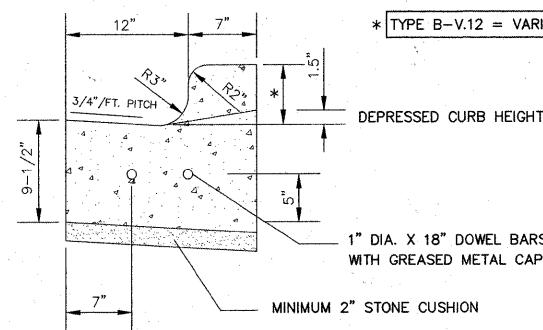
**NOTES:**

1" PREFORMED EXPANSION MOLDING SHALL BE PLACED WITH TWO SMOOTH 1" DIA. DOWEL BARS WITH GREASED CAPS AT ALL POINTS OF CURVATURE AND CORNERS.

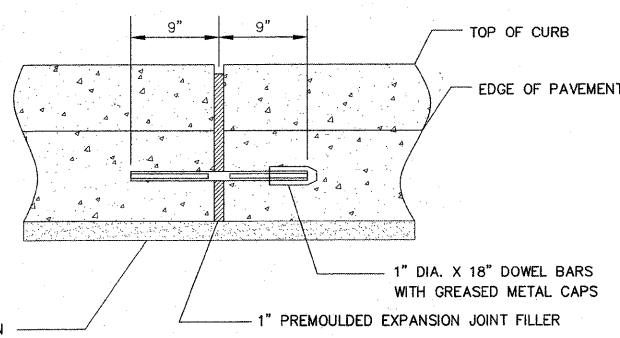
CONTRACTION JOINTS SHALL BE SAW CUT OR TOOLED TO A DEPTH OF 2" @ 15' MINIMUM SPACING. SAW CUT CONTRACTION JOINTS SHALL BE DONE WITHIN 24 HR.. ALL CONTRACTION JOINTS SHALL BE SEALED WITH AN IDOT APPROVED JOINT SEALANT.

AN IDOT APPROVED CURING COMPOUND SHALL BE USED ON ALL PROPOSED CONCRETE CURB AND GUTTER.

3/4" TIE ANCHOR BARS SHALL BE INSTALLED WHERE CURB AND GUTTER IS PLACED AGAINST RIGID BASE MATERIALS AND IN THE ENDS OF EXISTING CURB AND GUTTER TO TIE THE NEW CURB TO THE EXISTING. TIE ANCHOR BARS WILL BE PAID FOR SEPARATELY.

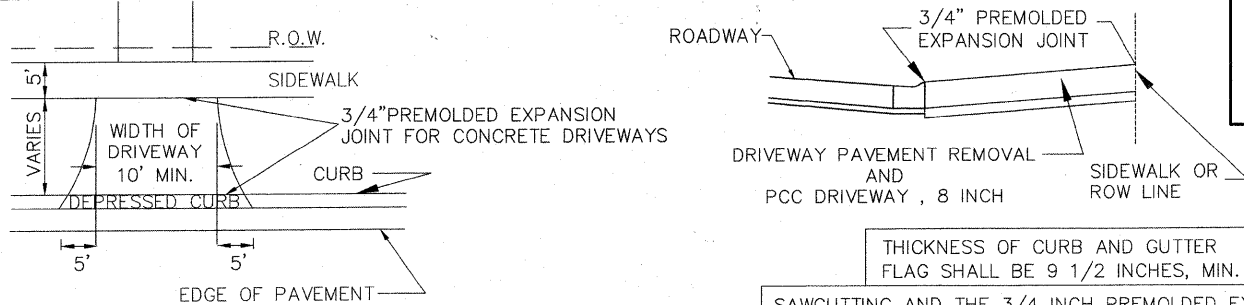


\* TYPE B-V.12 = VARIABLE HEIGHT CURB VARIES FROM 4" TO 6"



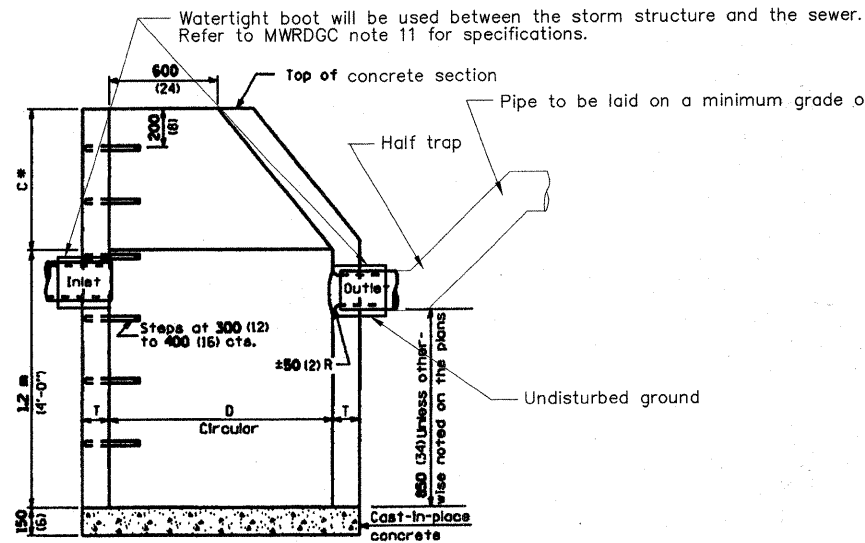
**EXPANSION JOINT DETAIL**

**COMBINATION CONCRETE CURB AND GUTTER, TYPE B-V.12**



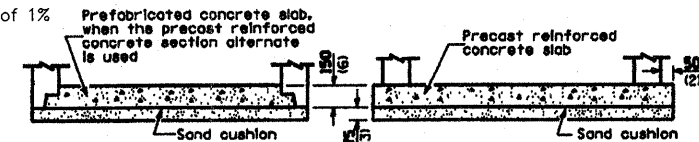
**TYPICAL DRIVEWAY DETAIL**

THICKNESS OF CURB AND GUTTER FLAG SHALL BE 9 1/2 INCHES, MIN.  
SAWCUTTING AND THE 3/4 INCH PREMOLDED EXPANSION JOINT WILL NOT BE PAID SEPARATELY BUT SHALL BE CONSIDERED INCLUDED IN THE COST OF PCC DRIVEWAY PAVEMENT, 8 INCH



**ELEVATION**

NOTE: CATCH BASIN, TYPE C, SPECIAL SHALL BE 2'-0" IN DIAMETER WITH A 15" SUMP



**ALTERNATE BOTTOM SLAB**

ALTERNATE MATERIALS FOR WALLS	D	C	T (min.)
Precast Reinforced Concrete Section	1.2 m (4'-0") 1.5 m (5'-0")	750 (30) 1,125 (45)	100 (4) 125 (5)
Cast-in-place Concrete	1.2 m (4'-0") 1.5 m (5'-0")	750 (30) 1,125 (45)	100 (4) 125 (5)

**GENERAL NOTES**

All catch basins shall be 1.2m (4'-0") in diameter unless otherwise noted on the plans.

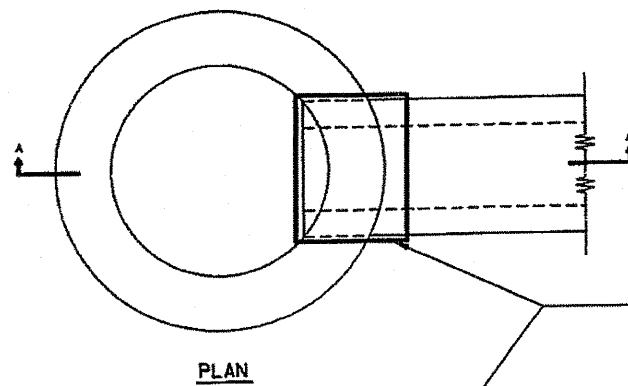
See Standard IDOT 602601 for optional precast reinforced concrete flat slab top.

\*Dimension C for precast reinforced concrete section may vary form the dimension given to plus 150mm (6").

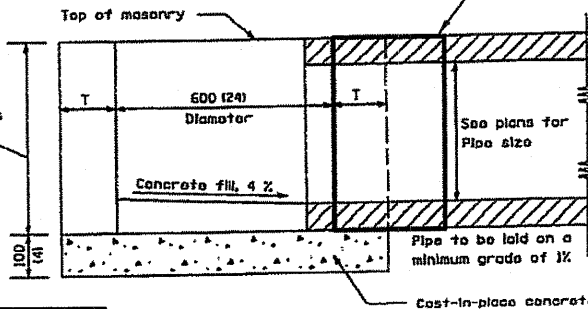
See Standard IDOT 602701 for details of steps.

All dimensions are in millimeters (inches) unless otherwise shown.

**CATCH BASIN, TYPE A, SPECIAL**



**PLAN**

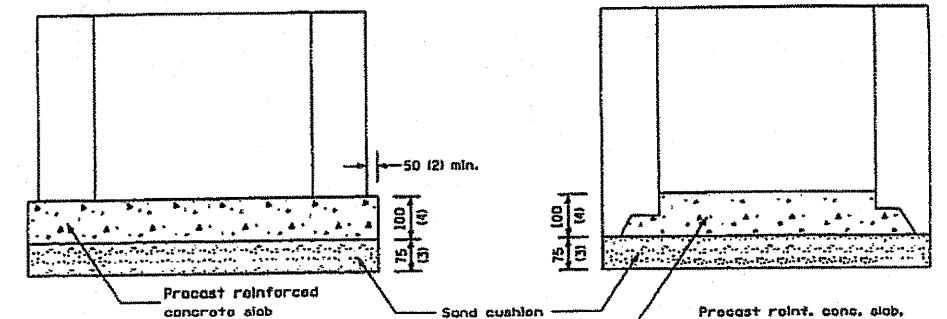


**SECTION A-A**

**TOP OF PRECAST STRUCTURE**

ALTERNATE MATERIALS FOR WALLS	T
BRICK MASONRY	200 (8)
CAST-IN-PLACE CONCRETE	150 (6)
CONCRETE MASONRY UNIT	125 (5)
PRECAST REINFORCED CONCRETE SECTION	75 (3)

A watertight boot will be used between the storm structure and the sewer. Refer to MWRDGC note 11 for specifications.



**ALTERNATE METHODS**

Precast reinf. conc. slab, when the precast reinforced concrete section alternate is used.

All dimensions are in millimeters (inches) unless otherwise shown.

**INLET, TYPE A, SPECIAL**

FILE NAME =	USER NAME =	DESIGNED — AMS	REVISED — AMS 3/09/10
		DRAWN — BAH	REVISED —
		CHECKED — TPG	REVISED —
		DATE — 1/28/10	REVISED —

**STATE OF ILLINOIS  
DEPARTMENT OF TRANSPORTATION**

**SPECIAL PROJECT DETAILS**

SCALE: NONE SHEET NO. OF SHEETS STA. TO STA.

<b>Frank Novotny &amp; Associates, Inc.</b>				
825 Midway Drive • Willowbrook, IL • 60607 • Telephone: (630) 887-8640 • Fax: (630) 887-0122				
ILLINOIS PROFESSIONAL DESIGN FIRM NO. 184-000828				
F.A. R.T.E.	SECTION	COUNTY	TOTAL SHEETS	SHEET NO.
2790	10-00212-00-RS	COOK	16	4
CONTRACT NO. 63464				
FED. ROAD DIST. NO. ILLINOIS FED. AID PROJECT ARA-9003(645)				