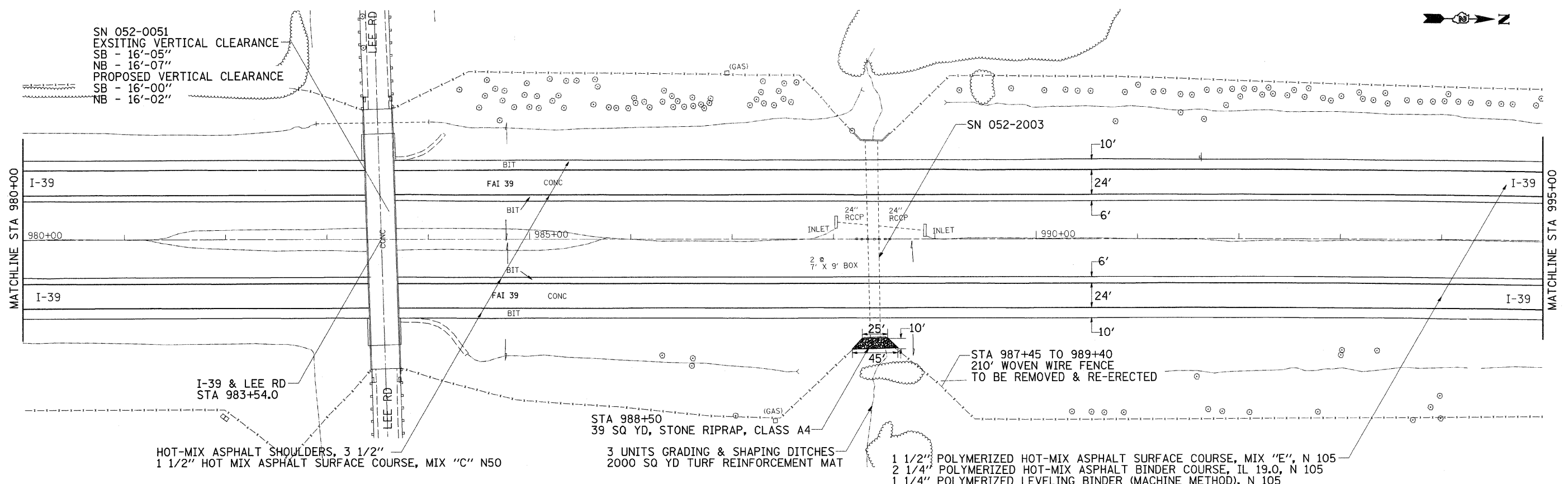


SN 052-0051
 EXISTING VERTICAL CLEARANCE
 SB - 16'-05"
 NB - 16'-07"
 PROPOSED VERTICAL CLEARANCE
 SB - 16'-00"
 NB - 16'-02"

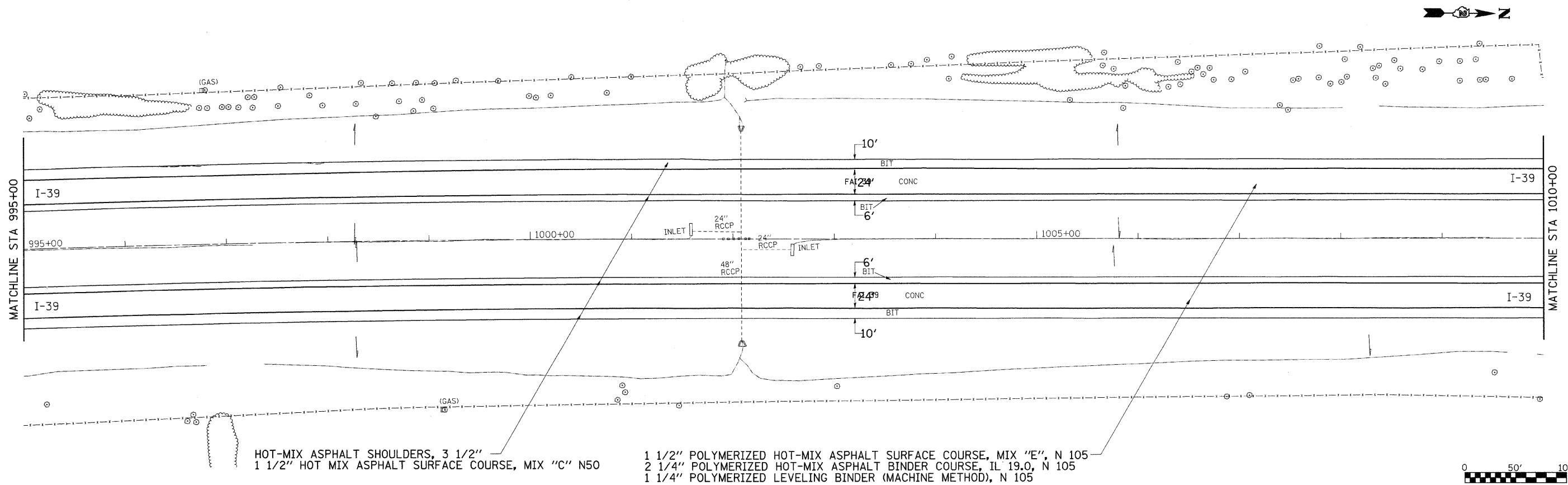


HOT-MIX ASPHALT SHOULDERS, 3 1/2"
 1 1/2" HOT MIX ASPHALT SURFACE COURSE, MIX "C" N50

STA 988+50
 39 SQ YD, STONE RIPRAP, CLASS A4
 3 UNITS GRADING & SHAPING DITCHES
 2000 SQ YD TURF REINFORCEMENT MAT

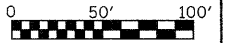
1 1/2" POLYMERIZED HOT-MIX ASPHALT SURFACE COURSE, MIX "E", N 105
 2 1/4" POLYMERIZED HOT-MIX ASPHALT BINDER COURSE, IL 19.0, N 105
 1 1/4" POLYMERIZED LEVELING BINDER (MACHINE METHOD), N 105

STA 987+45 TO 989+40
 210' WOVEN WIRE FENCE
 TO BE REMOVED & RE-ERECTED



HOT-MIX ASPHALT SHOULDERS, 3 1/2"
 1 1/2" HOT MIX ASPHALT SURFACE COURSE, MIX "C" N50

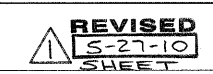
1 1/2" POLYMERIZED HOT-MIX ASPHALT SURFACE COURSE, MIX "E", N 105
 2 1/4" POLYMERIZED HOT-MIX ASPHALT BINDER COURSE, IL 19.0, N 105
 1 1/4" POLYMERIZED LEVELING BINDER (MACHINE METHOD), N 105



FILE NAME =	USER NAME = stringer_jm	DESIGNED -	REVISED -
est\pwr\work\FW100T\STRINGER.JM\d8149531\02050809-sh1-plan.dgn		DRAWN -	REVISED -
PLOT SCALE = 50.0000' / IN.		CHECKED -	REVISED -
PLOT DATE = Tue May 25 07:25:55 2010		DATE -	REVISED -

STATE OF ILLINOIS
 DEPARTMENT OF TRANSPORTATION

I-39
 PLAN SHEET



SCALE: SHEET NO. OF SHEETS STA. TO STA.

F.A.I. RTE.	SECTION	COUNTY	TOTAL SHEETS	SHEET NO.
39	(103-1, 103-2)RS	LEE	313	115
CONTRACT NO. 64E97				
ILLINOIS FED. AID PROJECT				