

STATE OF ILLINOIS  
DEPARTMENT OF TRANSPORTATION  
DIVISION OF HIGHWAYS

**PROPOSED  
HIGHWAY PLANS**

FAI ROUTE 39 (I-39)  
SECTION (103-1, 103-2)RS

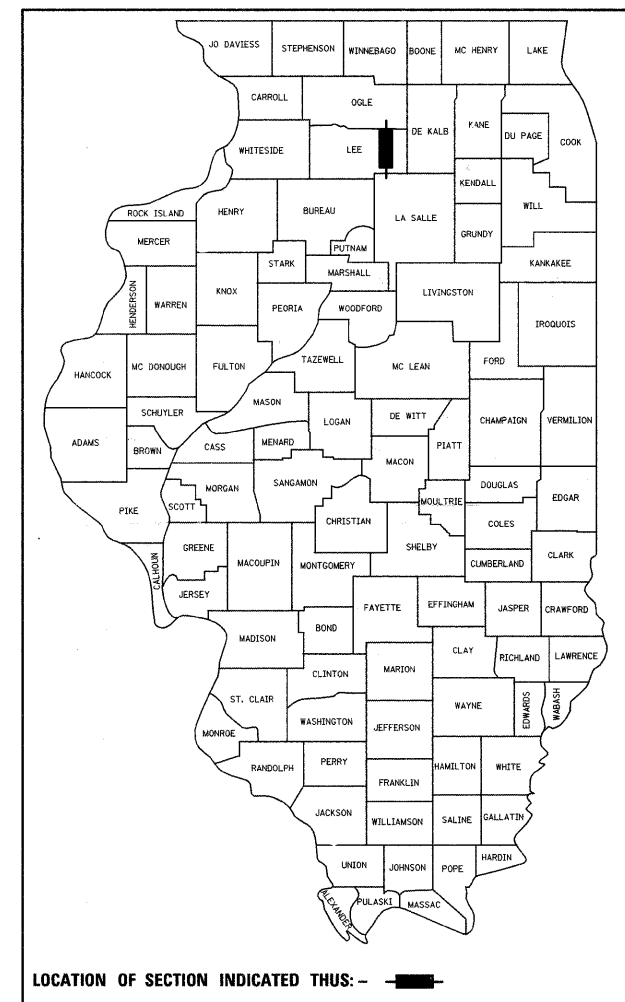
LEE COUNTY  
C-92-103-10

FOR INDEX OF SHEETS, SEE SHEET NO. 2  
FOR STATE STANDARDS, SEE SHEET NO. 2

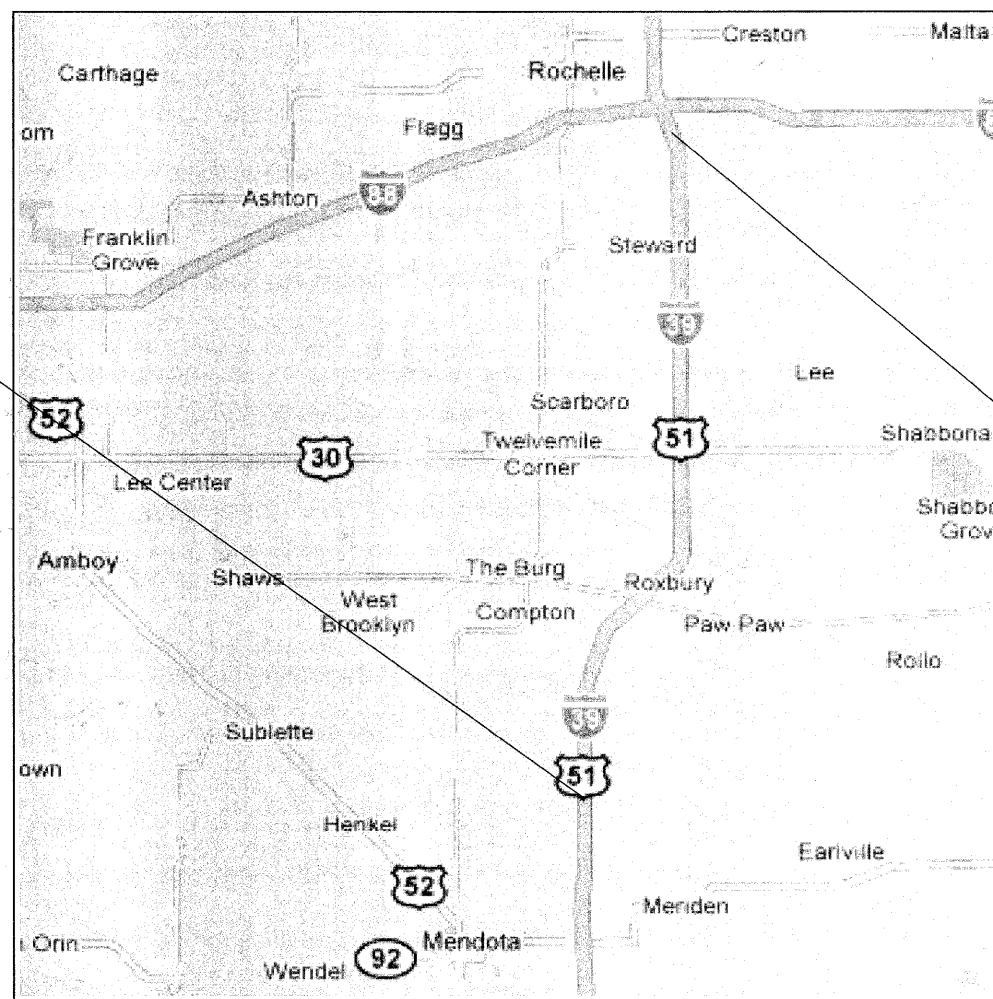
BROOKLYN TOWNSHIP - SECTIONS 13, 24, 25 & 36  
WYOMING TOWNSHIP - SECTIONS 4, 5, 7, 8 & 18  
WILLOW CREEK TOWNSHIP - SECTIONS 4, 9, 16, 21, 28 & 33  
ALTO TOWNSHIP - SECTIONS 4, 9, 16, 21, 28 & 33

F.A.I. RTE.	SECTION	COUNTY	TOTAL SHEETS	SHEET NO.
39	(103-1, 103-2)RS	LEE	313	1
		ILLINOIS	CONTRACT NO. 64E97	

D-92-058-09



PROJECT BEGINS  
STA 320 + 50



T.39N

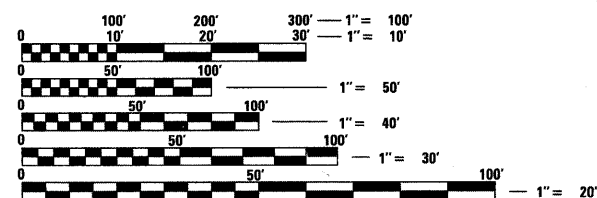
PROJECT ENDS  
STA 1353 + 86

T.38N

T.37N

R.1E

R.2E



FULL SIZE PLANS HAVE BEEN PREPARED USING STANDARD ENGINEERING SCALES. REDUCED SIZED PLANS WILL NOT CONFORM TO STANDARD SCALES. IN MAKING MEASUREMENTS ON REDUCED PLANS, THE ABOVE SCALES MAY BE USED.

J.U.L.I.E.  
JOINT UTILITY LOCATION INFORMATION FOR EXCAVATION  
1-800-892-0123  
OR 811

PROJECT ENGINEER: MASOOD AHMAD  
SQUAD LEADER: TRACI HELFRICH (815) 284-5932  
EMAIL: Traci.Helfrich@illinois.gov

CONTRACT NO. 64E97

GROSS LENGTH = 103,336.0 FT. = 19.57 MILE  
NET LENGTH = 103,336.0 FT. = 19.57 MILE

STATE OF ILLINOIS  
DEPARTMENT OF TRANSPORTATION  
DIVISION OF HIGHWAYS

SUBMITTED MARCH 29 2010  
George F. Ryan  
DEPUTY DIRECTOR OF HIGHWAYS, REGION ENGINEER

May 7 2010  
Scott E. Stitt P.E.  
ENGINEER OF DESIGN AND ENVIRONMENT

May 7 2010  
Christine M. Reed  
DIRECTOR OF HIGHWAYS, CHIEF ENGINEER

**PRINTED BY THE AUTHORITY  
OF THE STATE OF ILLINOIS**