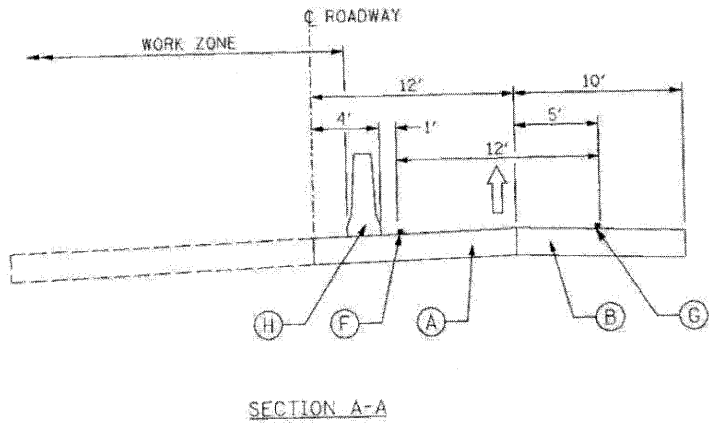
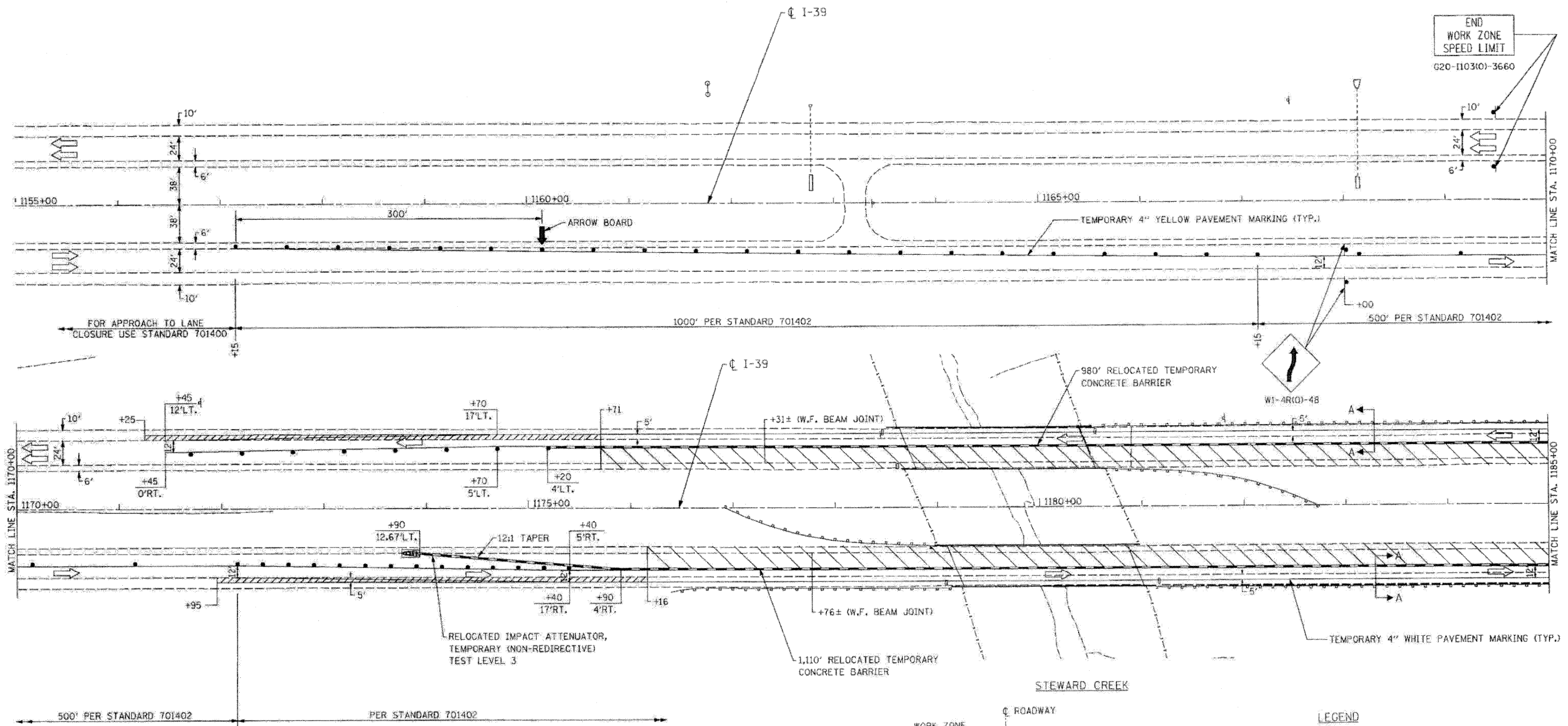


DATE	
BY	
REVISIONS	
1	
2	
3	
4	
5	
6	
7	
8	
9	
10	
11	
12	
13	
14	
15	
16	
17	
18	
19	
20	
21	
22	
23	
24	
25	
26	
27	
28	
29	
30	
31	
32	
33	
34	
35	
36	
37	
38	
39	
40	
41	
42	
43	
44	
45	
46	
47	
48	
49	
50	

DATE	
BY	
REVISIONS	
1	
2	
3	
4	
5	
6	
7	
8	
9	
10	
11	
12	
13	
14	
15	
16	
17	
18	
19	
20	
21	
22	
23	
24	
25	
26	
27	
28	
29	
30	
31	
32	
33	
34	
35	
36	
37	
38	
39	
40	
41	
42	
43	
44	
45	
46	
47	
48	
49	
50	



- LEGEND**
- (A) EXISTING 12.25" C.R.P.C.C. PAVEMENT
 - (B) EXISTING 12.25" CONCRETE SHOULDER
 - (C) PROPOSED HMA SURFACE REMOVAL, 2"
 - (D) HMA SURFACE COURSE, MIX 'C', N50, 2"
 - (E) EXISTING PAVEMENT MARKING TO BE REMOVED
 - (F) TEMPORARY 4" YELLOW LINE
 - (G) TEMPORARY 4" WHITE LINE
 - (H) TEMPORARY CONCRETE BARRIER

FILE NAME = D264E97-4ht-staging10.dgn
 PLOT DATE = 3/29/2010
 PLOT SCALE = 50.0000 X 1/4"

CHRISTIAN-ROGE & ASSOCIATES, INC.
 ENGINEERS-PLANNERS-SURVEYORS
 211 WEST WACKER DRIVE
 CHICAGO, ILLINOIS 60606
 PHONE: (312)372-2023 FAX: (312)372-5274

DESIGNED -	E.M.	REVISED -	
DRAWN -	J.V.	REVISED -	
CHECKED -	M.P.	REVISED -	
DATE -	MARCH 2010	REVISED -	

STATE OF ILLINOIS
DEPARTMENT OF TRANSPORTATION

TRAFFIC CONTROL AND PROTECTION
I-39 - STA. 1155+00 TO STA. 1185+00
STAGE II

SCALE: SHEET NO. OF SHEETS STA. TO STA.

F.A.J. RTE.	SECTION	COUNTY	TOTAL SHEETS	SHEET NO.
39	103-1, 103-2RS	LEE	313	89
FED. ROAD DIST. NO. 1 ILLINOIS FED. AID PROJECT			CONTRACT NO. 64E97	